

MATERIALS AND FINISHES

BODY ZINC
PLATED TIN

CENTER CONTACT PHOSPHOR BRONZE
PLATED GOLD

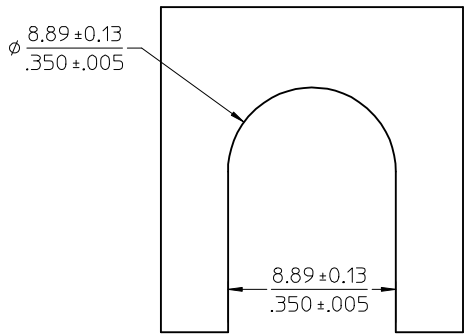
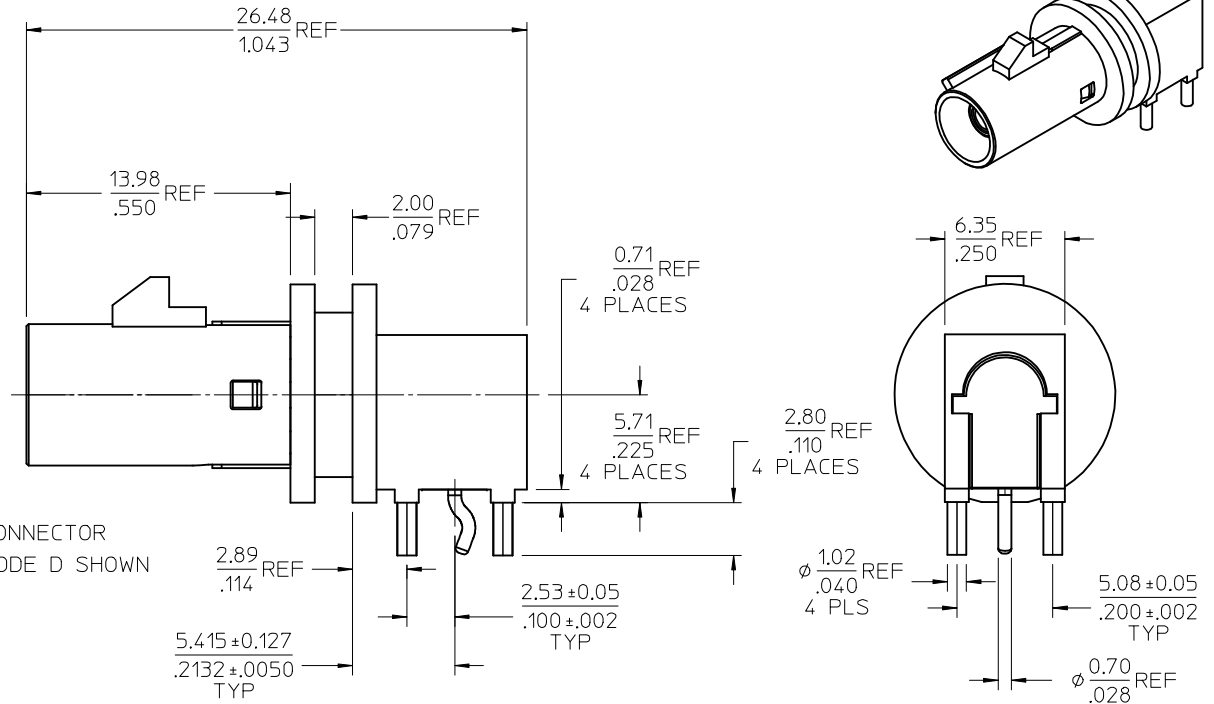
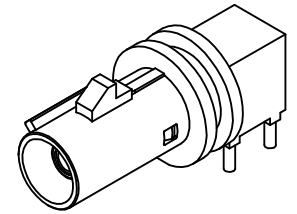
INSULATOR LPC

OUTER CASING: HIGH TEMPERATURE PLASTIC
KEYING: SEE SHEET 2
COLOR: SEE SHEET 2

RETENTION SPECIFICATION:

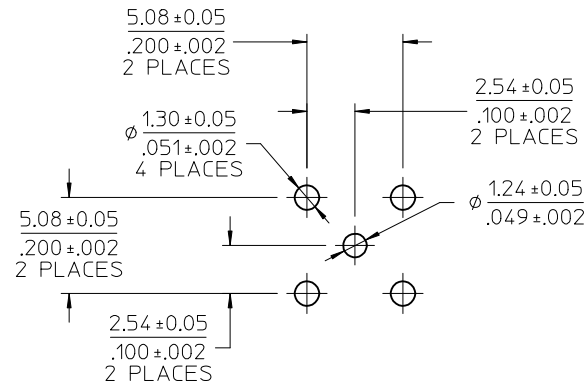
THE FAKRA CONNECTOR WILL WITHSTAND
A LONGITUDINAL FORCE OF 110 N (24.75 LBS)

FAKRA CONNECTOR
KEYING CODE D SHOWN



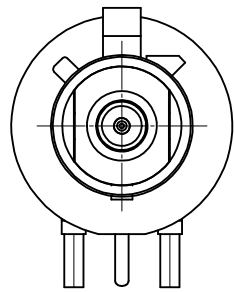
RECOMMENDED PANEL LAYOUT

1.89mm (.074 inch) MAX PANEL

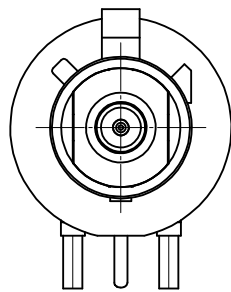


RECOMMENDED PCB LAYOUT

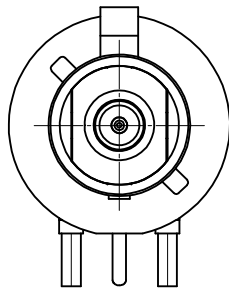
RTM PDR13041319 EC NO: URF2014-0558 DRW:ELIN 2014/04/01 CHKD: APPR:MHUANG 2014/04/09	QUALITY SYMBOLS ▽=0 ▽=0 ▽=0	GENERAL TOLERANCES (UNLESS SPECIFIED)		DIMENSION STYLE		SCALE	DESIGN UNITS	THIRD ANGLE PROJECTION	
		mm INCH		MM/IN		5:1	METRIC		
A	DESCRIPTION	4 PLACES	±	---	EL IN	DATE	TITLE SMB JACK R/A FAKRA 50 OHMS PCB SMB-J/RA/PCB molex		
		3 PLACES	±	---	CHECKED BY	DATE			
		2 PLACES	±	---	KERRIE	2013/05/03	DOCUMENT NO. SD-73403-640		
		1 PLACE	±	---	APPROVED BY	DATE			
		0 PLACE	±	---	MHUANG	2014/04/09	SHEET NO. 1 OF 3		
		ANGULAR ± 2 °		MATERIAL NO.		SEE SHEET 2			
DRAFT WHERE APPLICABLE MUST REMAIN WITHIN DIMENSIONS		SIZE		THIS DRAWING CONTAINS INFORMATION THAT IS PROPRIETARY TO MOLEX INCORPORATED AND SHOULD NOT BE USED WITHOUT WRITTEN PERMISSION					



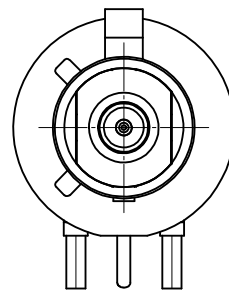
CODE - A



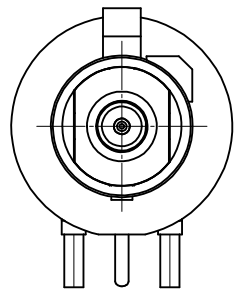
CODE - B



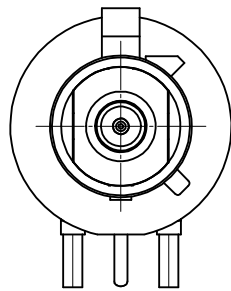
CODE - C



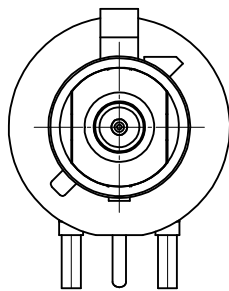
CODE - D



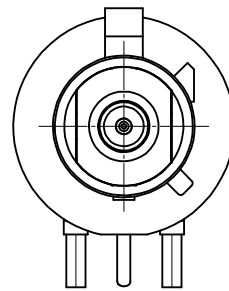
CODE - E



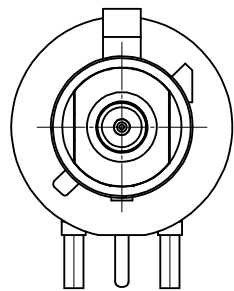
CODE - F



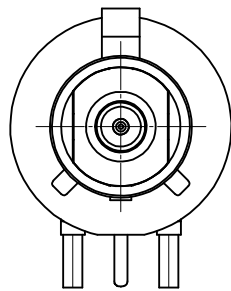
CODE - G



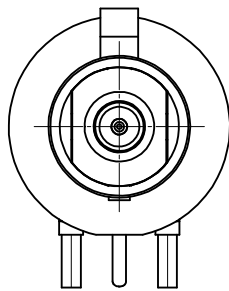
CODE - H



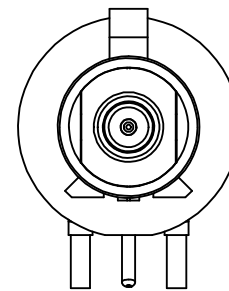
CODE - I



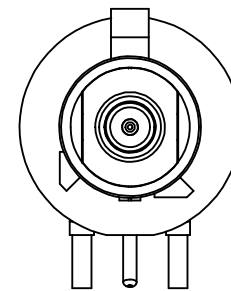
CODE - K



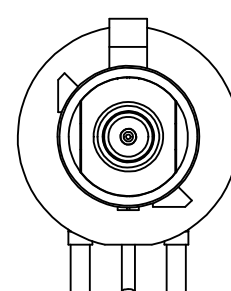
CODE - Z



CODE - L



CODE - M



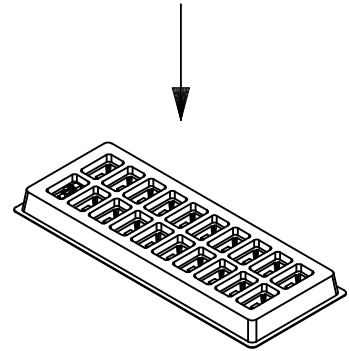
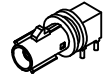
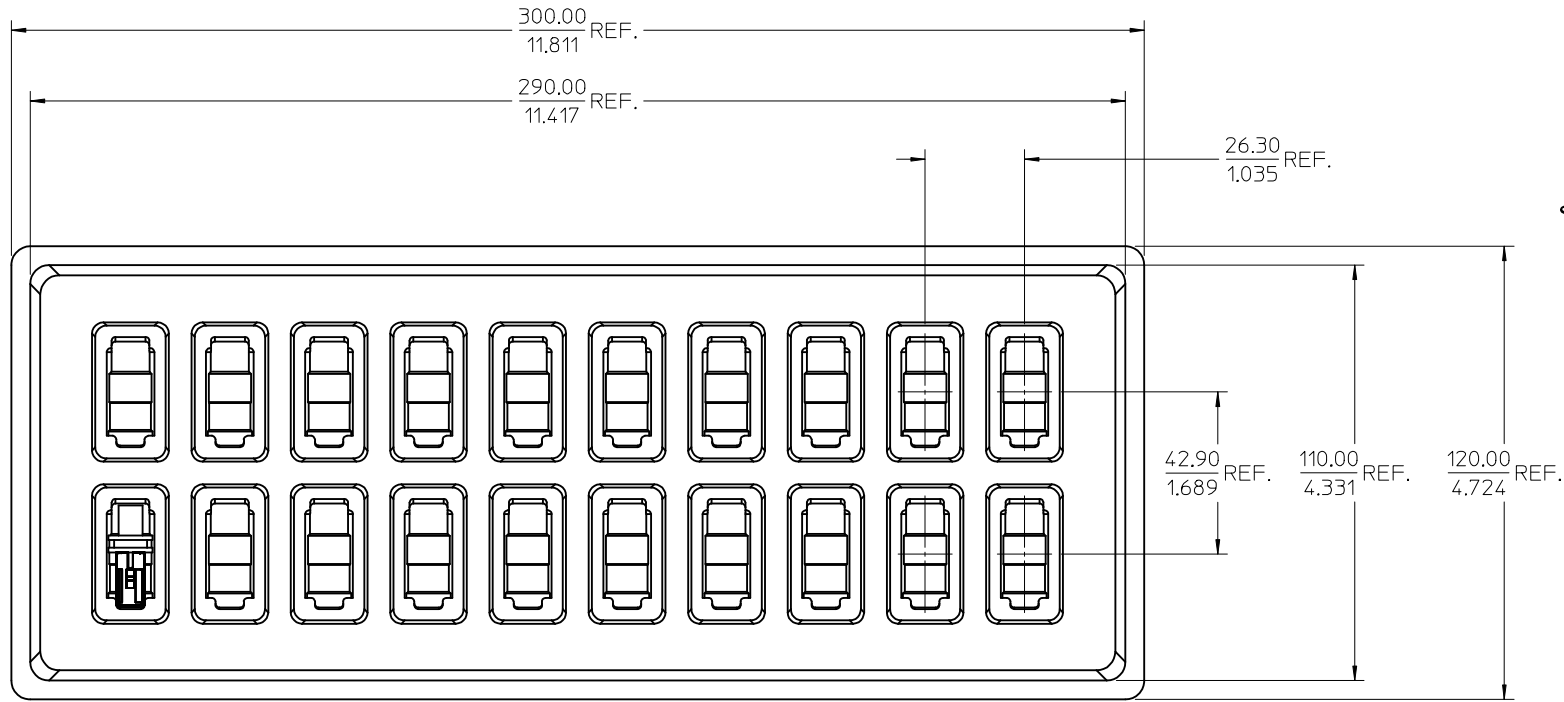
CODE - N

N	PASTEL GREEN	73403-6413
M	PASTEL ORANGE	73403-6412
L	CARMINE RED	73403-6411
Z	WATER BLUE	73403-6410
K	CURRY YELLOW	73403-6409
I	BEIGE	73403-6408
H	VIOLET	73403-6407
G	GRAY	73403-6406
F	BROWN	73403-6405
E	GREEN	73403-6404
D	BORDEAUXVIOLET	73403-6403
C	BLUE	73403-6402
B	CREAM WHITE	73403-6401
A	BLACK	73403-6400
KEYING CODE	COLOR	PART NO.

SEE SHEET 1 EC NO: URF2014-0558 DRW: NELIN 2014/04/01 CHKD: APPR: MHUANG 2014/04/09 REV: A	QUALITY SYMBOLS ▽=0 ▽=0 ▽=0	GENERAL TOLERANCES (UNLESS SPECIFIED) <table border="1"> <tr> <th></th> <th>mm</th> <th>INCH</th> </tr> <tr> <td>4 PLACES</td> <td>± ---</td> <td>± ---</td> </tr> <tr> <td>3 PLACES</td> <td>± ---</td> <td>± ---</td> </tr> <tr> <td>2 PLACES</td> <td>± ---</td> <td>± ---</td> </tr> <tr> <td>1 PLACE</td> <td>± ---</td> <td>± ---</td> </tr> <tr> <td>0 PLACE</td> <td>± ---</td> <td>± ---</td> </tr> </table>		mm	INCH	4 PLACES	± ---	± ---	3 PLACES	± ---	± ---	2 PLACES	± ---	± ---	1 PLACE	± ---	± ---	0 PLACE	± ---	± ---	DIMENSION STYLE MM/IN DRAWN BY DATE EL IN 2013/05/03 CHECKED BY DATE KERRIE 2013/05/03 APPROVED BY DATE MHUANG 2014/04/09	SCALE 5:1 TITLE SMB JACK R/A FAKRA 50 OHMS PCB SMB-J/RA/PCB molex	DESIGN UNITS METRIC THIRD ANGLE PROJECTION	MATERIAL NO. SEE TABLE DOCUMENT NO. SD-73403-640	SHEET NO. 2 OF 3
		mm	INCH																						
	4 PLACES	± ---	± ---																						
	3 PLACES	± ---	± ---																						
2 PLACES	± ---	± ---																							
1 PLACE	± ---	± ---																							
0 PLACE	± ---	± ---																							
ANGULAR ± 2 °		DRAFT WHERE APPLICABLE MUST REMAIN WITHIN DIMENSIONS		THIS DRAWING CONTAINS INFORMATION THAT IS PROPRIETARY TO MOLEX INCORPORATED AND SHOULD NOT BE USED WITHOUT WRITTEN PERMISSION																					

NOTES:

MATERIAL : PS
CONTAINS: 20 PCS PER TRAY



SEE SHEET 1 EC NO: URF2014-0558 DRAWN: ELIN 2014/04/01 CHKD: KERRIE APPR: MHUANG 2014/04/09	QUALITY SYMBOLS	GENERAL TOLERANCES (UNLESS SPECIFIED)		DIMENSION STYLE	SCALE	DESIGN UNITS	THIRD ANGLE PROJECTION	
	▽=0	mm	INCH	MM/IN	1:1	METRIC		
	▽=0	4 PLACES ± ---	± ---	DRAWN BY	DATE	TITLE		
	▽=0	3 PLACES ± ---	± ---	EL IN	2013/05/03	SMB JACK R/A FAKRA		
		2 PLACES ± ---	± ---	CHECKED BY	DATE	50 OHMS PCB		
		1 PLACE ± ---	± ---	KERRIE	2013/05/03	SMB-J/RA/PCB		
		0 PLACE ± ---	± ---	APPROVED BY	DATE	molex		
				MHUANG	2014/04/09	DOCUMENT NO.		
		ANGULAR ± 2 °		MATERIAL NO.		SD-73403-640		
		DRAFT WHERE APPLICABLE MUST REMAIN WITHIN DIMENSIONS		SEE SHEET 2		SHEET NO.		
				SIZE C		3 OF 3		
		THIS DRAWING CONTAINS INFORMATION THAT IS PROPRIETARY TO MOLEX INCORPORATED AND SHOULD NOT BE USED WITHOUT WRITTEN PERMISSION						