

MATERIALS AND FINISHES

BODY REAR BRASS  
PLATED TIN  $\triangle 1$

BODY FRONT BRASS  
PLATED NICKEL  $\triangle 2$

CENTER CONTACT PHOSPHOR BRONZE/BRASS  
PLATED GOLD  $\triangle 3$

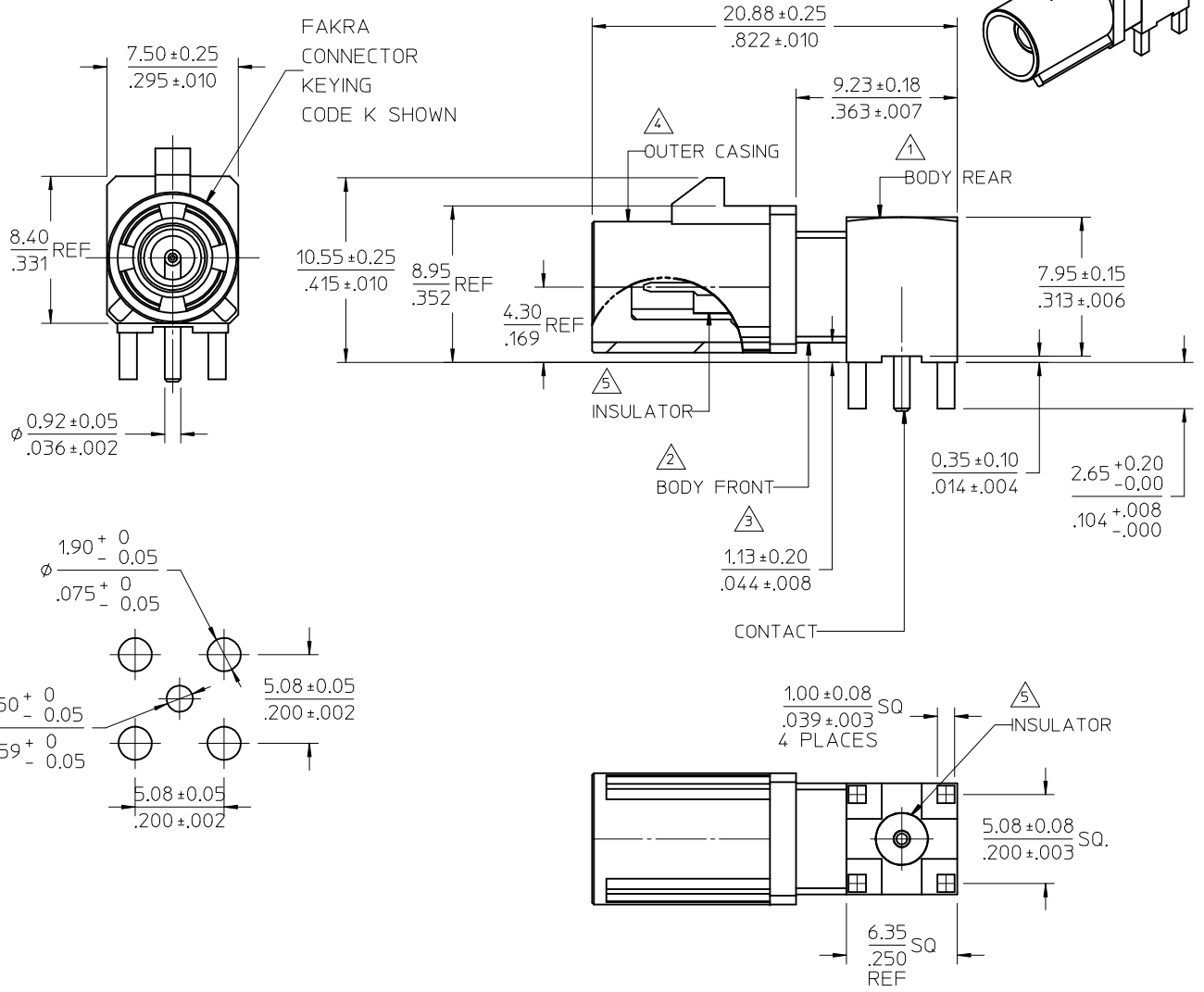
OUTER CASING HIGH TEMPERATURE PLASTIC  
KEYING SEE TABLE  $\triangle 4$   
COLOR SEE TABLE  $\triangle 4$

INSULATOR TEFLON  $\triangle 5$

PACKAGING BY TRAY

RETENTION SPECIFICATION

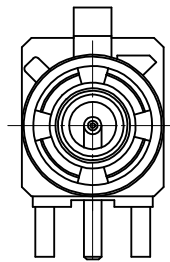
THE FAKRA CONNECTOR SHROUD WILL WITHSTAND  
A LONGITUDINAL FORCE OF 110 N (24.75 LBS)



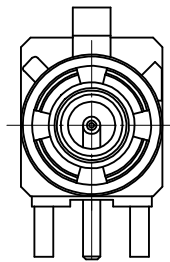
PS-89675-3310	PRODUCT SPECIFICATION
MIL-STD-348A, FIG. 311.1	INTERFACE SPECIFICATION
SPECIFICATION	DESCRIPTION

PS-89675-3310	PRODUCT SPECIFICATION
MIL-STD-348A, FIG. 311.1	INTERFACE SPECIFICATION
SPECIFICATION	DESCRIPTION

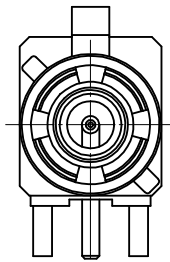
REDRAWN EC NO: URF2017-0267 DRWN: LIN CHKD: APPR: YCHENG 2017/01/23 DESCRIPTION	QUALITY SYMBOLS	GENERAL TOLERANCES (UNLESS SPECIFIED) <table border="1"> <tr> <td></td> <td>mm</td> <td>INCH</td> </tr> <tr> <td>4 PLACES</td> <td>± .005</td> <td>± .0002</td> </tr> <tr> <td>3 PLACES</td> <td>± .005</td> <td>± .0002</td> </tr> <tr> <td>2 PLACES</td> <td>± .005</td> <td>± .0002</td> </tr> <tr> <td>1 PLACE</td> <td>± .005</td> <td>± .0002</td> </tr> </table> ANGULAR ± 2° DRAFT WHERE APPLICABLE MUST REMAIN WITHIN DIMENSIONS		mm	INCH	4 PLACES	± .005	± .0002	3 PLACES	± .005	± .0002	2 PLACES	± .005	± .0002	1 PLACE	± .005	± .0002	DIMENSION STYLE MM/IN SCALE DESIGN UNITS METRIC THIRD ANGLE PROJECTION
			mm	INCH														
	4 PLACES		± .005	± .0002														
3 PLACES	± .005	± .0002																
2 PLACES	± .005	± .0002																
1 PLACE	± .005	± .0002																
DRAWN BY JOYCE DATE 2008/12/16 CHECKED BY KERRIE DATE 2008/12/16 APPROVED BY MISEN DATE 2008/12/16	TITLE SMB JACK, FAKRA R/A PCB, 50 OHMS SMB-J/PCB/RA																	
MATERIAL NO. SEE TABLE SIZE C	DOCUMENT NO. SD-73403-511 SHEET NO. 1 OF 2																	



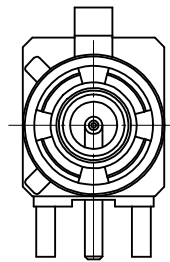
CODE-A



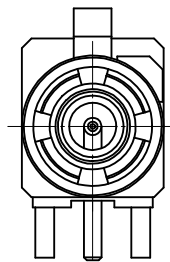
CODE-B



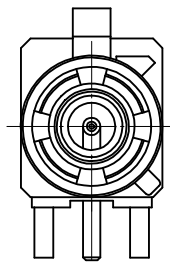
CODE-C



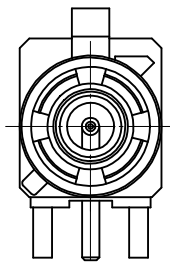
CODE-D



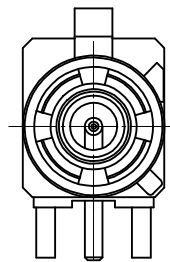
CODE-E



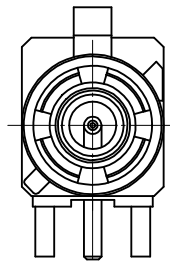
CODE-F



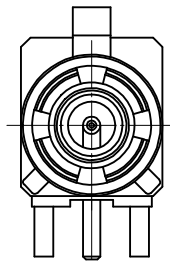
CODE-G



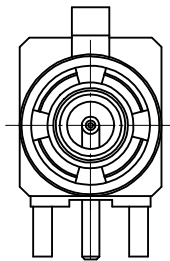
CODE-H



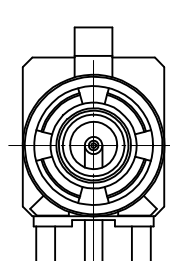
CODE-I



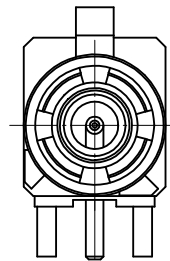
CODE-K



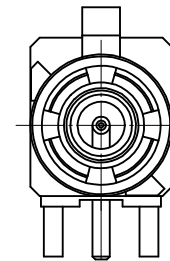
CODE-Z



CODE-L



CODE-M



CODE-N

N	PASTEL GREEN	73403-5123
M	PASTEL ORANGE	73403-5122
L	CARMINE RED	73403-5121
Z	WATER BLUE	73403-5120
K	CURRY YELLOW	73403-5119
I	BEIGE	73403-5118
H	VIOLET	73403-5117
G	GRAY	73403-5116
F	BROWN	73403-5115
E	GREEN	73403-5114
D	BORDEAUXVIOLET	73403-5113
C	BLUE	73403-5112
B	NATURAL	73403-5111
A	BLACK	73403-5110
KEYING CODE	COLOR	PART NO.

SEE SHEET 1 EC NO: URF2017-0267 DRWN:LIN 2017/01/05 CHKD: APPR:YCHENG 2017/01/23 REV: A6	QUALITY SYMBOLS ▽=0 ▽=0	GENERAL TOLERANCES (UNLESS SPECIFIED) <table border="1"> <tr> <td></td> <td>mm</td> <td>INCH</td> </tr> <tr> <td>4 PLACES</td> <td>± .---</td> <td>± .---</td> </tr> <tr> <td>3 PLACES</td> <td>± .---</td> <td>± .---</td> </tr> <tr> <td>2 PLACES</td> <td>± .---</td> <td>± .---</td> </tr> <tr> <td>1 PLACE</td> <td>± .---</td> <td>± .---</td> </tr> </table> ANGULAR ± 2 °		mm	INCH	4 PLACES	± .---	± .---	3 PLACES	± .---	± .---	2 PLACES	± .---	± .---	1 PLACE	± .---	± .---	DIMENSION STYLE MM/IN	SCALE DESIGN UNITS METRIC	THIRD ANGLE PROJECTION
		mm	INCH																	
	4 PLACES	± .---	± .---																	
	3 PLACES	± .---	± .---																	
2 PLACES	± .---	± .---																		
1 PLACE	± .---	± .---																		
DRAWN BY JOYCE	DATE 2008/12/16	TITLE SMB JACK, FAKRA R/A PCB, 50 OHMS SMB-J/PCB/RA																		
CHECKED BY KERRIE	DATE 2008/12/16	APPROVED BY MISEN	DATE 2008/12/16	MOLEX INCORPORATED																
MATERIAL NO. SEE TABLE		DOCUMENT NO. SD-73403-511		SHEET NO. 2 OF 2																
DRAFT WHERE APPLICABLE MUST REMAIN WITHIN DIMENSIONS																				
THIS DRAWING CONTAINS INFORMATION THAT IS PROPRIETARY TO MOLEX INCORPORATED AND SHOULD NOT BE USED WITHOUT WRITTEN PERMISSION																				