

MATERIALS AND FINISHES

BODY ZINC ALLOY  
PLATED BRIGHT TIN 100 MICROINCHES MIN.

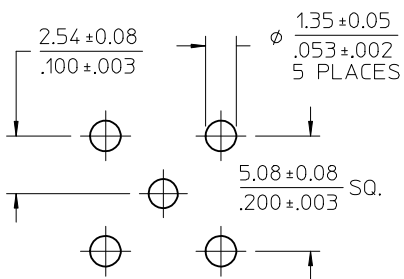
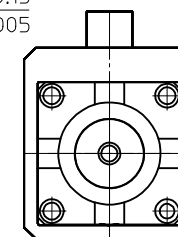
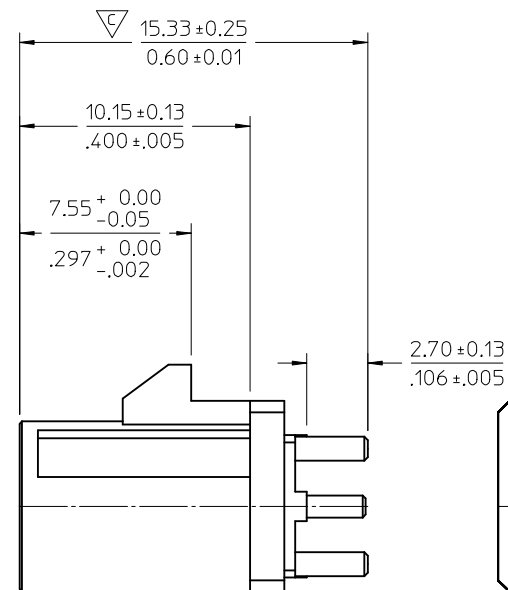
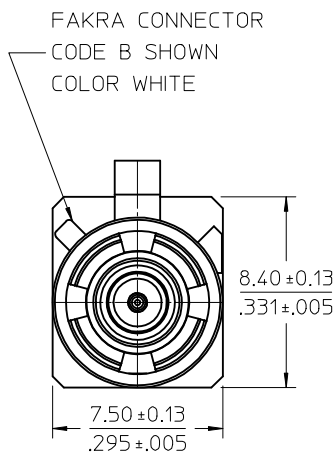
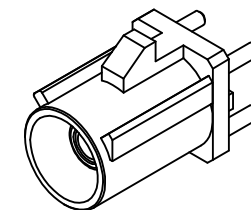
CENTER CONTACT BRASS  
PLATED GOLD 5 MICROINCHES MIN. OVER  
NICKEL 50 MICROINCHES MIN.

OUTER CASING NYLON46 30GF (STANYL TS200F6)  
KEYING CODE B  
COLOR WHITE

INSULATOR: TEFLON

RETENTION SPECIFICATION:

THE FAKRA CONNECTOR SHROUD WILL WITHSTAND  
A LONGITUDINAL FORCE OF 120 N(26.98 LBS)



HOLE LAYOUT

PART # 73403-5561

PS-89675-3310	PRODUCT SPECIFICATION
MIL-STD-348A, FIG. 311.1	INTERFACE
SPECIFICATION	DESCRIPTION

ADDED -5568 PER RF-15-E378 EC NO: DRWNLIN CHKD: APPR:	2015/11/03
REV	DESCRIPTION
A1	

QUALITY SYMBOLS
▽=0
▽=1

GENERAL TOLERANCES (UNLESS SPECIFIED)
4 PLACES ± .005
3 PLACES ± .004
2 PLACES ± .003
1 PLACE ± .002
ANGULAR ± 2 °
DRAFT WHERE APPLICABLE MUST REMAIN WITHIN DIMENSIONS

DIMENSION STYLE	MM/IN
DRAWN BY	DATE
CHECKED BY	DATE
APPROVED BY	DATE
MATERIAL NO.	SEE TABLE
SIZE	C

SCALE	DESIGN UNITS	THIRD ANGLE PROJECTION
	METRIC	
TITLE	SMB JACK, FAKRA, VERTICAL PCB, 50 OHM SMB-J/PCB	
MOLEX MOLEX INCORPORATED		
DOCUMENT NO.	SD-73403-556	SHEET NO. 1 OF 8

MATERIALS AND FINISHES

BODY ZINC ALLOY  
 PLATED BRIGHT TIN 100 MICROINCHES MIN.

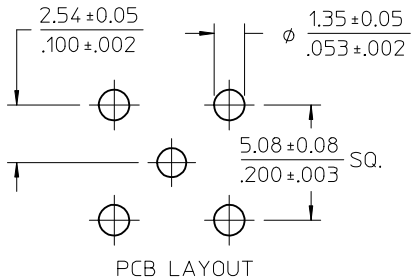
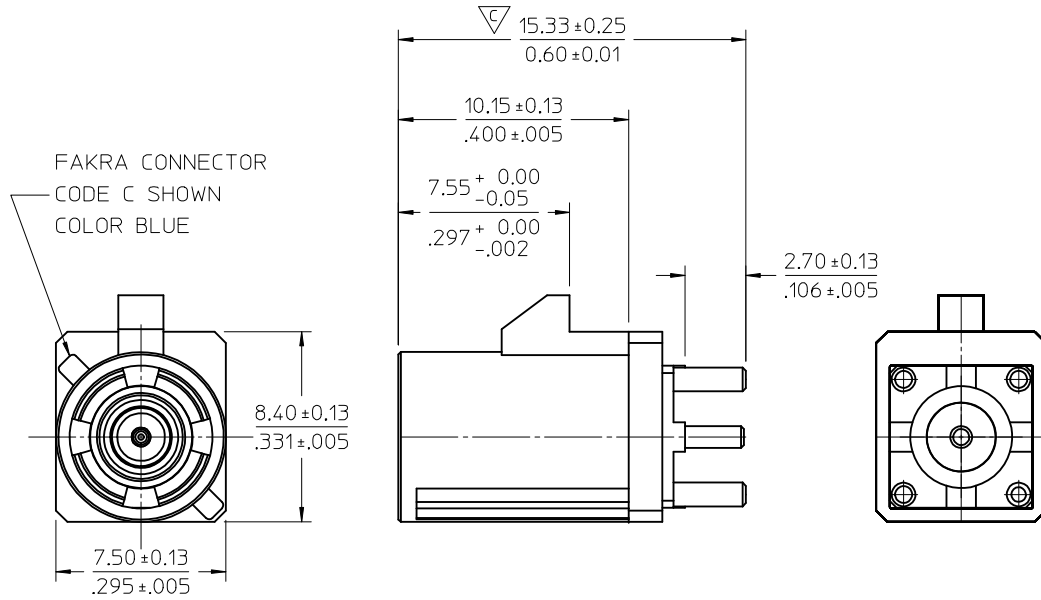
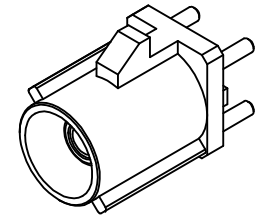
CENTER CONTACT BRASS  
 PLATED GOLD 5 MICROINCHES MIN. OVER  
 NICKEL 50 MICROINCHES MIN.

OUTER CASING NYLON 46 30GF (STANYL TS200F6)  
 KEYING CODE C  
 COLOR BLUE

INSULATOR: TEFLON

RETENTION SPECIFICATION:

THE FAKRA CONNECTOR SHROUD WILL WITHSTAND  
 A LONGITUDINAL FORCE OF 120 N(26.98 LBS)



FAKRA CONNECTOR  
 CODE C SHOWN  
 COLOR BLUE

PCB LAYOUT

PART # 73403-5562

PS-89675-3310	PRODUCT SPECIFICATION
MIL-STD-348A, FIG. 311.1	INTERFACE
SPECIFICATION	DESCRIPTION

SEE SHEET 1 EC NO: URF2016-0354 DRAWN: LIN CHKD: APPR: YCHENG A1	REV DESCRIPTION 2015/11/04	QUALITY SYMBOLS ▽=0 ▽=1	GENERAL TOLERANCES (UNLESS SPECIFIED)	DIMENSION STYLE MM/IN	SCALE	DESIGN UNITS METRIC	THIRD ANGLE PROJECTION																								
		<table border="1"> <tr> <th></th> <th>mm</th> <th>INCH</th> </tr> <tr> <td>4 PLACES ±</td> <td>---</td> <td>---</td> </tr> <tr> <td>3 PLACES ±</td> <td>---</td> <td>---</td> </tr> <tr> <td>2 PLACES ±</td> <td>---</td> <td>---</td> </tr> <tr> <td>1 PLACE ±</td> <td>---</td> <td>---</td> </tr> </table>		mm	INCH	4 PLACES ±	---	---	3 PLACES ±	---	---	2 PLACES ±	---	---	1 PLACE ±	---	---	<table border="1"> <tr> <td>DRAWN BY</td> <td>DATE</td> </tr> <tr> <td>EVITA</td> <td>2009/12/16</td> </tr> <tr> <td>CHECKED BY</td> <td>DATE</td> </tr> <tr> <td>ALEX</td> <td>2009/12/16</td> </tr> <tr> <td>APPROVED BY</td> <td>DATE</td> </tr> <tr> <td>MISEN</td> <td>2009/12/16</td> </tr> </table>	DRAWN BY	DATE	EVITA	2009/12/16	CHECKED BY	DATE	ALEX	2009/12/16	APPROVED BY	DATE	MISEN	2009/12/16	TITLE
	mm	INCH																													
4 PLACES ±	---	---																													
3 PLACES ±	---	---																													
2 PLACES ±	---	---																													
1 PLACE ±	---	---																													
DRAWN BY	DATE																														
EVITA	2009/12/16																														
CHECKED BY	DATE																														
ALEX	2009/12/16																														
APPROVED BY	DATE																														
MISEN	2009/12/16																														
DRAFT WHERE APPLICABLE MUST REMAIN WITHIN DIMENSIONS			ANGULAR ± 2 °	SEE TABLE	DOCUMENT NO.	MOLEX INCORPORATED	SD-73403-556	2 OF 8																							
THIS DRAWING CONTAINS INFORMATION THAT IS PROPRIETARY TO MOLEX INCORPORATED AND SHOULD NOT BE USED WITHOUT WRITTEN PERMISSION																															

MATERIALS AND FINISHES

BODY ZINC ALLOY  
PLATED BRIGHT TIN 100 MICRONS MIN.

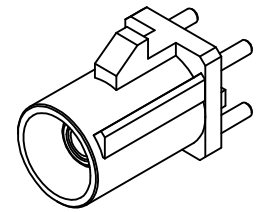
CENTER CONTACT BRASS  
PLATED GOLD 5 MICRONS MIN. OVER  
NICKEL 50 MICRONS MIN.

OUTER CASING NYLON46 30GF (STANYL TS200F6)  
KEYING CODE I  
COLOR BEIGE

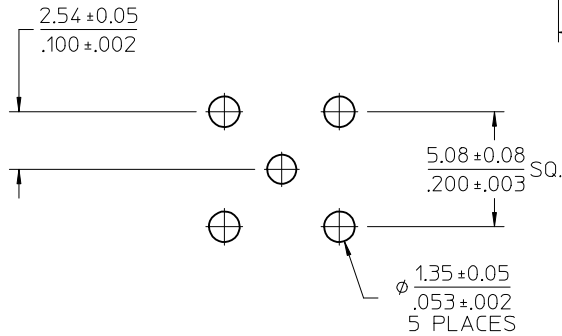
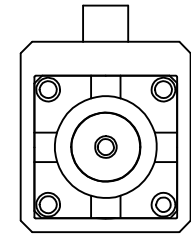
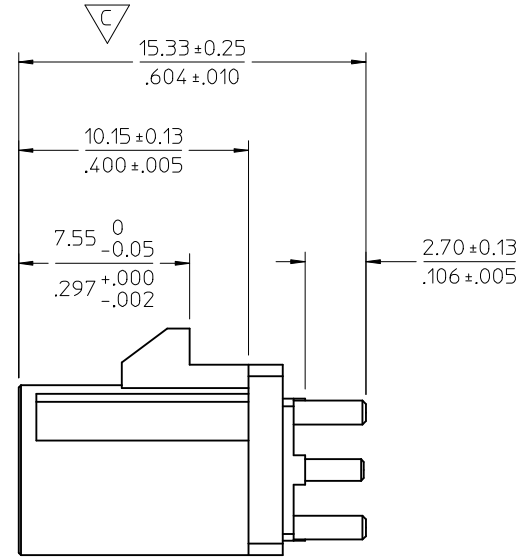
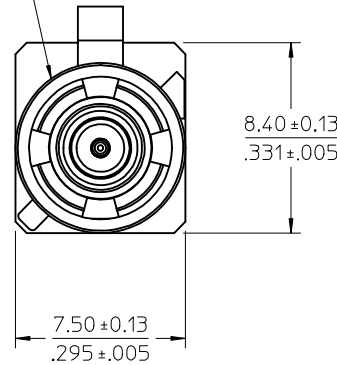
INSULATOR: TEFLON

RETENTION SPECIFICATION:

THE FAKRA CONNECTOR SHROUD WILL WITHSTAND  
A LONGITUDINAL FORCE OF 120 N(26.98 LBS)



FAKRA CONNECTOR  
CODE I SHOWN  
COLOR BEIGE



PCB LAYOUT

PART # 73403-5568

PS-89675-3310	PRODUCT SPECIFICATION
MIL-STD-348A, FIG. 311.1	INTERFACE
SPECIFICATION	DESCRIPTION

SEE SHEET 1 EC NO: URF2016-0354 DRAWN: LIN 2015/11/03 CHKD: APPR: YCHENG 2015/11/04	QUALITY SYMBOLS ▽=0 ▽=0 ▽=0	GENERAL TOLERANCES (UNLESS SPECIFIED)		DIMENSION STYLE MM/IN	SCALE 6:1	DESIGN UNITS METRIC	THIRD ANGLE PROJECTION											
		4 PLACES ± --- ± ---	3 PLACES ± --- ± ---	2 PLACES ± --- ± ---	1 PLACE ± --- ± ---	0 PLACE ± --- ± ---	ANGULAR ± 2 °	DRAFT WHERE APPLICABLE MUST REMAIN WITHIN DIMENSIONS	DRAWN BY EVITA	DATE 2009/12/16	CHECKED BY ALEX	DATE 2009/12/16	APPROVED BY MISEN	DATE 2009/12/16	TITLE SMB JACK, FAKRA, VERTICAL PCB, 50 OHM SMB-J/PCB	MATERIAL NO. SEE TABLE	DOCUMENT NO. SD-73403-556	SHEET NO. 3 OF 8
THIS DRAWING CONTAINS INFORMATION THAT IS PROPRIETARY TO MOLEX INCORPORATED AND SHOULD NOT BE USED WITHOUT WRITTEN PERMISSION																		

MATERIALS AND FINISHES

BODY ZINC ALLOY  
 PLATED BRIGHT TIN 100 MICROINCHES MIN.

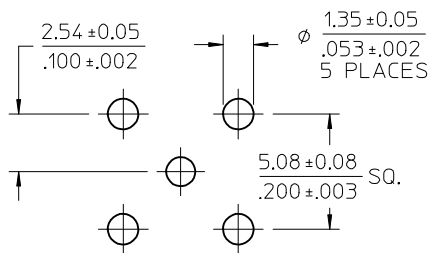
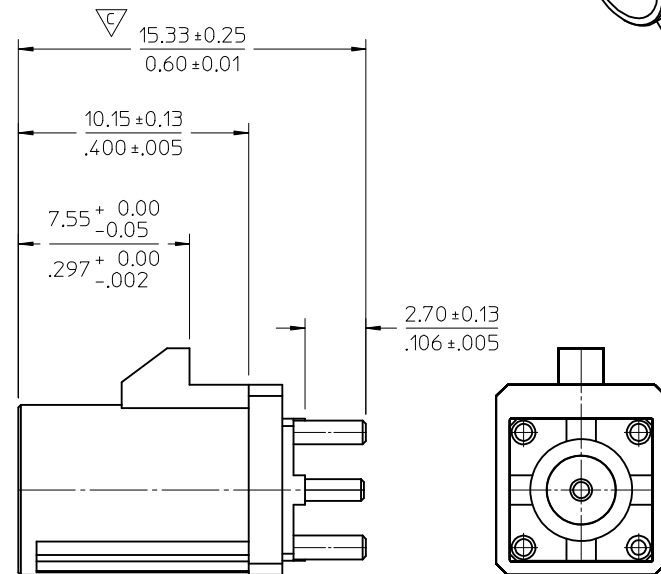
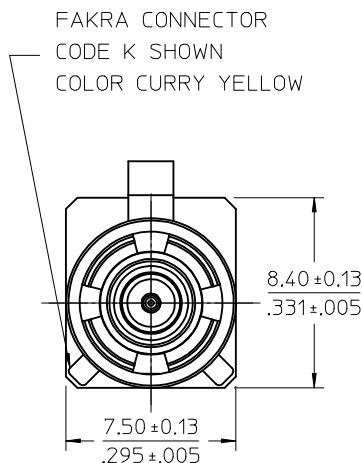
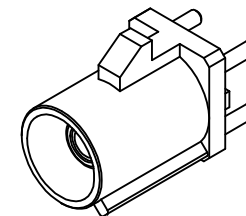
CENTER CONTACT BRASS  
 PLATED GOLD 5 MICROINCHES MIN. OVER  
 NICKEL 50 MICROINCHES MIN.

OUTER CASING NYLON46 30GF (STANYL TS200F6)  
 KEYING CODE K  
 COLOR CURRY YELLOW

INSULATOR: TEFLON

RETENTION SPECIFICATION:

THE FAKRA CONNECTOR SHROUD WILL WITHSTAND  
 A LONGITUDINAL FORCE OF 120 N(26.98 LBS)

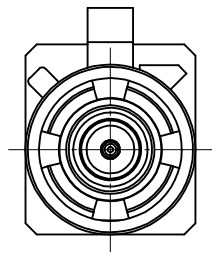


PCB LAYOUT

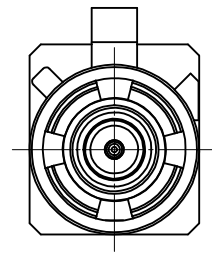
PART #73403-5569

PS-89675-3310	PRODUCT SPECIFICATION
MIL-STD-348A, FIG. 311.1	INTERFACE
SPECIFICATION	DESCRIPTION

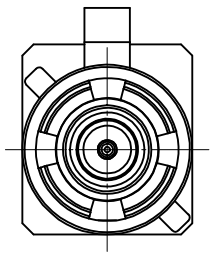
SEE SHEET 1 EC NO: URF2016-0354 DRAWN: LIN 2015/11/03 CHKD: APPR: YCHENG 2015/11/04 REV: A1	QUALITY SYMBOLS ▽=0 ▽=1	GENERAL TOLERANCES (UNLESS SPECIFIED) mm INCH 4 PLACES ± --- ± --- 3 PLACES ± --- ± --- 2 PLACES ± --- ± --- 1 PLACE ± --- ± --- ANGULAR ± 2 °	DIMENSION STYLE MM/IN DRAWN BY DATE EVITA 2009/12/16 CHECKED BY DATE ALEX 2009/12/16 APPROVED BY DATE MI SEN 2009/12/16	SCALE DESIGN UNITS METRIC THIRD ANGLE PROJECTION	TITLE SMB JACK, FAKRA, VERTICAL PCB, 50 OHM SMB-J/PCB	MATERIAL NO. SEE TABLE	DOCUMENT NO. SD-73403-556	SHEET NO. 4 OF 8
	DRAFT WHERE APPLICABLE MUST REMAIN WITHIN DIMENSIONS		THIS DRAWING CONTAINS INFORMATION THAT IS PROPRIETARY TO MOLEX INCORPORATED AND SHOULD NOT BE USED WITHOUT WRITTEN PERMISSION					



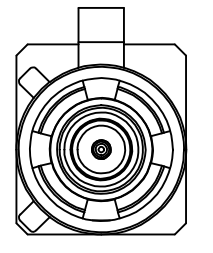
CODE-A



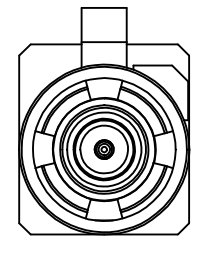
CODE-B



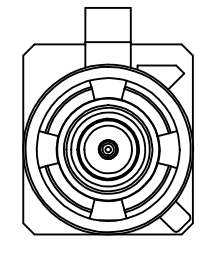
CODE-C



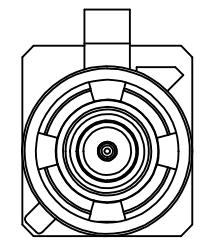
CODE-D



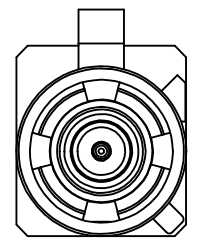
CODE-E



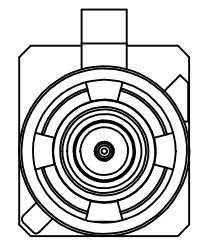
CODE-F



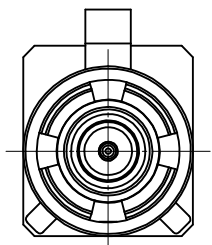
CODE-G



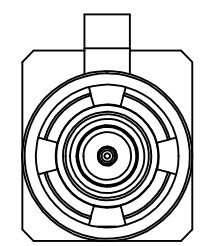
CODE-H



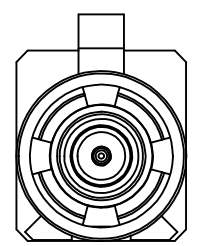
CODE-I



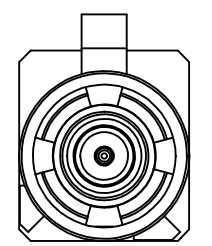
CODE-K



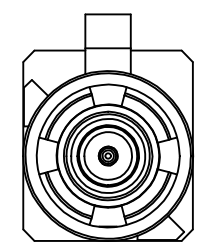
CODE-Z



CODE-L



CODE-M



CODE-N

N	PASTEL GREEN	73403-5573
M	PASTEL ORANGE	73403-5572
L	CARMINE RED	73403-5571
Z	WATER BLUE	73403-5570
K	CURRY YELLOW	73403-5569
I	BEIGE	73403-5568
H	VIOLET	73403-5567
G	GRAY	73403-5566
F	BROWN	73403-5565
E	GREEN	73403-5564
D	BORDEAUXVIOLET	73403-5563
C	BLUE	73403-5562
B	SIGNAL WHITE	73403-5561
A	BLACK	73403-5560
KEYING CODE	COLOR	PART NO.

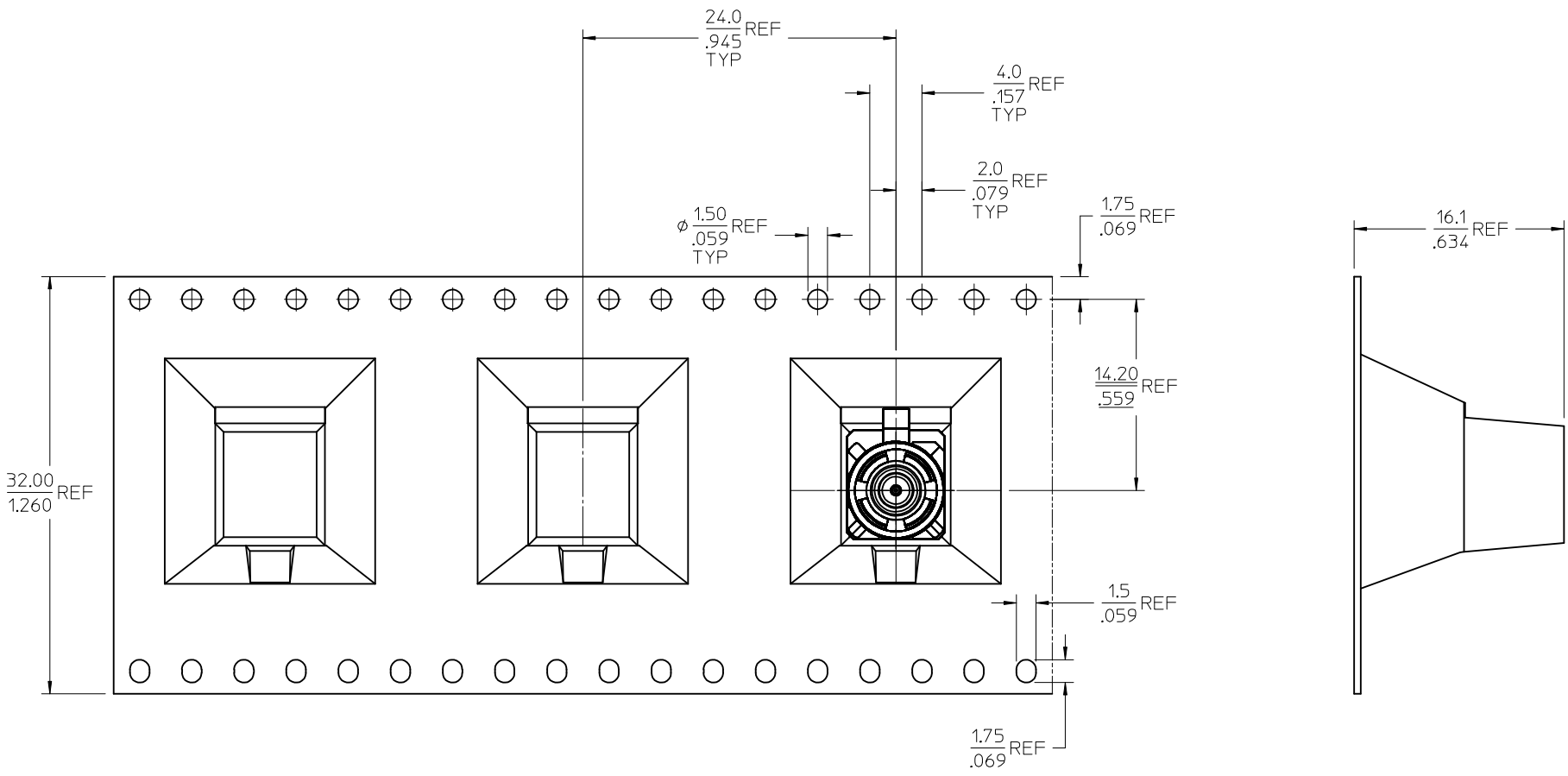
SEE SHEET 1	EC NO: URF2016-0354	2015/11/03
	DRWN:ELIN	2015/11/03
A1	CHKD:	
	APPR:YCHENG	2015/11/04

QUALITY SYMBOLS	▽=0
	▽=0

GENERAL TOLERANCES (UNLESS SPECIFIED)	
	mm
	INCH
4 PLACES	± ---
3 PLACES	± ---
2 PLACES	± ---
1 PLACE	± ---
ANGULAR ± 2 °	
DRAFT WHERE APPLICABLE MUST REMAIN WITHIN DIMENSIONS	

DIMENSION STYLE	
MM/IN	
DRAWN BY	DATE
EVITA	2009/12/16
CHECKED BY	DATE
ALEX	2009/12/16
APPROVED BY	DATE
MISEN	2009/12/16
MATERIAL NO.	
SEE TABLE	

SCALE	DESIGN UNITS	THIRD ANGLE PROJECTION
	METRIC	
TITLE		
SMB JACK,FAKRA, VERTICAL PCB, 50 OHM SMB-J/PCB		
MOLEX MOLEX INCORPORATED		SHEET NO.
DOCUMENT NO.		5 OF 8
THIS DRAWING CONTAINS INFORMATION THAT IS PROPRIETARY TO MOLEX INCORPORATED AND SHOULD NOT BE USED WITHOUT WRITTEN PERMISSION		

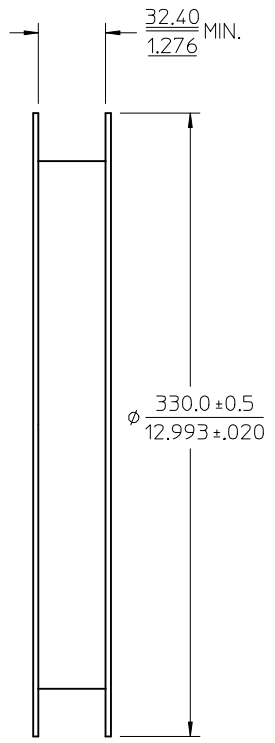


SEE SHEET 1 EC NO: URF2016-0354 DRWN:ELIN 2015/11/03 CHKD: APPR:YCHENG 2015/11/04	QUALITY SYMBOLS	DESCRIPTION
	▽=0	
	▽=0	
	A1	REV

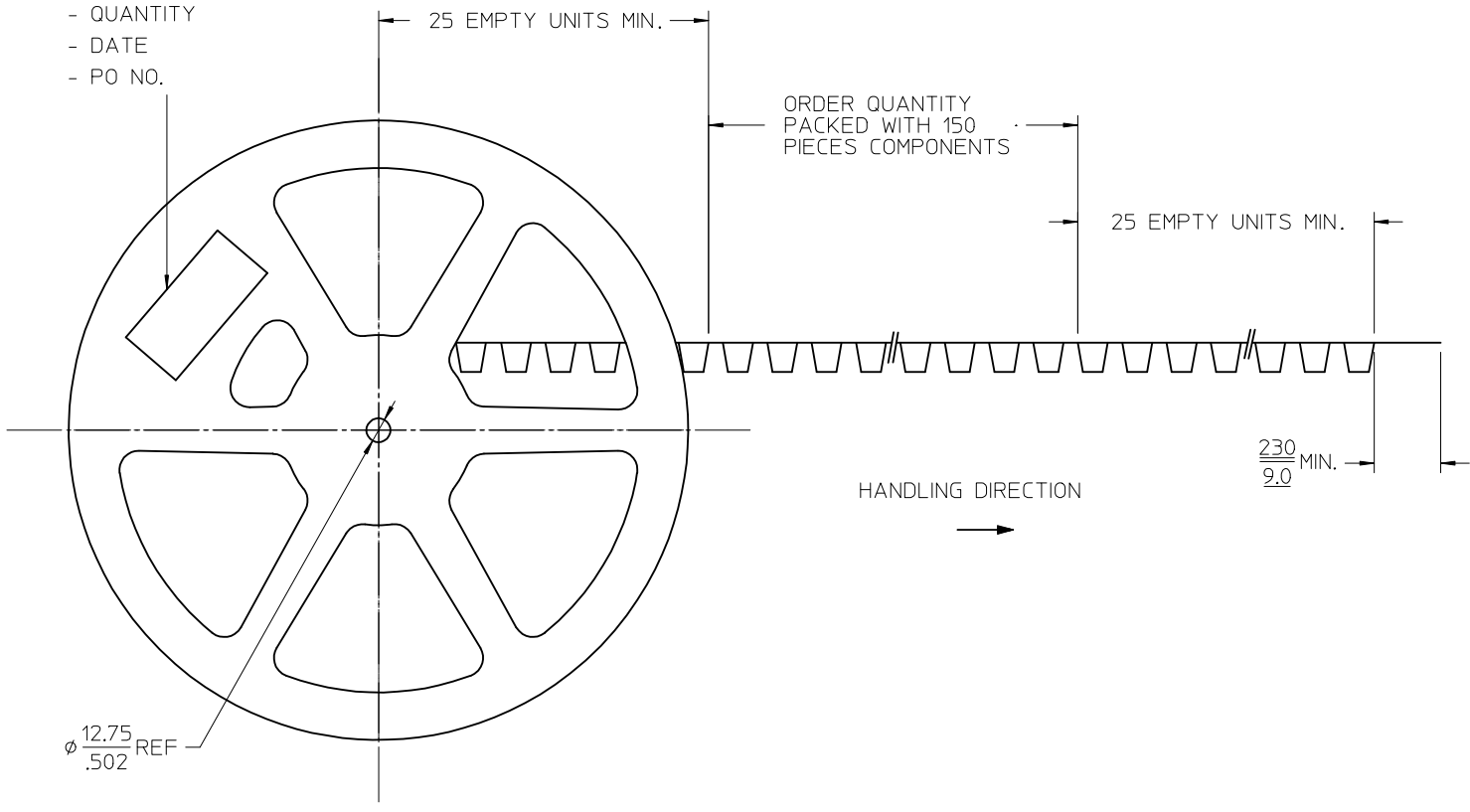
GENERAL TOLERANCES (UNLESS SPECIFIED)	
mm	INCH
4 PLACES ± .010	± .004
3 PLACES ± .015	± .006
2 PLACES ± .020	± .008
1 PLACE ± .030	± .012
ANGULAR ± 2°	
DRAFT WHERE APPLICABLE MUST REMAIN WITHIN DIMENSIONS	

DIMENSION STYLE	
MM/IN	
DRAWN BY	DATE
EVITA	2009/12/16
CHECKED BY	DATE
ALEX	2009/12/16
APPROVED BY	DATE
MISEN	2009/12/16
MATERIAL NO.	
SEE TABLE	
SIZE	
C	

SCALE	DESIGN UNITS	THIRD ANGLE PROJECTION
	METRIC	
TITLE		
SMB JACK, FAKRA, VERTICAL PCB, 50 OHM SMB-J/PCB		
MOLEX INCORPORATED		SHEET NO.
DOCUMENT NO.		6 OF 8
THIS DRAWING CONTAINS INFORMATION THAT IS PROPRIETARY TO MOLEX INCORPORATED AND SHOULD NOT BE USED WITHOUT WRITTEN PERMISSION		

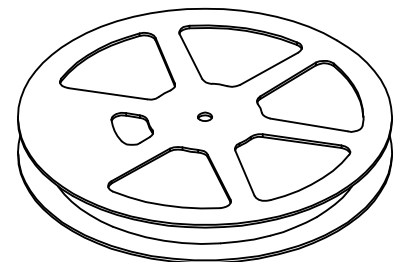
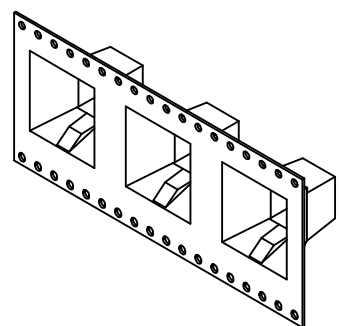
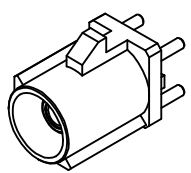


LABEL  
 - PART NUMBER  
 - QUANTITY  
 - DATE  
 - PO NO.

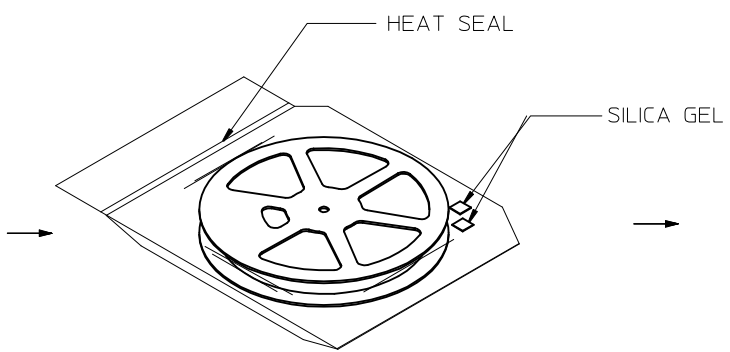


NOTE:  
13" REEL SIZE FOR 150 PIECES

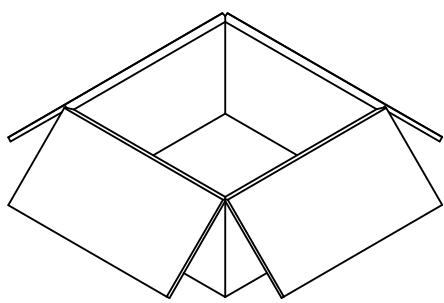
SEE SHEET 1 EC NO: URF2016-0354 DRWNLIN 2015/11/03 CHKD: APPR: YCHENG 2015/11/04	QUALITY SYMBOLS	GENERAL TOLERANCES (UNLESS SPECIFIED)	DIMENSION STYLE	SCALE	DESIGN UNITS	THIRD ANGLE PROJECTION	
	$\nabla=0$ $\nabla=0$	mm    INCH 4 PLACES ± --- ± --- 3 PLACES ± --- ± --- 2 PLACES ± --- ± --- 1 PLACE ± --- ± --- ANGULAR ± 2 °	MM/IN	DRAWN BY    DATE EVITA        2009/12/16 CHECKED BY    DATE ALEX         2009/12/16 APPROVED BY    DATE MI SEN        2009/12/16	METRIC	TITLE SMB JACK,FAKRA, VERTICAL PCB, 50 OHM SMB-J/PCB	MOLEX INCORPORATED DOCUMENT NO. SD-73403-556 SHEET NO. 7 OF 8
	DRAFT WHERE APPLICABLE MUST REMAIN WITHIN DIMENSIONS	SEE TABLE	THIS DRAWING CONTAINS INFORMATION THAT IS PROPRIETARY TO MOLEX INCORPORATED AND SHOULD NOT BE USED WITHOUT WRITTEN PERMISSION				
	A1	REV	SIZE				



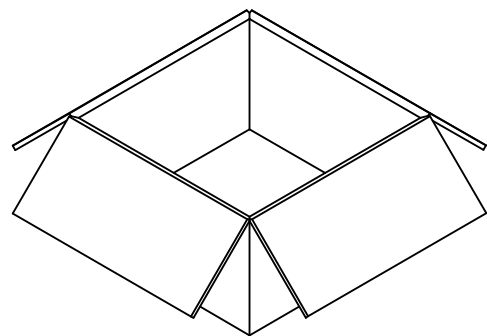
150 SET PER 13" REEL



HDPE BAG



600 SET PER INNER  
CARTON BOX  
343 X 343 X 188 REF



600 SET PER OUTER  
CARTON BOX  
394 X 391 X 212 REF

CHG/SEE SHEET1 EC NO: URF2016-0354 DRW/NELIN 2015/11/03 CHKD: APPR: YCHENG 2015/11/04 (REV)	QUALITY SYMBOLS ▽=0 ▽=0	GENERAL TOLERANCES (UNLESS SPECIFIED)		DIMENSION STYLE MM/IN	SCALE DESIGN UNITS METRIC	THIRD ANGLE PROJECTION	
		4 PLACES ± --- ± --- 3 PLACES ± --- ± --- 2 PLACES ± --- ± --- 1 PLACE ± --- ± ---	mm INCH ± --- ± --- ± --- ± --- ± --- ± --- ± --- ± ---	DRAWN BY DATE EVITA 2009/12/16 CHECKED BY DATE ALEX 2009/12/16 APPROVED BY DATE MISEN 2009/12/16	TITLE SMB JACK,FAKRA, VERTICAL PCB, 50 OHM SMB-J/PCB		
		ANGULAR ± 2 °	DRAFT WHERE APPLICABLE MUST REMAIN WITHIN DIMENSIONS	MATERIAL NO. SEE SHEET 1	MOLEX INCORPORATED	DOCUMENT NO. SD-73403-556	SHEET NO. 8 OF 8
	A1			SIZE C	THIS DRAWING CONTAINS INFORMATION THAT IS PROPRIETARY TO MOLEX INCORPORATED AND SHOULD NOT BE USED WITHOUT WRITTEN PERMISSION		