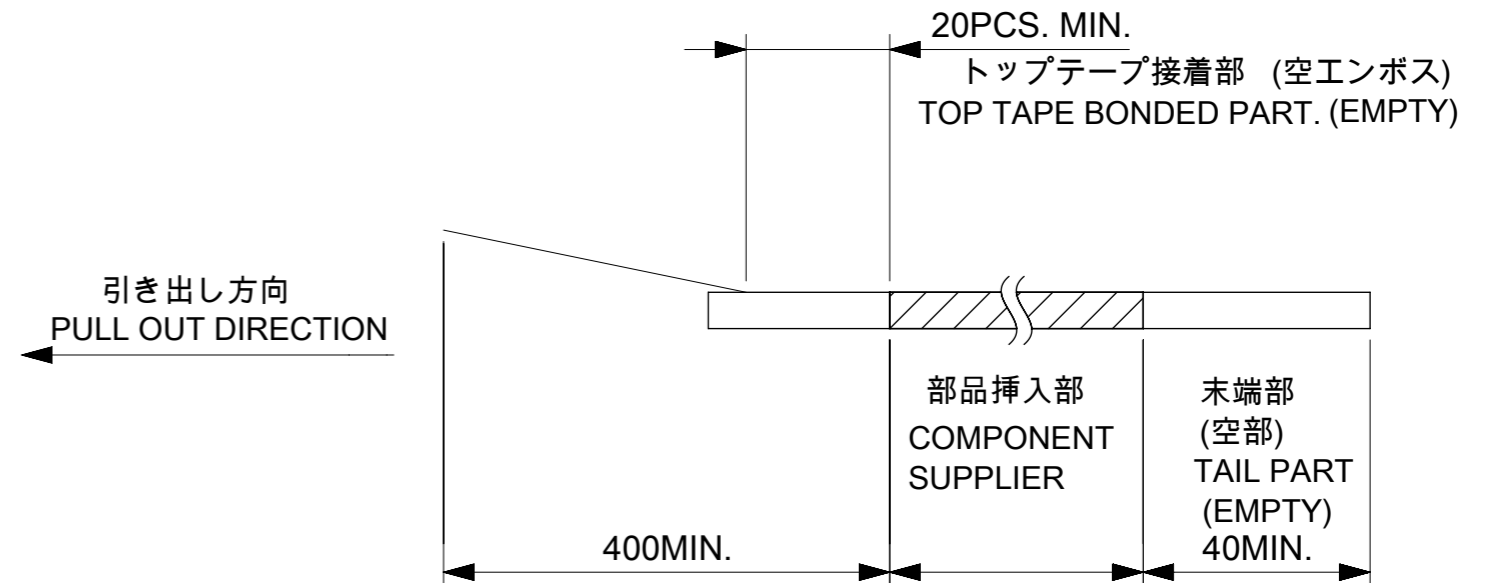
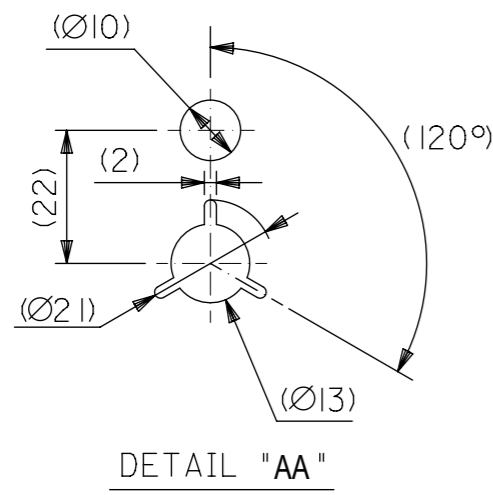
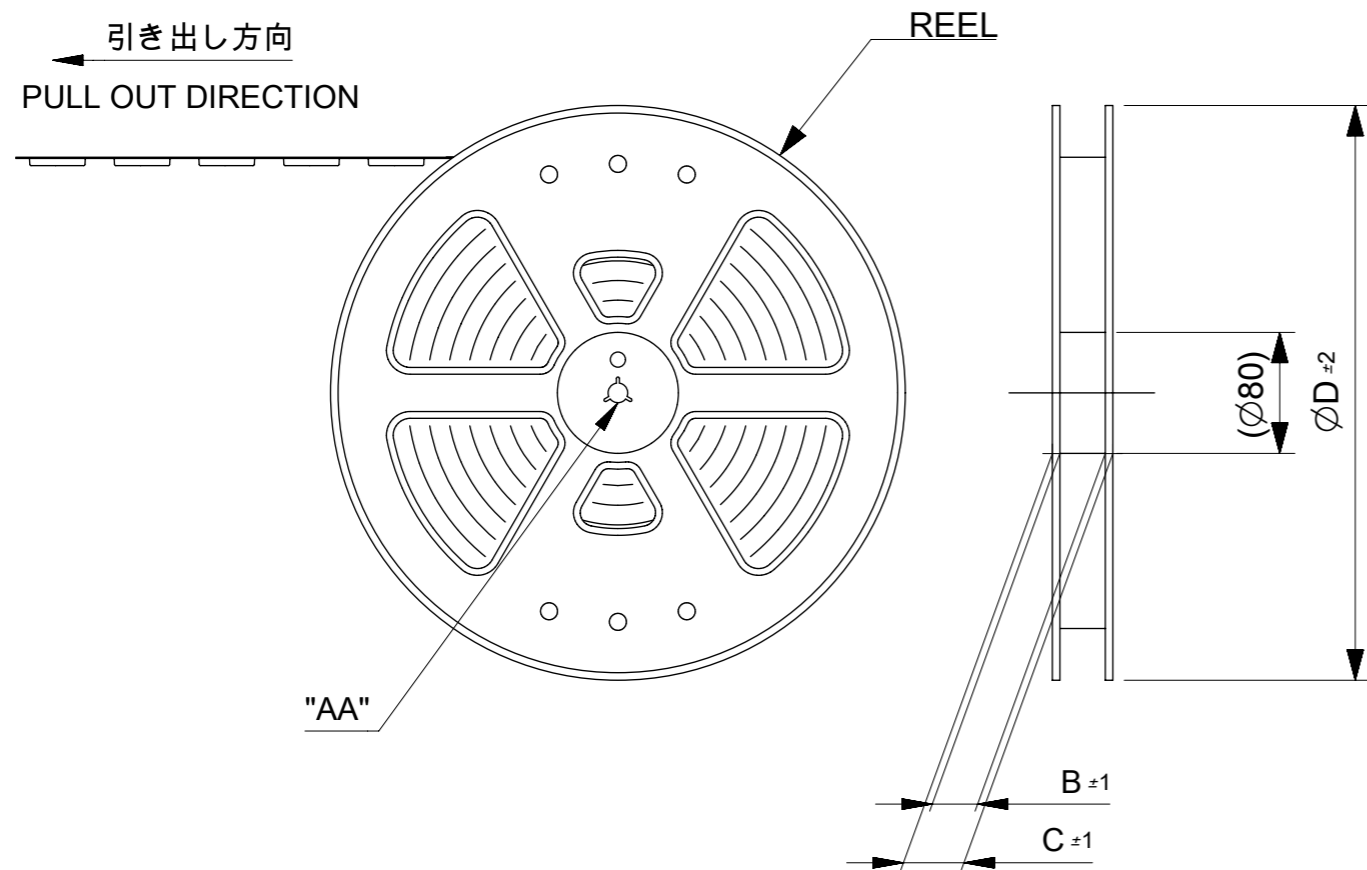


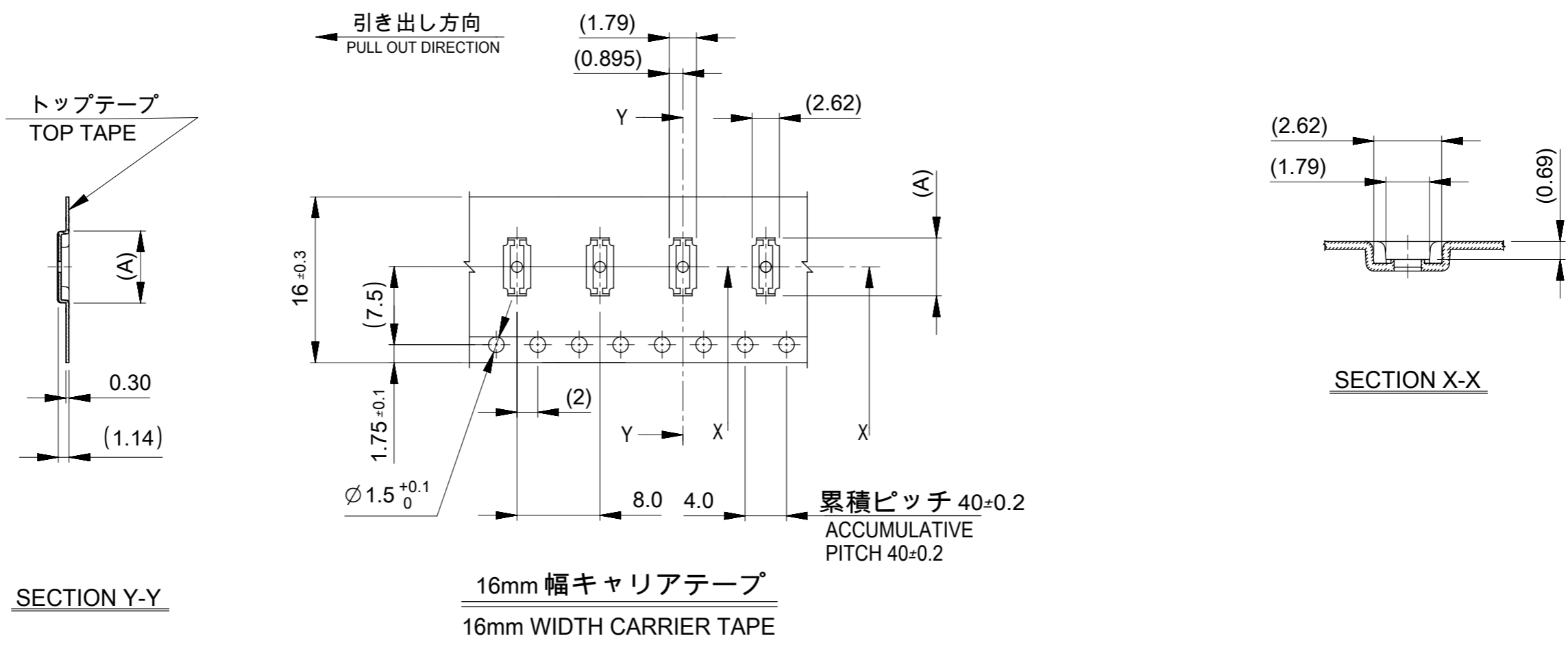
NOTES

- 製品詳細寸法については製品単体図面を参照下さい。
FOR DETAILED DIMENSION, SEE PRODUCT DRAWING.
- 梱包数量：シート2,3の表をご確認ください。
NUMBER OF CONNECTORS：SEE CHART ON SHEET2,3
- リードテープ長さ LEAD TAPE LENGTH



- カバーテープの剥離強度については、IEC-60286-3に準拠
COVER TAPE PEEL FORCE IS DEFINED BY IEC-60286-3.
- 材料 MATERIAL
キャリアテープ(CARRIER TAPE)：ポリスチレン(POLYSTYRENE)
トップテープ(TOP TAPE)：PET, OTHER
リール(REEL)：ポリスチレン(PS) (リサイクル材を含む)
POLYSTYRENE (PS) (RECYCLE MATERIAL CONTAINED)
- ELV 及び RoHS適合品
ELV AND RoHS COMPLIANT

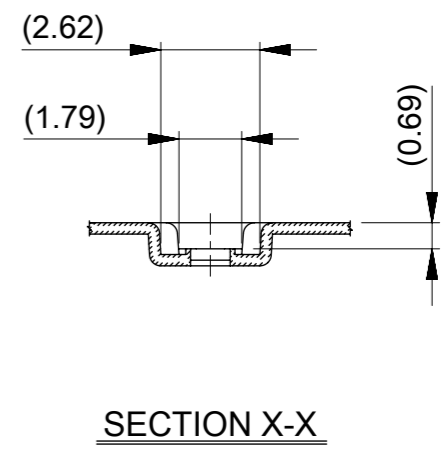
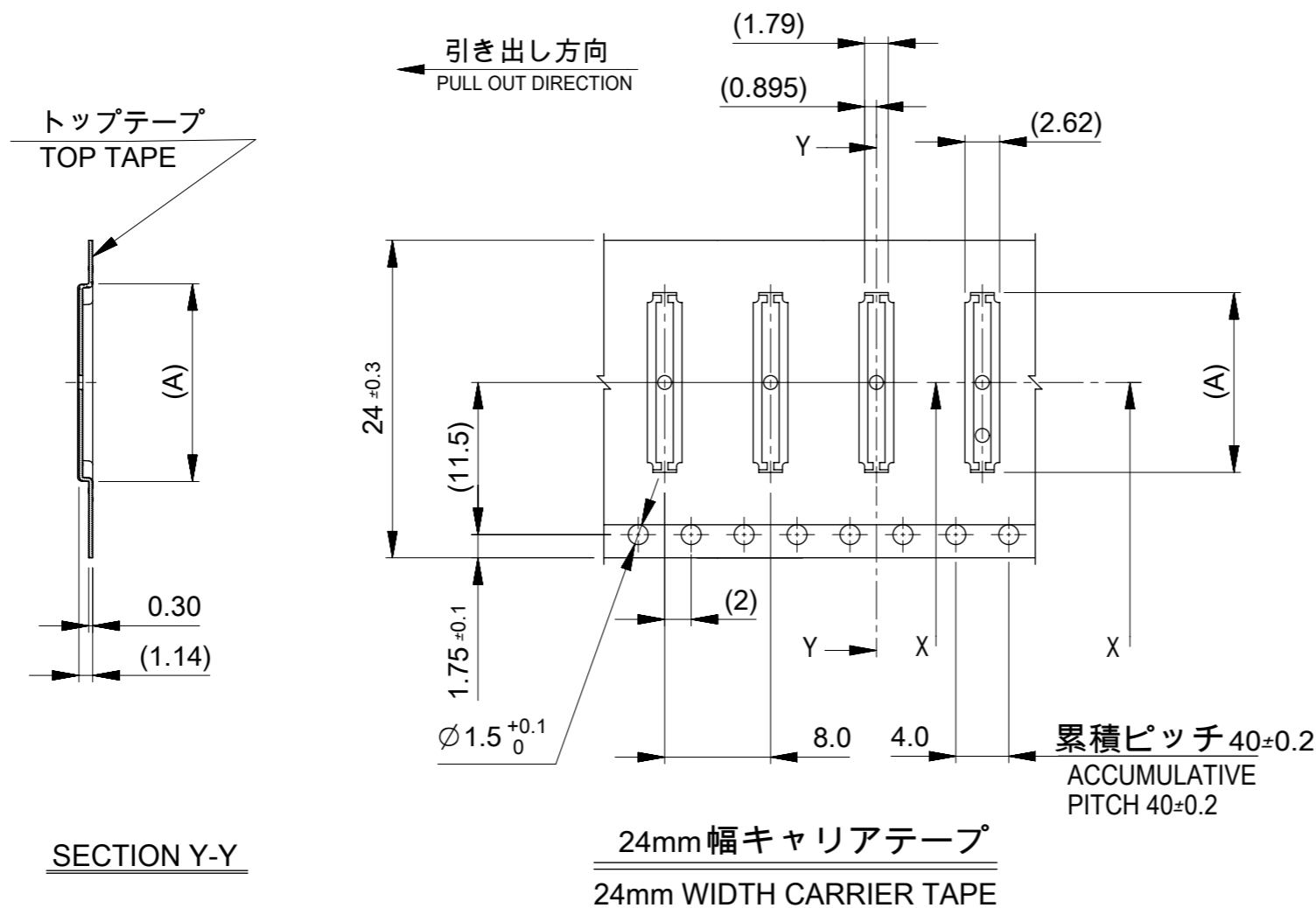
THIS DRAWING CONTAINS INFORMATION THAT IS PROPRIETARY TO MOLEX ELECTRONIC TECHNOLOGIES, LLC AND SHOULD NOT BE USED WITHOUT WRITTEN PERMISSION									
EC NO: 105320 DRWN: YSATO06 CHK'D: TASAKAWA APPR: KMORIKAWA	GENERAL TOLERANCES (UNLESS SPECIFIED)			DIMENSION UNITS	SCALE	molex			
	ANGULAR TOL $\pm 3.0^\circ$			MM	1:1				
	4 PLACES	± 0.03		DRWN BY	DATE	0.4 BB CONN. HGT=0.7 PLUG ASSY EMBSTP PKG			
	3 PLACES	± 0.03		TNISHIDA02	2016/02/24				
	2 PLACES	± 0.05		CHK'D BY	DATE	PRODUCT CUSTOMER DRAWING			
1 PLACE	± 0.1		TASAKAWA	2016/02/29					
0 PLACES	± 0.2		APPR BY	DATE	SERIES MATERIAL NUMBER CUSTOMER 503308 SEE CHART GENERAL				
DRAFT WHERE APPLICABLE MUST REMAIN WITHIN DIMENSIONS			DRAWING SIZE	THIRD ANGLE PROJECTION					DOCUMENT NUMBER DOC TYPE DOC PART SHEET NUMBER 5033080000 PSD 000 1 OF 3
C	REV		A3						



16	380	21.4	17.4	6.79	9000	503308-2652	26
				6.39	9000	503308-2452	24
				5.59	9000	503308-2052	20
				5.19	9000	503308-1852	18
				4.79	9000	503308-1652	16
				3.99	9000	503308-1252	12
キャリアテープ幅 CARRIER TAPE WIDTH				D	C	B	(A)
				NUMBER OF CONNECTORS [PCS/REEL]		MATERIAL No.	CKT.
						MODEL No. 503308-**52	

THIS DRAWING CONTAINS INFORMATION THAT IS PROPRIETARY TO MOLEX ELECTRONIC TECHNOLOGIES, LLC AND SHOULD NOT BE USED WITHOUT WRITTEN PERMISSION

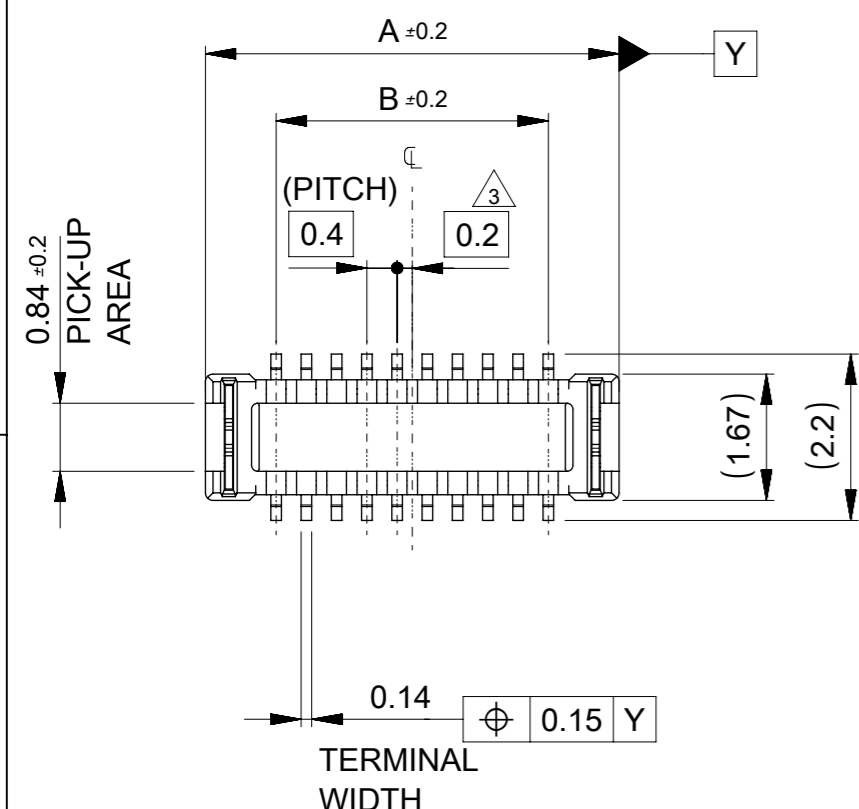
EC NO: 105320 DRWN: YSATO06 CHK'D: TASAKAWA APPR: KMORIKAWA	2016/05/27	GENERAL TOLERANCES (UNLESS SPECIFIED)	DIMENSION UNITS	SCALE	
	2016/06/01	ANGULAR TOL ± 3.0 °	MM	1:1	
	2016/06/01	4 PLACES ± 0.03	DRWN BY	DATE	
		3 PLACES ± 0.03	TNISHIDA02	2016/02/24	
		2 PLACES ± 0.05	CHK'D BY	DATE	
		1 PLACE ± 0.1	TASAKAWA	2016/02/29	
	0 PLACES ± 0.2	APPR BY	DATE		
		KMORIKAWA	2016/02/29	PRODUCT CUSTOMER DRAWING	
	DRAFT WHERE APPLICABLE MUST REMAIN WITHIN DIMENSIONS	DRAWING SIZE	THIRD ANGLE PROJECTION	SERIES	MATERIAL NUMBER
		A3		503308	SEE CHART
				CUSTOMER	GENERAL
				DOCUMENT NUMBER	DOC TYPE
				5033080000	PSD
				DOC PART	SHEET NUMBER
				000	2 OF 3



24	380	29.4	25.4	13.59	9000	503308-6052	60
				11.59	9000	503308-5052	50
				10.39	9000	503308-4452	44
				9.99	9000	503308-4252	42
				9.59	9000	503308-4052	40
				7.59	3000	503308-3052	30
キャリアテープ幅 CARRIER TAPE WIDTH				D	C	B	(A)
				NUMBER OF CONNECTORS [PCS/REEL]		MATERIAL No.	CKT.
						MODEL No.	503308-**52

THIS DRAWING CONTAINS INFORMATION THAT IS PROPRIETARY TO MOLEX ELECTRONIC TECHNOLOGIES, LLC AND SHOULD NOT BE USED WITHOUT WRITTEN PERMISSION

EC NO: 105320 DRWN: YSATO06 CHK'D: TASAKAWA APPR: KMORIKAWA	2016/05/27	2016/06/01	2016/06/01	GENERAL TOLERANCES (UNLESS SPECIFIED) ANGULAR TOL ± 3.0 ° 4 PLACES ± 0.03 3 PLACES ± 0.03 2 PLACES ± 0.05 1 PLACE ± 0.1 0 PLACES ± 0.2 DRAFT WHERE APPLICABLE MUST REMAIN WITHIN DIMENSIONS	DIMENSION UNITS	SCALE			
					MM	1:1			
					DRWN BY	DATE		TNISHIDA02	2016/02/24
					CHK'D BY	DATE		TASAKAWA	2016/02/29
					APPR BY	DATE		KMORIKAWA	2016/02/29
					DRAWING SIZE	THIRD ANGLE PROJECTION		A3	
				PRODUCT CUSTOMER DRAWING					
		SERIES	MATERIAL NUMBER	CUSTOMER					
		503308	SEE CHART	GENERAL					
DOCUMENT NUMBER			DOC TYPE	DOC PART	SHEET NUMBER				
5033080000			PSD	000	3 OF 3				



注記 NOTES

1. 使用材料 MATERIAL

ハウジング : 液晶ポリマー(LCP) UL94V-0 (黒)
HOUSING: LIQUID CRYSTAL POLYMER UL94V-0 (COLOR: BLACK)

ターミナル : 銅合金
TERMINAL: COPPER ALLOY

金具 : 銅合金
FITTING NAIL: COPPER ALLOY

2. メッキ仕様 PLATING

ターミナル TERMINAL

コンタクト部: 部分金メッキ(0.1マイクロメートル以上)
CONTACT AREA: SEPARATED GOLD PLATING (0.1 MICROMETER MINIMUM)

テール部: 部分金メッキ
SOLDER TAIL AREA: SEPARATED GOLD PLATING

下地: ニッケルメッキ(1.0マイクロメートル以上)
UNDERPLATE: NICKEL OVERALL (1.0 MICROMETER MINIMUM)

※コンタクト部とテール部はニッケルメッキによって分断されている金メッキです。
DIVIDE INTO PARTS THE GOLD PLATING OF THE CONTACT AND THE TAIL PART BY THE NICKEL PLATING.

金具 FITTING NAIL

テール部: 錫メッキ(1.0マイクロメートル以上)
SOLDER TAIL AREA: TIN PLATING (1.0 MICROMETER MINIMUM)

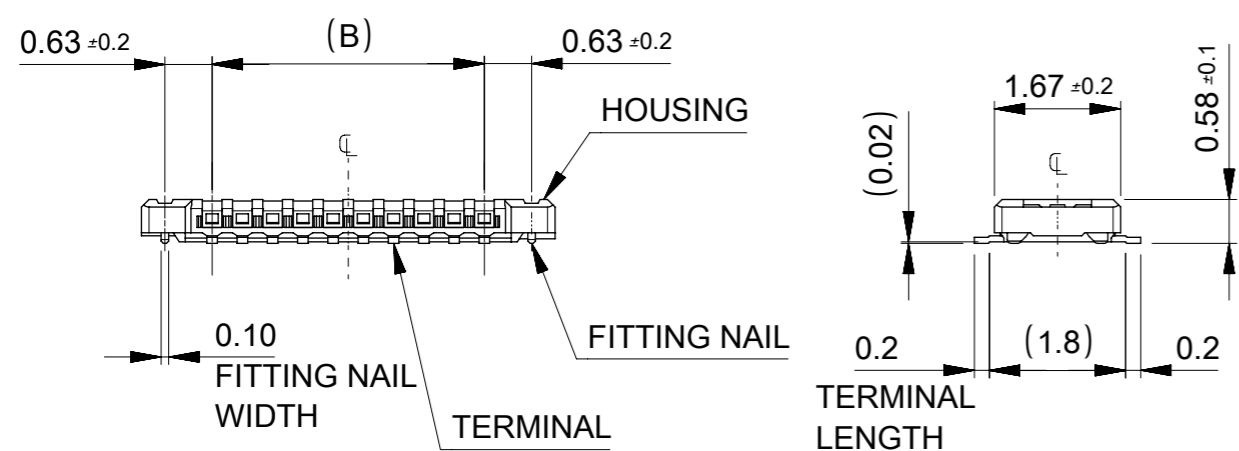
下地: ニッケルメッキ(1.0マイクロメートル以上)
UNDERPLATE: NICKEL OVERALL (1.0 MICROMETER MINIMUM)

△₃ (全極数/2)=偶数の場合に適用。
APPLY FOR (CIRCUIT/2)=EVEN.

4. 嵌合相手: 503304シリーズ
MATE WITH: 503304 SERIES.

5. テール及び金具の平坦度は、0.1以下
TAIL AND FITTING NAIL COPLANARITY TO BE 0.1 MAXIMUM.

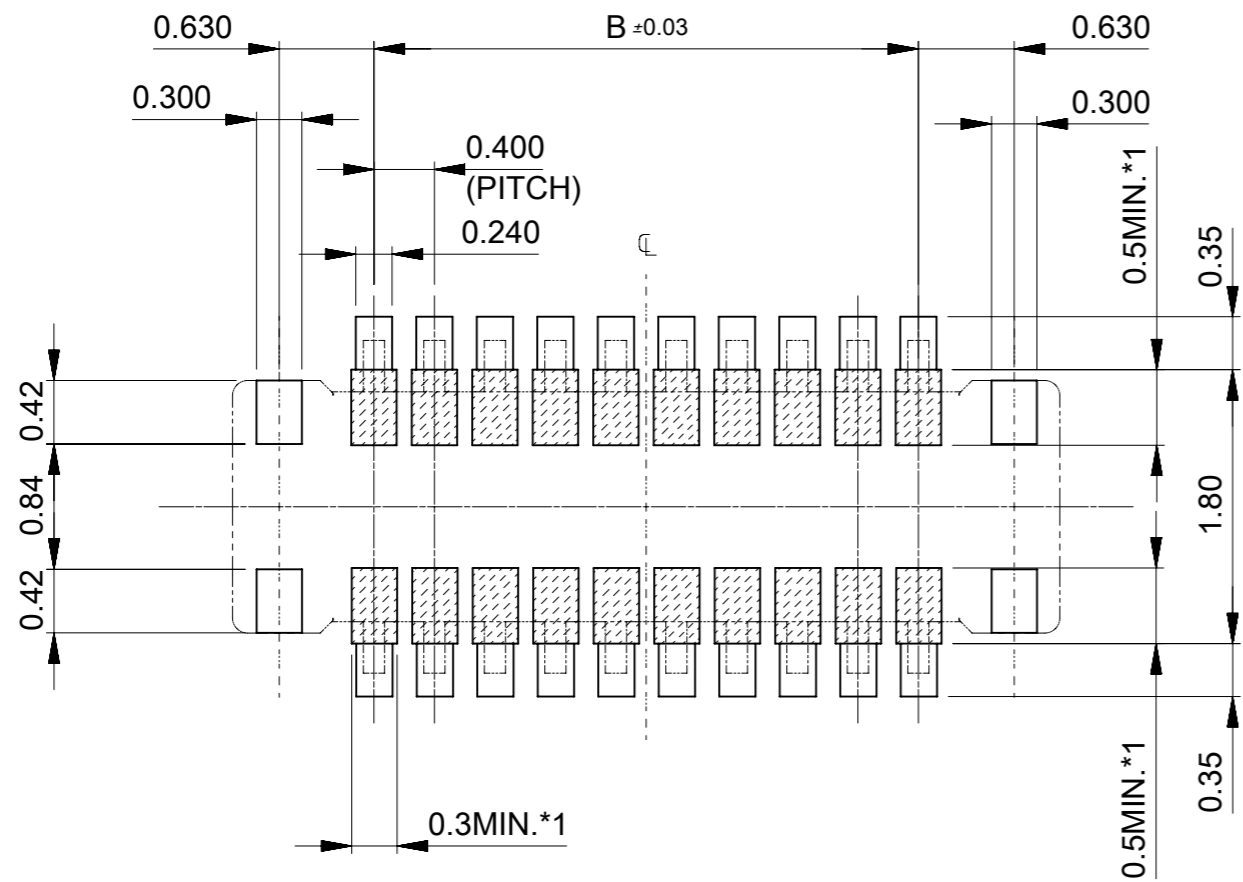
6. ELV及びRoHS適合品
ELV and RoHS COMPLIANT.



11.6	13.47	503308-6052	60
9.6	11.47	503308-5052	50
8.4	10.27	503308-4452	44
8.0	9.87	503308-4252	42
7.6	9.47	503308-4052	40
5.6	7.47	503308-3052	30
4.8	6.67	503308-2652	26
4.4	6.27	503308-2452	24
3.6	5.47	503308-2052	20
3.2	5.07	503308-1852	18
2.8	4.67	503308-1652	16
2.0	3.87	503308-1252	12
B	A	EMBOSSED PACKAGE	
		オーダー番号 ORDER No.	
		CONNECTOR SERIES No.: 503308-**58	
		極数	CIRCUITS

THIS DRAWING CONTAINS INFORMATION THAT IS PROPRIETARY TO MOLEX ELECTRONIC TECHNOLOGIES, LLC AND SHOULD NOT BE USED WITHOUT WRITTEN PERMISSION

EC NO: 105320 DRWN: TNISHIDA02 CHK'D: TASAKAWA APPR: KMORIKAWA	2016/05/30	2016/06/01	2016/06/01	GENERAL TOLERANCES (UNLESS SPECIFIED) ANGULAR TOL ± 3.0 ° 4 PLACES ± 0.03 3 PLACES ± 0.03 2 PLACES ± 0.05 1 PLACE ± 0.1 0 PLACES ± 0.2 DRAFT WHERE APPLICABLE MUST REMAIN WITHIN DIMENSIONS	DIMENSION UNITS	SCALE			
					MM	10:1			
					DRWN BY	DATE		TNISHIDA02	2016/02/24
					CHK'D BY	DATE		TASAKAWA	2016/02/29
					APPR BY	DATE		KMORIKAWA	2016/02/29
				DRAWING SIZE	THIRD ANGLE PROJECTION		PRODUCT CUSTOMER DRAWING		
				A3			SERIES: 503308		
							MATERIAL NUMBER: SEE CHART		
							CUSTOMER: GENERAL		
							DOCUMENT NUMBER: 5033081000		
							DOC TYPE: PSD		
							DOC PART: 000		
							SHEET NUMBER: 1 OF 2		



RECOMMENDED P.W. BOARD PATTERN LAYOUT(REFERENCE)

THICKNESS OF METAL MASK FOR REFERENCE : t=0.1mm
 OPEN APERTURE RATIO OF METAL MASK FOR REFERENCE : 100%

- *1 パターン引き回し、および半田禁止エリア
 (当該箇所においては、これと接する回路以外の配線を禁止する。
 また、接する回路を配線する場合はレジストを施し、この部分に
 半田は無きこととする。)
- *1 PROHIBITED AREA OF PATTERN WIRING AND SOLDER.
 (FOR EACH AREA, THE WIRING THAT TOUCHES ON THE SOLDER
 CAN BE ATTACHED, THEN COVERED WITH A FILM TO KEEP SOLDER OUT.)

THIS DRAWING CONTAINS INFORMATION THAT IS PROPRIETARY TO MOLEX ELECTRONIC TECHNOLOGIES, LLC AND SHOULD NOT BE USED WITHOUT WRITTEN PERMISSION

EC NO: 105320 DRWN: TNISHIDA02 CHK'D: TASAKAWA APPR: KMORIKAWA	GENERAL TOLERANCES (UNLESS SPECIFIED)		DIMENSION UNITS	SCALE				
	ANGULAR TOL ± 3.0 °		MM	10:1				
	4 PLACES	± 0.03	DRWN BY	DATE	0.4 BB CONN.HGT=0.7 W=2.6 PLUG ASS'Y			
	3 PLACES	± 0.03	TNISHIDA02	2016/02/24				
	2 PLACES	± 0.05	CHK'D BY	DATE	PRODUCT CUSTOMER DRAWING			
	1 PLACE	± 0.1	TASAKAWA	2016/02/29				
0 PLACES	± 0.2	APPR BY	DATE	SERIES	MATERIAL NUMBER	CUSTOMER		
DRAFT WHERE APPLICABLE MUST REMAIN WITHIN DIMENSIONS		KMORIKAWA	2016/02/29	503308	SEE CHART	GENERAL		
DIMENSION UNITS: MM SCALE: 10:1 DRAWING SIZE: A3 THIRD ANGLE PROJECTION		DOCUMENT NUMBER: 5033081000 DOC TYPE: PSD DOC PART: 000 SHEET NUMBER: 2 OF 2						