

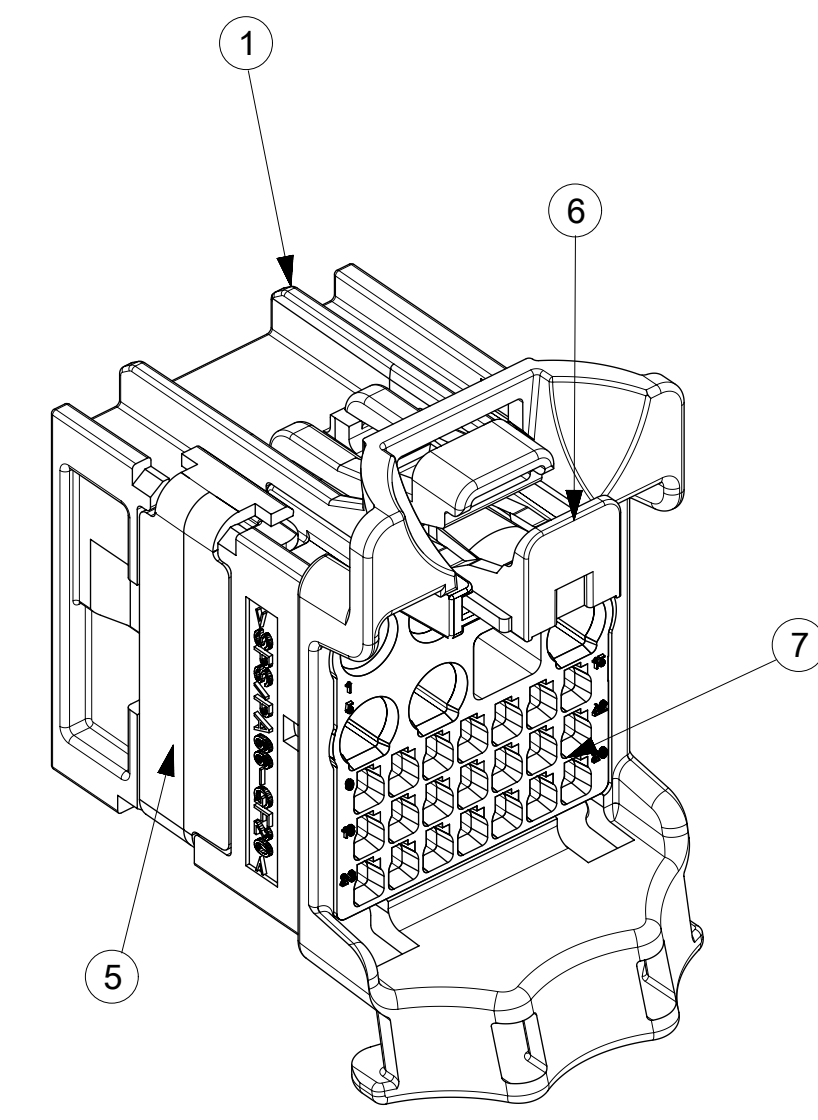
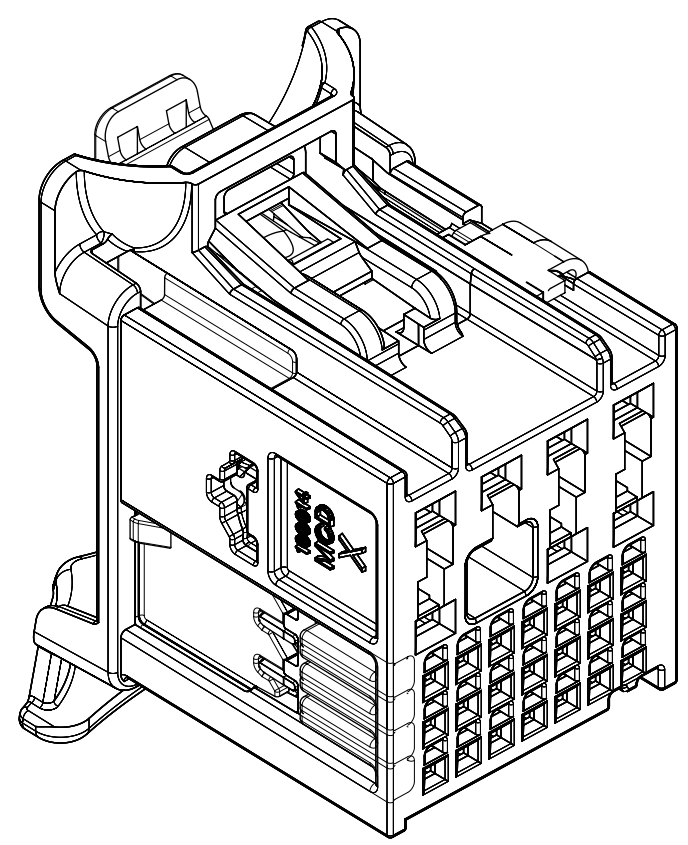
- NOTES: VALID UNLESS OTHERWISE SPECIFIED
- GENERAL:
    - APPLICATION SPECIFICATION SEE: AS-160014-001
    - PRODUCT SPECIFICATION SEE: PS-160014-001
    - PACKAGING SPECIFICATION PER MOLEX DRAWING: PK-31302-266
    - PARTS MUST BE IN COMPLIANCE TO MOLEX CHEMICAL SUBSTANCES FOR PRODUCTS AND PACKAGING SPECIFICATION: ES-40000-5016
    - DATA MUST BE SUBMITTED UNDER THE MOLEX PART NUMBER TO IMDS (COMPANY ID#13255)
  - DESIGN - MATERIALS:
    - SEE BOM TABLE
  - DESIGN - GEOMETRY:
    - ALL GRAPHIC DATA IS BASIC (NO TOLERANCE) AND MUST BE TAKEN FROM THE DATA FILE AT ITS LATEST REVISION.
    - PRODUCT DESIGN MODEL NUMBER(S): SEE BOM TABLE
    - GEOMETRIC DIMENSIONS AND TOLERANCES PER ASME Y14.5M-2009
    - EDGES AND UNDIMENSIONED DETAILS PER ISO13715
    - CORNERS SHOWN AS SHARP TO BE R 0.2 MAX.
    - MARKED TEXT TO INCLUDE RECYCLING CODE, CAVITY ID, VENDOR IDENTIFICATION, AND CUSTOMER MATERIAL NUMBER.
      - LASER ETCHED DATE CODE
        - 1ST THROUGH 2ND DIGIT = CALENDAR YEAR
        - 3RD THROUGH 5TH DIGIT = "DAY #" OF YEAR
        - 6TH THROUGH 7TH DIGIT = HOUR OF DAY
        - 8TH THROUGH 9TH DIGIT = MINUTE OF HOUR
        - 10TH THROUGH 11TH DIGIT = SECOND OF MINUTE
  - DESIGN - MANUFACTURING:
    - VISUAL DEFECTS SHALL MEET COSMETIC STANDARD PS-45499-002 (Class B)

ITEM	DESCRIPTION	COLOR	RECYCLING CODE	WEIGHT (GRAMS)	NO OF ITEMS REQUIRED
1	OUTER SHROUD - KEY 1	DARK GRAY	SPS/PA66-GF20	2.9	1
2	OUTER SHROUD - KEY 2	LT GREEN A	SPS/PA66-GF20	2.9	1
3	OUTER SHROUD - KEY3	LT GRAY	SPS/PA66-GF20	2.9	1
4	OUTER SHROUD - KEY 4	BLACK	SPS/PA66-GF20	2.9	1
5	ISL	NATURAL	SPS-GF30	0.34	1 1 1 1
6	CPA	NATURAL	PA66-GF50	0.08	1 1 1 1
7	INNER HOUSING	STONE GRAY	SPS/PA-GF20	1.48	1 1 1 1

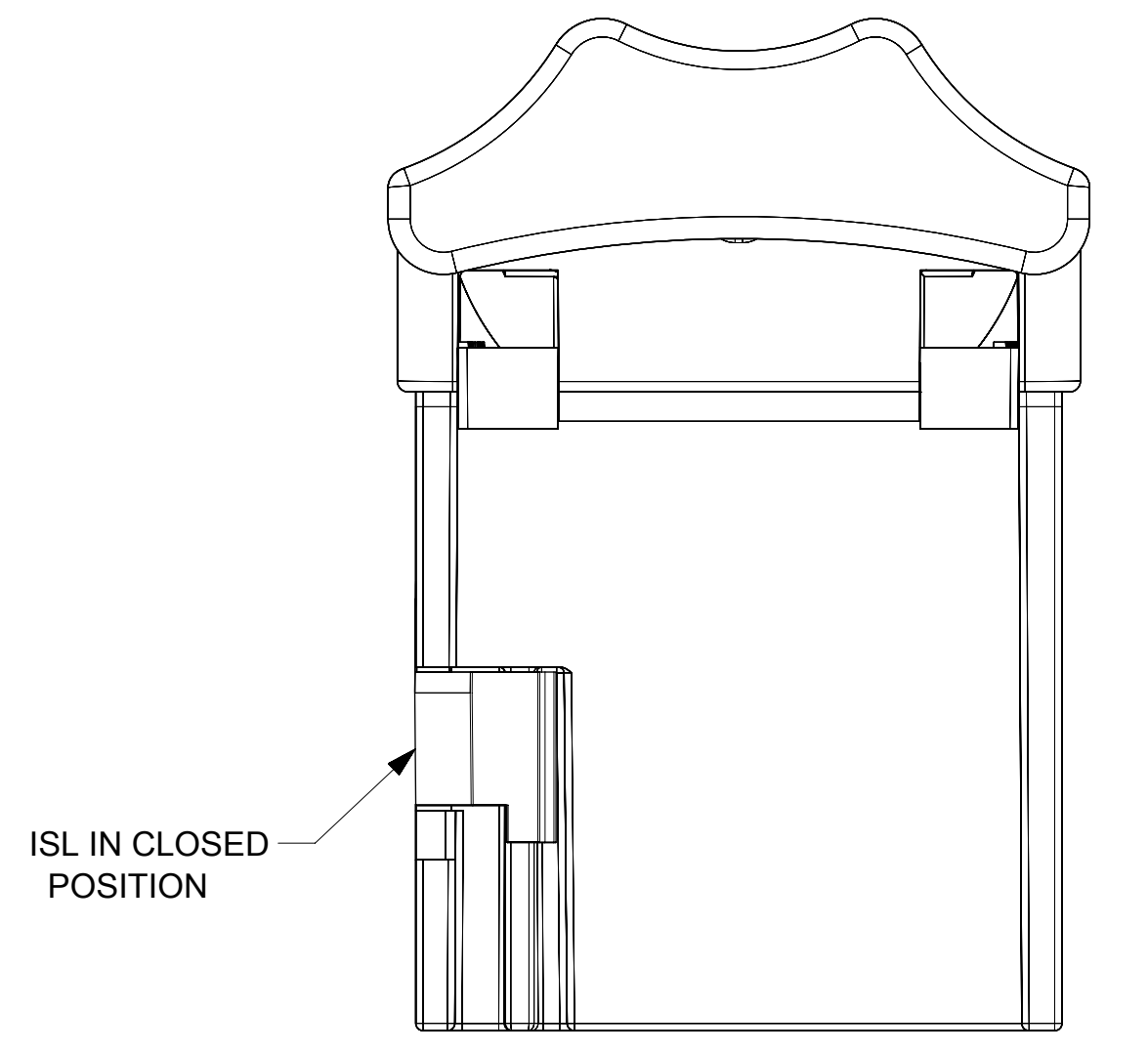
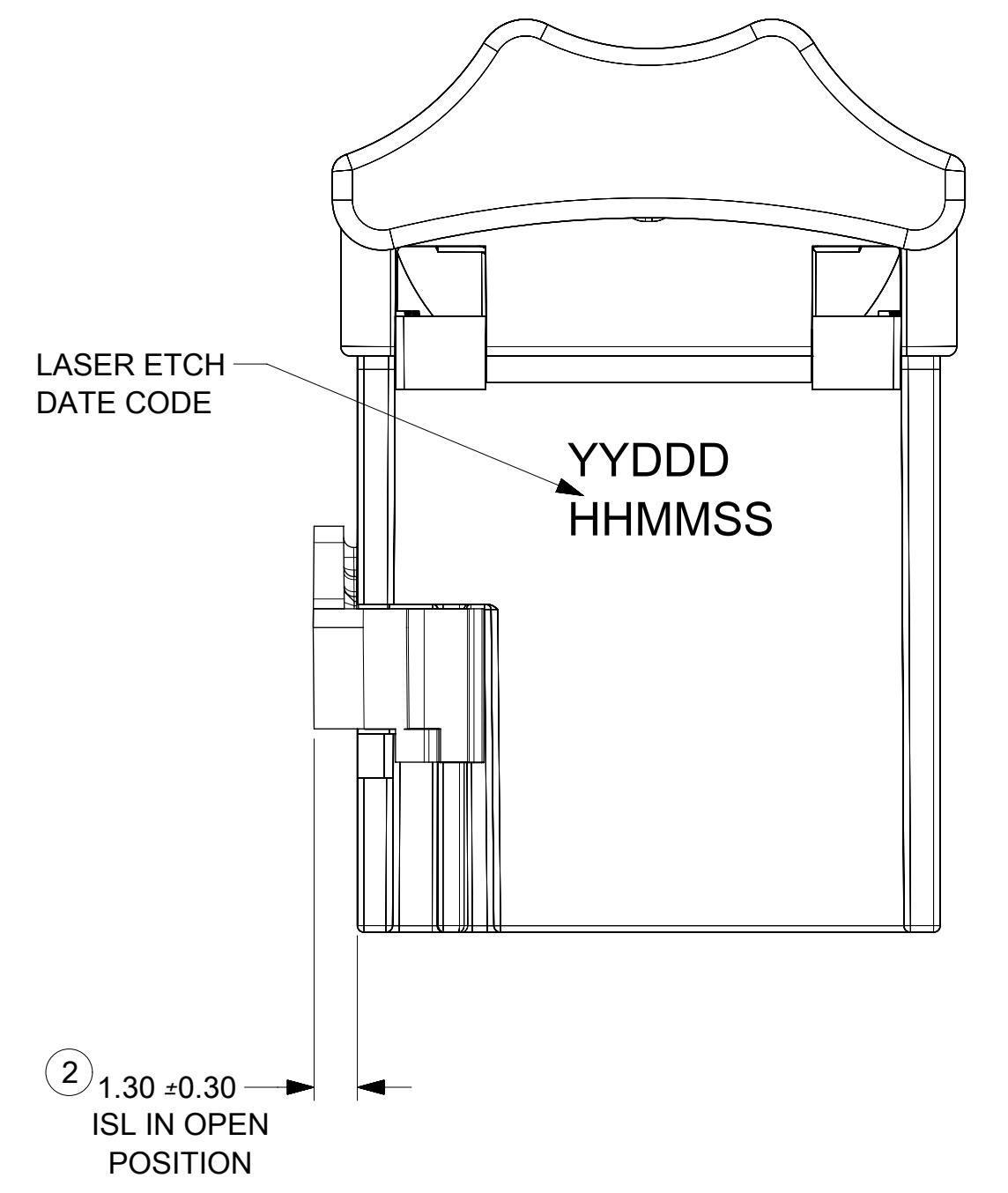
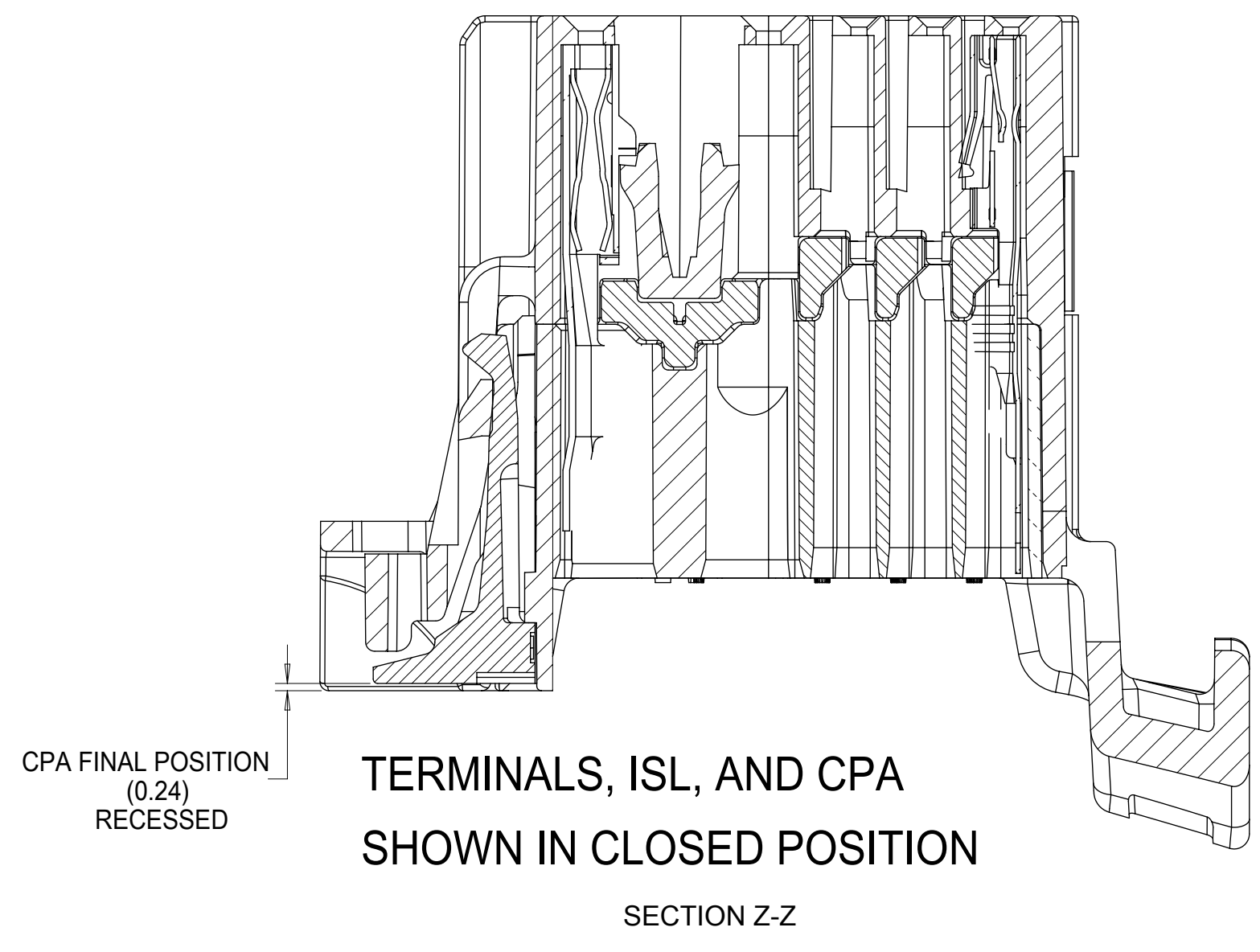
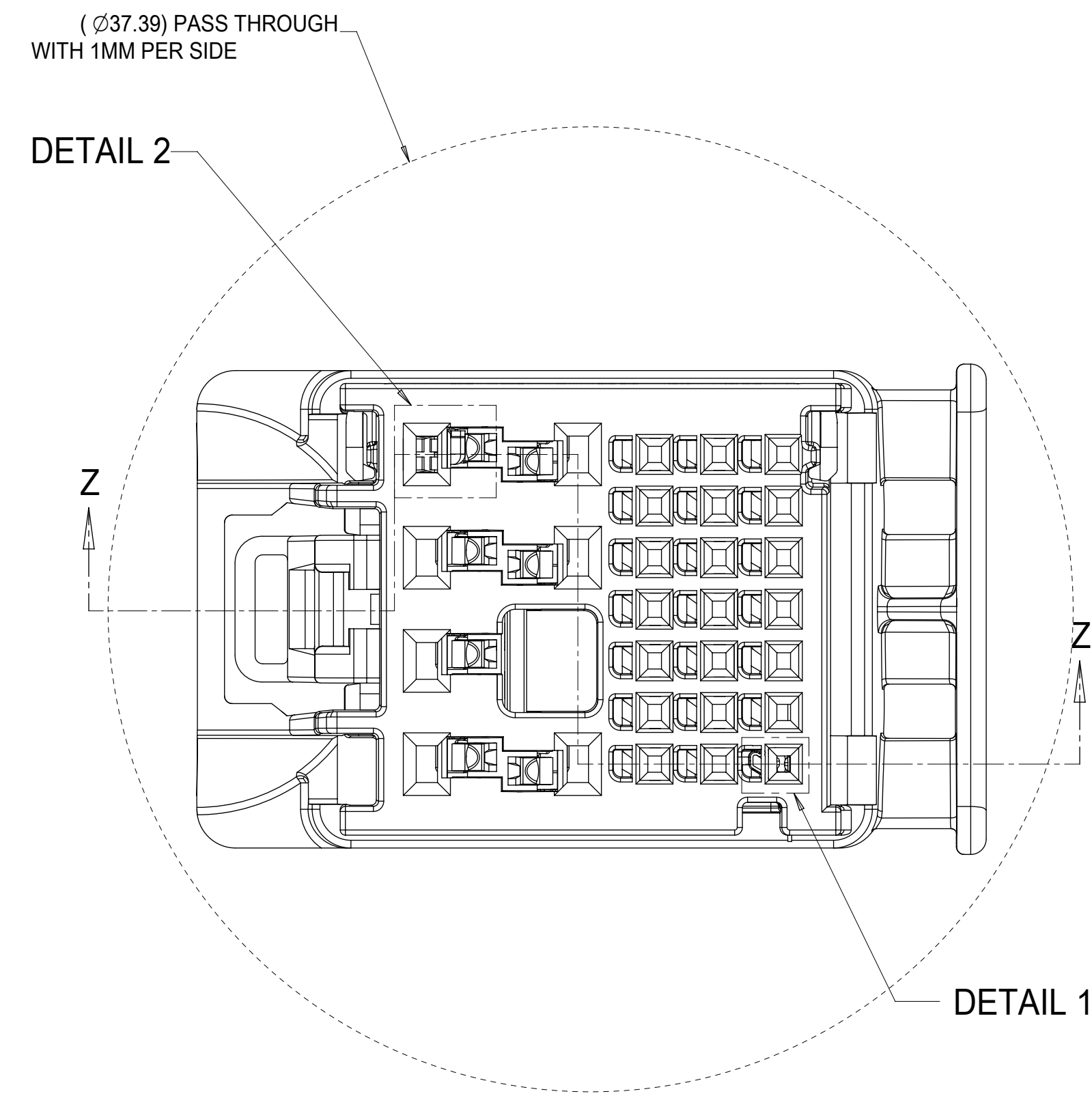
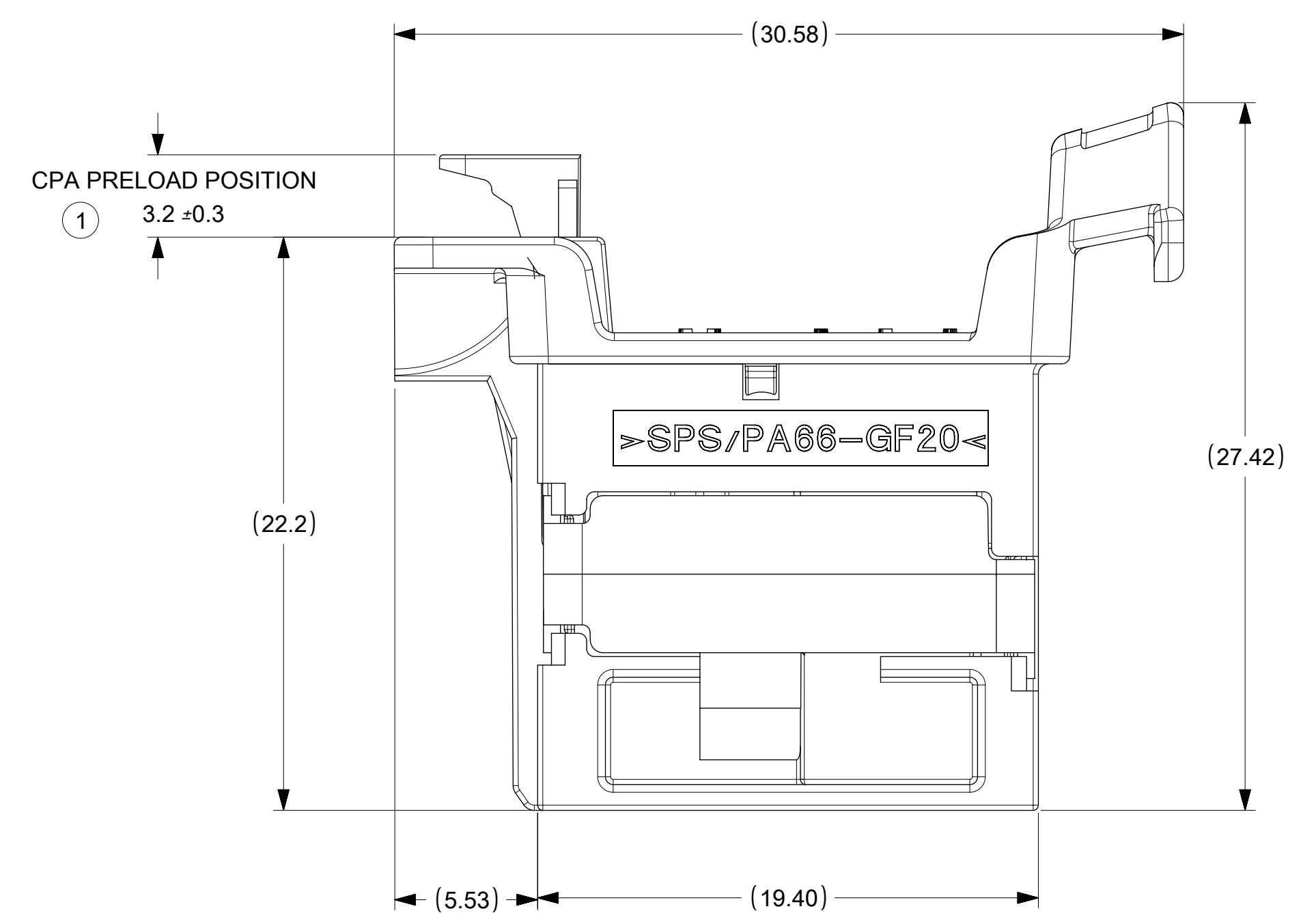
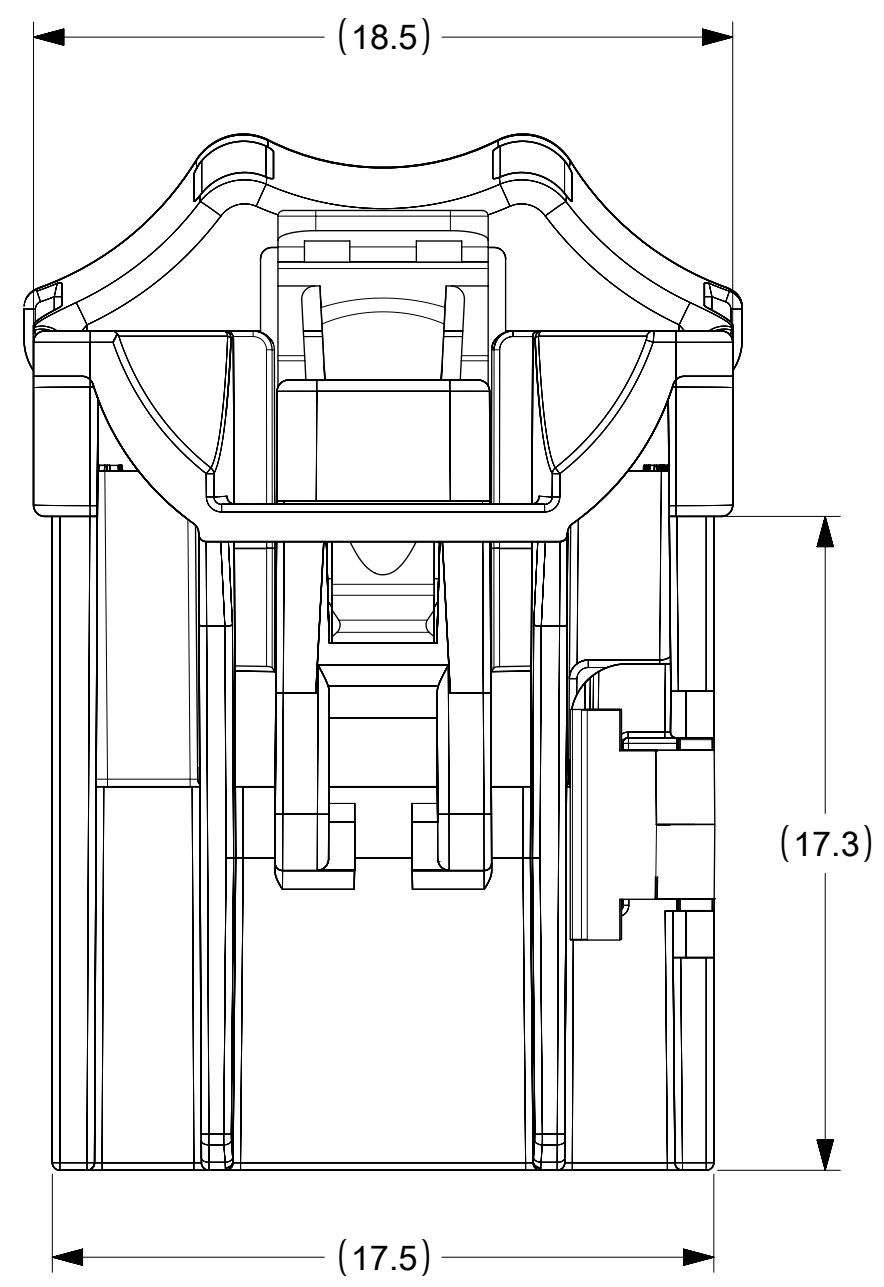
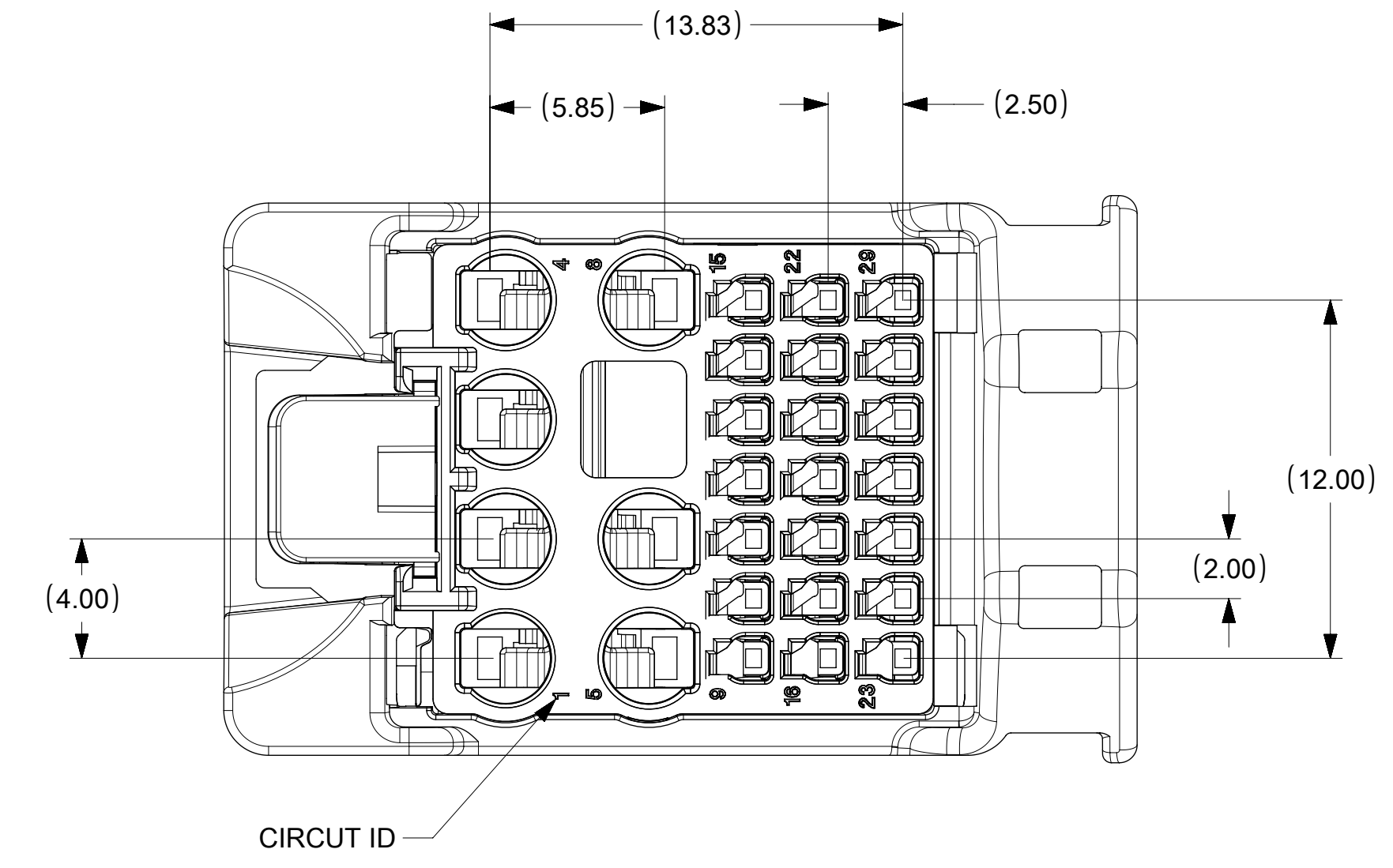
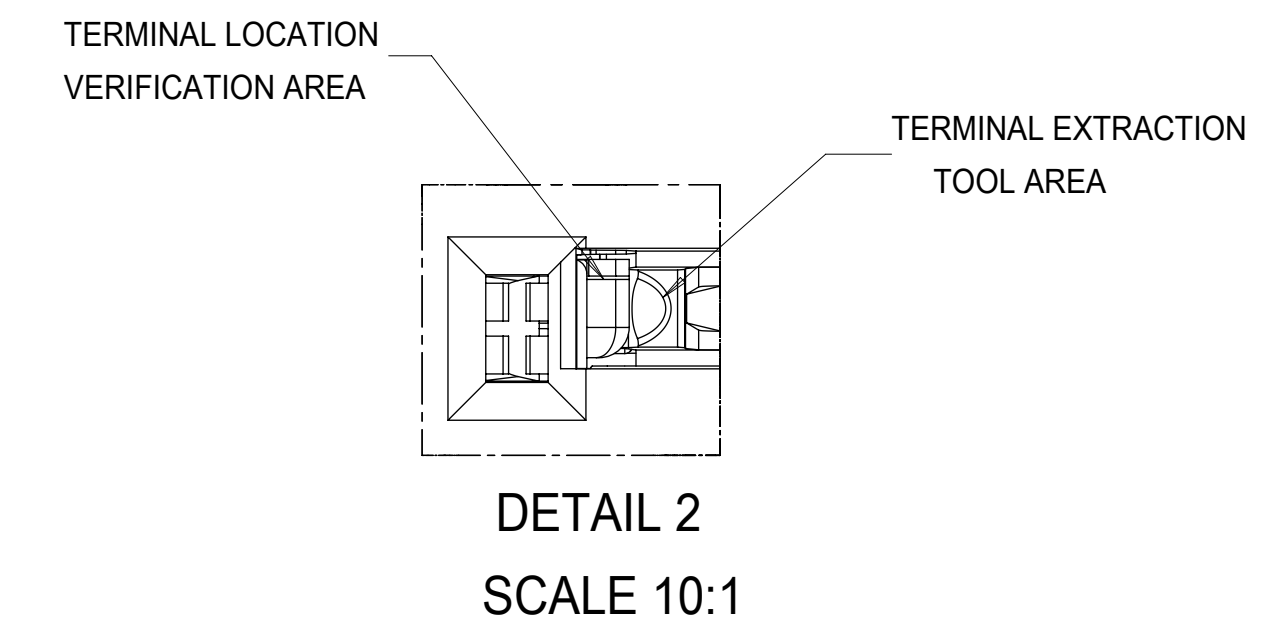
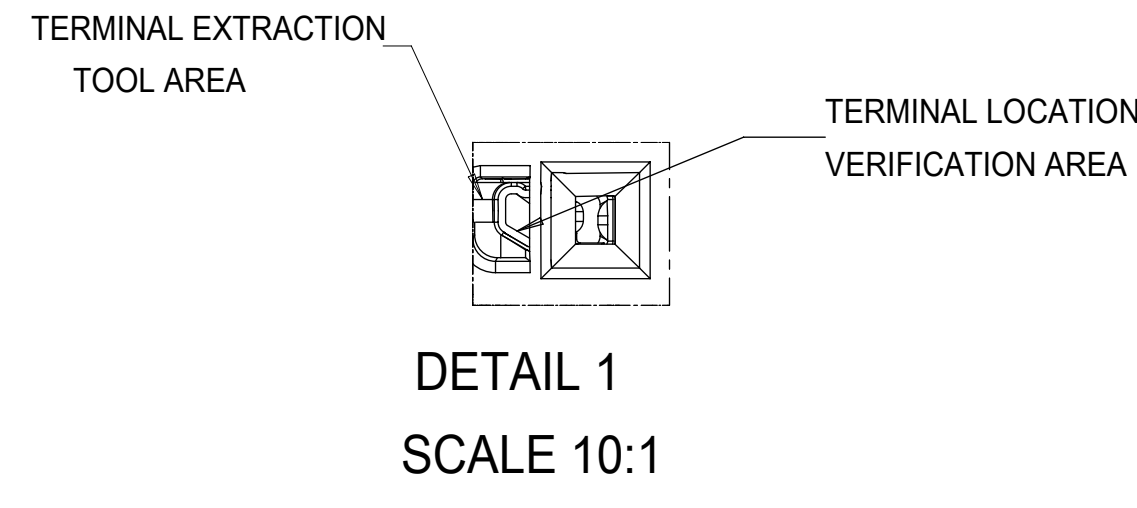
MOLEX ASSEMBLY PART NO.'S	KEY
1600140001	KEY 1
1600140002	KEY 2
1600140003	KEY 3
1600140004	KEY 4

PART NUMBER	PLATING	SUPPLIER	WIRE GAGE (mm2)	TERMINAL FAMILY	WIRE SPECIFICATION
2-1703930-1	TIN PLATING	TE	0.22 - 0.35	NanoMQS SOCKET CONTACT (0.5 mm)	SAE/ J1128 THIN WALL INSULATION
1-1703930-1	TIN PLATING	TE	0.13 - 0.17	NanoMQS SOCKET CONTACT (0.5 mm)	
13881789	TIN PLATING	DELPHI	0.35 - 0.5	TAXI TERM OCS 1.2	
13881788	TIN PLATING	DELPHI	0.75 - 0.8	TAXI TERM OCS 1.2	GMW 15626 INSULATION TYPE FLR (REGULAR THIN WALL)
SMSA-A031T-M1.2	TIN PLATING	JST	0.5 - 0.75	MSA 1.2mm TERMINAL	
SMSA-A041T-M1.2	TIN PLATING	JST	1.0 - 1.5	MSA 1.2mm TERMINAL	



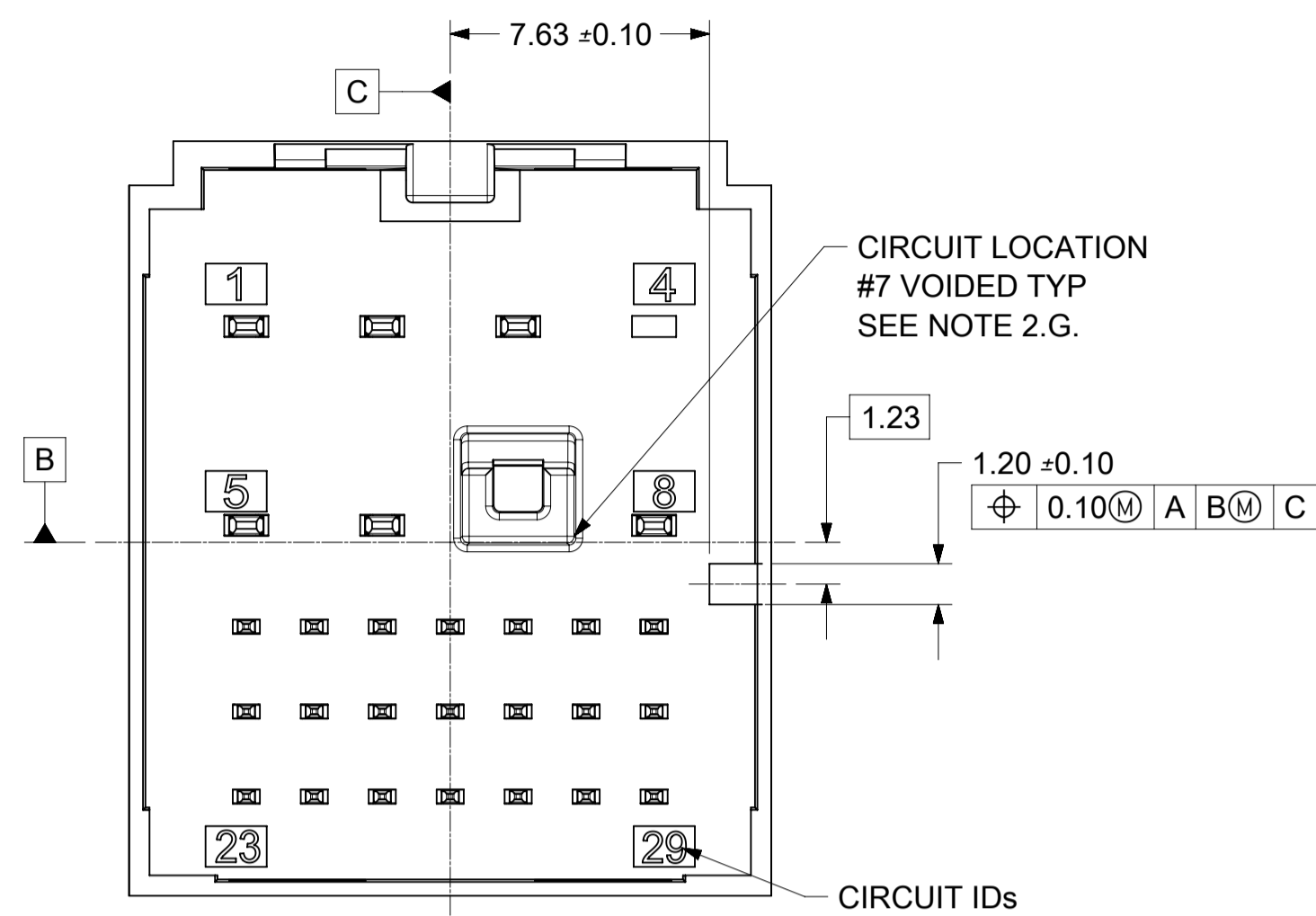
A1	NX RE-MASTERING SAP # 10816434
A	UAU2017-0137 SAP # 10789287 JCONDON 08/13/2016
7	UAU2016-1182 SAP # 10762453 JCONDON 02/08/2016
6	UAU2015-1899 SAP # 10698159 JCONDON 06/17/2015
5	UAU2015-1606 SAP # 10685685 JCONDON 04/23/2015
4	UAU2015-0824 SAP # XXXXXX JCONDON 12/05/2014
3	UAU2014-1923 SAP # XXXXXXXX BSCUDDER 05/19/2014
2	UAU2014-1726 SAP # XXXXXXXX CBOWDEN 10/22/2013
1	UAU2014-0633 SAP # XXXXXXXX KDEKOSKI 10/09/2013

QUALITY SYMBOLS F = 0 E = 0 E = 0 = 0 C = 0 X = 0 = 0 = 0	THIS DRAWING CONTAINS INFORMATION THAT IS PROPRIETARY TO MOLEX ELECTRONIC TECHNOLOGIES, LLC AND SHOULD NOT BE USED WITHOUT WRITTEN PERMISSION	GENERAL TOLERANCES (UNLESS SPECIFIED) ANGULAR TOL ± 3.0 ° 4 PLACES ± 3 PLACES ± 2 PLACES ± 0.3 1 PLACE ± 0.3 0 PLACES ± 0.3	DIMENSION UNITS: MM SCALE: 5:1 DRWN BY: KDEKOSKI DATE: 2013/10/09 CHKD BY: JCONDON DATE: 2013/12/06 APPR BY: KDEKOSKI DATE: 2017/03/23	<b>molex</b> 28WAY STAK50H HYBRID CONNECTOR ASSEMBLY PRODUCT CUSTOMER DRAWING	
	EC NO: 112412 DRWN: VYARAPPA CHKD: KDEKOSKI REV: APPR:	DRAWING SIZE: D THIRD ANGLE PROJECTION	SERIES: 160014 MATERIAL NUMBER: CHARTED CUSTOMER: GENERAL MARKET	DOCUMENT NUMBER: SD-160014-0001 DOC TYPE: PSD DOC PART NUMBER: 000 SHEET NUMBER: 1 OF 2	
	A1				

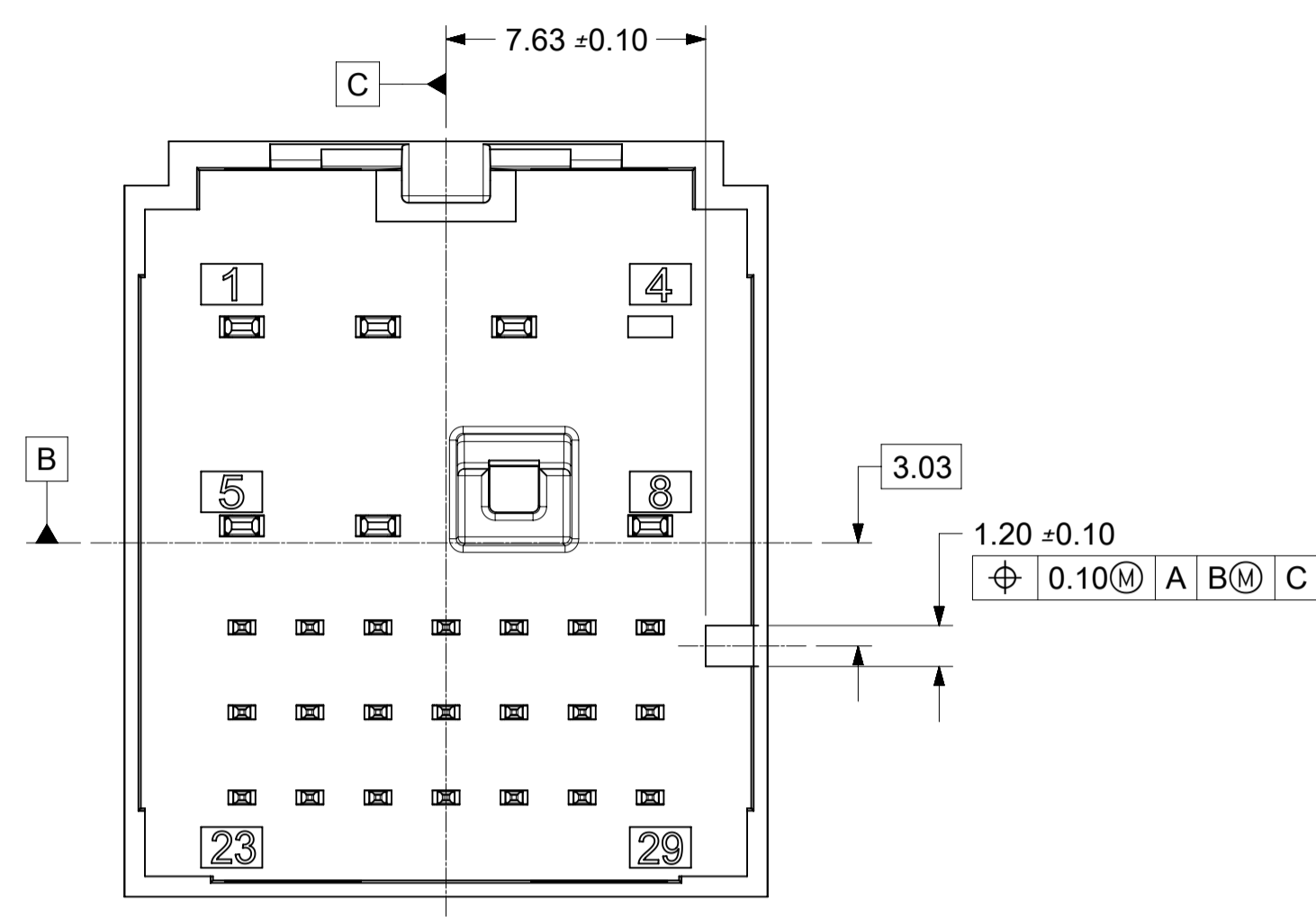


THIS DRAWING CONTAINS INFORMATION THAT IS PROPRIETARY TO MOLEX ELECTRONIC TECHNOLOGIES, LLC AND SHOULD NOT BE USED WITHOUT WRITTEN PERMISSION										
QUALITY SYMBOLS	2017/02/06	GENERAL TOLERANCES (UNLESS SPECIFIED)	DIMENSION UNITS	SCALE						
▽ = 0	2017/03/23	ANGULAR TOL ±	MM	5:1						
▽ = 0		4 PLACES ±	DRWN BY	DATE						
▽ = 0		3 PLACES ±	KDEKOSKI	2013/10/09						
▽ = 0		2 PLACES ± 0.3	CHKD BY	DATE	PRODUCT CUSTOMER DRAWING					
▽ = 0		1 PLACE ± 0.3	JCONDON	2013/12/06	SERIES	MATERIAL NUMBER	CUSTOMER	GENERAL MARKET		
▽ = 0		0 PLACES ± 0.3	APPR BY	DATE	160014	SEE SHEET 1				
▽ = 0		DRAFT WHERE APPLICABLE MUST REMAIN WITHIN DIMENSIONS	KDEKOSKI	2014/06/16	DOCUMENT NUMBER	DOC TYPE	DOC PART	SHEET NUMBER	2 OF 2	
▽ = 0					SD-160014-0001	PSD	000			
▽ = 0										

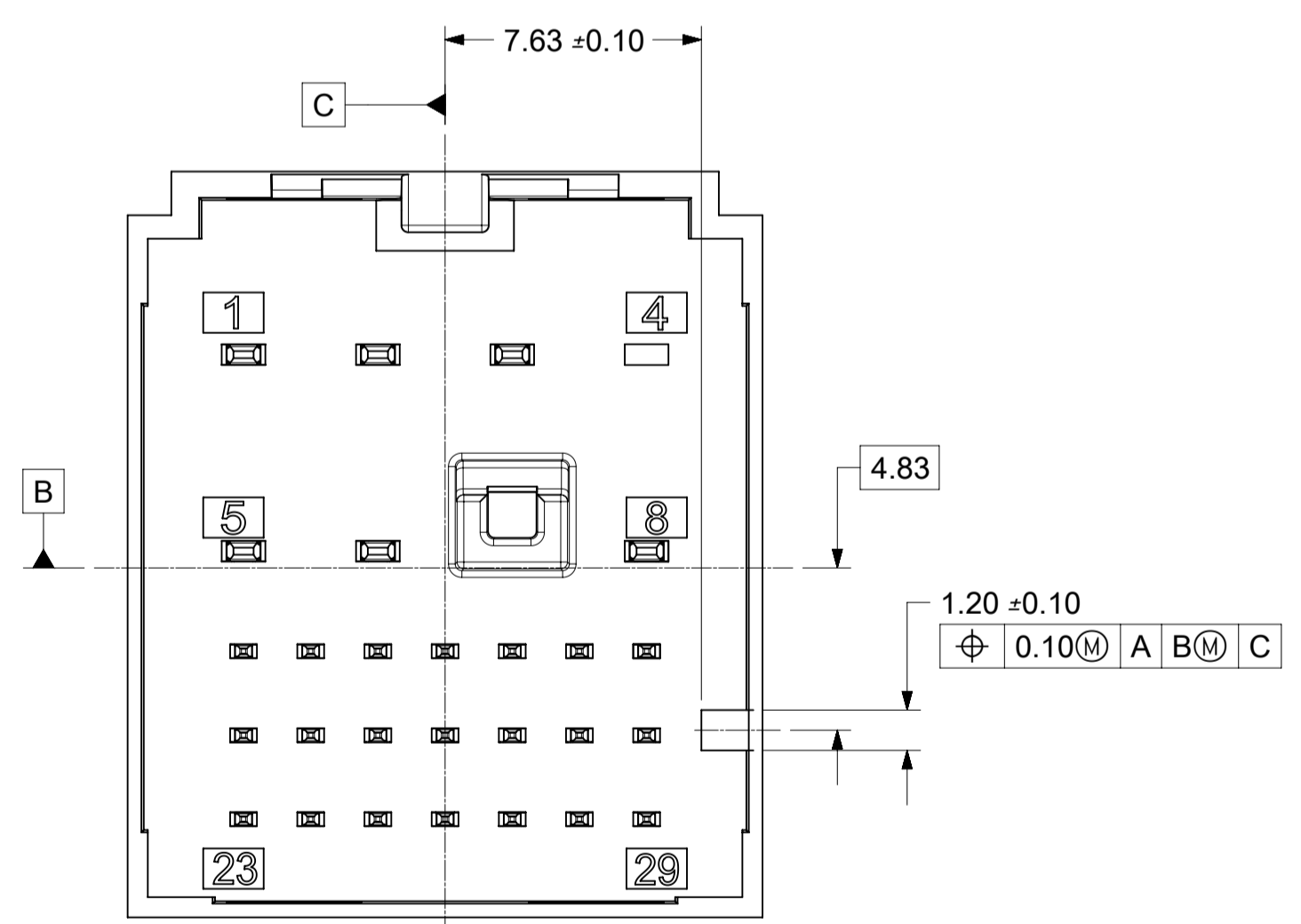
RELEASE STATUS	RELEASE DATE
----------------	--------------



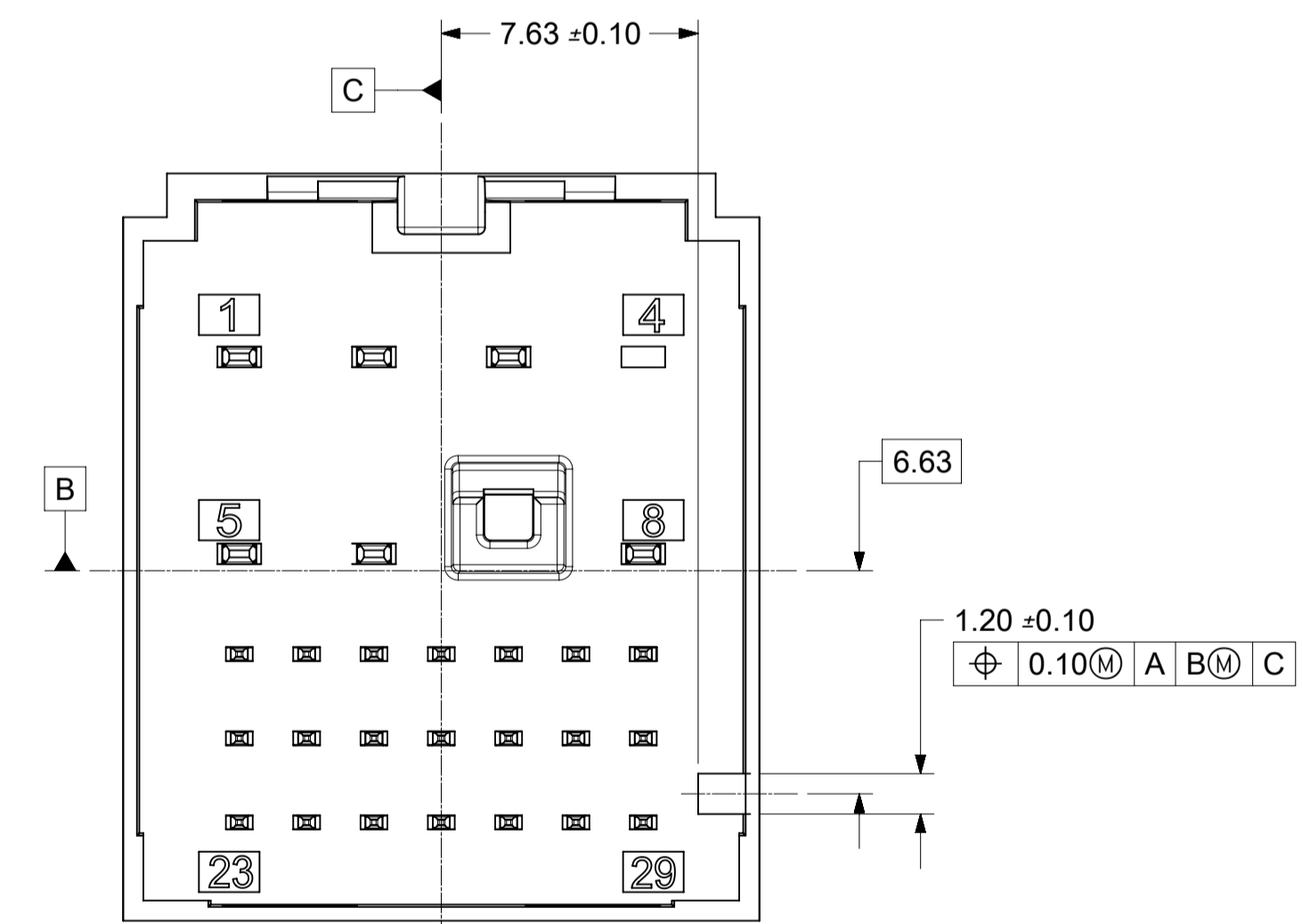
INTERFACE KEY #1  
MATING CONNECTOR COLOR; DARK GRAY



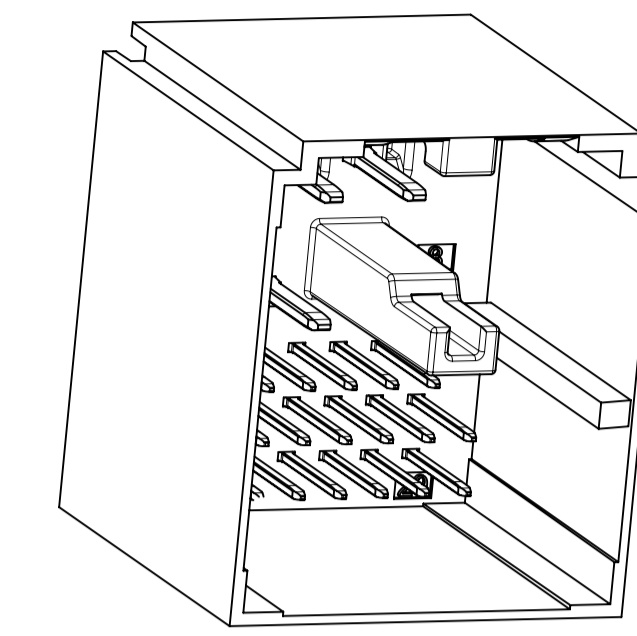
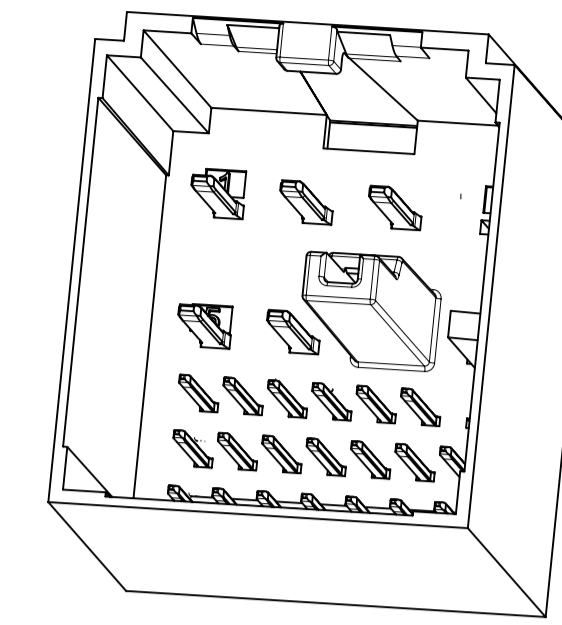
INTERFACE KEY #2  
MATING CONNECTOR COLOR; LT GREEN A



INTERFACE KEY #3  
MATING CONNECTOR COLOR; LIGHT GRAY



INTERFACE KEY #4  
MATING CONNECTOR COLOR; BLACK

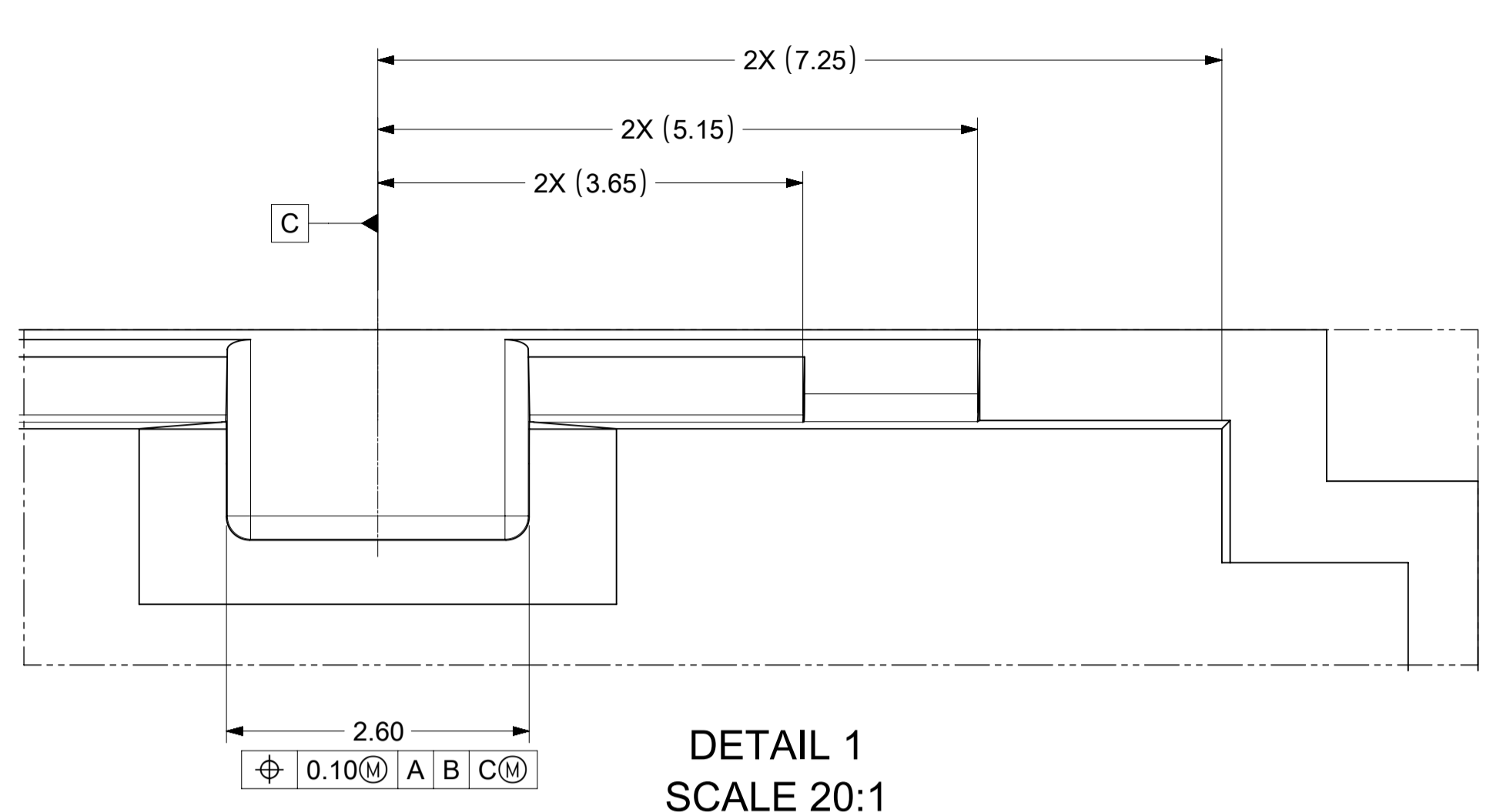


NOTES: VALID UNLESS OTHERWISE SPECIFIED

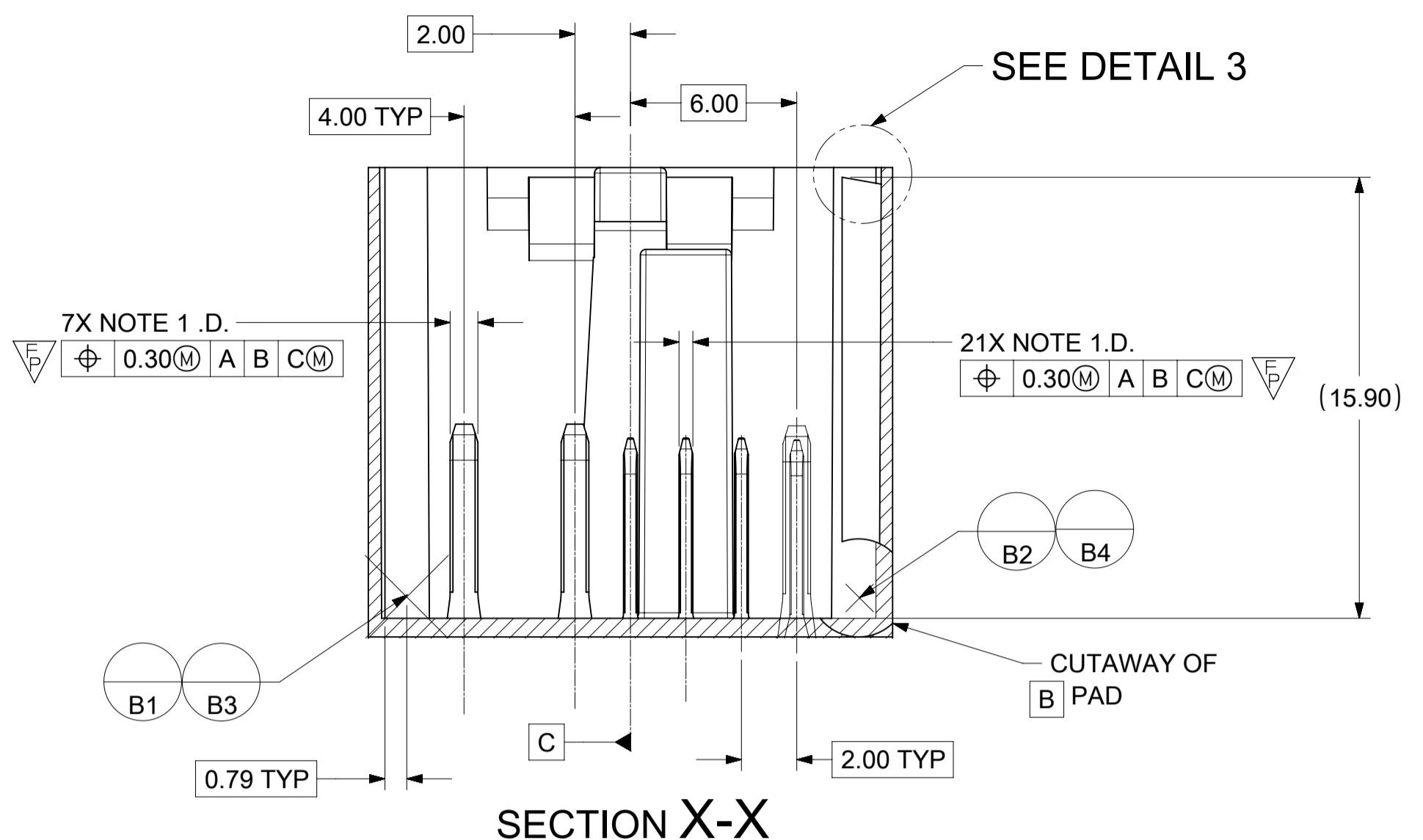
1. DESIGN - MATERIALS:
  - a. RESIN MATERIAL: PBT+GF30 OR SPS+GF30 OR EQUIVALENT
  - b. PIN/BLADE MATERIAL: ACCORDING TO USCAR DRAWING EWCAP-001 NOTE B2.
  - c. PLATING: ACCORDING TO USCAR DRAWING EWCAP-001 TIN REFLOW WITH UNDERPLATE.
  - d. PIN GEOMETRY ACCORDING TO USCAR DRAWING EWCAP-001 (120-T002 & 050-T001)
2. DESIGN - GEOMETRY:
  - a. ALL GRAPHIC DATA IS BASIC (NO TOLERANCE) AND MUST BE TAKEN FROM THE DATA FILE AT ITS LATEST REVISION.
  - b. PRODUCT DESIGN MODEL NUMBER(S): SEE BOM TABLE
  - c. GEOMETRIC DIMENSIONS AND TOLERANCES PER ASME Y14.5M-2009
  - d. GENERAL TOLERANCES:
    - LINEAR: PER DIN 16901 LINEAR CODE B FOR PRECISION ENGINEERING
    - ANGULAR: ± 3°
  - e. EDGES AND UNDIMENSIONED DETAILS PER ISO13715
  - f. CORNERS SHOWN AS SHARP TO BE R 0.2 MAX.
  - g. CIRCUIT LOCATION #7 VOIDED FOR 28WAY INTERFACE
3. DESIGN - MANUFACTURING:
  - a. DRAFT TO BE WITHIN TOLERANCE.

A2	NX-REMASTERING SAP # 10867412
A1	UAU2016-1133 SAP # 10762453 JCONDON 02/02/2016
A	UAU2015-1973 SAP # 10701371 JCONDON 06/30/2015
6	UAU2015-1446 SAP # 10681629 JCONDON 03/25/2015
5	UAU2015-1212 SAP # 10674908 JCONDON 02/06/2015
4	UAU2015-0634 SAP # 10661788 JCONDON 10/22/2014
3	UAU2014-1679 SAP # XXXXXXXX BSCUDDER 04/28/2014
2	UAU2014-1221 SAP # XXXXXXXX MYOUNG01 01/21/2014
1	UAU2014-0715 SAP # XXXXXXXX MYOUNG01 11/14/2013
REV	DESCRIPTION

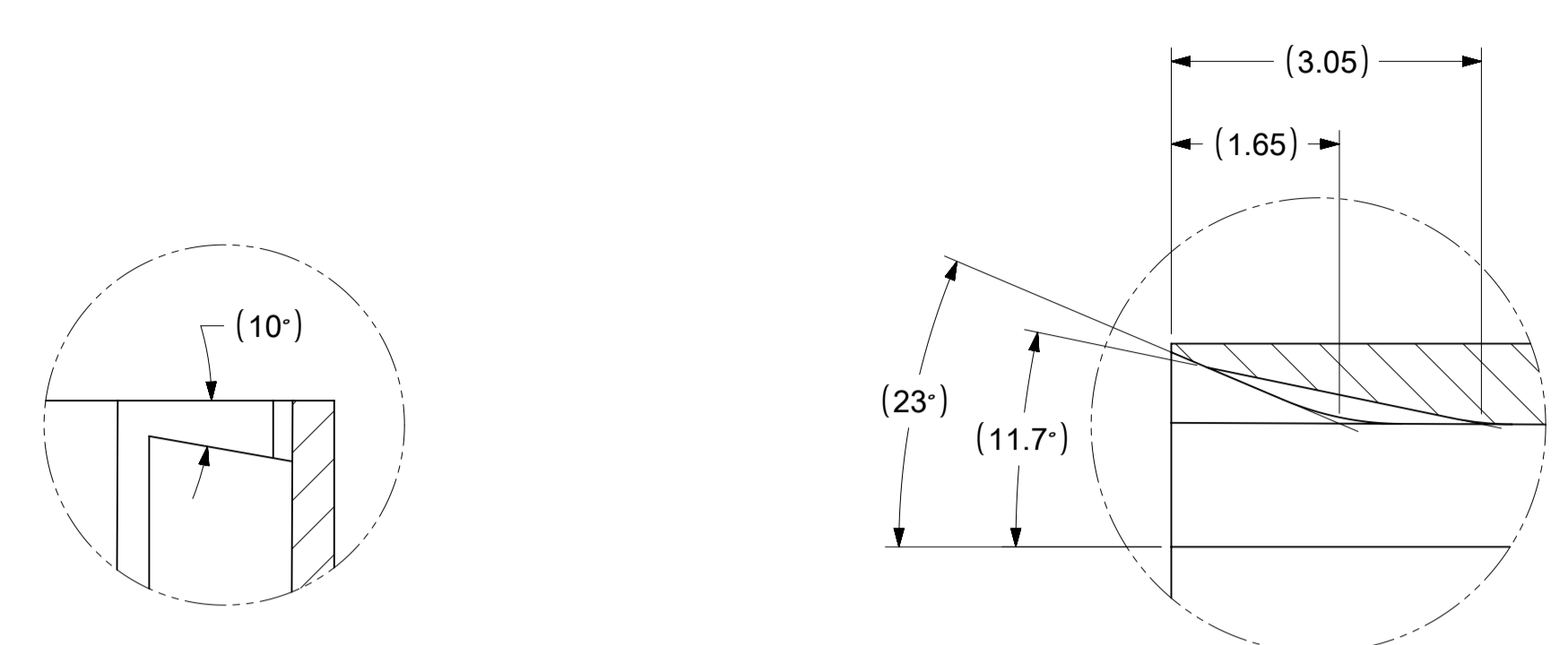
THIS DRAWING CONTAINS INFORMATION THAT IS PROPRIETARY TO MOLEX ELECTRONIC TECHNOLOGIES, LLC AND SHOULD NOT BE USED WITHOUT WRITTEN PERMISSION											
QUALITY SYMBOLS	EC NO: 167106 DRWN: VYARAPPA CHKD: JCONDON APPR: JCONDON	2017/09/14	2017/10/25	GENERAL TOLERANCES (UNLESS SPECIFIED)	DIMENSION UNITS	SCALE					
					MM ONLY	5:1					
F = 0 E = 0 E = 6 ▽ = 0 C = 0 ⊠ = 0 ■ = 0 ▽ = 0				ANGULAR TOL ± °	DRWN BY	DATE	28WAY STAK50H INTERFACE DRAWING				
				4 PLACES ±	MYOUNG01	2013/11/14					
				3 PLACES ±	CHK'D BY	DATE	PRODUCT CUSTOMER DRAWING				
				2 PLACES ±	JCONDON	2013/12/04					
				1 PLACE ±	APPR BY	DATE	SERIES: 160014 MATERIAL NUMBER: N/A CUSTOMER: GENERAL MARKET				
				0 PLACES ±	KDEKOSKI	2014/01/02					
				DRAFT WHERE APPLICABLE MUST REMAIN WITHIN DIMENSIONS	DRAWING SIZE	THIRD ANGLE PROJECTION	DOCUMENT NUMBER: SD-160014-002 DOC TYPE: PSD DOC PART: 001 SHEET NUMBER: 1 OF 3				
					A1						



DETAIL 1  
SCALE 20:1

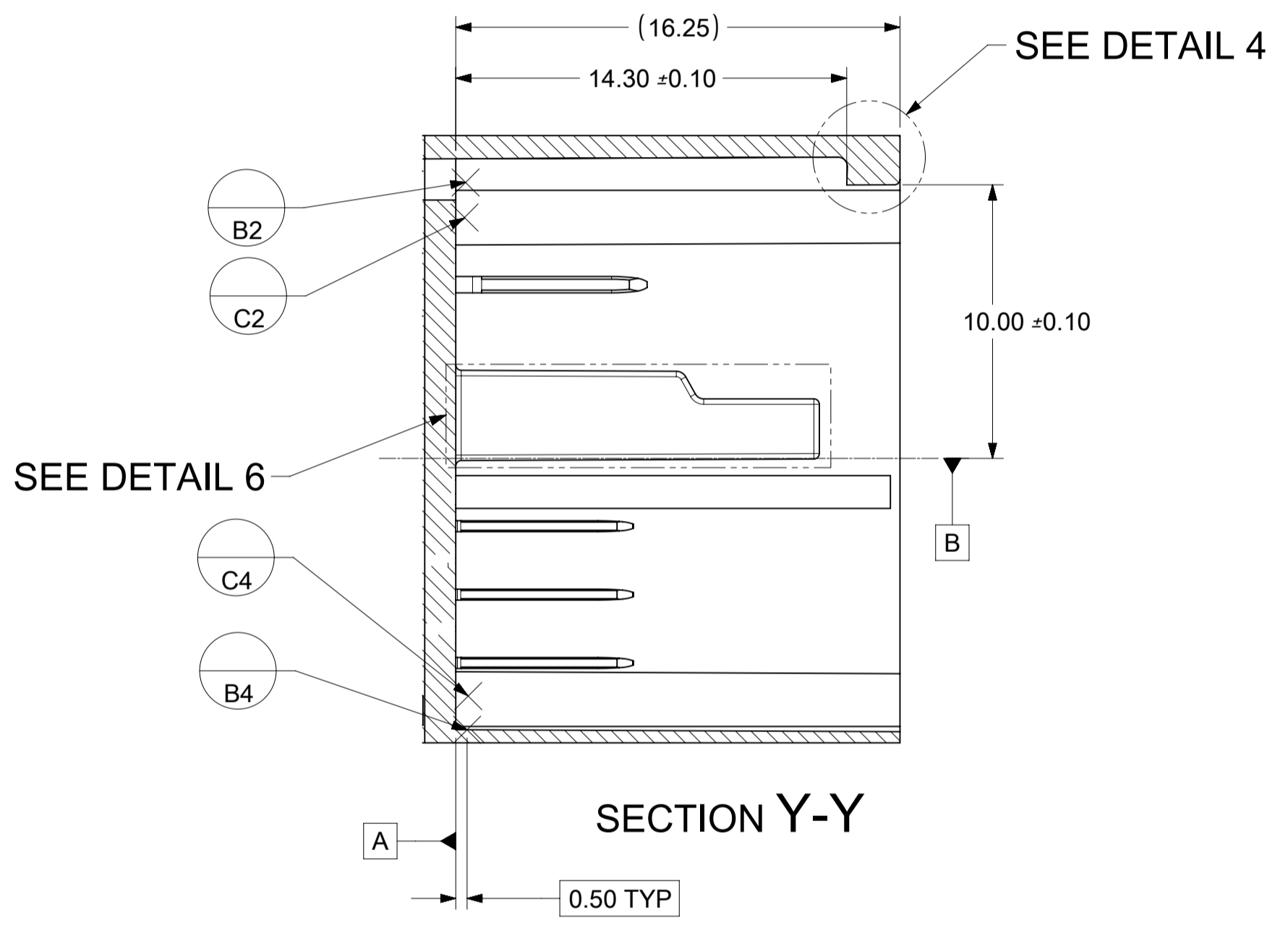


SECTION X-X

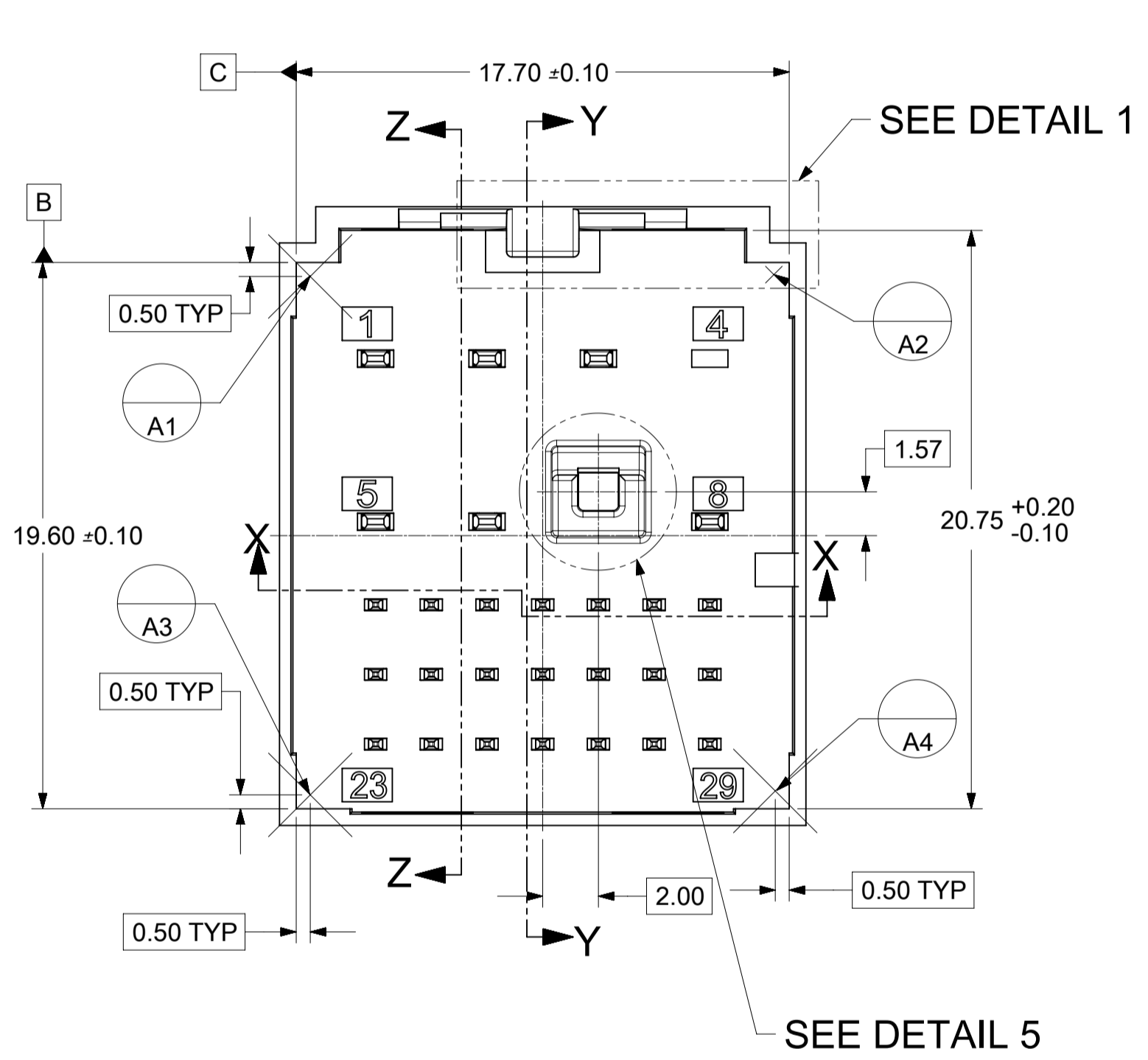


DETAIL 3  
SCALE 15:1

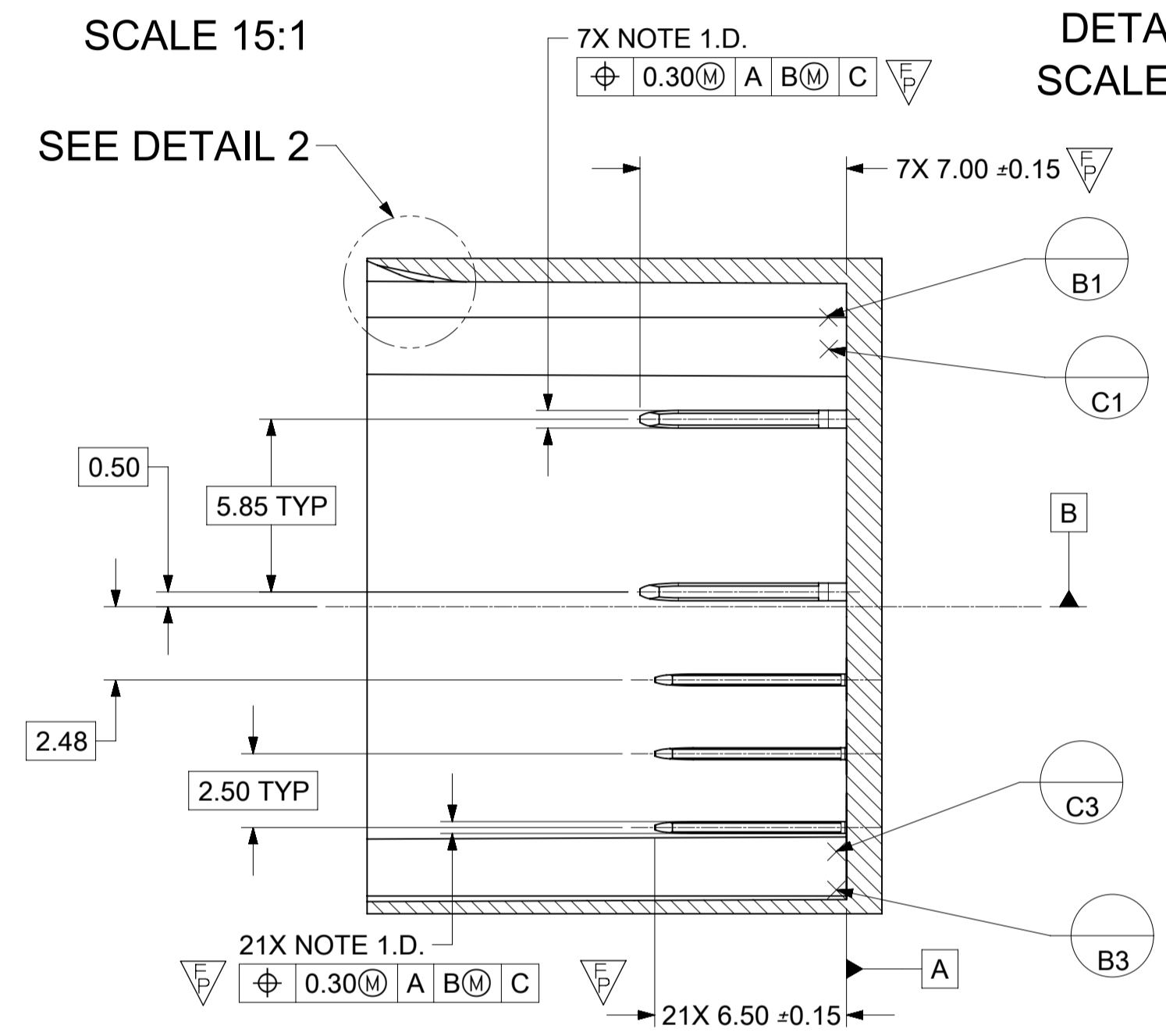
DETAIL 2  
SCALE 15:1



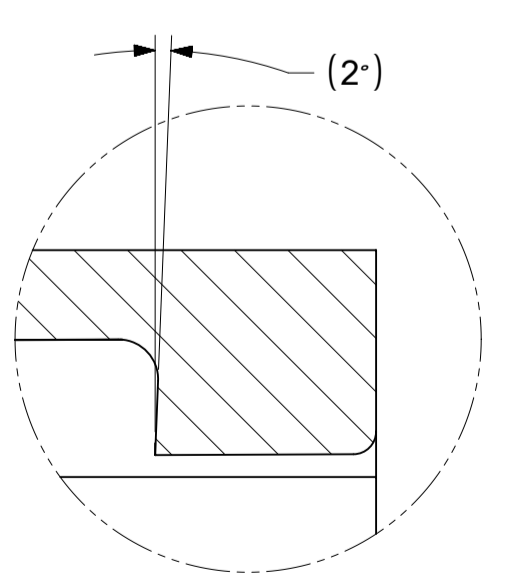
SECTION Y-Y



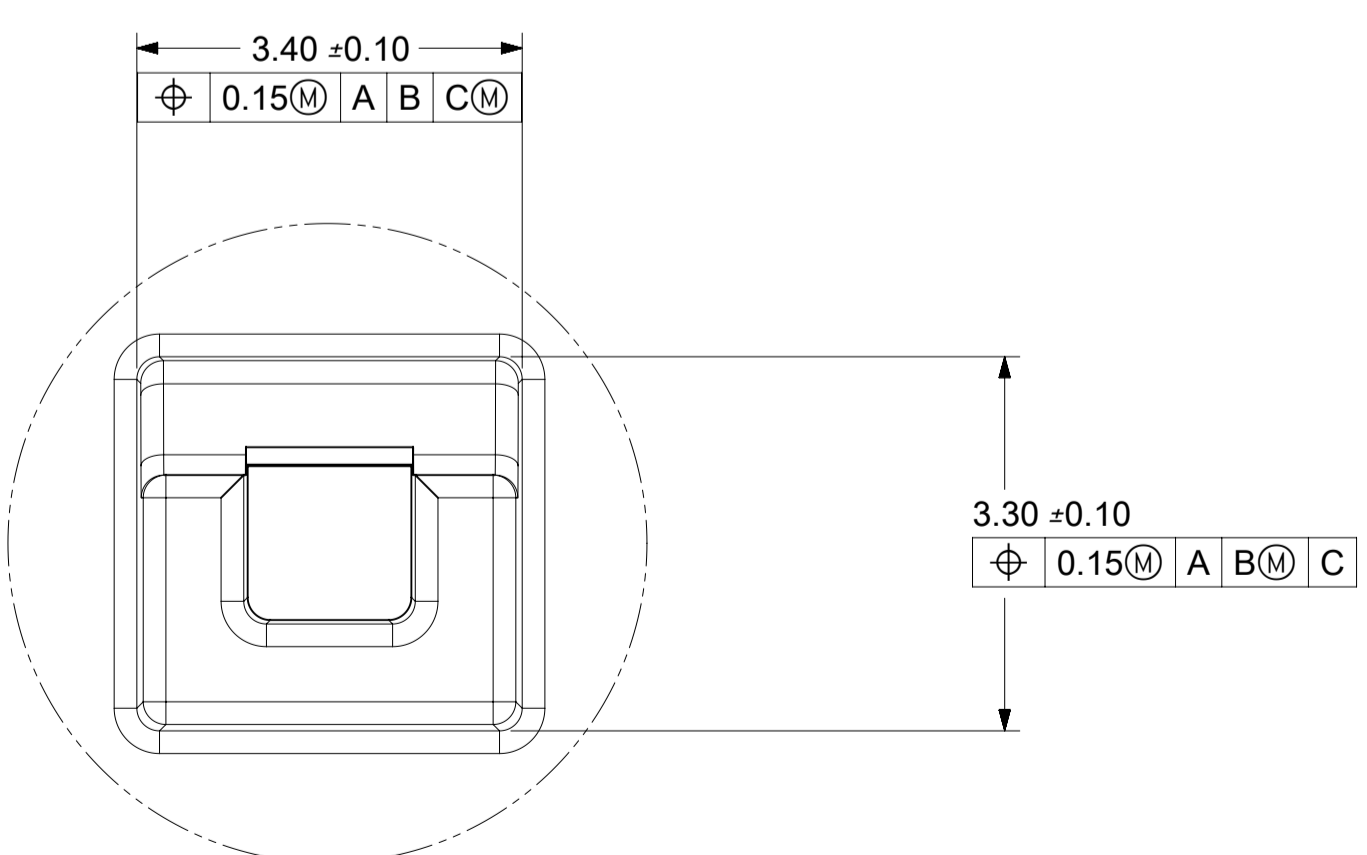
SECTION Z-Z



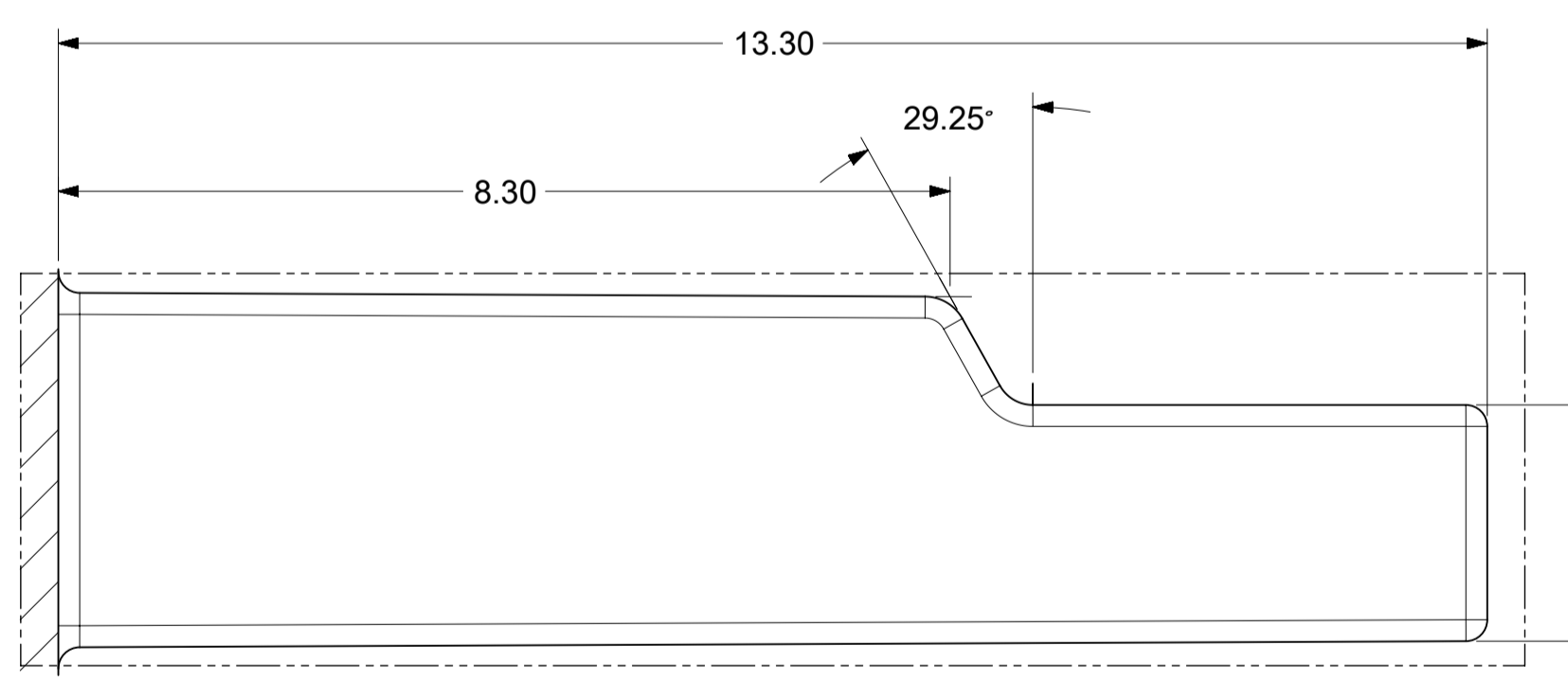
SECTION Z-Z



DETAIL 4  
SCALE 15:1

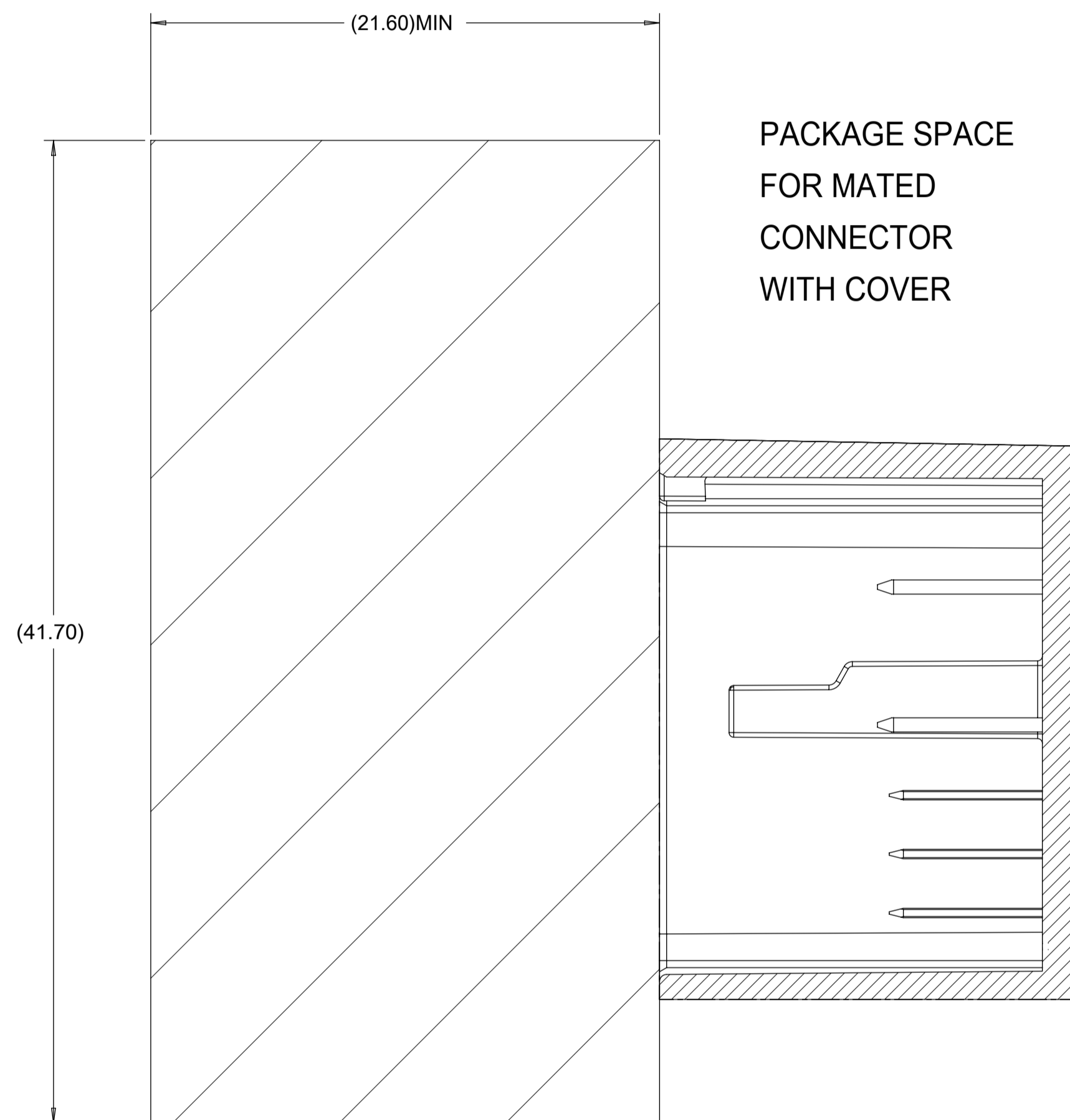
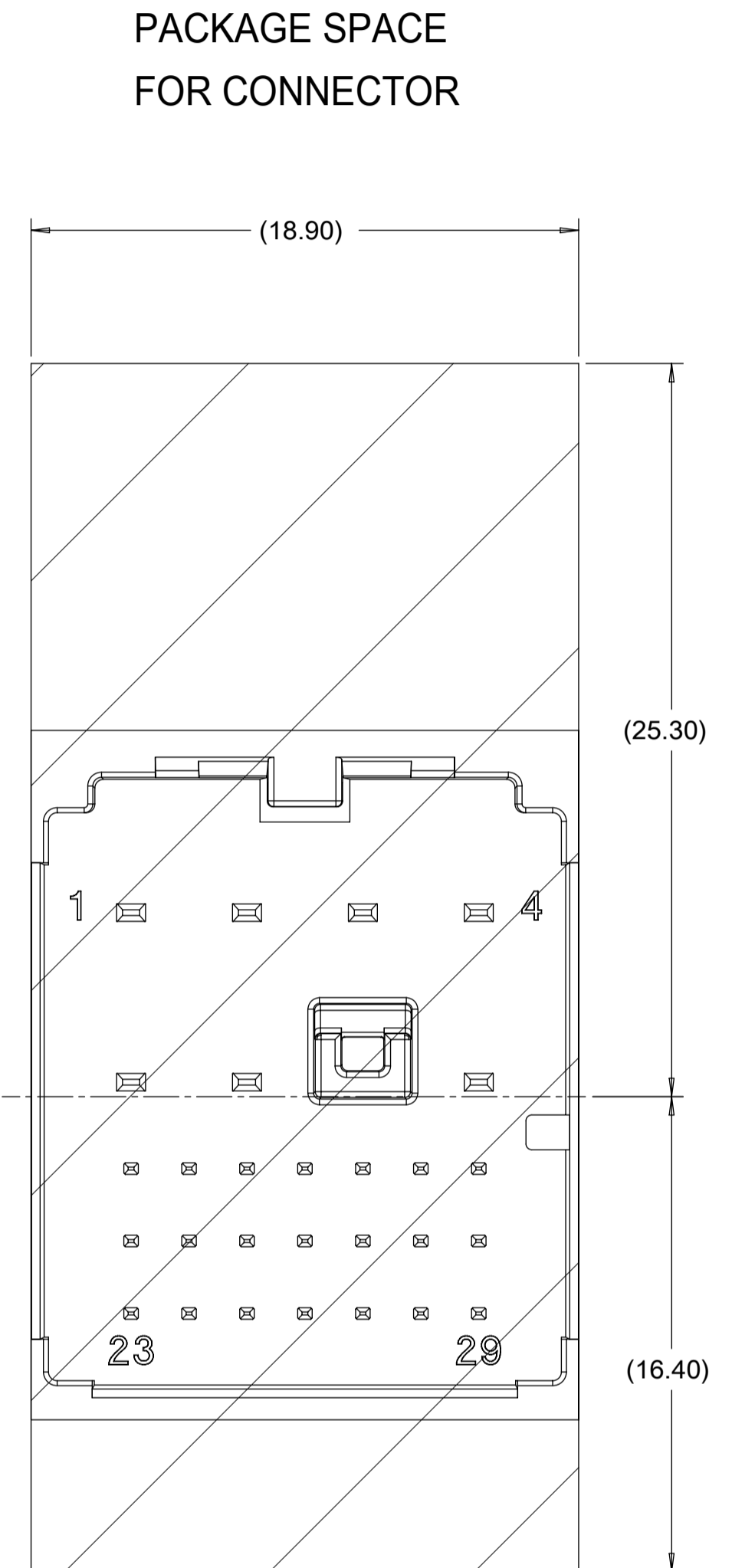
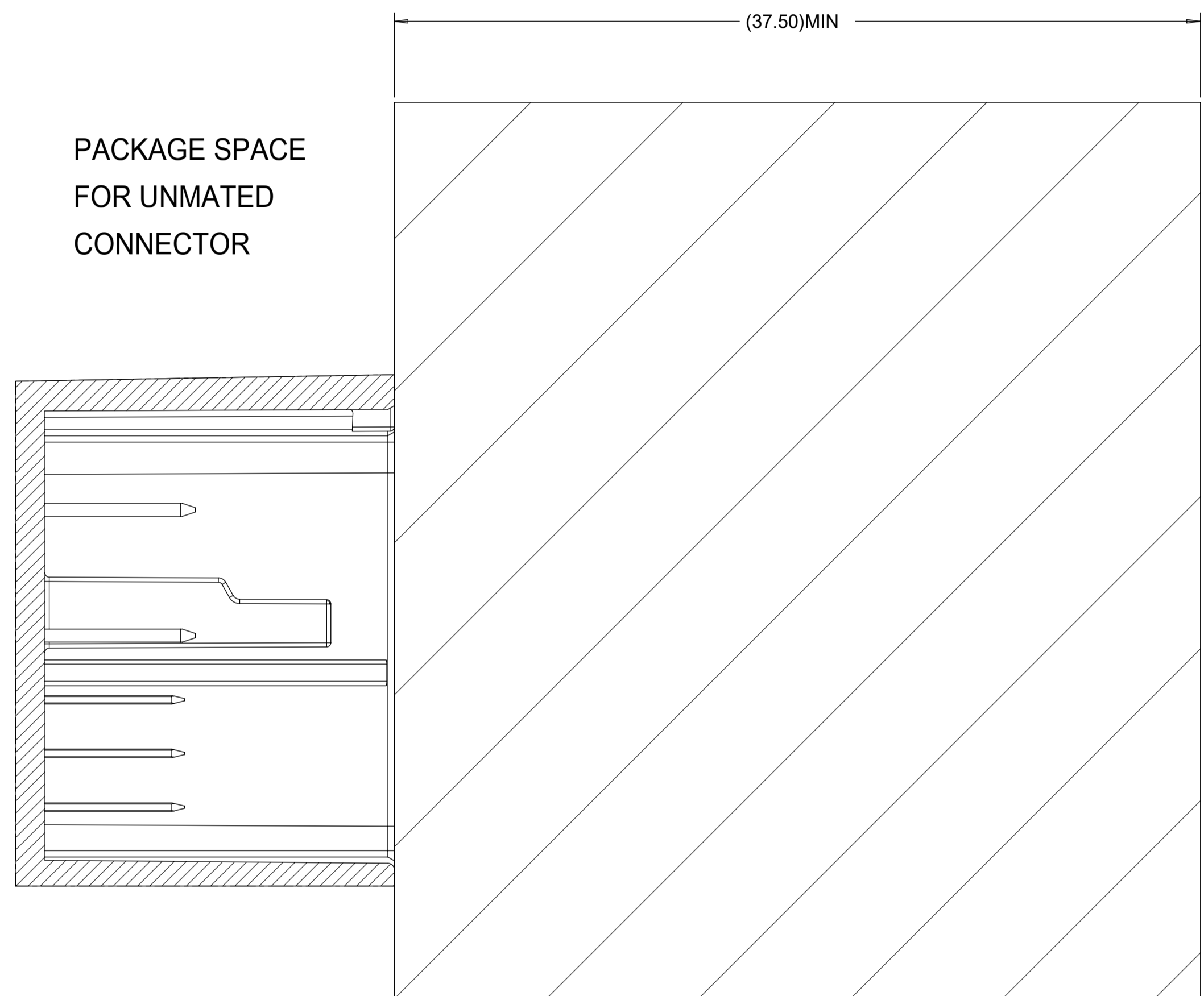


DETAIL 5  
SCALE 15:1



DETAIL 6  
SCALE 15:1

THIS DRAWING CONTAINS INFORMATION THAT IS PROPRIETARY TO MOLEX ELECTRONIC TECHNOLOGIES, LLC AND SHOULD NOT BE USED WITHOUT WRITTEN PERMISSION											
QUALITY SYMBOLS	2017/09/14	2017/10/25	GENERAL TOLERANCES (UNLESS SPECIFIED)		DIMENSION UNITS	SCALE					
			MM ONLY		5:1						
FA = 0	167108 DRWN: VYARAPPA CHKD: JCONDON REV APPR: JCONDON	2017/09/14	ANGULAR TOL ± °		DRWN BY	DATE	<b>28WAY STAK50H INTERFACE DRAWING</b>				
FE = 0			4 PLACES ±		MYOUNG01	2013/11/14					
FF = 0			3 PLACES ±		CHK'D BY	DATE					
FD = 0			2 PLACES ±		JCONDON	2013/12/04					
FC = 0			1 PLACE ±		APPR BY	DATE					
FD = 0			0 PLACES ±		KDEKOSKI	2014/01/02					
FA = 0	DRAFT WHERE APPLICABLE MUST REMAIN WITHIN DIMENSIONS		DRAWING SIZE	THIRD ANGLE PROJECTION	SERIES		MATERIAL NUMBER	CUSTOMER			
FA = 0	A1		A1		160014	N/A	GENERAL MARKET				
RELEASE STATUS		P1	RELEASE DATE	25.10.2017	14:57:56	DOCUMENT NUMBER	DOC TYPE	DOC PART	SHEET NUMBER		
A2						SD-160014-002	PSD	001	2 OF 3		



THIS DRAWING CONTAINS INFORMATION THAT IS PROPRIETARY TO MOLEX ELECTRONIC TECHNOLOGIES, LLC AND SHOULD NOT BE USED WITHOUT WRITTEN PERMISSION											
QUALITY SYMBOLS	EC NO: 167108 DRWN: VYARAPPA CHKD: JCONDON REV: APPR: JCONDON	GENERAL TOLERANCES (UNLESS SPECIFIED)		DIMENSION UNITS	SCALE						
		ANGULAR TOL ± °		MM ONLY	5:1						
FA = 0	<b>SEE NOTES</b>	4 PLACES ±	DRWN BY	DATE	<b>28WAY STAK50H INTERFACE DRAWING</b>						
FE = 0		3 PLACES ±	MYOUNG01	2013/11/14							
FF = 0		2 PLACES ±	CHK'D BY	DATE	<b>PRODUCT CUSTOMER DRAWING</b>						
FD = 0		1 PLACE ±	JCONDON	2013/12/04							
FC = 0		0 PLACES ±	APPR BY	DATE	SERIES: 160014 MATERIAL NUMBER: N/A CUSTOMER: GENERAL MARKET DOCUMENT NUMBER: SD-160014-002 DOC TYPE: PSD DOC PART: 001 SHEET NUMBER: 3 OF 3						
FCD = 0		DRAFT WHERE APPLICABLE MUST REMAIN WITHIN DIMENSIONS	KDEKOSKI	2014/01/02							
FCE = 0		DRAWING SIZE	THIRD ANGLE PROJECTION								
FCD = 0		A1									