

BODY, REAR: ZINC ALLOY  
PLATED TIN (100 MICROINCHES)

BODY, FRONT: BRASS  
PLATED NICKEL (100 MICROINCHES)

CENTER CONTACT: PHOSPHOR BRONZE  
PLATED GOLD (30 MICROINCHES MIN)

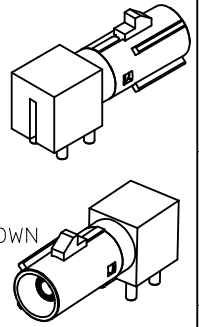
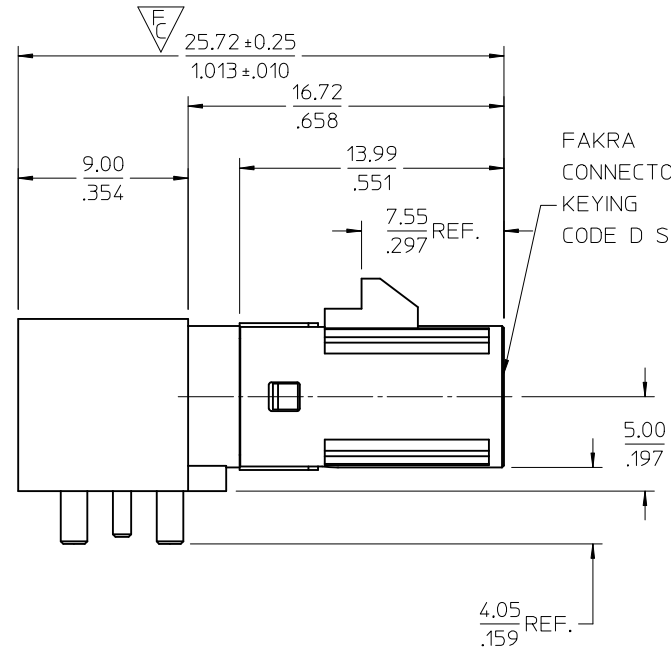
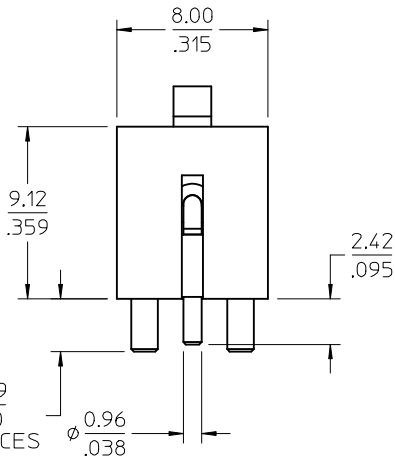
OUTER CASING: HIGH TEMPERATURE PLASTIC  
KEYING: SEE TABLE  
COLOR: SEE TABLE

INSULATOR: TEFLON

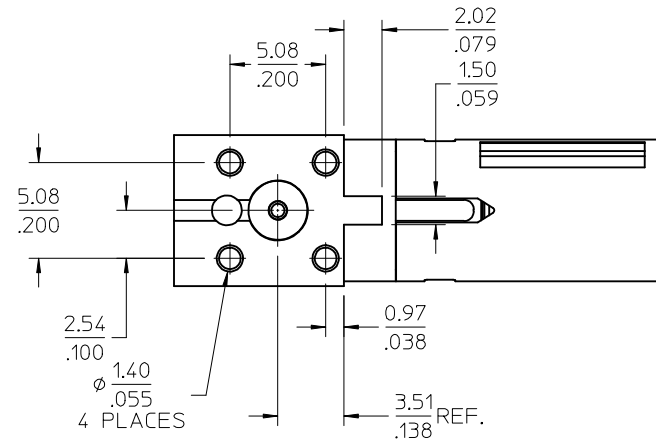
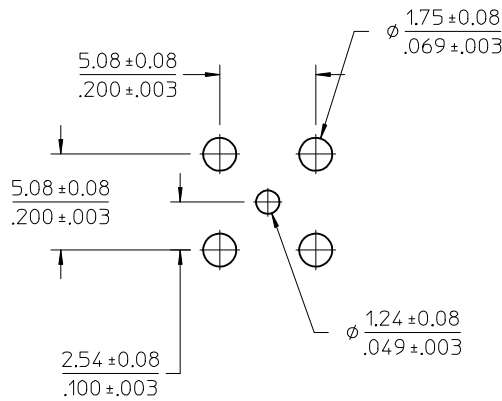
PACKAGING: TRAY

RETENTION SPECIFICATION:

THE FAKRA CONNECTOR SHROUD WILL WITHSTAND 4 PLACES  
A LONGITUDINAL FORCE OF 110 N (24.75 LBS)

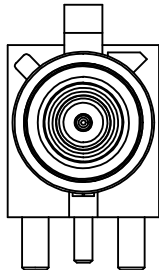


FAKRA CONNECTOR  
KEYING  
CODE D SHOWN

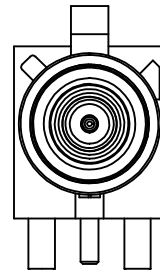


PS-89675-3310	PRODUCT SPEC.
MIL-STD-348A, FIG. 311.1	INTERFACE
SPECIFICATION	DESCRIPTION

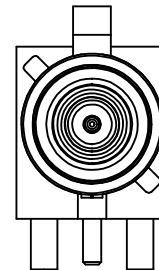
<b>ADDED CRITICAL DIM. PER RF16-E110</b> EC NO: URF2017-0019 DRW: INELIN 2016/07/11 CHKD: APPR: YCHENG 2016/07/14 REV: B3	QUALITY SYMBOLS ∇=0 ∇=1 ∇=0	GENERAL TOLERANCES (UNLESS SPECIFIED) <table border="1"> <tr> <th></th> <th>mm</th> <th>INCH</th> </tr> <tr> <td>4 PLACES</td> <td>± .10</td> <td>± .004</td> </tr> <tr> <td>3 PLACES</td> <td>± .125</td> <td>± .005</td> </tr> <tr> <td>2 PLACES</td> <td>± .150</td> <td>± .006</td> </tr> <tr> <td>1 PLACE</td> <td>± .175</td> <td>± .007</td> </tr> <tr> <td>0 PLACE</td> <td>± .200</td> <td>± .008</td> </tr> </table>		mm	INCH	4 PLACES	± .10	± .004	3 PLACES	± .125	± .005	2 PLACES	± .150	± .006	1 PLACE	± .175	± .007	0 PLACE	± .200	± .008	DIMENSION STYLE <b>MM/IN</b> DRAWN BY: EL IN DATE: 2012/02/02 CHECKED BY: KERRIE DATE: 2012/02/02 APPROVED BY: MHUANG DATE: 2012/02/07	SCALE: 5:1 DESIGN UNITS: METRIC THIRD ANGLE PROJECTION	TITLE: SMB JACK, FAKRA,R/A, PCB 50 OHMS SMB-J/PCB <b>molex</b>	MATERIAL NO.: SEE SHEET 1 DOCUMENT NO.: SD-73404-081 SHEET NO.: 1 OF 2
		mm	INCH																					
	4 PLACES	± .10	± .004																					
	3 PLACES	± .125	± .005																					
2 PLACES	± .150	± .006																						
1 PLACE	± .175	± .007																						
0 PLACE	± .200	± .008																						
ANGULAR ± 2° DRAFT WHERE APPLICABLE MUST REMAIN WITHIN DIMENSIONS		THIS DRAWING CONTAINS INFORMATION THAT IS PROPRIETARY TO MOLEX INCORPORATED AND SHOULD NOT BE USED WITHOUT WRITTEN PERMISSION																						



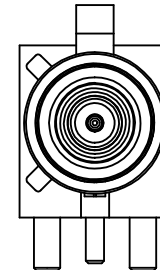
CODE A



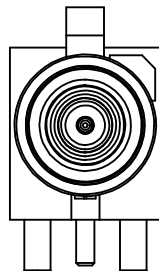
CODE B



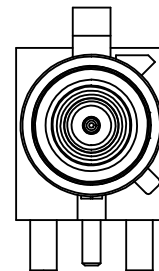
CODE C



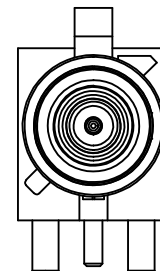
CODE D



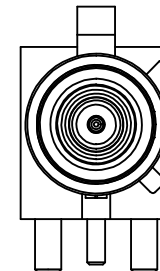
CODE E



CODE F

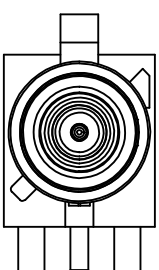


CODE G

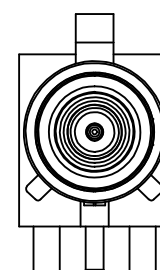


CODE H

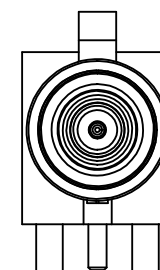
N	PASTEL GREEN	73404-0823
M	PASTEL ORANGE	73404-0822
L	CARMINE RED	73404-0821
Z	WATER BLUE	73404-0820
K	CURRY YELLOW	73404-0819
I	BEIGE	73404-0818
H	VIOLET	73404-0817
G	GRAY	73404-0816
F	BROWN	73404-0815
E	GREEN	73404-0814
D	BORDEAUXVIOLET	73404-0813
C	BLUE	73404-0812
B	SIGNAL WHITE	73404-0811
A	BLACK	73404-0810
KEYING CODE	COLOR	PART NO.



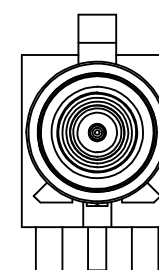
CODE I



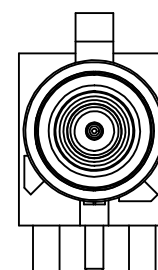
CODE K



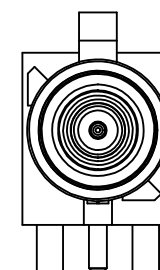
CODE Z



CODE L

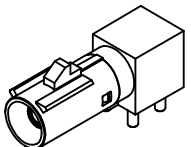


CODE M

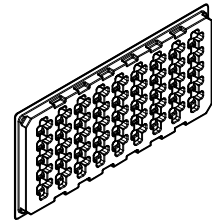


CODE N

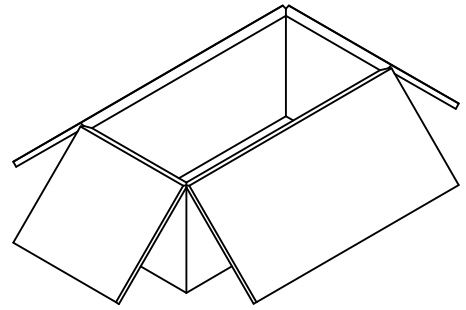
SEE SHEET 1 EC NO: URF2017-0019 DRW:INELIN 2016/07/11 CHKD: APPR:YCHENG 2016/07/14 REV: B3	QUALITY SYMBOLS ▽=0 ▽=0 ▽=0	GENERAL TOLERANCES (UNLESS SPECIFIED) <table border="1"> <tr> <td></td> <td>mm</td> <td>INCH</td> </tr> <tr> <td>4 PLACES</td> <td>± .005</td> <td>± .0004</td> </tr> <tr> <td>3 PLACES</td> <td>± .008</td> <td>± .0003</td> </tr> <tr> <td>2 PLACES</td> <td>± 0.025</td> <td>± .0010</td> </tr> <tr> <td>1 PLACE</td> <td>± .050</td> <td>± .0020</td> </tr> <tr> <td>0 PLACE</td> <td>± .125</td> <td>± .0050</td> </tr> </table>		mm	INCH	4 PLACES	± .005	± .0004	3 PLACES	± .008	± .0003	2 PLACES	± 0.025	± .0010	1 PLACE	± .050	± .0020	0 PLACE	± .125	± .0050	DIMENSION STYLE MM/IN DRAWN BY DATE EL IN 2012/02/02 CHECKED BY DATE KERRIE 2012/02/02 APPROVED BY DATE MHUANG 2012/02/07	SCALE 5:1 DESIGN UNITS METRIC THIRD ANGLE PROJECTION	TITLE SMB JACK, FAKRA,R/A, PCB 50 OHMS SMB-J/PCB <b>molex</b> DOCUMENT NO. SD-73404-081 SHEET NO. 2 OF 2
		mm	INCH																				
	4 PLACES	± .005	± .0004																				
	3 PLACES	± .008	± .0003																				
2 PLACES	± 0.025	± .0010																					
1 PLACE	± .050	± .0020																					
0 PLACE	± .125	± .0050																					
DRAFT WHERE APPLICABLE MUST REMAIN WITHIN DIMENSIONS		MATERIAL NO. SEE TABLE	THIS DRAWING CONTAINS INFORMATION THAT IS PROPRIETARY TO MOLEX INCORPORATED AND SHOULD NOT BE USED WITHOUT WRITTEN PERMISSION																				



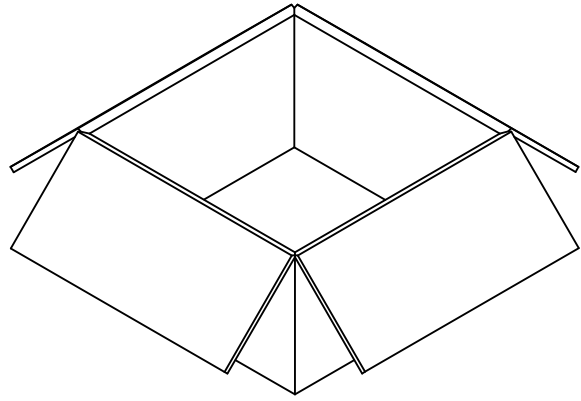
P/N 73404-081X



45 SET PER TRAY  
TRAY P/N 89707-0253



720 SET PER INNER  
CARTON BOX  
P/N 96707-0001



1440 SET PER OUTER  
CARTON BOX  
P/N 96708-0005

RF10-E059 EC NO: URF2010-0220 DRWNLIN 2009/11/03 CHKD: 2009/11/04 APPR:MHUANG 2009/11/05	DESCRIPTION REV A	QUALITY SYMBOLS ▽=0 ▽=0	GENERAL TOLERANCES (UNLESS SPECIFIED)		DIMENSION STYLE MM/IN		SCALE	DESIGN UNITS METRIC	THIRD ANGLE PROJECTION			
				4 PLACES ± --- ± --- 3 PLACES ± --- ± --- 2 PLACES ± --- ± --- 1 PLACE ± --- ± ---	DRAWN BY DATE EVITA 2009/10/30		TITLE PACKAGING FOR 73404-081					
				ANGULAR ± 2 °	CHECKED BY DATE ALEX 2009/10/30		MOLEX INCORPORATED					
				DRAFT WHERE APPLICABLE MUST REMAIN WITHIN DIMENSIONS	APPROVED BY DATE MISEN 2009/10/30		MATERIAL NO. -----		DOCUMENT NO. SD-73404-081-PKG		SHEET NO. 1 OF 1	