

MATERIALS AND FINISHES

BODY: BRASS  
 PLATED: NICKEL (70μ-in MIN)

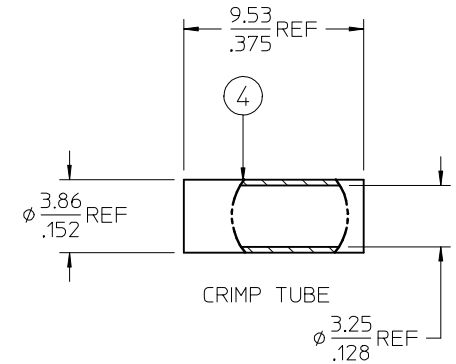
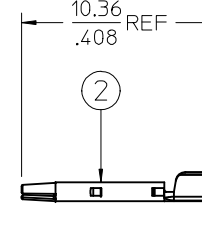
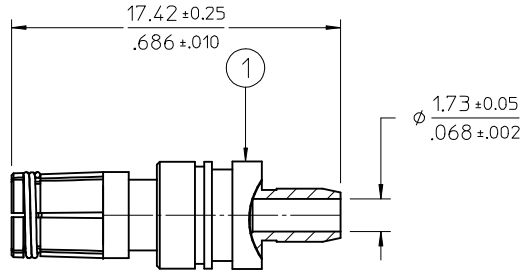
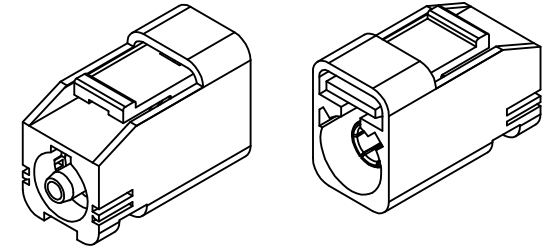
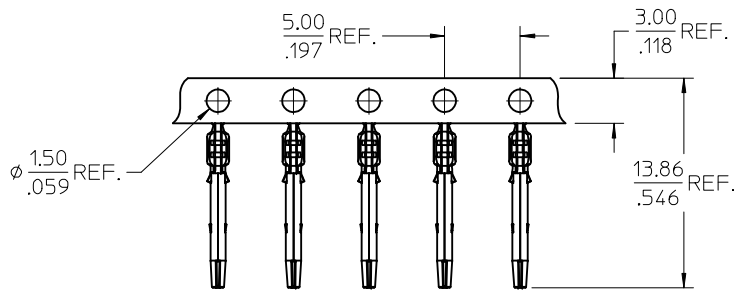
CENTER CONTACT: PHOSPOR BRONZE  
 PLATED: SELECTIVE GOLD (1μ-in MIN AT TIP)  
 PLATED: TIN (50μ-in MIN REST OF PART)

CRIMP TUBE: BRASS  
 PLATED: NICKEL (70μ-in MIN)

OUTER CASING: NYLON 66 OR EQUIVALENT  
 KEYING: SEE TABLE  
 COLOR: SEE TABLE

INSULATOR: POLYPROPYLENE

PACKAGING BY BAG



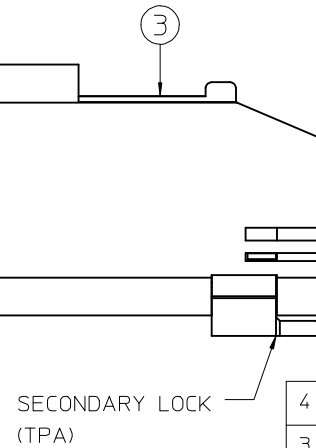
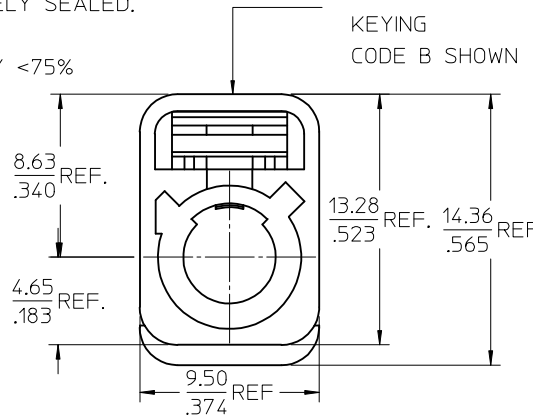
CONTACT

CRIMP TUBE

NOTE:

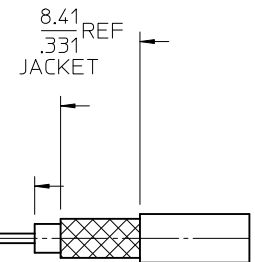
- 250 PCS (89618-43XX) PER ZIPLOCK BAG.  
 NOTICE: THE BAG MUST BE COMPLETELY SEALED.
- STORAGE CONDITIONS:  
 TEMPERATURE -10° TO 40°C HUMIDITY <75%

FAKRA  
 CONNECTOR  
 KEYING  
 CODE B SHOWN



SECONDARY LOCK  
 (TPA)

4.21 REF. (.166)  
 2.84 REF. (.112)  
 CENTER CONDUCTOR



8.41 REF. (.331)  
 JACKET

PART # SEE SHEET 2

PS-89675-331	PRODUCT SPECIFICATION
DIN 72594-1	INTERFACE SPECIFICATION
SPECIFICATION	DESCRIPTION

4	89674-0805	CRIMP TUBE	1
3	SEE SHEET 2	SHROUD WITH TPA	1
2	89538-0251	CENTER CONTACT	1
1	89618-4340	SMB PLUG STR. FOR RG316	1
	PART NO.	DESCRIPTION	QTY

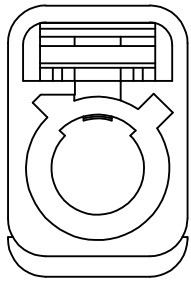
ADDED TOLERANCE PER RF17-E017	EC NO: URF2017-0283	2017/01/20
DRWN:ELIN	CHKD:YCHENG	2017/01/23
APPR:YCHENG	DESCRIPTION	
REV: C1		

QUALITY SYMBOLS	GENERAL TOLERANCES (UNLESS SPECIFIED)
▽=0	
▽=0	
	ANGULAR ± 2°
	DRAFT WHERE APPLICABLE MUST REMAIN WITHIN DIMENSIONS

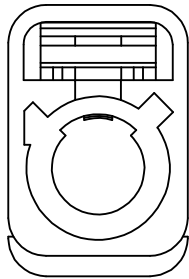
DIMENSION STYLE	SCALE	DESIGN UNITS	THIRD ANGLE PROJECTION
MM/IN		METRIC	
DRAWN BY	DATE	TITLE	
EL IN	2015/05/29	FAKRA II PLUG STR. FOR RG316/174 CABLE FAKRA II-PC	
CHECKED BY	DATE		
JOANNE	2015/05/29		
APPROVED BY	DATE		
YCHENG	2015/08/26		
MATERIAL NO.	DOCUMENT NO.		SHEET NO.
SEE SHT 2	SD-73403-692		1 OF 2
SIZE	THIS DRAWING CONTAINS INFORMATION THAT IS PROPRIETARY TO MOLEX INCORPORATED AND SHOULD NOT BE USED WITHOUT WRITTEN PERMISSION		

MOLEX	MOLEX INCORPORATED
-------	--------------------

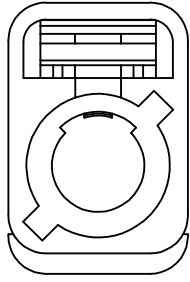
N	PASTEL GREEN	73403-6933	89618-4363
M	PASTEL ORANGE	73403-6932	89618-4362
L	CARMINE RED	73403-6931	89618-4361
Z	WATER BLUE	73403-6930	89618-4360
K	CURRY YELLOW	73403-6929	89618-4359
I	BEIGE	73403-6928	89618-4358
H	VIOLET	73403-6927	89618-4357
G	GRAY	73403-6926	89618-4356
F	BROWN	73403-6925	89618-4355
E	GREEN	73403-6924	89618-4354
D	BORDEAUXVIOLET	73403-6923	89618-4353
C	BLUE	73403-6922	89618-4352
B	CREAM WHITE	73403-6921	89618-4351
A	BLACK	73403-6920	89618-4350
KEYING CODE	COLOR	PART NO.	ITEM 3 PART NO.



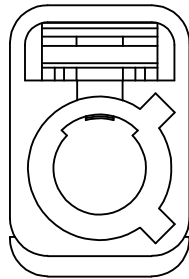
CODE A



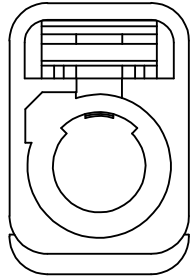
CODE B



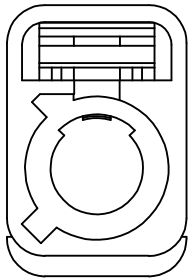
CODE C



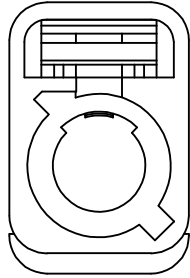
CODE D



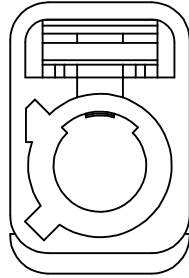
CODE E



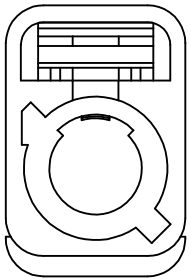
CODE F



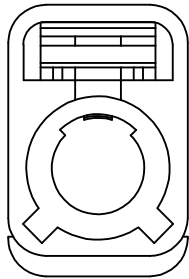
CODE G



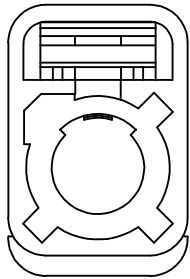
CODE H



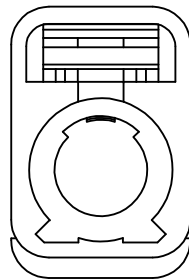
CODE I



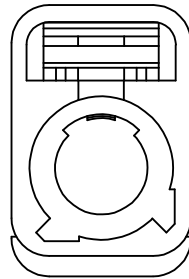
CODE K



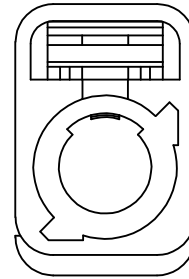
CODE Z



CODE L



CODE M



CODE N

<b>SEE SHEET 1</b> EC NO: URF2017-0283 DRWNLIN 2017/01/20 CHKD: APPR: YCHENG 2017/01/23 DESCRIPTION	QUALITY SYMBOLS = 0 = 0	GENERAL TOLERANCES (UNLESS SPECIFIED) <table border="1"> <thead> <tr> <th></th> <th>mm</th> <th>INCH</th> </tr> </thead> <tbody> <tr> <td>4 PLACES</td> <td>± .---</td> <td>± .---</td> </tr> <tr> <td>3 PLACES</td> <td>± .---</td> <td>± .---</td> </tr> <tr> <td>2 PLACES</td> <td>± .---</td> <td>± .---</td> </tr> <tr> <td>1 PLACE</td> <td>± .---</td> <td>± .---</td> </tr> </tbody> </table>		mm	INCH	4 PLACES	± .---	± .---	3 PLACES	± .---	± .---	2 PLACES	± .---	± .---	1 PLACE	± .---	± .---	DIMENSION STYLE <b>MM/IN</b> DRAWN BY DATE EL IN 2015/05/29 CHECKED BY DATE JOANNE 2015/05/29 APPROVED BY DATE YCHENG 2015/08/26	SCALE DESIGN UNITS <b>METRIC</b> THIRD ANGLE PROJECTION	TITLE <b>FAKRA II PLUG STR. FOR RG316/174 CABLE FAKRA II-PC</b> <b>MOLEX INCORPORATED</b> MATERIAL NO. DOCUMENT NO. SHEET NO. <b>SEE TABLE SD-73403-692 2 OF 2</b>
		mm	INCH																	
	4 PLACES	± .---	± .---																	
	3 PLACES	± .---	± .---																	
2 PLACES	± .---	± .---																		
1 PLACE	± .---	± .---																		
DRAFT WHERE APPLICABLE MUST REMAIN WITHIN DIMENSIONS		DIMENSION STYLE <b>MM/IN</b>	TITLE <b>FAKRA II PLUG STR. FOR RG316/174 CABLE FAKRA II-PC</b>																	
DRAFT WHERE APPLICABLE MUST REMAIN WITHIN DIMENSIONS		DIMENSION STYLE <b>MM/IN</b>	TITLE <b>FAKRA II PLUG STR. FOR RG316/174 CABLE FAKRA II-PC</b>																	
DRAFT WHERE APPLICABLE MUST REMAIN WITHIN DIMENSIONS		DIMENSION STYLE <b>MM/IN</b>	TITLE <b>FAKRA II PLUG STR. FOR RG316/174 CABLE FAKRA II-PC</b>																	