

PLEASE CHECK WWW.MOLEX.COM FOR LATEST PART INFORMATION

Part Number: [2078430005](#)
Status: **Active**
Overview: [L1NK Connector System](#)
Description: L1NK 250 Header, Vertical, Fully Shrouded, Tin (Sn) Plating, 5 Circuits, with Peg

Documents:

3D Model	Product Specification 2079020001-PS-SK-000 (PDF)
3D Model (PDF)	Application Specification 2079020001-AS-000 (PDF)
Drawing (PDF)	Packaging Specification 2078430000-PK-000 (PDF)
Product Specification 2079020001-PS-000 (PDF)	Test Summary 2079020000-TS-000 (PDF)
Product Specification 2079020001-PS-CH-000 (PDF)	Datasheet (PDF)
Product Specification 2079020001-PS-ES-000 (PDF)	RoHS Certificate of Compliance (PDF)
Product Specification 2079020001-PS-JP-000 (PDF)	

Agency Certification

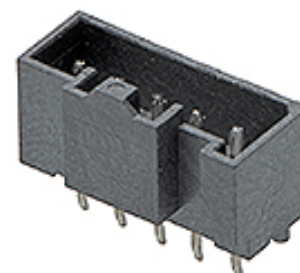
CSA 152514

General

Product Family PCB Headers
 Series [207843](#)
 Application Power, Wire-to-Board
 Overview [L1NK Connector System](#)
 Product Name L1NK 250
 UPC 191130123155

Physical

Breakaway No
 Circuits (Loaded) 5
 Circuits (maximum) 5
 Color - Resin Black
 Durability (mating cycles max) 25
 First Mate / Last Break No
 Flammability 94V-0
 Glow-Wire Capable Yes
 Guide to Mating Part No
 Keying to Mating Part None
 Lock to Mating Part Yes
 Material - Metal Brass
 Material - Plating Mating Tin
 Material - Plating Termination Tin
 Material - Resin Liquid Crystal Polymer
 Net Weight 0.509/g
 Number of Rows 1
 Orientation Vertical
 PC Tail Length 3.45mm
 PCB Locator No
 PCB Retention None
 PCB Thickness - Recommended 1.60mm
 Packaging Type Bag
 Pitch - Mating Interface 2.50mm
 Pitch - Termination Interface 2.50mm
 Polarized to Mating Part Yes
 Polarized to PCB Yes
 Shrouded Fully
 Stackable No
 Surface Mount Compatible (SMC) No
 Temperature Range - Operating -40° to +105°C



Series image - Reference only

EU ELV

Not Relevant

EU RoHS

Compliant

REACH SVHC

Not Contained Per -
 D(2020)4578-DC (25
 June 2020)

Halogen-Free

Status

Low-Halogen

For more information, please visit [Contact US](#)

China ROHS

ELV

RoHS Phthalates

China RoHS

Green Image

Not Relevant

Not Contained

Search Parts in this Series

[207843 Series](#)

Mates With

L1NK 250 Receptacle Housing [207841](#)

Termination Interface: Style

Through Hole

Electrical

Current - Maximum per Contact

6.5A

Voltage - Maximum

250V AC (RMS)/DC

Material Info

Reference - Drawing Numbers

Application Specification

2079020001-AS-000

Packaging Specification

2078430000-PK-000

Product Specification

2079020001-PS-000, 2079020001-PS-CH-000,
2079020001-PS-ES-000, 2079020001-PS-JP-000,
2079020001-PS-SK-000

Sales Drawing

2078430004-SD-000

Test Summary

2079020000-TS-000

This document was generated on 07/15/2020

PLEASE CHECK WWW.MOLEX.COM FOR LATEST PART INFORMATION