

# Plug-In Attenuator/Switch

50Ω Bi-Phase 5 to 450 MHz

PAS-1+  
PAS-1



CASE STYLE: A01  
PRICE: \$36.20 ea. QTY. (1-9)

+ RoHS compliant in accordance with EU Directive (2002/95/EC)

The +Suffix identifies RoHS Compliance. See our web site for RoHS Compliance methodologies and qualifications.

## Maximum Ratings

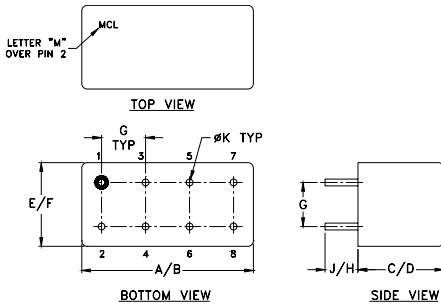
Operating Temperature	-55°C to 100°C
Storage Temperature	-55°C to 100°C
Control Current	30mA

## Pin Connections

INPUT	1
OUTPUT	8
CONTROL	3,4^
GROUND	2,5,6,7
CASE GROUND	2

^ pins must be connected together externally

## Outline Drawing



## Outline Dimensions (inch/mm)

A	B	C	D	E	F	
.770	.800	.385	.400	.370	.400	
19.56	20.32	9.78	10.16	9.40	10.16	
G	H	J	K			wt
.200	.20	.14	.031			grams
5.08	5.08	3.56	0.79			5.2

## Features

- wideband, 5 to 450 MHz
- hermetic case
- high in-out isolation
- low insertion loss, 3.5 dB typ.

## Applications

- military hi-rel applications
- bi-phase modulator
- electronic attenuator

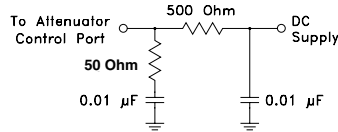
## Attenuator/Switch Electrical Specifications

FREQUENCY (MHz)	CON	INSERTION LOSS (dB) ±20 mA		MAX. INPUT PWR (dBm) ±20 mA		IN-OUT ISOLATION (dB) 0 mA			BI-PHASE X (±20 mA) Typ.								
		Mid-Band m	Total Range	1 dB compr.	no damage	L	M	U	Δ AMP (dB)	Phase (deg.) deviation from 180°							
f <sub>L</sub> -f <sub>U</sub>		Typ.	Max.	Typ.	Max.	Typ.	Min.	Typ.	Min.	Typ.	Min.	Total Range	Total Range				
5-450	DC-0.05	3.5	4.0	3.5	4.7	20	29	65	50	45	35	35	25	0.1	0.1	0.5	1.2

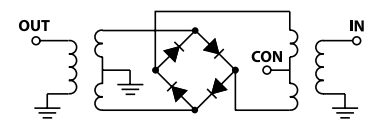
L = low range [f<sub>L</sub> to 10 f<sub>L</sub>] M = mid range [10 f<sub>L</sub> to f<sub>U</sub>/2] U = upper range [f<sub>U</sub>/2 to f<sub>U</sub>] m = [2 f<sub>L</sub> to f<sub>U</sub>/2]

Performance specifications apply for input power up to 10 dB below stated 1 dB compression.

## suggested control port biasing configuration

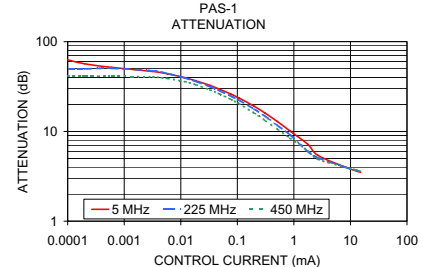
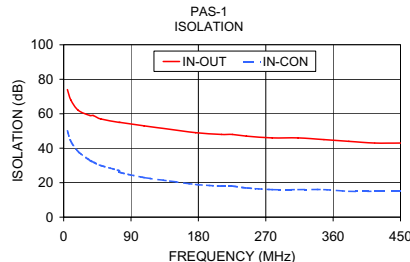
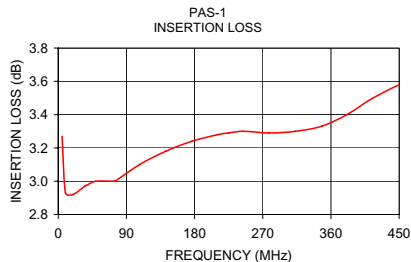


## electrical schematic



## Typical Performance Data

Freq. (MHz)	I. Loss (dB) at 20mA	±Control Δ AMP (dB)	20mA Δ Phase (deg.)	Isolation (dB)		Input R. Loss (dB)	Control Current (mA)	Attenuation (dB)			Phase Δ ref at 15mA Ctrl			Input VSWR			
				(in-out)	(in-con)			5 MHz	225 MHz	450 MHz	5 MHz	225 MHz	450 MHz	5 MHz	225 MHz	450 MHz	
	$\bar{x}$	$\sigma$	$\bar{x}$	$\bar{x}$	$\bar{x}$	$\bar{x}$					deg.	deg.	deg.				
5.0	3.27	0.025	0.02	179.9	74	50	11.8	0.0000	68.1	50.0	41.3	-52.4	124.7	108.2	2.9	2.9	2.6
9.5	2.93	0.019	0.02	179.9	68	44	13.4	0.0001	62.8	49.6	41.6	-9.9	119.7	103.2	2.9	2.9	2.6
19.5	2.92	0.017	0.02	179.9	62	38	14.3	0.0002	56.7	49.9	41.3	-18.0	114.6	102.4	2.9	2.9	2.6
35.0	2.97	0.017	0.02	179.9	59	33	14.5	0.0006	51.7	50.5	41.3	-20.7	101.4	95.5	2.9	2.9	2.6
39.5	2.98	0.017	0.03	179.9	59	32	14.5	0.0032	46.6	47.3	40.4	-10.7	58.4	76.3	2.9	2.9	2.6
49.5	3.00	0.017	0.03	179.9	57	30	14.4	0.0058	43.8	44.3	39.0	-6.4	45.6	60.3	2.9	2.9	2.6
74.0	3.00	0.019	0.04	179.8	55	27	14.1	0.0116	39.8	39.6	36.0	-0.4	29.9	43.3	2.8	2.9	2.6
75.1	3.00	0.018	0.03	179.8	55	26	14.1	0.0184	36.6	36.1	33.2	3.3	24.8	33.3	2.8	2.8	2.5
107.4	3.10	0.019	0.04	179.7	53	23	14.3	0.0327	32.6	31.6	29.1	5.9	18.3	23.7	2.8	2.7	2.4
141.8	3.18	0.019	0.04	179.7	51	21	14.6	0.0486	29.5	28.4	26.2	6.9	15.6	19.4	2.7	2.7	2.4
176.3	3.24	0.021	0.04	179.6	49	19	14.5	0.0787	25.9	24.6	22.6	7.6	13.3	14.8	2.6	2.5	2.2
210.8	3.28	0.021	0.04	179.5	48	18	14.6	0.1081	23.5	22.2	20.3	7.9	12.2	12.8	2.5	2.4	2.1
225.3	3.29	0.023	0.04	179.5	48	18	14.7	0.1975	19.1	17.8	16.1	7.8	10.0	9.7	2.2	2.2	1.9
244.2	3.30	0.024	0.04	179.4	47	17	14.8	0.3085	16.0	14.8	13.3	7.4	8.7	7.9	2.0	1.9	1.7
278.7	3.29	0.024	0.04	179.3	46	16	15.1	0.5100	12.9	11.7	10.6	6.5	7.3	6.0	1.7	1.7	1.4
313.2	3.30	0.026	0.05	179.2	46	16	15.1	0.8548	10.1	9.2	8.4	5.3	5.5	4.4	1.5	1.4	1.2
347.7	3.33	0.029	0.05	179.1	45	16	14.8	1.7555	7.2	6.0	6.1	3.3	3.4	2.5	1.3	1.2	1.1
381.0	3.40	0.034	0.05	179.1	44	15	15.0	2.6670	5.4	5.1	4.9	2.0	2.0	1.3	1.3	1.2	1.2
415.5	3.50	0.041	0.06	179.0	43	15	14.7	8.1232	4.0	4.0	4.0	0.5	0.5	0.4	1.5	1.4	1.4
450.0	3.58	0.044	0.06	178.9	43	15	13.7	15.1218	3.5	3.6	3.6	0.0	-0.1	0.0	1.6	1.5	1.4



**Mini-Circuits**  
ISO 9001 ISO 14001 CERTIFIED

ALL NEW  
minicircuits.com

P.O. Box 350166, Brooklyn, New York 11235-0003 (718) 934-4500 Fax (718) 332-4661 For detailed performance specs & shopping online see Mini-Circuits web site



The Design Engineers Search Engine Provides ACTUAL Data Instantly From MINI-CIRCUITS At: [www.minicircuits.com](http://www.minicircuits.com)

RF/IF MICROWAVE COMPONENTS

REV. A  
M98898  
PAS-1  
WP/TD/CP/AM  
070305