

TERMINAL PAD DIMENSIONS
CUSTOMER TO DETERMINE LAND SIZE

ELECTRICAL SPECIFICATIONS @ 25°C unless otherwise noted:

⑥① **INDUCTANCE:** 350nH min., 100kHz, 100mV, 40-39; 31-32; 30-29; 21-22; 37-36; 34-35; 27-26; 24-25, 8mADC, 1p.

DIELECTRIC RATING: 1500Vrms, 1 minute tested by applying 1800Vrms for 1 second between Input-Output.

TURNS RATIO & POLARITY: 1CT:1CT, ±2%.

INSERTION LOSS: -1.0dB max, 1M - 100MHz.

RETURN LOSS: -18dB min, 1M - 30MHz. -14dB min, 40M - 60MHz. -16dB min, 30M - 40MHz. -12dB min, 60M - 80MHz.

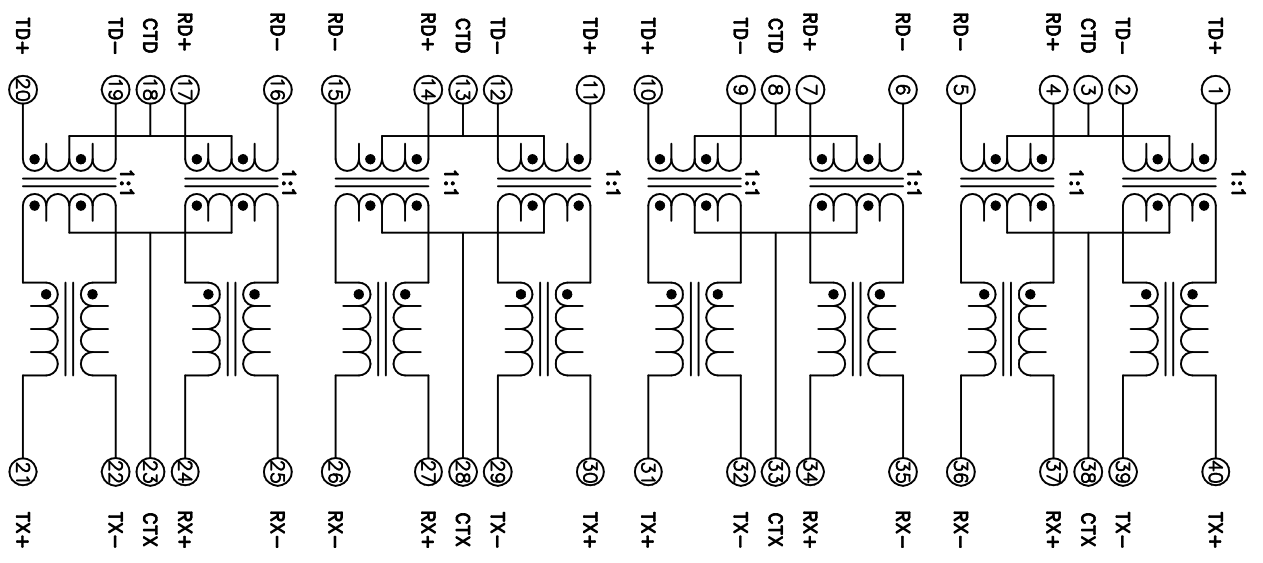
CROSSTALK: -32dB min, 1M - 100MHz.

DCMR: -40dB min, 1M - 100MHz.

CMRR: -30dB min, 1M - 100MHz.

⑥② **OPERATING TEMPERATURE RANGE:** 0°C to +70°C.

COPLANARITY: All 40 terminals must lie on a plane within .004 [10] of Surface A after lead tinning.



Midcom, Inc.
Wetford, SD USA
Toll Free: 800-643-2661
Fax: 605-886-4486

Unless otherwise specified:
Tolerances: Fractions: ±1/64
Angles: ±1° Decimals: ±.005 [127]
This drawing is dual dimensioned. Dimensions in brackets are in millimeters.

DRAWING TITLE
TRANSFORMER
PDFP-G40

Midcom

DRAWING NO.
000-7120-37R

AGENCY NUMBER	UL60950	E205930
	CSA60950	E205930
(No. CUL)		

REV. 6L 4/07