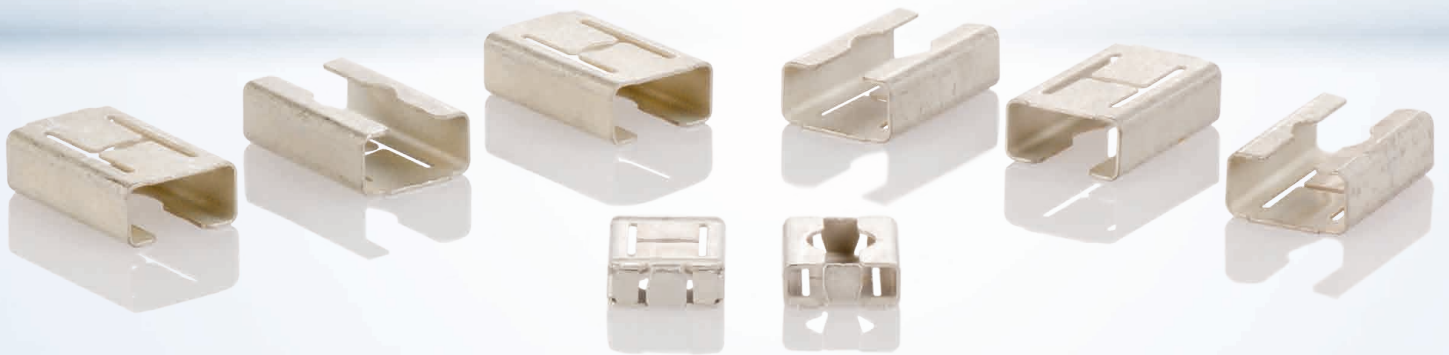


SMT – Solderable Spring Contacts



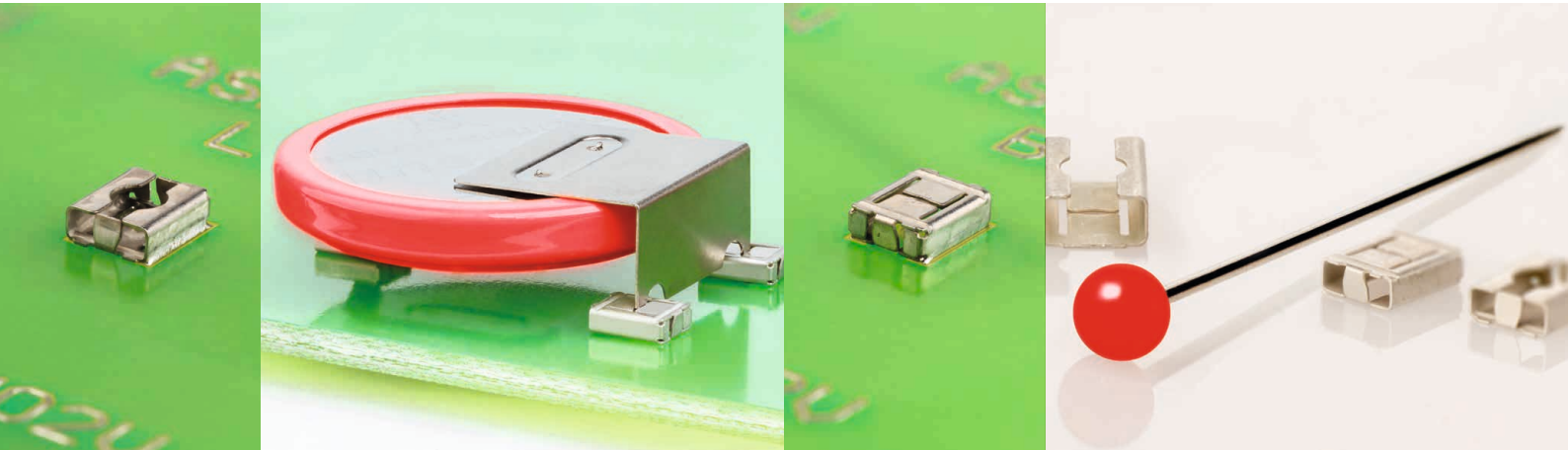
Solderable spring contact for component placement

These days, most circuit board designs still feature a mix of both surface mount and through-hole components. Not all components placed on a PCB however, can be run through the reflow oven. Components such as caps, batteries, certain LEDs cannot withstand the peak temperatures experienced during the reflow solder process. Thus, an additional solder process is often required to place these components on to the PCB.

METZ CONNECT has met this challenge with the ASM0x connector family. The ASM01 and ASM02 connector series, supplied in Tape & Reel, provide an SMT spring connector solution that enables customers to mount through-hole components directly on the printed circuit board immediately after a reflow process. Thanks to the design of ASM01 and ASM02, it is possible to place components on both sides of the PCB with through holes and therefore allows for optimal use of the limited space usually available on a circuit board.

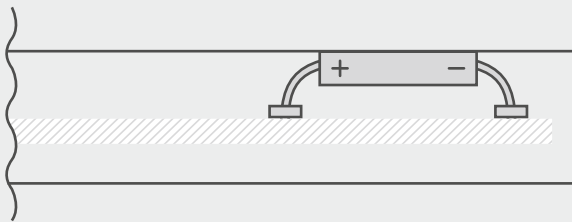
How it works: The ASM01 or ASM02 contact is placed automatically on to the board along with the other SMT

components. As soon as the PCB has passed through the reflow oven, the remaining temperature sensitive components can be plugged directly onto the spring contacts either by an automated or manual process. As a result, increased production capacity can be achieved as an additional manual hand solder or selective wave solder process is now redundant. At the same time, a high-quality, low-resistance contact between component and ASM0x contact is achieved.

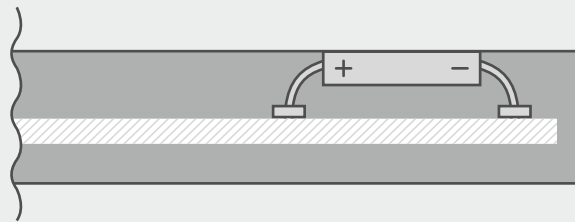


SMT solderable spring contacts

- > Cross sections:
 - 0.75 to 1.5 mm² (ASM01Y)
 - 0.10 to 0.75 mm² (ASM01W)
 - 0.25 to 0.50 mm² (ASM02V)
- > Direct connection of multi-conductor components
- > Compact size
- > Technical alternative to manual soldering
- > SMT-solderable (according to IPC/JEDEC J-STD-020D-MSL 1)
- > Tape & Reel packaged
- > Component placement possible on both sides of the PCB



Battery mounted onto the PCB with ASM contacts



Battery mounted onto the PCB with ASM contacts and potted

P/N	NAME	DESCRIPTION				
ASM01W						
ASM01W0164-0G16	SM01W01VXNN0G1					
ASM01W0164-1G16	SM01W01VXNN1G1	ASM01W01	SMT	15" Reel	solder pad/component side	
ASM01W0164-2G16	SM01W01VXNN2G1	ASM01W01	SMT	7" Reel	solder pad/solder side	
ASM01W0164-3G16	SM01W01VXNN3G1	ASM01W01	SMT	7" Reel	solder pad/component side	
ASM01W0164-4G16	SM01W01VXNN4G1	ASM01W01	SMT	13" Reel	solder pad/solder side	
ASM01W0164-5G16	SM01W01VXNN5G	ASM01W01	SMT	13" Reel	solder pad/component side	
ASM01Y						
ASM01Y0164	SM01Y01VXNN	ASM01Y01	SMT		single contact	
ASM01Y0164-0G16	SM01Y01VXNN0G1	ASM01Y01	SMT	15" Reel	solder pad/solder side	
ASM01Y0164-1G16	SM01Y01VXNN1G1	ASM01Y01	SMT	15" Reel	solder pad/component side	
ASM01Y0164-2G16	SM01Y01VXNN2G1	ASM01Y01	SMT	7" Reel	solder pad/solder side	
ASM01Y0164-3G16	SM01Y01VXNN3G1	ASM01Y01	SMT	7" Reel	solder pad/component side	
ASM01Y0164-4G16	SM01Y01VXNN4G1	ASM01Y01	SMT	13" Reel	solder pad/solder side	
ASM01Y0164-5G16	SM01Y01VXNN5G1	ASM01Y01	SMT	13" Reel	solder pad/component side	
ASM02V						
ASM02V0108-0G16	SM02V01VXNN00G1	ASM02V01	SMT	15" Reel	solder pad / solder side	
ASM02V0108-1G16	SM02V01VXNN01G1	ASM02V01	SMT	15" Reel	solder pad / component	

METZ CONNECT GmbH ist Mitglied in folgenden Organisationen und Verbänden.



METZ CONNECT GmbH

Im Tal 2
78176 Blumberg
Germany

Ph. +49 7702 533-0
Fax +49 7702 533-189

info@metz-connect.com
www.metz-connect.com



METZ CONNECT USA Inc.

200 Tornillo Way
Tinton Falls, NJ 07712
USA

Tel. +1-732-389-1300
Fax +1-732-389-9066

METZ CONNECT France SAS

28, Rue Schweighaeuser
67000 Straßburg
Frankreich

Tel. +33 3886 17073
Fax +33 3886 19473

METZ CONNECT Zhongshan Ltd.

Ping Chang Road
Ping Pu Industrial Park
Sanxiang Town
Zhongshan City, 528463
Guangdong Province
China

Tel. +86 760 86365 055
Fax +86 760 86365 050

METZ CONNECT Asia Pacific Ltd.

Suite 1803, 18/F
Chinachem Hollywood Centre,
1 Hollywood Road, Central
Hongkong

Tel. +852 26 027 300
Fax +852 27 257 522



QMS zertifiziert nach
DIN EN ISO 9001 - Reg.-Nr. 1514-03