

Product Change Notification - CYER-15JZNE779

Date: 20 Mar 2014

Product Category: SMSC; Analog (Thermal, Power Management & Safety); Analog (Linear & Mixed Signal) AND Interface

Notification subject: CCB 1337: Implement Label and Packing Changes for SMSC Products.

Notification text: **PCN Status:**
Final notification

Microchip Catalog Part Numbers Affected:

This change applies to virtually all tape & reel, tray, tube, & unit pack bag products.

Description of Changes:

1. Change Shipping Labels (inner, outer, and MSL caution labels)
2. Change BQM (Base Quantity Multiple)
3. Change Shipping Combination Rules
4. Change Packing Methods
5. Change Shipping Boxes

Note: Please review the attached document for pre and post details of the changes.

Impacts to Data Sheet:

Yes – BQM will change on the ordering information page.

Reason for Change:

To Improve Manufacturability

Change Implementation Status:

In Progress

Estimated First Ship Date:

May 2, 2014 (Date Code: 1418)

NOTE: Please be advised that during the transition period customers may receive pre and post change parts, due to existing inventory of the pre changed parts.

Markings to Distinguish Revised from Unrevised Devices:

Shipping labels, shipping boxes, and traceability

Document Revision History:

February 5, 2014: Issued final notification.

March 20, 2014: Revised the pre and post attachment to correct typos.

Attachment(s): [PCN Pre and Post Changes.pdf](#)

Please contact your local [Microchip sales office](#) with questions or concerns regarding this notification.

Terms and Conditions:

If you wish to change your product/process change notification (PCN) profile please log on to our website at <http://www.microchip.com/PCN> sign into myMICROCHIP to open the myMICROCHIP home page, then select a profile option from the left navigation bar.

To opt out of future offer or information emails (other than product change notification emails), click here to go to [microchipDIRECT](#) and login, then click on the "My account" link, click on "Update profile" and un-check the box that states "Future offers or information about Microchip's products or services."



MICROCHIP

PCN # CYER-15JZNE779

**Implement Label and Packing
Changes for SMSC Products**



Summary of Changes

- **Change Labels**
 - MSL Caution Label
 - Inner and Outer Shipping Labels
- **Change BQM (Base Quantity Multiple)**
- **Change Shipping Combination Rules**
- **Change Packing Methods**
 - Change Desiccant Type
 - Change Tube Length and Tube Stopper Length/Coding
 - Change Dry Pack for Tubes
 - Change Dry Pack for Tray
 - Change Tray Dimensions and Stacking
 - Change Tape and Reel dimensions
 - Change 13" Tape and Reel Hub Diameter
 - Change Dry Pack for 13" Tape and Reel
 - Change Dry Pack for Tape and Reel of QFP Packages
 - Change Non-Dry Pack for 13" Tape and Reel
 - Change Non-Dry Pack for 7" Tape and Reel
- **Change Shipping Boxes**



MSL Caution label (MSL-3)

PRE CHANGE



Caution
This bag contains
MOISTURE-SENSITIVE DEVICES

LEVEL

If blank, see adjacent
bar code label

1. Calculated shelf life in sealed bag: 12 months at $<40^{\circ}\text{C}$ and $<90\%$ relative humidity (RH)
2. Peak package body temperature: _____ $^{\circ}\text{C}$
If blank, see adjacent bar code label
3. After bag is opened, devices that will be subjected to reflow solder or other high temperature process must be
 - a) Mounted within hours of factory conditions
If blank, see adjacent bar code label
 $\leq 30^{\circ}\text{C}/60\%$ RH, or
 - b) Stored per J-STD-033
4. Devices require bake, before mounting, if:
 - a) Humidity Indicator Card reads $>10\%$ for level 2a - 5a devices or $>60\%$ for level 2 devices when read at $23 \pm 5^{\circ}\text{C}$
 - b) 3a or 3b are not met
5. If baking is required, refer to IPC/JEDEC J-STD-033 for bake procedure

Bag Seal Date: _____
If blank, see adjacent bar code label

Note: Level and body temperature defined by IPC/JEDEC J-STD-020

IPC-033c-3-

POST CHANGE



Caution
This bag contains
MOISTURE-SENSITIVE DEVICES

LEVEL

3

If blank, see adjacent
bar code label

1. Calculated shelf life in sealed bag: 24 months at $<40^{\circ}\text{C}$ and $<90\%$ relative humidity (RH)
2. Peak package body temperature: _____ $^{\circ}\text{C}$
If blank, see adjacent bar code label
3. After bag is opened, devices that will be subjected to reflow solder or other high temperature process must be
 - a) Mounted within 168 hours of factory conditions
If blank, see adjacent bar code label
 $\leq 30^{\circ}\text{C}/60\%$ RH, or
 - b) Stored per J-STD-033
4. Devices require bake, before mounting, if:
 - a) Humidity Indicator Card reads $>10\%$ for level 2a - 5a devices or $>60\%$ for level 2 devices when read at $23 \pm 5^{\circ}\text{C}$
 - b) 3a or 3b are not met
5. If baking is required, refer to IPC/JEDEC J-STD-033 for bake procedure

Bag Seal Date: _____
If blank, see adjacent bar code label

Note: Level and body temperature defined by IPC/JEDEC J-STD-020

IPC-033c-3-



MSL Caution label (MSL-2)

PRE CHANGE



Caution
This bag contains
MOISTURE-SENSITIVE DEVICES

LEVEL

If blank, see adjacent
bar code label

1. Calculated shelf life in sealed bag: 12 months at $<40^{\circ}\text{C}$ and $<90\%$ relative humidity (RH)
2. Peak package body temperature: _____ $^{\circ}\text{C}$
If blank, see adjacent bar code label
3. After bag is opened, devices that will be subjected to reflow solder or other high temperature process must be
 - a) Mounted within hours of factory conditions
If blank, see adjacent bar code label
 $\leq 30^{\circ}\text{C}/60\%$ RH, or
 - b) Stored per J-STD-033
4. Devices require bake, before mounting, if:
 - a) Humidity Indicator Card reads $>10\%$ for level 2a - 5a devices or $>60\%$ for level 2 devices when read at $23 \pm 5^{\circ}\text{C}$
 - b) 3a or 3b are not met
5. If baking is required, refer to IPC/JEDEC J-STD-033 for bake procedure

Bag Seal Date: _____
If blank, see adjacent bar code label

Note: Level and body temperature defined by IPC/JEDEC J-STD-020

IPC-033c-3-

POST CHANGE



Caution
This bag contains
MOISTURE-SENSITIVE DEVICES

LEVEL

2

If blank, see adjacent
bar code label

1. Calculated shelf life in sealed bag: 24 months at $<40^{\circ}\text{C}$ and $<90\%$ relative humidity (RH)
2. Peak package body temperature: _____ $^{\circ}\text{C}$
If blank, see adjacent bar code label
3. After bag is opened, devices that will be subjected to reflow solder or other high temperature process must be
 - a) Mounted within: 1 year of factory conditions
If blank, see adjacent bar code label
 $\leq 30^{\circ}\text{C}/60\%$ RH, or
 - b) Stored per J-STD-033
4. Devices require bake, before mounting, if:
 - a) Humidity Indicator Card reads $>10\%$ for level 2a - 5a devices or $>60\%$ for level 2 devices when read at $23 \pm 5^{\circ}\text{C}$
 - b) 3a or 3b are not met
5. If baking is required, refer to IPC/JEDEC J-STD-033 for bake procedure

Bag Seal Date: _____
If blank, see adjacent bar code label

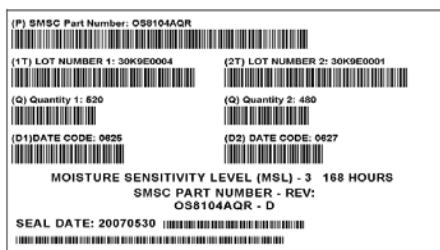
Note: Level and body temperature defined by IPC/JEDEC J-STD-020



INNER BOX / REEL / BAG LABELS

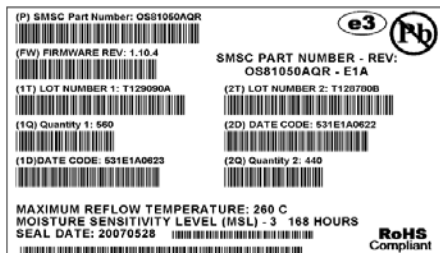
PRE CHANGE (5 labels)

Reel Label size: 6 x 2.25 inch (≥ 44 mm. wide Tapes)



2.5 inch

4 inch



2.5 inch

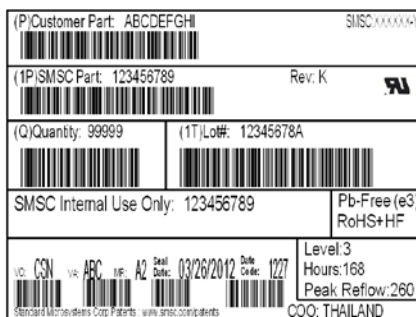
4 inch



Reel Label size: 4 x 1.25 inch (small tape & reel)



Tray/Tubes Label size: 4 x 3 inch



POST CHANGE

Dimension: 100mm. x 60 mm.





OUTER LABEL

PRE CHANGE

Dimension: 4.5x6.5 inch

From: AAAAAAAAAAAAAAAA 12345679ABCD 123456789 123456 ABCDEFGHI	Ship To: ABCD Co Ltd No.1, ABCD Road, ACBDE ABCDEF G123456789 ABCDEF G
Pb-Free(e3) RoHS+HF	Country of Origin MY
Packing Slip Number B-AD-ABC-S5316737 Line Numb 10 	
PO Number 1071507155 	
Customer ABCD12346 	
Part Numb TEST123456 	
Box QTY 29400 	SMSC Catalog No USB123456689-A
Shipping Point AB: 1234567	
Weight 	Carrier <Empty>
Package Count Box 0000 of 0000	

6.5 inch

4.5 inch

POST CHANGE

Dimension: 152 mm. x 102 mm.

A-BB-CCC- 	SHIP TO: MICROCHIP TECHNOLOGY IRELAND LTD. WILSON LOGISTIC CT, 6/F PHILIPS IND BLDG., 24-28 KUNG KUNG YIP ST, KWAICHUNG HONG KONG
Cust. P/N: 12345ABCD 	
Catalog P/N: ABC1234AB 	 RoHS
PO#: 12345678/ 	SO #: 472542/26 Qty: 200000
	ABCDEFGH 10-21-2013 (mm-dd-yyyy)
	Carton of 1 kgs

102 mm.

152 mm.



Change Base Quantity Multiple (BQM) Per Package

Package	Packing Components	PRE CHANGE (Automotive)	PRE CHANGE (Commercial)	POST CHANGE
28L PLCC	Units/Tube	NA	38	39
	Tubes/bag		49	25
8L SOIC (0.150")	Units/Tube	NA	96	100
	Tubes/bag		100	100
5/6L TSOT	Units/Reel	NA	2500	3000
	Reel/bag		1	1
8L SOIC (0.150")	Units/Reel	2000	2800	3300
	Reel/bag	1	1	1
8L TDFN (2x3)	Units/Reel	NA	5000	3300
	Reel/bag		1	1
8/10L VDFN (3x3)	Units/Reel	NA	4000	5000
	Reel/bag		1	1
8/10L MSOP	Units/Reel	NA	4000	2500
	Reel/bag		1	1
14L SOIC (0.150")	Units/Reel	NA	2500	2600
	Reel/bag		1	1
12/16/20L QFN (4x4)	Units/Reel	NA	4000	5000
	Reel/bag		1	1
16/28/32L QFN/VQFN (5x5)	Units/Reel	2500	4000	5000
	Reel/bag	1	1	1
36/40L QFN/VQFN (6x6)	Units/Reel	2500	3000	3000
	Reel/bag	1	1	1
48L QFN/VQFN (7x7)	Units/Reel	2500	3000	2500
	Reel/bag	1	1	1
16L QFN (3x3)	Units/Reel	NA	4000	5000
	Reel/bag		1	1
24L VQFN (4x4)	Units/Reel	2500	4000	5000
	Reel/bag	1	1	1
56LVQFN (8x8)	Units/Reel	2500	3000	3000
	Reel/bag	1	1	1
64L VQFN (9x9)	Units/Reel	2500	3000	3000
	Reel/bag	1	1	1
16L QSOP (0.150")	Units/Reel	NA	2800	2500
	Reel/bag		1	1
72L QFN/VQFN (10x10)	Units/Reel	3000	2500	3000
	Reel/bag	1	1	1
44/64L TQFP (10x10x1.0)	Units/Reel	1000	NA	1200
	Reel/bag	1		1
128L TQFP (14x14x1.0)	Units/Reel	1000	1500	1000
	Reel/bag	1	1	1



Change to Shipping Combination Rules

Packing Media	Combination Pre Change	Combination Post Change
Tube	1 Date Code (commercial) 1 Trace Code (Automotive)	1 Date Code
Tray	1 Date Code	3 Date codes
Tape and Reel	2 Production lot (commercial)	No limit to the number of production lot numbers – follow date code combination rule.
	2 Date codes (commercial) 2 Trace codes (automotive)	3 Date codes
	1 Country of Origin	1 Assemble site
	1 final electrical test program revision	No limit to number of final electrical test program revisions

Change Packing Method Desiccant

PRE CHANGE (2 options)

Silica Gel desiccants



Bentonite Clay desiccants



POST CHANGE (1 option)

Bentonite Clay desiccants only





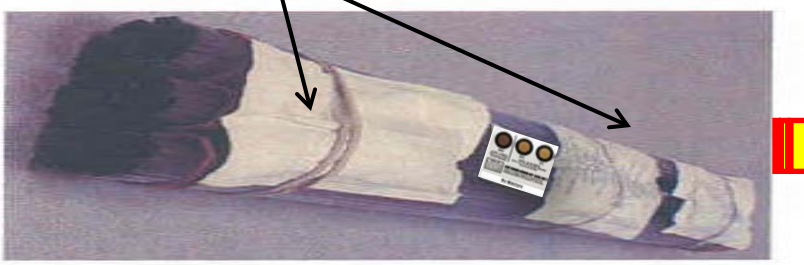
Change Packing Method Tube length & Stopper coding

Package	PRE CHANGE			POST CHANGE		
	Tube length	Stopper length	Stopper coding	Tube length	Stopper length	Stopper coding
28 PLCC	508 mm	21.6 mm	-Green on pin#1 - Black on other	508 mm	17.5 mm	-White on pin#1 - Black on other
8L SOIC	508 mm	9.35 mm	Black (both)	520.7 mm	8.6 mm	-White on pin#1 - Black on other

Change Packing Method Dry Pack for Tubes

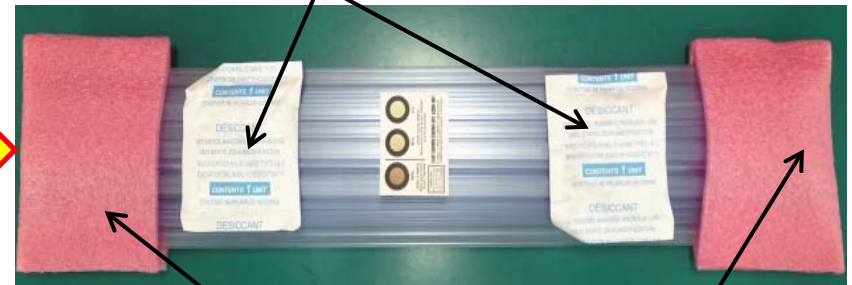
PRE CHANGE

Desiccant bag 3 units



POST CHANGE

Desiccant bag 2 units



Antistatic PE foam END CAP



Moisture barrier Bag
203 x 711



Moisture barrier Bag
160 x 650



Change Packing Method Dry Pack for Trays

PRE CHANGE

POST CHANGE



Moisture barrier Bag
254 x 508



Moisture barrier Bag
280 x 560



Change to Tray Stacking

Package	Packing Components	PRE CHANGE	POST CHANGE
44/64L LQFP (10x10x1.4)	Trays/Stack	10 + 1	5 + 1
44/64L TQFP (10x10x1.0)	Trays/Stack	10 + 1	5 + 1

PRE CHANGE

10 Trays + 1 cover tray



POST CHANGE

5 Trays + 1 cover tray





Change Packing Method Tape and Reel dimensions

Package	PRE CHANGE (Automotive)			PRE CHANGE (Commercial)			POST CHANGE		
	width	pitch	depth	width	pitch	depth	width	pitch	depth
5/6L TSOT (2.9x1.6)	NA	NA	NA	8	4	1.6	8	4	1.37
14L SOIC	NA	NA	NA	12	8	1.8	16	8	2.1
8L TDFN (2x3)	NA	NA	NA	12	4	1.0	12	8	1.0
56L VQFN (8x8)	16	12	1.0	16	12	1.1	16	12	1.0
64L VQFN (9x9)	16	12	1.8	16	12	1.1	16	12	1.1
72L QFN (10x10)	24	12	1.40	24	16	1.10	24	12	1.40
44/64L TQFP (10x10x1.0)	24	16	1.15	24	16	1.15	24	16	1.2
128L VTQFP (14x14x1.0)	32	24	1.05	24	20	1.20	24	20	1.2



Change 13" Tape and Reel Hub Diameter

Package	PRE CHANGE (Automotive)	PRE CHANGE (Commercial)	POST CHANGE
8/10L MSOP	NA	7	4
8L TDFN (2x3)	NA	7	4
8/10L VDFN (3x3)	NA	7	4
16L QFN (3x3)	NA	7	4
12/16/20L VQFN (4x4)	NA	7	4
24L VQFN (4x4)	4	7	4
128L MQFP (14x20)	7	NA	4



Change Packing Method Dry Pack for 13" Tape and Reel for all packages

PRE CHANGE



4 units of desiccant

3-dot HIC off center

White color reel



Moisture barrier bag 381 x 457



For automotive products cardboard cutout included

POST CHANGE



3-dot HIC centered

2 units of desiccant

Blue color reel



Moisture barrier bag 400 x 440 without cardboard cutouts

Change Packing Method

Dry Pack for Tape and Reel QFP

PRE CHANGE



No cushion or
Bubble sheet
included



No Bubble Sheet

POST CHANGE

Insert QFP inner
box (M02-007)

Bubble sheet

Add cushion to protect part
in tape and reel dry pack



Tape/Reel with
vacuum sealed

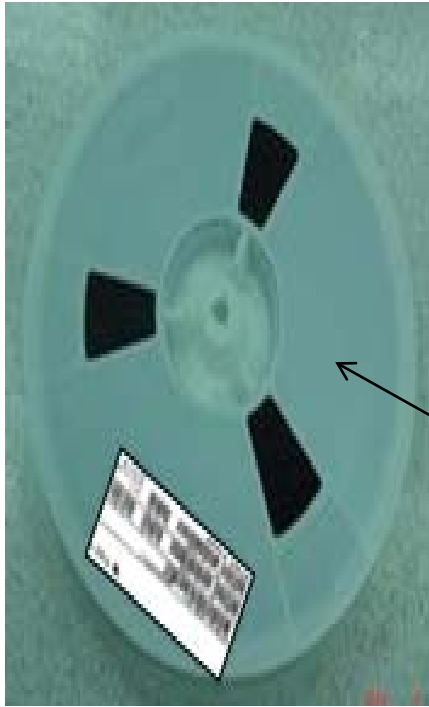
Add Bubble Sheet





Change Packing Method (Non-Dry pack, 13" reel)

PRE CHANGE



White color reel

POST CHANGE



Blue color reel



Packing Materials (Non-Dry pack, 7" reel)

PRE CHANGE



White color reel

POST CHANGE



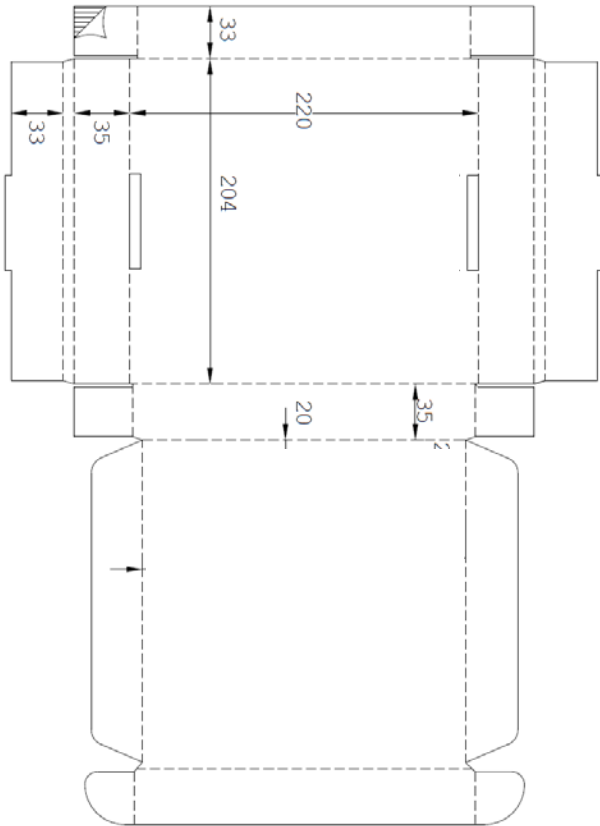
Blue color reel



7 Inch Reel Inner Box

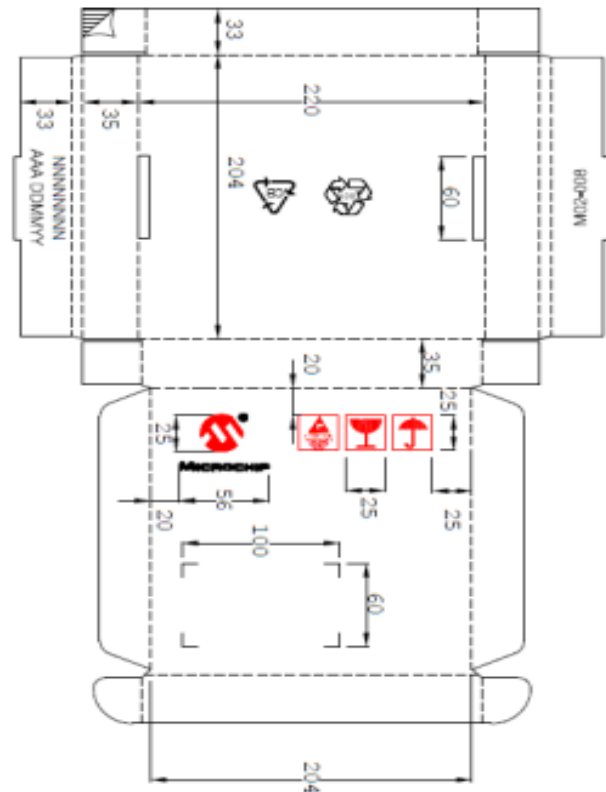
PRE CHANGE

Dimension: 204 x 220 x 35 mm.



POST CHANGE

Dimension: 204 x 220 x 35 mm.





7 Inch Reel Outer Carton

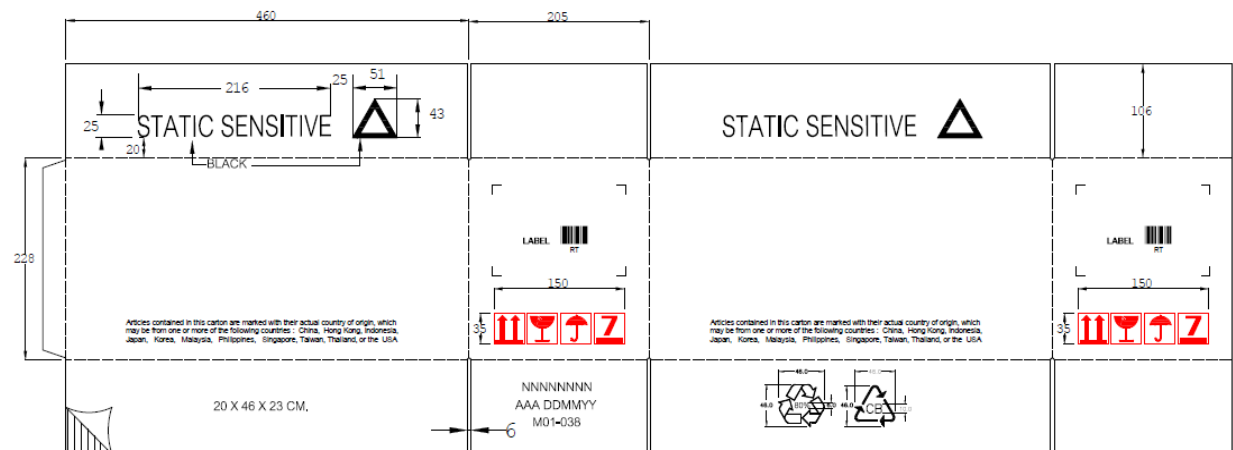
PRE CHANGE

Dimension (W x L x H)

Did not use standard dimensions.
Used carton dimensions based on conditions.

POST CHANGE

Dimension (W x L x H)
205x460x228 mm.



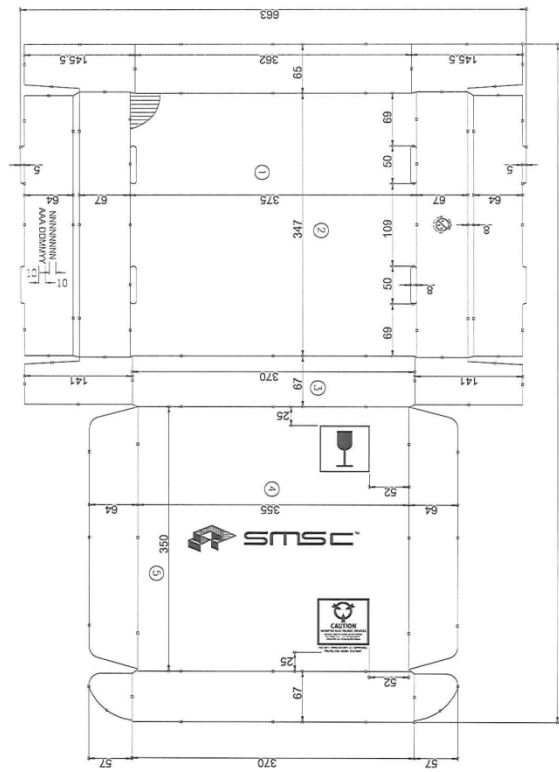
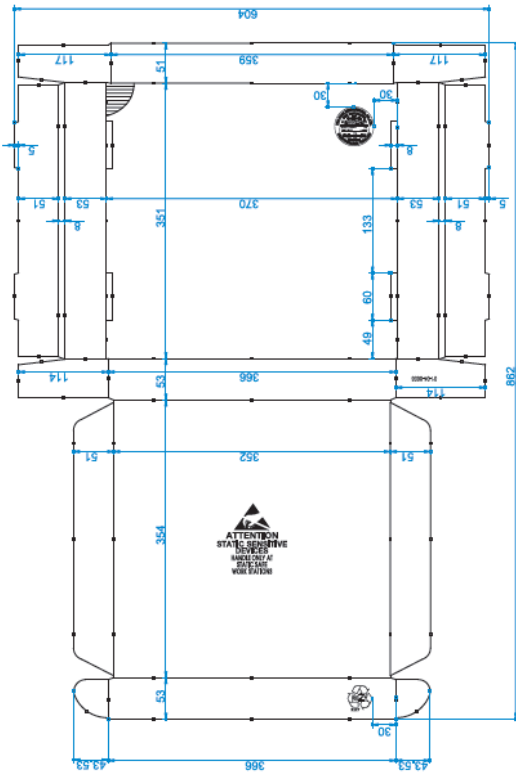


13 Inch Reel Inner Box

PRE CHANGE

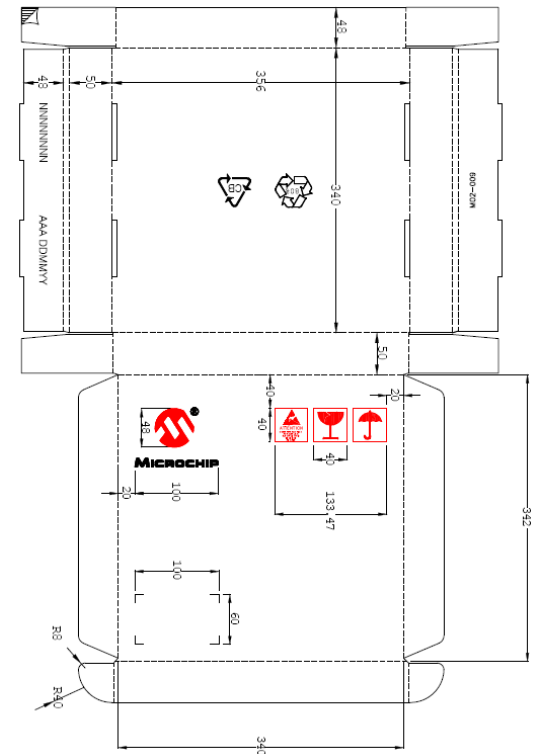
Automotive Product
Dimension: 354x370x53 mm

Commercial Product
Dimension: 350x375x67 mm



POST CHANGE

Dimension: 342 x 365 x 50 mm



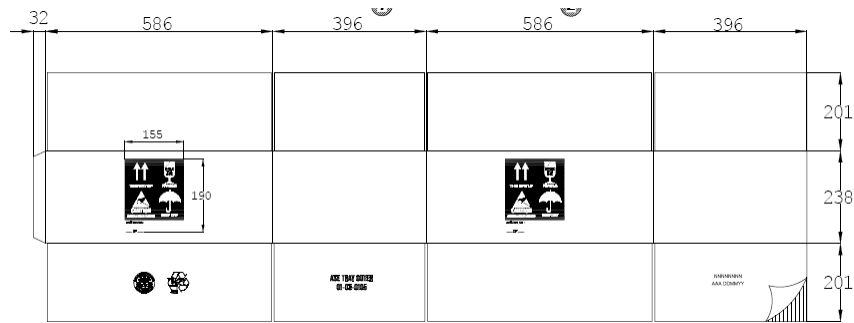


13 Inch Reel Outer Carton

PRE CHANGE

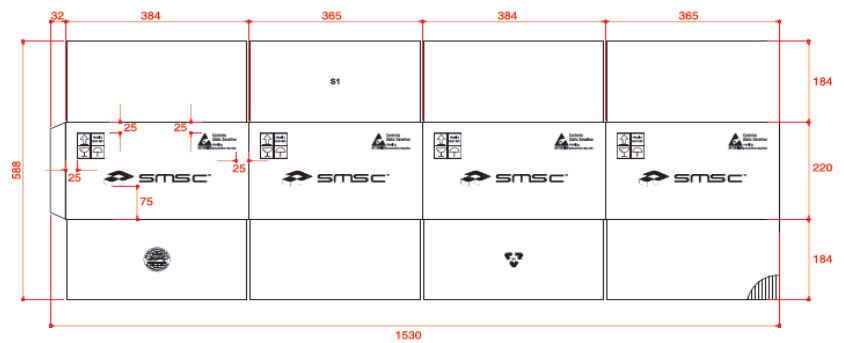
Automotive Product

Dimension: 396x 586 x 238 mm (below)



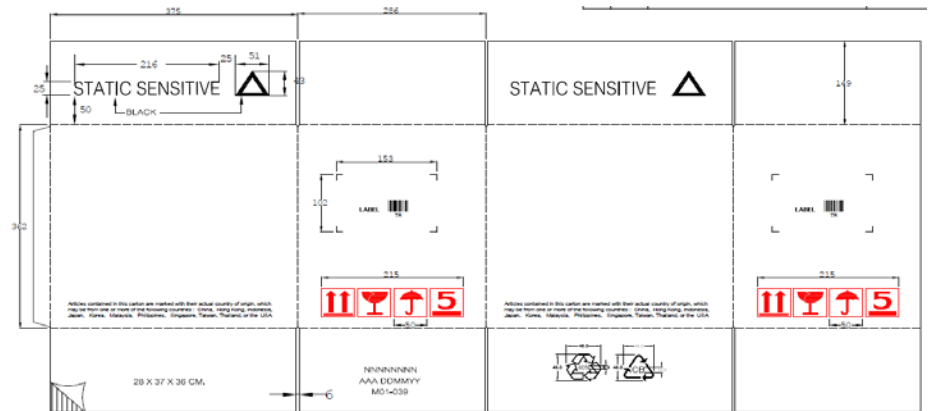
Commercial Product

Dimension: 365x 384 x 220 mm (below)



POST CHANGE

Dimension: (W x L x H) 226 x 375 x 362 mm
(drawing to the right)

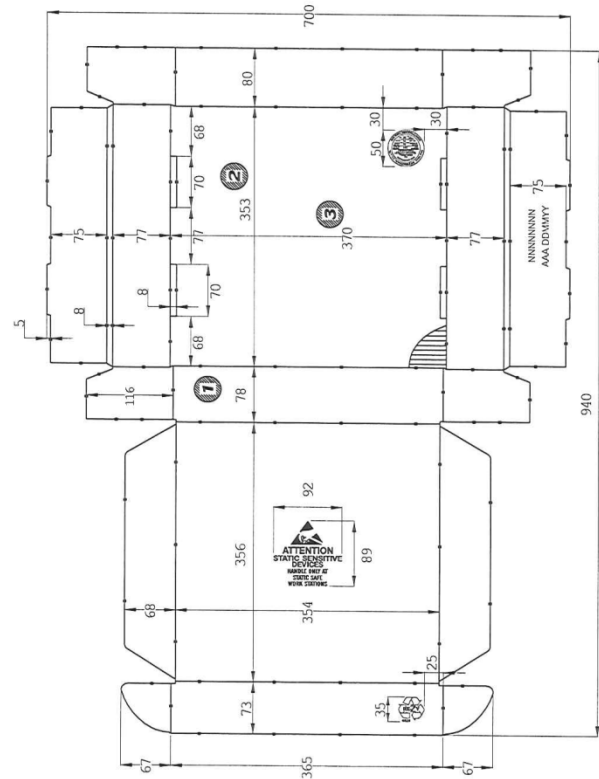




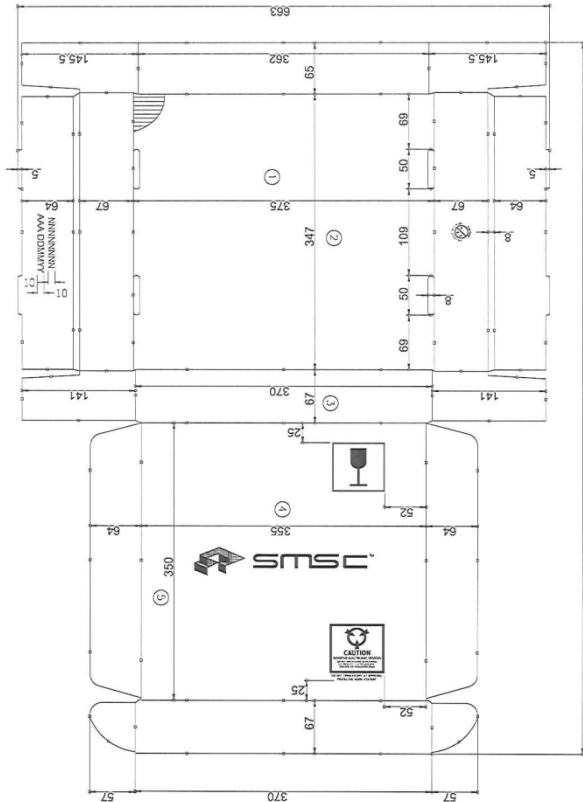
13 Inch Reel Inner Box for QFP and $\geq 32\text{mm}$ wide tape

PRE CHANGE

Automotive Product
Dimension: 356x370x78mm

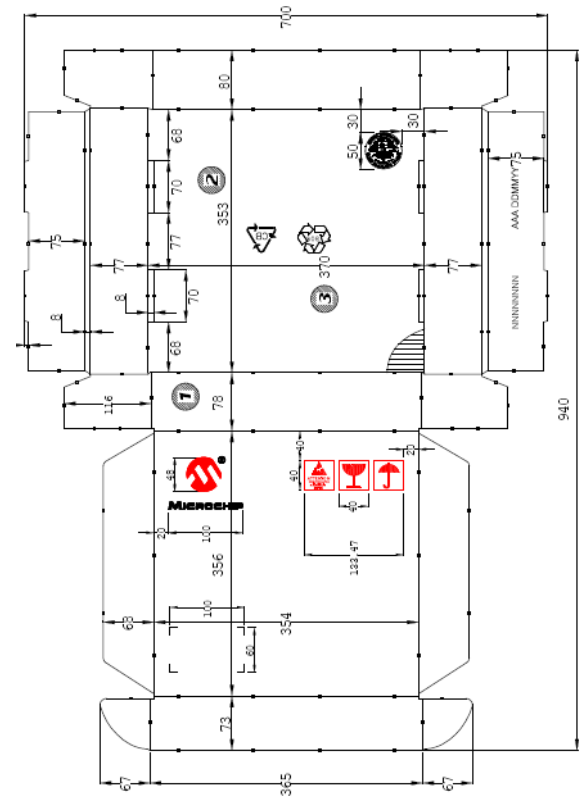


Commercial Product
Dimension: 350x375x67 mm



POST CHANGE

Dimension: 356 x 370 x 78 mm



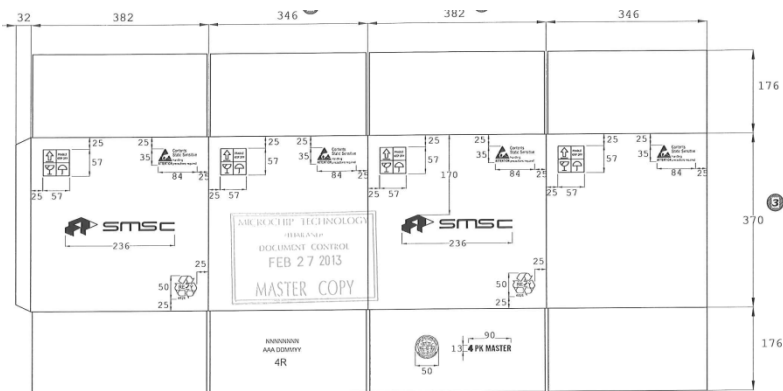


13 Inch Reel Outer Carton for QFP and $\geq 32\text{mm}$ wide tape

PRE CHANGE

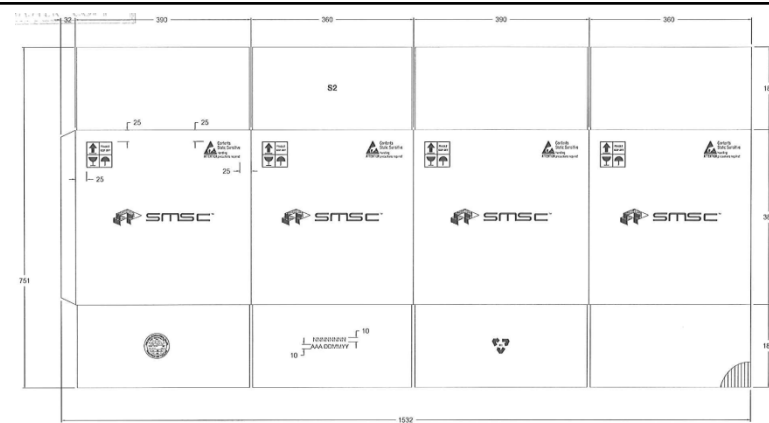
Automotive Product

Dimension: 346x382x370mm (below)



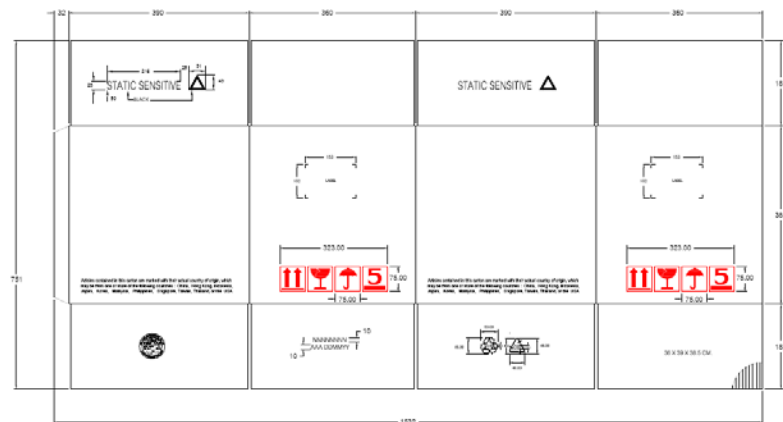
Commercial Product

Dimension: 360x390x385mm (below)



POST CHANGE

Dimension: (W x L x H) 360x390x385mm (drawing to the right)





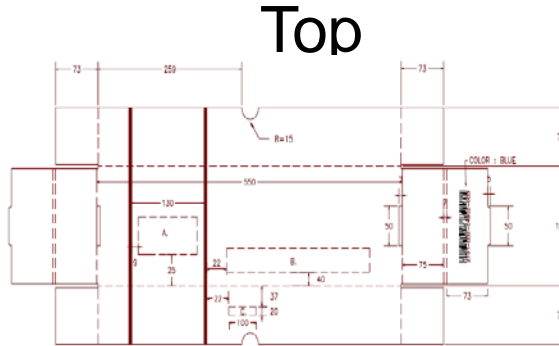
PLCC tubes Inner box

PRE CHANGE

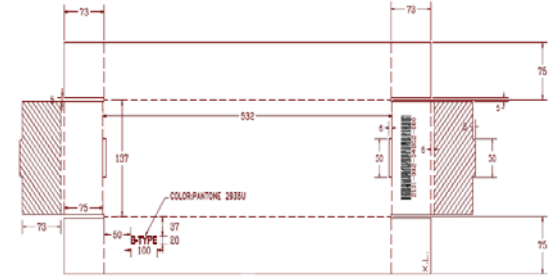
Dimension:

Top: 150x550x75mm

Btm: 137x532x75 mm



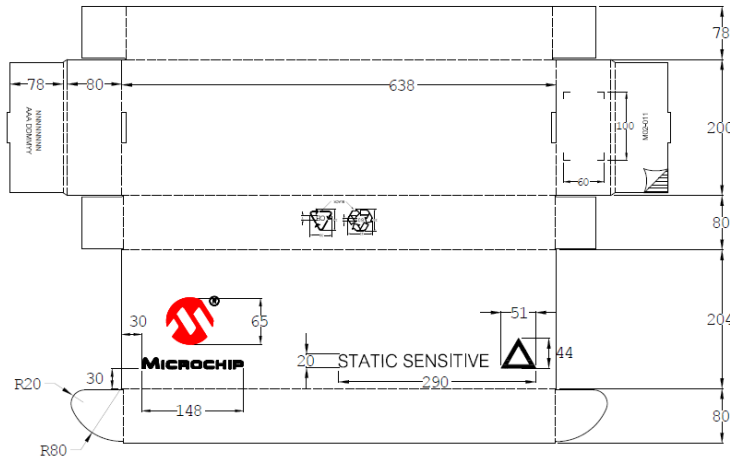
Bottom



POST CHANGE

Dimension:

200 x 638 x 80 mm

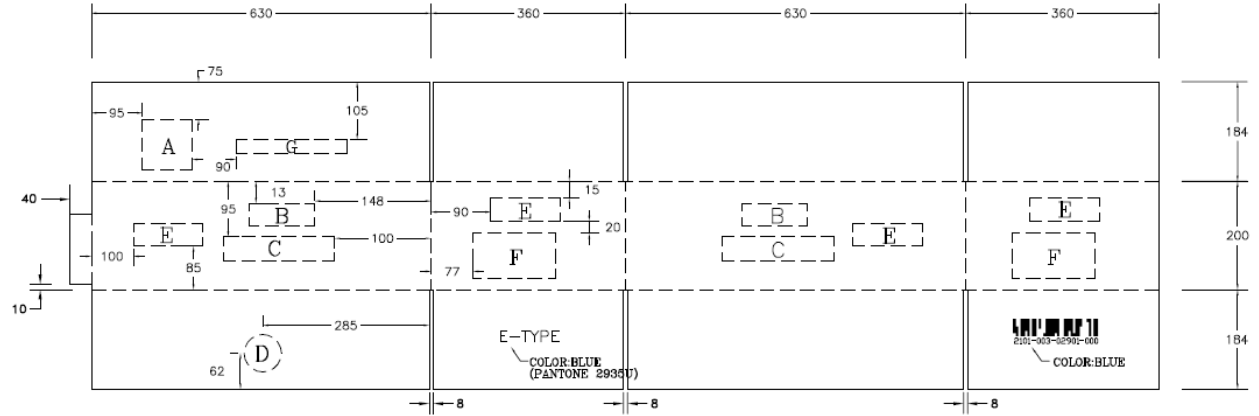




PLCC tubes Outer Carton

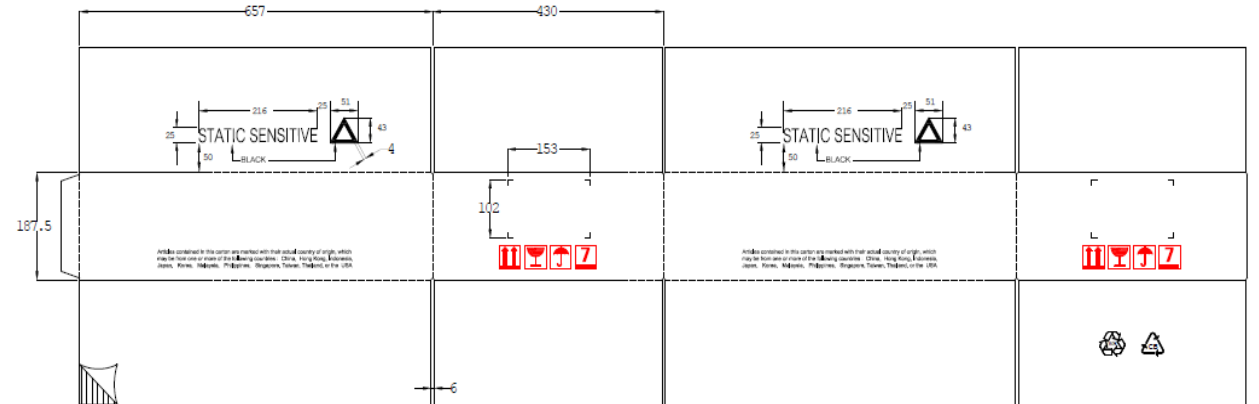
PRE CHANGE

Dimension:
360x630x200 mm



POST CHANGE

Dimension:
430 x 657 x 187.5 mm

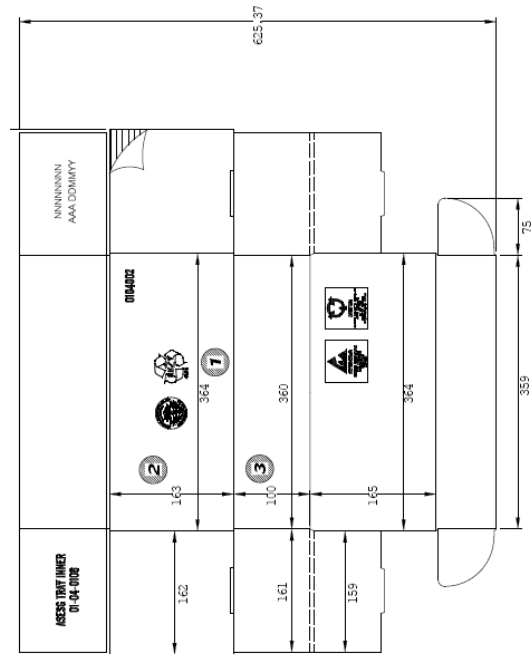


Tray Inner box

PRE CHANGE

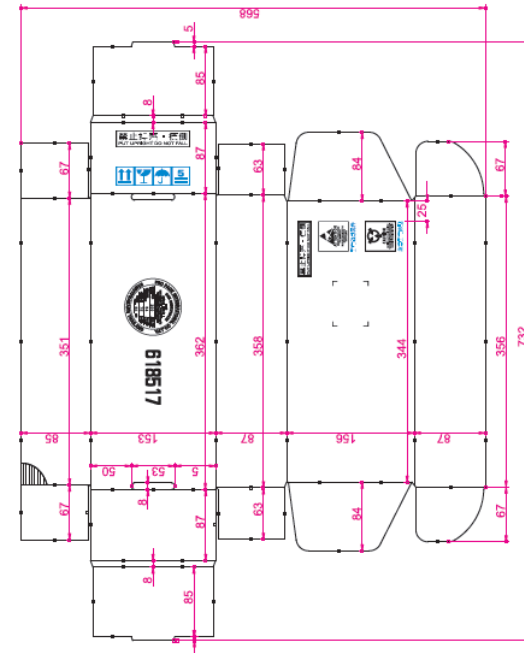
Automotive Product

Dimension: 165 x 364 x 100 mm



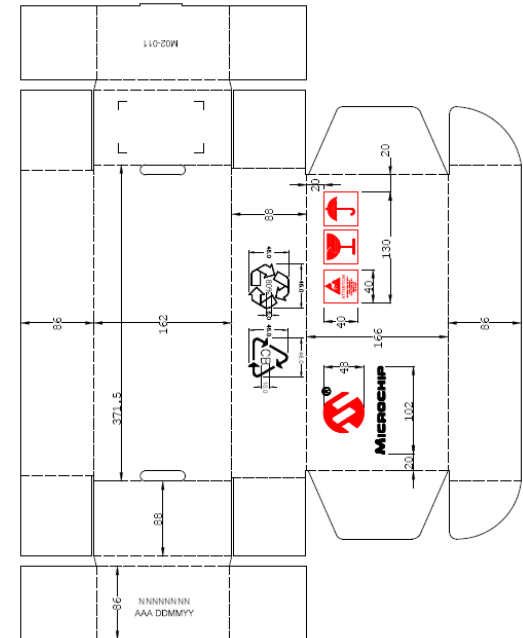
Commercial Product

Dimension: 156 x 362 x 87 mm



POST CHANGE

Dimension: 166 x 371.5 x 88 mm

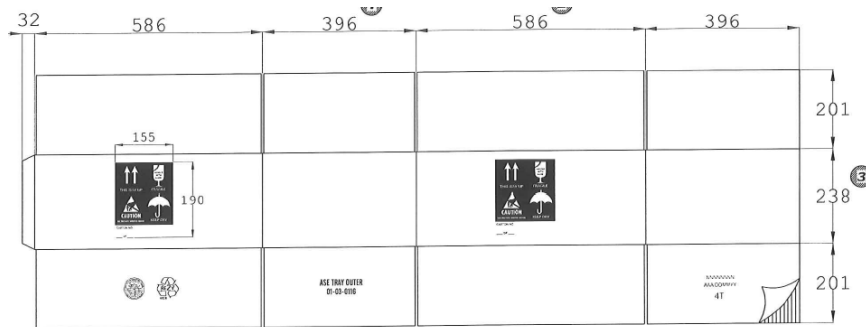




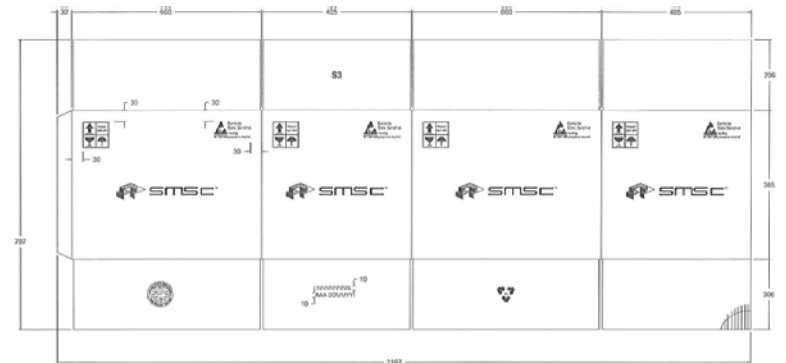
Tray Outer Carton

PRE CHANGE

Automotive product
Dimension: 396 x 586 x 238 mm



Commercial product
Dimension: 405x660x365mm



POST CHANGE

Dimension:
345 x 392 x 195 mm

