




A Leading Provider of Microcontrollers & Analog Semiconductors

Product Change Notification - CYER-02YIAF431

Date: 13 Jan 2011

Product Category: Memory

Device Family: 

Notification subject: CCB 1010: Qualification of Memory Products in 8L SOIC, 8L SOIJ, 8L PDIP, 8L MSOP, 3L SOT-23, 5L SOT-23, and 6L SOT-23 packages with palladium coated copper (CuPd) wire at MTAI assembly site

Notification text:

PCN Status:
Initial notification

Microchip Parts Affected:
See attachments of affected catalog part numbers (CPN) labeled as...
[PCN_CYER-02YIAF431_Affected_CPN.xls](#)
[PCN_CYER-02YIAF431_Affected_CPN.pdf](#)

Description of Change:
Qualification of Memory Products in 8L SOIC, 8L SOIJ, 8L PDIP, 8L MSOP, 3L SOT-23, 5L SOT-23, SOT-23 packages with palladium coated copper (CuPd) wire at MTAI assembly site.

Pre Change:
Gold (Au) wire

Post Change:
Palladium coated copper (CuPd) wire

Impacts to Data Sheet:
None

Reason for Change:
To improve manufacturability

Change Implementation Status:
In Progress

Estimated First Ship Date:
March 4, 2011

NOTE: Please be advised that after the estimated first ship date customers may receive pre and post parts, due to existing inventory of the pre changed parts.

Markings to Distinguish Revised from Unrevised Devices:
Traceability code

PCN CYER-02YIAF431 Document Revision History:
January 13, 2011 – Initial notification issue date.

Attachment(s): [PCN_CYER-02YIAF431_Affected_CPN.pdf](#)
[PCN_CYER-02YIAF431_Affected_CPN.xls](#)
[PCN_CYER-02YIAF431_Eng Qual Data.pdf](#)
[PCN_CYER-02YIAF431_Qual Plan.pdf](#)

Please contact your local [Microchip sales office](#) with questions or concerns regarding this notification.

Terms and Conditions:

If you wish to change your product/process change notification (PCN) profile please log on to our website at <http://www.microchip.com/PCN> sign into myMICROCHIP to myMICROCHIP home page, then select a profile option from the left navigation bar.

To opt out of future offer or information emails (other than product change notification emails), click here to go to [microchipDIRECT](#) and login, then click on the "My account" link, then click on "Update profile" and un-check the box that states "Future offers or information about Microchip's products or services."



MICROCHIP

QUALIFICATION PLAN

PCN#: CYER-02YIAF431

**Date:
December 2, 2010**

**Qualification of Memory Products in 8L SOIC, 8L SOIJ,
8L PDIP, 8L MSOP, 3L SOT-23, 5L SOT-23, and 6L SOT-
23 packages with palladium coated copper (CuPd) wire
at MTAI assembly site**

Distribution

Surasit P.
Wanphen L.
Wichai K.
Chalermpon P.

Rangsun K.
A. Navarro
R. Sharma

Microchip Technology (Thailand) Co.,Ltd.
14 Moo 1 T.Wangtakien A. Muangchacherngsao,
Chacherngsao, Thailand,24000
Tel. (6638) 857119-45, 857311-19 ext. 1231
Fax (6638) 857149-50

Purpose: _____ Qualification of Memory Products in 8L SOIC, 8L SOIJ, 8L PDIP, 8L MSOP, 3L SOT-23, 5L SOT-23, and 6L SOT-23 packages with palladium coated copper (CuPd) wire at MTAI assembly site.

CCB: _____ 1010

Lead frame:

Material _____ A194

Surface _____ Ag spot plate

Process _____ Stamped

Lead Lock _____ No

Wire:

Material _____ Copper with Palladium coating (CuPd)

Die Attach Epoxy:

Part Number _____ 8390A

Conductive _____ Yes

Mold Compound: _____ SG-8300GM

Reliability Test plan: _____ See attached, STD Package Reliability Test plan on each package.

Test Name	Conditions	Reliability Stress Read Point -40°C to +85°C datasheet operating range (1 Temp)	Pre & Post Reliability Stress Test Temperature (°C) -40°C to +85°C datasheet operating range (1 Temp)	Sample Size	Min. Qty of Spares per Lot (should be properly marked)	Qty of Lots	Total Units	Fail Accept Qty	Est. Duration (Days)	Special Instructions
Wire Bond Pull - WBP	Mil. Std. 883-2011			5	0	1	5	0 fails after TC	5	30 bonds from a min. 5 devices.
Wire Bond Shear - WBS	CDF-AEC-Q100-001			5	0	1	5	0	5	30 bonds from a min. 5 devices.
External Visual	Mil. Std. 883-2009/2010			All devices prior to submission for qualification testing	0	3	ALL	0	5	
HTSL (High Temp Storage Life)	+175°C	500 hrs	+25 +85	45	5	1	50	0	10	Spares should be properly identified.
Preconditioning - Required for surface mount devices	+150°C Bake for 24 hours, moisture loading requirements per MSL level + 3X reflow at peak reflow temperature per Jedec-STD-020C for package type. Perform SAM analysis using the standard sample size. MSL-1 @ 260°C		+25	231	15	3	738	0	15	Spares should be properly identified. 77 parts from each lot to be used for HAST, Autoclave, Temp Cycle test.
HAST	+130°C/85% RH for 96 hours. 1 lot to be tested at 85 and 125C	96 hrs	+25 +85	77	5	3	246	0	10	Spares should be properly identified. Use the parts which have gone through Pre-conditioning.

Test Name	Conditions	Reliability Stress Read Point -40°C to +85°C datasheet operating range (1 Temp)	Pre & Post Reliability Stress Test Temperature (°C) -40°C to +85°C datasheet operating range (1 Temp)	Sample Size	Min. Qty of Spares per Lot (should be properly marked)	Qty of Lots	Total Units	Fail Accept Qty	Est. Duration (Days)	Special Instructions
Unbiased HAST	+130°C/85% RH for 96 hours. 1 lot to be tested at 85 and 125C	96 hrs	+25	77	5	3	246	0	10	Spares should be properly identified. Use the parts which have gone through Pre-conditioning.
Temp Cycle	-65°C to +150°C. 3 gram force WBP on 5 devices from 1 lot, test following Temp Cycle stress. 1 lot to be tested at 85 and 125C	500 cycles	+85	77	5	3	246	0	15	Spares should be properly identified. Use the parts which have gone through Pre-conditioning.



MICROCHIP

ENGINEERING QUALIFICATION DATA

PCN#: CYER-02YIAF431

**Date:
December 2, 2010**

**Qualification of Memory Products in 8L SOIC, 8L SOIJ, 8L PDIP,
8L MSOP, 3L SOT-23, 5L SOT-23, and 6L SOT-23 packages with
palladium coated copper (CuPd) wire at MTAI assembly site**

Distribution

Surasit P.	Rangsun K.
Wanphen L.	A. Navarro
Wichai K.	R. Sharma
Chalermpon P.	

Microchip Technology (Thailand) Co.,Ltd.
14 Moo 1 T.Wangtakien A. Muangchacherngsao,
Chacherngsao, Thailand,24000
Tel. (6638) 857119-45, 857311-19 ext. 1231
Fax (6638) 857149-50

Process Comparison between Au and CuPd

Visual criteria		Gold wire	CuPd wire	Specification
		8L SOIC	8L SOIC	
Ball Size (Sampling size 32ea)	Min(g)	2.50	2.58	2.0 - 3.4 mil
	Max(g)	2.60	2.75	
	Average(g)	2.59	2.67	
Ball Thickness (Sampling size 32ea)	Min(g)	0.50	0.50	0.3 -1.5 mil
	Max(g)	0.58	0.57	
	Average(g)	0.54	0.55	
Ball shear (Sampling size 32ea)	Min(g)	32.40	30.80	18g min.
	Max(g)	40.10	42.40	
	Average(g)	36.53	35.92	
	SD	2.33	2.76	
	Cpk	2.12	2.17	
Wire Pull Test (Sampling size 32ea)	Min(g)	8.55	11.70	4g min.
	Max(g)	11.55	16.80	
	Average(g)	9.23	15.33	
	SD	0.53	1.31	
	Cpk	3.29	2.88	
Stitch Pull Test (Sampling size 32ea)	Min(g)	5.00	5.60	4g min.
	Max(g)	5.95	8.00	
	Average(g)	5.60	7.38	
	SD	0.25	0.53	
	Cpk	2.15	2.12	



Cross section

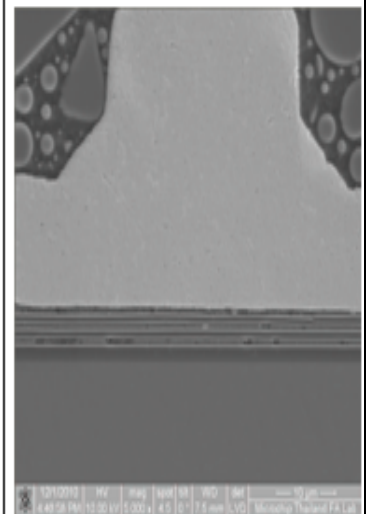
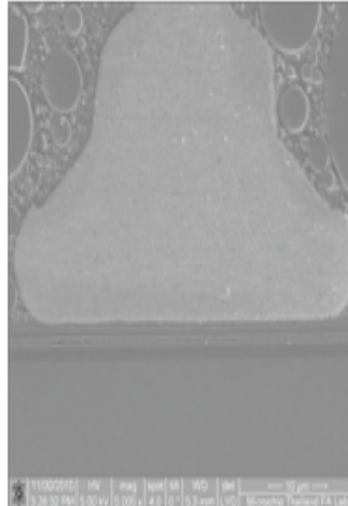
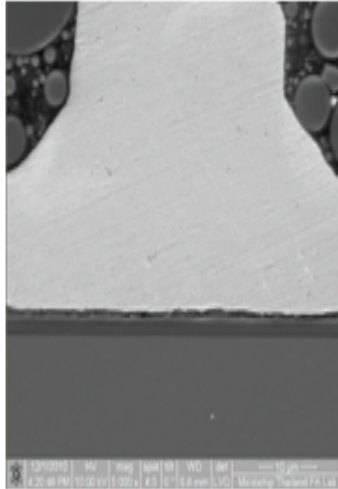
77K technology

150K technology

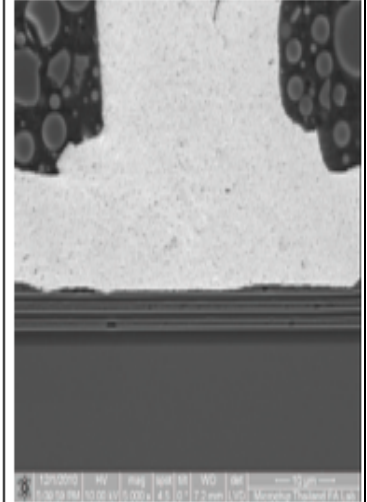
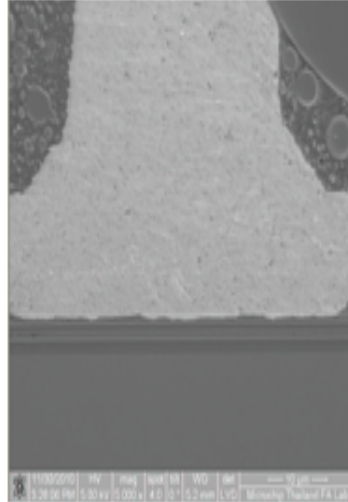
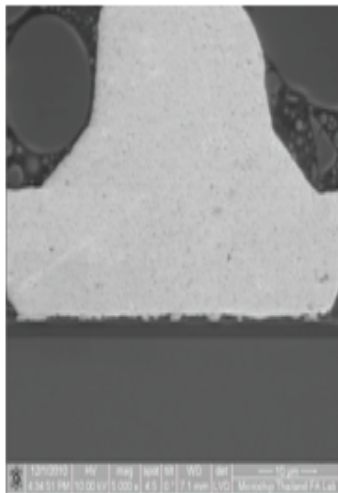
160K technology

Wire

CuPd 1.0 mil



Au 1.0 mil



Reliability Evaluation

CN	REL No.	MASK	PKG	Mov	Prec	Bake175 1000hr	PCT	HAST	TC1000
BC100803	<u>E10045-03</u>	D5AB2	8L PDIP	MTAH10101844.000	.	0.50	0.82	0.82	0.82
BC100803	<u>E10045-02</u>	D5AB2	8L PDIP	MTAH10101836.000	.	0.50	0.82	0.82	0.82
BC100803	<u>E10045-01</u>	D5AB2	8L PDIP	MTAH10101706.000	.	0.50	0.82	0.82	0.82
BC101895	<u>E10088-01</u>	DEBU4	8L SOIC	MTAH11200945.000	0.806	0.50	0.82	0.82	0.82
BC101895	<u>E10088-02</u>	C5AE4	8L SOIC	MTAH11201562.000	0.806	0.50	0.82	0.82	0.82
BC101895	<u>E10088-03</u>	DECY4	8L SOIC	MTAH11201529.000	0.806	0.50	0.82	0.82	0.82
BC101884	<u>E10092-01</u>	C5AZ1	8L SOIC	MTAH12001554.000	0.806	0.50	0.82	0.82	0.82
BC101884	<u>E10092-02</u>	C5AZ1	8L SOIC	MTAH12001894.000	0.806	0.50	0.82	0.82	0.82
BC101884	<u>E10092-03</u>	C5AZ1	8L SOIC	MTAH12001925.000	0.806	0.50	0.82	0.82	0.82
BC101883	<u>E10093-01</u>	DE024	8L SOIC	MTAH12001553.000	0.806	0.50	0.82	0.82	0.82
BC101883	<u>E10093-02</u>	DE024	8L SOIC	MTAH12001831.000	0.806	0.50	0.82	0.82	0.82
BC101883	<u>E10093-03</u>	DE024	8L SOIC	MTAH12001926.000	0.806	0.50	0.82	0.82	0.82
BC101775	<u>E10095-03</u>	C5BM5	6L SOT	MTAH112102259.000	0.806	0.50	0.82	0.82	0.82
BC101775	<u>E10095-02</u>	C5BM5	6L SOT	MTAH112102536.000	0.806	0.50	0.82	0.82	0.82
BC101775	<u>E10095-01</u>	C5BM5	6L SOT	MTAH112102537.000	0.806	0.50	0.82	0.82	0.82
BC101773	<u>E10097-01</u>	DEBU1	8LMSOP	MTAH112103232.000	0.806	0.50	0.82	0.82	0.82
BC101773	<u>E10097-02</u>	DEBU1	8LMSOP	MTAH112103235.000	0.806	0.50	0.82	0.82	0.82
BC101773	<u>E10097-03</u>	DEBU1	8LMSOP	MTAH112102710.000	0.806	0.50	0.82	0.82	0.82
BC101774	<u>E10099-01</u>	ABAA7	14L SOIC	MTAH112102260.000	0.806	0.50	0.82	0.82	0.82
BC101774	<u>E10099-02</u>	ABAA7	14L SOIC	MTAH112102462.000	0.806	0.50	0.82	0.82	0.82
BC101774	<u>E10099-03</u>	ABAA7	14L SOIC	MTAH112102518.000	0.806	0.50	0.82	0.82	0.82

PCN_CYER-02YIAF431
CATALOG_PART_NBR
11AA010-I/MS
11AA010-I/P
11AA010-I/SN
11AA010T-I/MS
11AA010T-I/SN
11AA010T-I/TT
11AA020-I/MS
11AA020-I/P
11AA020-I/SN
11AA020T-I/MS
11AA020T-I/SN
11AA020T-I/TT
11AA02E48-I/SN
11AA02E48T-I/SN
11AA02E48T-I/TT
11AA040-I/MS
11AA040-I/P
11AA040-I/SN
11AA040T-I/MS
11AA040T-I/SN
11AA040T-I/TT
11AA080-I/MS
11AA080-I/P
11AA080-I/SN
11AA080T-I/MS
11AA080T-I/SN
11AA080T-I/TT
11AA160-I/MS
11AA160-I/P
11AA160-I/SN
11AA160T-I/MS
11AA160T-I/SN
11AA160T-I/TT
11LC010-E/MS
11LC010-E/P
11LC010-E/SN
11LC010-I/MS
11LC010-I/P
11LC010-I/SN
11LC010T-E/MS
11LC010T-E/SN
11LC010T-E/TT
11LC010T-I/MS
11LC010T-I/SN
11LC010T-I/TT
11LC020-E/MS
11LC020-E/P
11LC020-E/SN
11LC020-I/MS
11LC020-I/P

11LC020-I/SN
11LC020T-E/MS
11LC020T-E/SN
11LC020T-E/TT
11LC020T-I/MS
11LC020T-I/SN
11LC020T-I/TT
11LC040-E/MS
11LC040-E/P
11LC040-E/SN
11LC040-I/MS
11LC040-I/P
11LC040-I/SN
11LC040T-E/MS
11LC040T-E/SN
11LC040T-E/TT
11LC040T-I/MS
11LC040T-I/SN
11LC040T-I/TT
11LC080-E/MS
11LC080-E/P
11LC080-E/SN
11LC080-I/MS
11LC080-I/P
11LC080-I/SN
11LC080T-E/MS
11LC080T-E/SN
11LC080T-E/TT
11LC080T-I/MS
11LC080T-I/SN
11LC080T-I/TT
11LC160-E/MS
11LC160-E/P
11LC160-E/SN
11LC160-I/MS
11LC160-I/P
11LC160-I/SN
11LC160T-E/MS
11LC160T-E/SN
11LC160T-E/TT
11LC160T-I/MS
11LC160T-I/SN
11LC160T-I/TT
23A256-I/P
23A256-I/SN
23A256T-I/SN
23A640-I/P
23A640-I/SN
23A640T-I/SN
23K256-E/P
23K256-E/SN
23K256-I/P

23K256-I/SN
23K256T-E/SN
23K256T-I/SN
23K640-E/P
23K640-E/SN
23K640-I/P
23K640-I/SN
23K640T-E/SN
23K640T-I/SN
24AA00/P
24AA00/SN
24AA00-I/P
24AA00-I/SN
24AA00T/OT
24AA00T/SN
24AA00T-I/OT
24AA00T-I/OTVAO
24AA00T-I/SN
24AA00T-I/SNB22
24AA01/SN
24AA014H-I/MS
24AA014H-I/P
24AA014H-I/SN
24AA014HT-I/MS
24AA014HT-I/SN
24AA014-I/MS
24AA014-I/P
24AA014-I/SN
24AA014T-I/MS
24AA014T-I/OT
24AA014T-I/SN
24AA01H-I/MS
24AA01H-I/P
24AA01H-I/SN
24AA01HT-I/MS
24AA01HT-I/OT
24AA01HT-I/SN
24AA01-I/MS
24AA01-I/P
24AA01-I/SN
24AA01-I/SN15KB21
24AA01T/SN
24AA01T-I/MS
24AA01T-I/OT
24AA01T-I/OT101
24AA01T-I/OTB31
24AA01T-I/SN
24AA01T-I/SN15KB21
24AA01T-I/SN15KVAO
24AA01T-I/SN16KVAO
24AA02/P
24AA02/SN

24AA024H-I/MS
24AA024H-I/P
24AA024H-I/SN
24AA024HT-I/MS
24AA024HT-I/SN
24AA024-I/MS
24AA024-I/P
24AA024-I/SN
24AA024T-I/MS
24AA024T-I/SN
24AA025E48-I/SN
24AA025E48T-I/OT
24AA025E48T-I/SN
24AA025-I/MS
24AA025-I/P
24AA025-I/SN
24AA025T-I/MS
24AA025T-I/OT
24AA025T-I/SN
24AA02E48-I/SN
24AA02E48T-I/OT
24AA02E48T-I/SN
24AA02H-I/MS
24AA02H-I/P
24AA02H-I/SN
24AA02HT-I/MS
24AA02HT-I/OT
24AA02HT-I/SN
24AA02-I/MS
24AA02-I/MSB31
24AA02-I/P
24AA02-I/SN
24AA02T/SN
24AA02T-I/MS
24AA02T-I/MSB31
24AA02T-I/OT
24AA02T-I/OT103
24AA02T-I/OT16KVAO
24AA02T-I/SN
24AA02T-I/SN15KV03
24AA04/P
24AA04/SN
24AA04H-I/MS
24AA04H-I/P
24AA04H-I/SN
24AA04HT-I/MS
24AA04HT-I/OT
24AA04HT-I/SN
24AA04-I/MS
24AA04-I/P
24AA04-I/SN
24AA04-I/SN15KV02

24AA04T/SN
24AA04T-I/MS
24AA04T-I/OT
24AA04T-I/OT103
24AA04T-I/OTB22
24AA04T-I/OTB26
24AA04T-I/SN
24AA04T-I/SN15KV02
24AA04T-I/SN15KV04
24AA04T-I/SN15KVAO
24AA04T-I/SNB24
24AA08/P
24AA08/SN
24AA08H-I/MS
24AA08H-I/P
24AA08H-I/SN
24AA08HT-I/MS
24AA08HT-I/OT
24AA08HT-I/SN
24AA08-I/MS
24AA08-I/P
24AA08-I/SN
24AA08T/SN
24AA08T-I/MS
24AA08T-I/OT
24AA08T-I/OT15KV01
24AA08T-I/OT15KVAO
24AA08T-I/OT16KV06
24AA08T-I/OTB22
24AA08T-I/SN
24AA128-I/MS
24AA128-I/P
24AA128-I/SM
24AA128-I/SN
24AA128T-I/MS
24AA128T-I/SM
24AA128T-I/SMG
24AA128T-I/SN
24AA128T-I/SN15KV08
24AA16/P
24AA16H-I/MS
24AA16H-I/P
24AA16H-I/SN
24AA16HT-I/MS
24AA16HT-I/OT
24AA16HT-I/SN
24AA16-I/MS
24AA16-I/P
24AA16-I/SN
24AA16-I/SNB22
24AA16T-I/MS
24AA16T-I/OT

24AA16T-I/SN
24AA16T-I/SN15KVAO
24AA16T-I/SNB22
24AA256/SM
24AA256-I/MS
24AA256-I/MSB31
24AA256-I/P
24AA256-I/SM
24AA256-I/SN
24AA256-I/SNRVE
24AA256T/SM
24AA256T-I/MS
24AA256T-I/SM
24AA256T-I/SMG
24AA256T-I/SN
24AA256T-I/SN15KV04
24AA256T-I/SNRVE
24AA32A/SM
24AA32AF-I/MS
24AA32AF-I/P
24AA32AF-I/SN
24AA32AFT-I/MS
24AA32AFT-I/OT
24AA32AFT-I/SN
24AA32A-I/MS
24AA32A-I/P
24AA32A-I/SM
24AA32A-I/SMG
24AA32A-I/SN
24AA32A-I/SN16KVAO
24AA32AT/SM
24AA32AT-I/MS
24AA32AT-I/OT
24AA32AT-I/SM
24AA32AT-I/SN
24AA32AT-I/SN16KVAO
24AA512-I/P
24AA512-I/SM
24AA512-I/SMG
24AA512-I/SMRVE
24AA512-I/SN
24AA512T-I/SM
24AA512T-I/SMRVE
24AA512T-I/SN
24AA515-I/P
24AA515-I/SM
24AA515T-I/SM
24AA52-I/MS
24AA52-I/P
24AA52-I/SN
24AA52T-I/MS
24AA52T-I/SN

24AA64/P
24AA64/PRVA
24AA64/SN
24AA64F-I/MS
24AA64F-I/P
24AA64F-I/SN
24AA64FT-I/MS
24AA64FT-I/OT
24AA64FT-I/SN
24AA64-I/MS
24AA64-I/P
24AA64-I/SM
24AA64-I/SN
24AA64-I/SN101
24AA64T/SN
24AA64T-I/MS
24AA64T-I/OT
24AA64T-I/SM
24AA64T-I/SN
24AA64T-I/SN101
24AA65/P
24AA65/SM
24C00/P
24C00/SN
24C00-E/P
24C00-E/SN
24C00-I/P
24C00-I/SN
24C00T/OT
24C00T/SN
24C00T-E/OT
24C00T-E/OTC43
24C00T-E/OTV01
24C00T-I/OT
24C00T-I/OTVAO
24C00T-I/SN
24C01C/P
24C01C/SN
24C01C-E/MS
24C01C-E/P
24C01C-E/SN
24C01C-I/MS
24C01C-I/P
24C01C-I/P12KVAO
24C01C-I/SN
24C01C-I/SN16KVAO
24C01CT/SN
24C01CT-E/MS
24C01CT-E/OT
24C01CT-E/SN
24C01CT-E/SN12KV02
24C01CT-E/SN12KVAO

24C01CT-I/MS
24C01CT-I/OT
24C01CT-I/SN
24C01CT-I/SN12KVAO
24C01CT-I/SN16KVAO
24C02C/P
24C02C/SN
24C02C-E/MS
24C02C-E/P
24C02C-E/SN
24C02C-E/SN12KA23
24C02C-I/MS
24C02C-I/P
24C02C-I/PNR
24C02C-I/SN
24C02CT/SN
24C02CT-E/MS
24C02CT-E/SN
24C02CT-E/SN12KA23
24C02CT-I/MS
24C02CT-I/SN
24C02CT-I/SN12KVAO
24C08BT-E/SNRVBVAO
24C65/P
24C65/SM
24C65-I/P
24C65-I/SM
24C65T/SM
24C65T-I/SM
24C65T-I/SMG
24FC128-I/MS
24FC128-I/P
24FC128-I/SM
24FC128-I/SN
24FC128-I/SNRVE
24FC128T-I/MS
24FC128T-I/SM
24FC128T-I/SN
24FC128T-I/SNRVE
24FC256-I/MS
24FC256-I/P
24FC256-I/SM
24FC256-I/SN
24FC256T-I/MS
24FC256T-I/SM
24FC256T-I/SN
24FC512-I/P
24FC512-I/SM
24FC512-I/SN
24FC512T-I/SM
24FC512T-I/SN
24FC515-I/P

24FC515-I/SM
24FC515T-I/SM
24FC64-I/MS
24FC64-I/P
24FC64-I/SM
24FC64-I/SN
24FC64T-I/MS
24FC64T-I/SM
24FC64T-I/SN
24LC00/P
24LC00/SN
24LC00-I/P
24LC00-I/PVAO
24LC00-I/SN
24LC00T/OT
24LC00T/SN
24LC00T-I/OT
24LC00T-I/OTA31
24LC00T-I/OTV02
24LC00T-I/SN
24LC00T-I/SNA23
24LC014H-E/MS
24LC014H-E/P
24LC014H-E/SN
24LC014H-I/MS
24LC014H-I/P
24LC014H-I/SN
24LC014HT-E/MS
24LC014HT-E/SN
24LC014HT-I/MS
24LC014HT-I/SN
24LC014-I/MS
24LC014-I/P
24LC014-I/SN
24LC014T-E/MS
24LC014T-I/MS
24LC014T-I/OT
24LC014T-I/SN
24LC01B/P
24LC01B/SN
24LC01B/SN12KVAO
24LC01B-E/MS
24LC01B-E/P
24LC01B-E/SN
24LC01B-H/SN12KV04
24LC01B-H/SNG12KV01
24LC01BH-E/MS
24LC01BH-E/P
24LC01BH-E/SN
24LC01BH-I/MS
24LC01BH-I/P
24LC01BH-I/SN

24LC01BHT-E/MS
24LC01BHT-E/OT
24LC01BHT-E/SN
24LC01BHT-I/MS
24LC01BHT-I/OT
24LC01BHT-I/SN
24LC01B-I/MS
24LC01B-I/P
24LC01B-I/SN
24LC01B-I/SN15KVAO
24LC01B-I/SNG12KVAO
24LC01BT/OT
24LC01BT/SN
24LC01BT/SN12KVAO
24LC01BT-E/MS
24LC01BT-E/OT
24LC01BT-E/OT12KV05
24LC01BT-E/SN
24LC01BT-E/SN16KV02
24LC01BT-H/SN12KV04
24LC01BT-H/SNG12KV01
24LC01BT-I/MS
24LC01BT-I/OT
24LC01BT-I/OT100
24LC01BT-I/OT105
24LC01BT-I/OT15KV02
24LC01BT-I/OTA24
24LC01BT-I/OTA35
24LC01BT-I/OTA36
24LC01BT-I/OTG12KVAO
24LC01BT-I/OTG15KVAO
24LC01BT-I/OTRVE
24LC01BT-I/OTV02
24LC01BT-I/OTVAO
24LC01BT-I/SN
24LC01BT-I/SN15KVAO
24LC01BT-I/SN16KV01
24LC01BT-I/SNA21
24LC01BT-I/SNA23
24LC01BT-I/SNG12KVAO
24LC01BT-I/SNRVE
24LC01BT-I/SNVAO
24LC024/P
24LC024/SN
24LC024/SNA21
24LC024-E/MS
24LC024-E/P
24LC024-E/SN
24LC024H-E/MS
24LC024H-E/P
24LC024H-E/SN
24LC024H-I/MS

24LC024H-I/P
24LC024H-I/SN
24LC024HT-E/MS
24LC024HT-E/SN
24LC024HT-I/MS
24LC024HT-I/SN
24LC024-I/MS
24LC024-I/P
24LC024-I/SN
24LC024T/SN
24LC024T/SNA21
24LC024T-E/MS
24LC024T-E/SN
24LC024T-I/MS
24LC024T-I/SN
24LC024T-I/SN12KV01
24LC024T-I/SN16KV02
24LC024T-I/SN16KV03
24LC025/P
24LC025/SN
24LC025-E/MS
24LC025-E/P
24LC025-E/SN
24LC025-I/MS
24LC025-I/P
24LC025-I/SN
24LC025T/SN
24LC025T-E/MS
24LC025T-E/OT
24LC025T-E/SN
24LC025T-I/MS
24LC025T-I/OT
24LC025T-I/SN
24LC02B/P
24LC02B/SN
24LC02B-E/MS
24LC02B-E/P
24LC02B-E/SN
24LC02B-E/SN15KV01
24LC02BH-E/MS
24LC02BH-E/P
24LC02BH-E/SN
24LC02BH-I/MS
24LC02BH-I/P
24LC02BH-I/SN
24LC02BHT-E/MS
24LC02BHT-E/OT
24LC02BHT-E/SN
24LC02BHT-I/MS
24LC02BHT-I/OT
24LC02BHT-I/SN
24LC02B-I/MS

24LC02B-I/P
24LC02B-I/PNR
24LC02B-I/SN
24LC02B-I/SNA32
24LC02B-I/SNG15KVAO
24LC02BT/SN
24LC02BT/SN15KVAO
24LC02BT/SNA31
24LC02BT-E/MS
24LC02BT-E/OT
24LC02BT-E/OT16KVAO
24LC02BT-E/SN
24LC02BT-E/SN15KV01
24LC02BT-E/SN15KV04
24LC02BT-E/SN16KV03
24LC02BT-I/MS
24LC02BT-I/OT
24LC02BT-I/OT15KVAO
24LC02BT-I/OTA31
24LC02BT-I/SN
24LC02BT-I/SN104
24LC02BT-I/SN15KVAO
24LC02BT-I/SN16KV02
24LC02BT-I/SNA32
24LC02BT-I/SNG15KVAO
24LC02BT-I/SNVAO
24LC04B/P
24LC04B/SN
24LC04B-E/MS
24LC04B-E/P
24LC04B-E/SN
24LC04B-E/SN15KVAO
24LC04BH-E/MS
24LC04BH-E/P
24LC04BH-E/SN
24LC04BH-I/MS
24LC04BH-I/P
24LC04BH-I/SN
24LC04BHT-E/MS
24LC04BHT-E/OT
24LC04BHT-E/SN
24LC04BHT-I/MS
24LC04BHT-I/OT
24LC04BHT-I/SN
24LC04B-I/MS
24LC04B-I/P
24LC04B-I/PNR
24LC04B-I/SN
24LC04B-I/SN101
24LC04B-I/SN15KVAO
24LC04B-I/SN16KVAO
24LC04BT/SN

24LC04BT/SNA31
24LC04BT-E/MS
24LC04BT-E/OT
24LC04BT-E/OT15KV03
24LC04BT-E/SN
24LC04BT-E/SN12KV01
24LC04BT-E/SN15KV03
24LC04BT-E/SN15KV06
24LC04BT-E/SN15KVAO
24LC04BT-E/SNVAO
24LC04BT-I/MS
24LC04BT-I/OT
24LC04BT-I/SN
24LC04BT-I/SN101
24LC04BT-I/SN15KV01
24LC04BT-I/SN15KV05
24LC04BT-I/SN15KVAO
24LC04BT-I/SN16KV01
24LC04BT-I/SN16KV02
24LC04BT-I/SN16KVAO
24LC04BT-I/SNA29
24LC04BT-I/SNRVC
24LC04BT-I/SNV02
24LC04BT-I/SNVAO
24LC08B/P
24LC08B/SN
24LC08B-E/MS
24LC08B-E/P
24LC08B-E/SN
24LC08B-E/SN16KVAO
24LC08BH-E/MS
24LC08BH-E/P
24LC08BH-E/SN
24LC08BH-I/MS
24LC08BH-I/P
24LC08BH-I/SN
24LC08BHT-E/MS
24LC08BHT-E/OT
24LC08BHT-E/SN
24LC08BHT-I/MS
24LC08BHT-I/OT
24LC08BHT-I/SN
24LC08B-I/MS
24LC08B-I/MS16KV07
24LC08B-I/P
24LC08B-I/PNR
24LC08B-I/SN
24LC08B-I/SNA27
24LC08B-I/SNRVE
24LC08BT/SN
24LC08BT/SNRVE
24LC08BT-E/MS

24LC08BT-E/OT
24LC08BT-E/OT15KV04
24LC08BT-E/OT15KVAO
24LC08BT-E/OT16KV01
24LC08BT-E/OT16KV08
24LC08BT-E/OT16KVAO
24LC08BT-E/SN
24LC08BT-E/SN15KVAO
24LC08BT-E/SN16KV03
24LC08BT-E/SN16KVAO
24LC08BT-I/MS
24LC08BT-I/MS16KV07
24LC08BT-I/OT
24LC08BT-I/OT15KV02
24LC08BT-I/OT15KV03
24LC08BT-I/OT15KVAO
24LC08BT-I/OT16KV01
24LC08BT-I/SN
24LC08BT-I/SN15KA22
24LC08BT-I/SN15KVAO
24LC08BT-I/SN16KV02
24LC08BT-I/SN16KV04
24LC08BT-I/SN16KV05
24LC08BT-I/SNA23
24LC08BT-I/SNA27
24LC08BT-I/SNRVE
24LC1025-E/SM
24LC1025T-E/SM
24LC128-E/MS
24LC128-E/P
24LC128-E/SM
24LC128-E/SN
24LC128-E/SN15KV04
24LC128-E/SN15KV09
24LC128-E/SN15KVAO
24LC128-I/MS
24LC128-I/P
24LC128-I/SM
24LC128-I/SMG
24LC128-I/SN
24LC128-I/SNA31
24LC128-I/SNRVE
24LC128T-E/MS
24LC128T-E/SM
24LC128T-E/SN
24LC128T-E/SN15KV04
24LC128T-E/SN15KV05
24LC128T-E/SN15KV06
24LC128T-E/SN15KV07
24LC128T-E/SN15KV09
24LC128T-E/SN15KVAO
24LC128T-I/MS

24LC128T-I/SM
24LC128T-I/SMG
24LC128T-I/SN
24LC128T-I/SN15KA21
24LC128T-I/SN15KV01
24LC128T-I/SN15KV02
24LC128T-I/SN15KV03
24LC128T-I/SN15KVAO
24LC128T-I/SNA31
24LC128T-I/SNRVE
24LC16B/P
24LC16B/SN
24LC16B-E/MS
24LC16B-E/P
24LC16B-E/SN
24LC16B-E/SN15KVAO
24LC16B-E/SNA26
24LC16BH-E/MS
24LC16BH-E/P
24LC16BH-E/SN
24LC16BH-I/MS
24LC16BH-I/P
24LC16BH-I/SN
24LC16BHT-E/MS
24LC16BHT-E/OT
24LC16BHT-E/SN
24LC16BHT-I/MS
24LC16BHT-I/OT
24LC16BHT-I/SN
24LC16B-I/MS
24LC16B-I/P
24LC16B-I/PNR
24LC16B-I/SN
24LC16B-I/SN15KVAO
24LC16B-I/SN16KVAO
24LC16B-M/SN
24LC16BT/SN
24LC16BT/SNA31
24LC16BT/SNRVE
24LC16BT-E/MS
24LC16BT-E/OT
24LC16BT-E/OT16KVAO
24LC16BT-E/SN
24LC16BT-E/SN15KV03
24LC16BT-E/SN15KV06
24LC16BT-E/SN15KVAO
24LC16BT-E/SN16KV03
24LC16BT-E/SNA26
24LC16BT-I/MS
24LC16BT-I/OT
24LC16BT-I/OT047
24LC16BT-I/OT15KV11

24LC16BT-I/OT16KV01
24LC16BT-I/OTG15KV04
24LC16BT-I/OTG15KV05
24LC16BT-I/SN
24LC16BT-I/SN15KV01
24LC16BT-I/SN15KV02
24LC16BT-I/SN15KV08
24LC16BT-I/SN15KV09
24LC16BT-I/SN15KVAO
24LC16BT-I/SN16KV02
24LC16BT-I/SN16KVAO
24LC16BT-I/SNRVE
24LC16BT-M/SN
24LC21/P
24LC21/SN
24LC21A/P
24LC21A/SN
24LC21A-I/P
24LC21A-I/SN
24LC21A-I/SN100
24LC21AT/SN
24LC21AT-I/SN
24LC21AT-I/SN100
24LC21-I/P
24LC21-I/SN
24LC21T/SN
24LC21T-I/SN
24LC22A-I/P
24LC22A-I/SN
24LC22AT-I/SN
24LC256-E/MS
24LC256-E/P
24LC256-E/SM
24LC256-E/SN
24LC256-E/SN15KVAO
24LC256-I/MS
24LC256-I/P
24LC256-I/P15KVAO
24LC256-I/PRVE
24LC256-I/SM
24LC256-I/SM15KVAO
24LC256-I/SMRVE
24LC256-I/SN
24LC256-I/SN15KVAO
24LC256-I/SNRVE
24LC256T-E/MS
24LC256T-E/SM
24LC256T-E/SN
24LC256T-E/SN15KV02
24LC256T-E/SN15KV03
24LC256T-E/SN15KV05
24LC256T-E/SN15KVAO

24LC256T-I/MS
24LC256T-I/SM
24LC256T-I/SM15KVAO
24LC256T-I/SMG
24LC256T-I/SMRVE
24LC256T-I/SN
24LC256T-I/SN15KV01
24LC256T-I/SN15KVAO
24LC256T-I/SN16KV01
24LC256T-I/SN16KVAO
24LC256T-I/SNRVE
24LC32A/P
24LC32A/SM
24LC32A/SN
24LC32A-E/MS
24LC32A-E/P
24LC32A-E/SM
24LC32A-E/SN
24LC32A-E/SN15KVAO
24LC32A-E/SN16KVAO
24LC32AF-E/MS
24LC32AF-E/P
24LC32AF-E/SN
24LC32AF-I/MS
24LC32AF-I/P
24LC32AF-I/SN
24LC32AFT-E/MS
24LC32AFT-E/OT
24LC32AFT-E/SN
24LC32AFT-I/MS
24LC32AFT-I/OT
24LC32AFT-I/SN
24LC32A-I/MS
24LC32A-I/P
24LC32A-I/SM
24LC32A-I/SN
24LC32A-I/SN15KV01
24LC32A-I/SN15KVAO
24LC32A-I/SN16KVAO
24LC32A-I/SNA27
24LC32A-I/SNA31
24LC32A-I/SNRVE
24LC32AT/SM
24LC32AT/SN
24LC32AT-E/MS
24LC32AT-E/OT
24LC32AT-E/OT16KVAO
24LC32AT-E/SM
24LC32AT-E/SN
24LC32AT-E/SN15KV03
24LC32AT-E/SN15KVAO
24LC32AT-E/SN16KV02

24LC32AT-E/SN16KVAO
24LC32AT-I/MS
24LC32AT-I/OT
24LC32AT-I/OT16KV01
24LC32AT-I/SM
24LC32AT-I/SMG
24LC32AT-I/SN
24LC32AT-I/SN15KV01
24LC32AT-I/SN15KV02
24LC32AT-I/SN15KV05
24LC32AT-I/SN15KVAO
24LC32AT-I/SN16KVAO
24LC32AT-I/SNA23
24LC32AT-I/SNA27
24LC32AT-I/SNA31
24LC32AT-I/SNRVE
24LC512-E/P
24LC512-E/SM
24LC512-E/SM16KV01
24LC512-E/SM16KVAO
24LC512-I/P
24LC512-I/SM
24LC512-I/SM16KVAO
24LC512-I/SMG
24LC512-I/SMRVE
24LC512-I/SN
24LC512T-E/SM
24LC512T-E/SM16KV01
24LC512T-E/SM16KVAO
24LC512T-I/SM
24LC512T-I/SM16KV02
24LC512T-I/SM16KVAO
24LC512T-I/SMG
24LC512T-I/SMRVE
24LC512T-I/SN
24LC515-I/P
24LC515-I/SM
24LC515T-I/SM
24LC64/SN
24LC64-E/MS
24LC64-E/P
24LC64-E/SM
24LC64-E/SN
24LC64-E/SN15KV04
24LC64-E/SN16KVAO
24LC64F-E/MS
24LC64F-E/P
24LC64F-E/SN
24LC64F-I/MS
24LC64F-I/P
24LC64F-I/SN
24LC64FT-E/MS

24LC64FT-E/OT
24LC64FT-E/SN
24LC64FT-I/MS
24LC64FT-I/OT
24LC64FT-I/SN
24LC64-I/MS
24LC64-I/P
24LC64-I/SM
24LC64-I/SMG
24LC64-I/SMRVE
24LC64-I/SN
24LC64-I/SN100
24LC64-I/SN15KVAO
24LC64-I/SNA22
24LC64-I/SNG15KV02
24LC64-I/SNG15KVAO
24LC64-I/SNRVA
24LC64-I/SNRVE
24LC64T-E/MS
24LC64T-E/OT
24LC64T-E/SM
24LC64T-E/SM15KV03
24LC64T-E/SN
24LC64T-E/SN15KV04
24LC64T-E/SN16KVAO
24LC64T-E/SNA31
24LC64T-I/MS
24LC64T-I/OT
24LC64T-I/SM
24LC64T-I/SMG
24LC64T-I/SMRVE
24LC64T-I/SN
24LC64T-I/SN100
24LC64T-I/SN16KV05
24LC64T-I/SNA22
24LC64T-I/SNG15KV02
24LC64T-I/SNG15KVAO
24LC64T-I/SNRVA
24LC64T-I/SNRVE
24LC65/P
24LC65/SM
24LC65/SMG
24LC65-I/P
24LC65-I/SM
24LC65-I/SMG
24LC65T/SM
24LC65T/SMG
24LC65T-I/SM
24LC65T-I/SMG
24LC65T-I/SMVAO
24LCS21A/P
24LCS21A/SN

24LCS21A-I/P
24LCS21A-I/SN
24LCS21AT/SN
24LCS21AT-I/SN
24LCS22A-I/P
24LCS22A-I/SN
24LCS22AT-I/SN
24LCS52/SN
24LCS52/SNG12KVAO
24LCS52-I/MS
24LCS52-I/P
24LCS52-I/SN
24LCS52T/SN
24LCS52T/SNG12KVAO
24LCS52T-I/MS
24LCS52T-I/SN
24VL014/MS
24VL014/P
24VL014/SN
24VL014H/MS
24VL014H/P
24VL014H/SN
24VL014HT/MS
24VL014HT/SN
24VL014T/MS
24VL014T/OT
24VL014T/SN
24VL024/MS
24VL024/P
24VL024/SN
24VL024H/MS
24VL024H/P
24VL024H/SN
24VL024HT/MS
24VL024HT/SN
24VL024T/MS
24VL024T/SN
24VL025/MS
24VL025/P
24VL025/SN
24VL025T/MS
24VL025T/OT
24VL025T/SN
25AA010A-I/MS
25AA010A-I/P
25AA010A-I/SN
25AA010AT-I/MS
25AA010AT-I/OT
25AA010AT-I/SN
25AA020A-I/MS
25AA020A-I/P
25AA020A-I/SN

25AA020AT-I/MS
25AA020AT-I/OT
25AA020AT-I/SN
25AA02E48-I/SN
25AA02E48T-I/OT
25AA02E48T-I/SN
25AA040/P
25AA040A-I/MS
25AA040A-I/P
25AA040A-I/SN
25AA040AT-I/MS
25AA040AT-I/OT
25AA040AT-I/SN
25AA040-I/P
25AA040-I/SN
25AA040T-I/SN
25AA080/P
25AA080/SN
25AA080A-I/MS
25AA080A-I/MS15KVAO
25AA080A-I/P
25AA080A-I/SN
25AA080AT-I/MS
25AA080AT-I/MS15KV06
25AA080AT-I/MS15KVAO
25AA080AT-I/SN
25AA080B-I/MS
25AA080B-I/P
25AA080B-I/SN
25AA080BT-I/SN
25AA080BT-I/SNB21
25AA080C-I/MS
25AA080C-I/P
25AA080C-I/SN
25AA080CT-I/MS
25AA080CT-I/SN
25AA080D-I/MS
25AA080D-I/P
25AA080D-I/SN
25AA080DT-I/MS
25AA080DT-I/SN
25AA080-I/P
25AA080-I/SN
25AA080T/SN
25AA080T-I/SN
25AA1024-I/P
25AA1024-I/SM
25AA1024-I/SMB21
25AA1024T-I/SM
25AA1024T-I/SMB21
25AA128-I/P
25AA128-I/SM

25AA128-I/SN
25AA128T-I/SM
25AA128T-I/SN
25AA160/P
25AA160A-I/MS
25AA160A-I/P
25AA160A-I/SN
25AA160A-I/SN102
25AA160A-I/SN103
25AA160AT-I/MS
25AA160AT-I/SN
25AA160AT-I/SN102
25AA160AT-I/SN103
25AA160B-I/MS
25AA160B-I/P
25AA160B-I/SN
25AA160BT-I/SN
25AA160C-I/MS
25AA160C-I/P
25AA160C-I/SN
25AA160CT-I/MS
25AA160CT-I/SN
25AA160D-I/MS
25AA160D-I/P
25AA160D-I/SN
25AA160DT-I/MS
25AA160DT-I/SN
25AA160-I/P
25AA160-I/SN
25AA160-I/SNVAO
25AA160T-I/SN
25AA160T-I/SNVAO
25AA256-I/P
25AA256-I/SM
25AA256-I/SMG
25AA256-I/SN
25AA256T-I/SM
25AA256T-I/SN
25AA256T-I/SNB31
25AA320A-I/MS
25AA320A-I/P
25AA320A-I/SN
25AA320A-I/SNB22
25AA320AT-I/MS
25AA320AT-I/SN
25AA320AT-I/SNB22
25AA320-I/P
25AA320-I/SN
25AA320T-I/SN
25AA512-I/P
25AA512-I/SM
25AA512-I/SN

25AA512T-I/SM
25AA512T-I/SM16KV01
25AA512T-I/SN
25AA640A-E/MS
25AA640A-I/MS
25AA640A-I/MS16KVAO
25AA640A-I/P
25AA640A-I/SN
25AA640A-I/SNB22
25AA640AT-E/MS
25AA640AT-I/MS
25AA640AT-I/MS16KV08
25AA640AT-I/MS16KVAO
25AA640AT-I/SN
25AA640AT-I/SNB22
25AA640-I/P
25AA640-I/SN
25AA640T-I/SN
25C040/P
25C040/SN
25C040-E/P
25C040-E/SN
25C040-I/P
25C040-I/SN
25C040T/SN
25C040T-E/SN
25C040T-I/SN
25C040T-I/SNC24
25C040T-I/SNC25
25C040T-I/SNVAO
25C080/P
25C080/SN
25C080-E/SN
25C080-E/SNC23
25C080-I/P
25C080-I/SN
25C080T/SN
25C080T-E/SN
25C080T-E/SNC23
25C080T-I/SN
25C160/P
25C160/SN
25C160-E/P
25C160-E/SN
25C160-I/P
25C160-I/SN
25C160T/SN
25C160T-E/SN
25C160T-E/SNVAO
25C160T-I/SN
25C320/P
25C320/SN

25C320-E/SN
25C320-I/P
25C320-I/SN
25C320T/SN
25C320T-E/SN
25C320T-E/SN12KC22
25C320T-E/SN12KVAO
25C320T-I/SN
25C320T-I/SN12KVAO
25LC010A-E/MS
25LC010A-E/P
25LC010A-E/SN
25LC010A-E/SN16KVAO
25LC010A-H/SN
25LC010A-I/MS
25LC010A-I/P
25LC010A-I/SN
25LC010AT-E/MS
25LC010AT-E/OT
25LC010AT-E/SN
25LC010AT-E/SN16KV01
25LC010AT-E/SN16KV02
25LC010AT-E/SN16KVAO
25LC010AT-H/SN
25LC010AT-I/MS
25LC010AT-I/OT
25LC010AT-I/SN
25LC020A-E/MS
25LC020A-E/P
25LC020A-E/SN
25LC020A-E/SN16KVAO
25LC020A-H/SN
25LC020A-I/MS
25LC020A-I/P
25LC020A-I/SN
25LC020A-I/SN16KVAO
25LC020AT-E/MS
25LC020AT-E/OT
25LC020AT-E/SN
25LC020AT-E/SN16KV01
25LC020AT-E/SN16KVAO
25LC020AT-H/SN
25LC020AT-I/MS
25LC020AT-I/OT
25LC020AT-I/SN
25LC020AT-I/SN16KVAO
25LC040/P
25LC040/SN
25LC040A-E/MS
25LC040A-E/P
25LC040A-E/SN
25LC040A-E/SN16KVAO

25LC040A-H/SN
25LC040A-I/MS
25LC040A-I/P
25LC040A-I/SN
25LC040A-I/SN101
25LC040A-I/SN102
25LC040A-I/SN103
25LC040A-I/SN16KVAO
25LC040AT-E/MS
25LC040AT-E/OT
25LC040AT-E/OT16KV01
25LC040AT-E/OT16KV02
25LC040AT-E/OT16KVAO
25LC040AT-E/SN
25LC040AT-E/SN16KV01
25LC040AT-E/SN16KV02
25LC040AT-E/SN16KV03
25LC040AT-E/SN16KV04
25LC040AT-E/SN16KVAO
25LC040AT-H/SN
25LC040AT-I/MS
25LC040AT-I/OT
25LC040AT-I/SN
25LC040AT-I/SN101
25LC040AT-I/SN102
25LC040AT-I/SN103
25LC040AT-I/SN16KVAO
25LC040-E/SN
25LC040-E/SNA22
25LC040-E/SNVAO
25LC040-I/P
25LC040-I/SN
25LC040T/SN
25LC040T-E/SNA22
25LC040T-E/SNA26
25LC040T-E/SNV01
25LC040T-E/SNVAO
25LC040T-I/SN
25LC040T-I/SNV02
25LC040T-I/SNVAO
25LC080/P
25LC080/SN
25LC080A-E/MS
25LC080A-E/P
25LC080A-E/SN
25LC080A-E/SN15KV01
25LC080A-E/SN15KVAO
25LC080A-H/SN
25LC080A-H/SN15KV03
25LC080A-I/MS
25LC080A-I/P
25LC080A-I/SN

25LC080AT-E/MS
25LC080AT-E/MS15KV05
25LC080AT-E/SN
25LC080AT-E/SN15KV01
25LC080AT-E/SN15KV04
25LC080AT-E/SN15KV07
25LC080AT-E/SN15KVAO
25LC080AT-H/SN
25LC080AT-H/SN15KV03
25LC080AT-I/MS
25LC080AT-I/SN
25LC080B-E/MS
25LC080B-E/P
25LC080B-E/SN
25LC080B-E/SN15KVAO
25LC080B-E/SNG15KV01
25LC080B-I/MS
25LC080B-I/P
25LC080B-I/SN
25LC080B-I/SNG
25LC080B-I/SNG15KVAO
25LC080BT-E/SN
25LC080BT-E/SN15KV03
25LC080BT-E/SN15KV05
25LC080BT-E/SN15KVAO
25LC080BT-E/SNG15KV01
25LC080BT-I/MS
25LC080BT-I/MS15KV02
25LC080BT-I/SN15KV04
25LC080BT-I/SNG15KVAO
25LC080C-E/MS
25LC080C-E/P
25LC080C-E/SN
25LC080C-H/SN
25LC080C-I/MS
25LC080C-I/P
25LC080C-I/SN
25LC080CT-E/MS
25LC080CT-E/SN
25LC080CT-H/SN
25LC080CT-I/MS
25LC080CT-I/SN
25LC080D-E/MS
25LC080D-E/P
25LC080D-E/SN
25LC080D-H/SN
25LC080D-I/MS
25LC080D-I/P
25LC080D-I/SN
25LC080DT-E/MS
25LC080DT-E/SN
25LC080DT-H/SN

25LC080DT-I/MS
25LC080DT-I/SN
25LC080-I/P
25LC080-I/SN
25LC080T/SN
25LC080T-I/SN
25LC1024-E/P
25LC1024-E/SM
25LC1024-I/P
25LC1024-I/SM
25LC1024-I/SMA21
25LC1024T-E/SM
25LC1024T-E/SM16KV01
25LC1024T-E/SM16KVAO
25LC1024T-I/SM
25LC1024T-I/SM16KV02
25LC1024T-I/SMA21
25LC128-E/P
25LC128-E/SM
25LC128-E/SN
25LC128-E/SN16KVAO
25LC128-H/SN
25LC128-I/P
25LC128-I/SM
25LC128-I/SN
25LC128T-E/SM
25LC128T-E/SN
25LC128T-E/SN16KV01
25LC128T-E/SN16KV02
25LC128T-E/SN16KVAO
25LC128T-H/SN
25LC128T-I/SM
25LC128T-I/SN
25LC160/P
25LC160/SN
25LC160A-E/MS
25LC160A-E/P
25LC160A-E/SN
25LC160A-E/SN15KVAO
25LC160A-I/MS
25LC160A-I/P
25LC160A-I/SN
25LC160AT-E/MS
25LC160AT-E/SN
25LC160AT-E/SN15KV01
25LC160AT-E/SN15KVAO
25LC160AT-I/MS
25LC160AT-I/SN
25LC160B-E/MS
25LC160B-E/P
25LC160B-E/SN
25LC160B-E/SN15KV05

25LC160B-E/SNG
25LC160B-E/SNG15KVAO
25LC160B-I/MS
25LC160B-I/P
25LC160B-I/SN
25LC160B-I/SN15KVAO
25LC160B-I/SNG
25LC160BT-E/MS
25LC160BT-E/SN
25LC160BT-E/SN15KV05
25LC160BT-E/SN15KV06
25LC160BT-E/SN15KV07
25LC160BT-E/SN15KV09
25LC160BT-E/SN15KVAO
25LC160BT-E/SNG15KVAO
25LC160BT-I/MS
25LC160BT-I/SN
25LC160BT-I/SN15KVAO
25LC160BT-I/SNG
25LC160C-E/MS
25LC160C-E/P
25LC160C-E/SN
25LC160C-H/SN
25LC160C-I/MS
25LC160C-I/P
25LC160C-I/SN
25LC160CT-E/MS
25LC160CT-E/SN
25LC160CT-H/SN
25LC160CT-I/MS
25LC160CT-I/SN
25LC160D-E/MS
25LC160D-E/P
25LC160D-E/SN
25LC160D-E/SN16KVAO
25LC160D-H/SN
25LC160D-I/MS
25LC160D-I/P
25LC160D-I/SN
25LC160DT-E/MS
25LC160DT-E/SN
25LC160DT-E/SN16KV01
25LC160DT-E/SN16KV02
25LC160DT-E/SN16KVAO
25LC160DT-H/SN
25LC160DT-I/MS
25LC160DT-I/SN
25LC160-I/P
25LC160-I/SN
25LC160T/SN
25LC160T-I/SN
25LC256-E/P

25LC256-E/SM
25LC256-E/SN
25LC256-E/SN16KV09
25LC256-E/SN16KVAO
25LC256-H/SN
25LC256-I/P
25LC256-I/SM
25LC256-I/SN
25LC256T-E/SM
25LC256T-E/SM16KV01
25LC256T-E/SN
25LC256T-E/SN16KV02
25LC256T-E/SN16KV04
25LC256T-E/SN16KV05
25LC256T-E/SN16KV07
25LC256T-E/SN16KV09
25LC256T-E/SN16KVAO
25LC256T-H/SN
25LC256T-I/SM
25LC256T-I/SM16KV03
25LC256T-I/SN
25LC256T-I/SN16KV08
25LC320/P
25LC320/SN
25LC320A-E/MS
25LC320A-E/P
25LC320A-E/SN
25LC320A-E/SN16KVAO
25LC320A-H/SN
25LC320A-H/SN16KV02
25LC320A-H/SN16KVAO
25LC320A-I/MS
25LC320A-I/P
25LC320A-I/SN
25LC320AT-E/MS
25LC320AT-E/SN
25LC320AT-E/SN16KV01
25LC320AT-E/SN16KV04
25LC320AT-E/SN16KV05
25LC320AT-E/SN16KV07
25LC320AT-E/SN16KVAO
25LC320AT-H/SN
25LC320AT-H/SN16KV02
25LC320AT-H/SN16KV06
25LC320AT-H/SN16KVAO
25LC320AT-I/MS
25LC320AT-I/SN
25LC320-E/P
25LC320-E/SN
25LC320-E/SN12KVAO
25LC320-I/P
25LC320-I/SN

25LC320-I/SN12KVAO
25LC320T/SN
25LC320T-E/SN
25LC320T-E/SN12KV05
25LC320T-E/SN12KV06
25LC320T-E/SN12KVAO
25LC320T-I/SN
25LC320T-I/SN12KVAO
25LC512-E/P
25LC512-E/SM
25LC512-E/SN
25LC512-E/SN16KVAO
25LC512-I/P
25LC512-I/SM
25LC512-I/SN
25LC512T-E/SM
25LC512T-E/SN
25LC512T-E/SN16KVAO
25LC512T-I/SM
25LC512T-I/SN
25LC640A-E/MS
25LC640A-E/P
25LC640A-E/SN
25LC640A-E/SN16KVAO
25LC640A-H/SN
25LC640A-I/MS
25LC640A-I/P
25LC640A-I/SN
25LC640A-M/SN
25LC640AT-E/MS
25LC640AT-E/SN
25LC640AT-E/SN16KV03
25LC640AT-E/SN16KV04
25LC640AT-E/SN16KV05
25LC640AT-E/SN16KV09
25LC640AT-E/SN16KV12
25LC640AT-E/SN16KVAO
25LC640AT-H/SN
25LC640AT-I/MS
25LC640AT-I/SN
25LC640AT-I/SN16KV06
25LC640AT-M/SN
25LC640-E/P
25LC640-E/SN
25LC640-I/P
25LC640-I/SN
25LC640T-E/SN
25LC640T-E/SN12KV01
25LC640T-E/SN12KV05
25LC640T-E/SN12KV06
25LC640T-E/SNG12KVAO
25LC640T-E/SNV03

25LC640T-E/SNV04
25LC640T-I/SN
25LC640T-I/SNGVAO
34A47F-I/SN
34A47FT-I/SN
34A83GT-I/SN
34AA02-E/MS
34AA02-E/P
34AA02-E/SN
34AA02-I/MS
34AA02-I/P
34AA02-I/SN
34AA02T-E/MS
34AA02T-E/OT
34AA02T-E/SN
34AA02T-I/MS
34AA02T-I/OT
34AA02T-I/SN
34LC02-E/MS
34LC02-E/P
34LC02-E/SN
34LC02-I/MS
34LC02-I/P
34LC02-I/SN
34LC02T-E/MS
34LC02T-E/OT
34LC02T-E/SN
34LC02T-I/MS
34LC02T-I/OT
34LC02T-I/SN
34VL02/MS
34VL02/P
34VL02/SN
34VL02T/MS
34VL02T/OT
34VL02T/SN
93AA46/P
93AA46/SN
93AA46A-I/MS
93AA46A-I/P
93AA46A-I/SN
93AA46AT-I/MS
93AA46AT-I/OT
93AA46AT-I/SN
93AA46AX-I/SN
93AA46B-I/MS
93AA46B-I/P
93AA46B-I/SN
93AA46BT-I/MS
93AA46BT-I/OT
93AA46BT-I/SN
93AA46BX-I/SN

93AA46BXT-I/SN
93AA46C-I/MS
93AA46C-I/P
93AA46C-I/SN
93AA46CT-I/MS
93AA46CT-I/SN
93AA46CX-I/SN
93AA46CXT-I/SN
93AA46-I/SM
93AA46-I/SN
93AA46T/SN
93AA46T-I/SN
93AA56/P
93AA56/SN
93AA56A-I/MS
93AA56A-I/P
93AA56A-I/SN
93AA56AT-I/OT
93AA56AX-I/SN
93AA56B-I/MS
93AA56B-I/P
93AA56B-I/SN
93AA56BT-I/OT
93AA56BT-I/SN
93AA56BX-I/SN
93AA56C-I/MS
93AA56C-I/P
93AA56C-I/SN
93AA56CT-I/SN
93AA56CX-I/SN
93AA56-I/SN
93AA56T/SN
93AA56T-I/SN
93AA66/P
93AA66/SN
93AA66A-I/MS
93AA66A-I/P
93AA66A-I/SN
93AA66AT-I/OT
93AA66AT-I/SN
93AA66B-I/MS
93AA66B-I/P
93AA66B-I/SN
93AA66BT-I/OT
93AA66BT-I/SN
93AA66BX-I/SN
93AA66C-I/MS
93AA66C-I/P
93AA66C-I/SN
93AA66CT-I/SN
93AA66-I/P
93AA66-I/SN

93AA66T/SN
93AA66T-I/SN
93AA66T-I/SNH31
93AA66X/SN
93AA66XT/SN
93AA76/P
93AA76/SN
93AA76A-I/SN
93AA76AT-I/OT
93AA76AT-I/SN
93AA76B-I/SN
93AA76BT-I/OT
93AA76BT-I/SN
93AA76C-I/MS
93AA76C-I/P
93AA76C-I/SN
93AA76T/SN
93AA86/SN
93AA86A-I/SN
93AA86AT-I/OT
93AA86AT-I/SN
93AA86B-I/SN
93AA86BT-I/OT
93AA86BT-I/SN
93AA86C-I/MS
93AA86C-I/P
93AA86C-I/SN
93AA86CT-I/MS
93AA86CT-I/SN
93C46A-E/MS
93C46A-E/SN
93C46A-I/MS
93C46A-I/P
93C46A-I/SN
93C46A-I/SNRVA
93C46AT-E/MS
93C46AT-E/OT
93C46AT-I/OT
93C46AT-I/SN
93C46AX-I/SN
93C46B/P
93C46B/P15KVAO
93C46B/SN
93C46B-E/P
93C46B-E/SN
93C46B-E/SN15KVAO
93C46B-I/MS
93C46B-I/P
93C46B-I/PRVA
93C46B-I/SN
93C46BT/SN
93C46BT-E/OT

93C46BT-E/OTG15KVAO
93C46BT-E/SN
93C46BT-E/SN15KVAO
93C46BT-E/SNA21
93C46BT-E/SNVAO
93C46BT-I/MS
93C46BT-I/OT
93C46BT-I/SN
93C46BT-I/SNA22
93C46BT-I/SNRVA
93C46BT-I/SNVAO
93C46BX/SN
93C46BX-I/SN
93C46BXT/SN
93C46BXT-I/SN
93C46C-E/P
93C46C-E/SN
93C46C-I/MS
93C46C-I/P
93C46C-I/SN
93C46CT-E/SN
93C46CT-I/MS
93C46CT-I/SN
93C56A-E/P
93C56A-E/SN
93C56A-I/MS
93C56A-I/P
93C56A-I/SN
93C56AT-E/SN
93C56AT-E/SNA21
93C56AT-E/SNVAO
93C56AT-I/OT
93C56B-E/P
93C56B-E/SN
93C56B-I/P
93C56B-I/SN
93C56BT-E/OT
93C56BT-E/SN
93C56BT-I/OT
93C56BT-I/SN
93C56C-E/P
93C56C-I/MS
93C56C-I/P
93C56C-I/SN
93C56CT-I/SN
93C56-E/P
93C66A-E/P
93C66A-E/SN
93C66A-I/MS
93C66A-I/P
93C66A-I/SN
93C66AT-E/OT

93C66AT-E/OT15KVAO
93C66AT-E/OTG15KV01
93C66AT-E/SN
93C66AT-E/SNV26
93C66AT-I/OT
93C66B-E/MS
93C66B-E/P
93C66B-E/SN
93C66B-I/MS
93C66B-I/P
93C66B-I/SN
93C66BT-E/SN
93C66BT-E/SN8V01
93C66BT-I/OT
93C66BT-I/SN
93C66C-E/P
93C66C-I/MS
93C66C-I/P
93C66C-I/SN
93C66CT-I/SN
93C66-E/P
93C76AT-I/OT
93C76BT-E/OT
93C76BT-I/OT
93C76C-E/P
93C76C-E/SN
93C76C-I/MS
93C76C-I/P
93C76C-I/SN
93C76CT-E/SN
93C76CT-I/SN
93C76-E/P
93C76-E/SN
93C86AT-E/OT
93C86AT-I/OT
93C86BT-E/OT
93C86BT-I/OT
93C86C-E/P
93C86C-E/SN
93C86C-I/P
93C86C-I/SN
93C86CT-E/SN
93C86CT-I/SN
93C86-E/P
93C86-E/SN
93C86T-E/SN
93C86T-E/SN8V02
93C86T-E/SNV03
93C86T-E/SNVAO
93LC46/P
93LC46/SN
93LC46A/P

93LC46A/SN
93LC46A/SNRVA
93LC46A-E/MS
93LC46A-E/P
93LC46A-E/SN
93LC46A-E/SN15KVAO
93LC46A-I/MS
93LC46A-I/P
93LC46A-I/PA22
93LC46A-I/PG15KV01
93LC46A-I/SN
93LC46A-I/SN15KVAO
93LC46A-I/SNGVAO
93LC46A-I/SNVAO
93LC46AT/SN
93LC46AT-E/OT
93LC46AT-E/SN
93LC46AT-E/SN15KVAO
93LC46AT-I/MS
93LC46AT-I/OT
93LC46AT-I/OT15KV02
93LC46AT-I/OT15KVAO
93LC46AT-I/SN
93LC46AT-I/SN15K100
93LC46AT-I/SN15KVAO
93LC46AT-I/SNA21VAO
93LC46AT-I/SNA24
93LC46AT-I/SNA25
93LC46AT-I/SNA26
93LC46AT-I/SNGVAO
93LC46AT-I/SNRVA
93LC46AT-I/SNV26
93LC46AT-I/SNVAO
93LC46AX/SN
93LC46AX-E/SN
93LC46AX-I/SN
93LC46AXT-I/SN
93LC46B/P
93LC46B/PRVA
93LC46B/SN
93LC46B-E/MS
93LC46B-E/P
93LC46B-E/SN
93LC46B-I/MS
93LC46B-I/P
93LC46B-I/P15KVAO
93LC46B-I/PD2VAO
93LC46B-I/PG15KV01
93LC46B-I/PRVA
93LC46B-I/SN
93LC46B-I/SN15KA45
93LC46B-I/SN15KVAO

93LC46BT/SN
93LC46BT-E/OT
93LC46BT-E/SN
93LC46BT-I/MS
93LC46BT-I/OT
93LC46BT-I/OT101
93LC46BT-I/SN
93LC46BT-I/SN15KA45
93LC46BT-I/SN15KV02
93LC46BT-I/SN15KVAO
93LC46BT-I/SNA22VAO
93LC46BT-I/SNA37
93LC46BT-I/SND2VAO
93LC46BT-I/SND32
93LC46BT-I/SNRVA
93LC46BT-I/SNV26
93LC46BT-I/SNVAO
93LC46BX/SN
93LC46BX-E/SN
93LC46BX-I/SN
93LC46BXT/SN
93LC46BXT/SND2VAO
93LC46BXT-I/SN
93LC46BXT-I/SNE32
93LC46C-E/MS
93LC46C-E/P
93LC46C-E/SN
93LC46C-I/MS
93LC46C-I/P
93LC46C-I/SN
93LC46CT-I/MS
93LC46CT-I/SN
93LC46CT-I/SN15KV02
93LC46CT-I/SN15KVAO
93LC46CX-I/SN
93LC46CXT-I/SN
93LC46-I/P
93LC46-I/SN
93LC46T/SN
93LC46T-I/SN
93LC46X/SN
93LC46X-I/SN
93LC46XT/SN
93LC56/P
93LC56/SN
93LC56A/P
93LC56A/SN
93LC56A-E/P
93LC56A-E/SNE31
93LC56A-I/MS
93LC56A-I/P
93LC56A-I/P15KVAO

93LC56A-I/SN
93LC56A-I/SNE31
93LC56A-I/SNG15KVAO
93LC56A-I/SNGVAO
93LC56AT/SN
93LC56AT-E/OT15KVAO
93LC56AT-I/OT
93LC56AT-I/SN
93LC56AT-I/SNG15KVAO
93LC56AT-I/SNGVAO
93LC56AT-I/SNRVA
93LC56AT-I/SNV01
93LC56AT-I/SNVAO
93LC56AX-I/SN
93LC56B/P
93LC56B/PRVA
93LC56B/SN
93LC56B/SNRVA
93LC56B-E/MS
93LC56B-E/P
93LC56B-E/SN
93LC56B-I/MS
93LC56B-I/P
93LC56B-I/SN
93LC56B-I/SNG15KVAO
93LC56B-I/SNRVA
93LC56B-I/SNVAO
93LC56BT/SN
93LC56BT-E/OT
93LC56BT-E/SN
93LC56BT-I/MS
93LC56BT-I/OT
93LC56BT-I/SN
93LC56BT-I/SN15KV03
93LC56BT-I/SN15KVAO
93LC56BT-I/SNC22VAO
93LC56BT-I/SNG15KVAO
93LC56BT-I/SNRVA
93LC56BT-I/SNV26
93LC56BT-I/SNVAO
93LC56BX/SN
93LC56BX-E/SN
93LC56BX-I/SN
93LC56BXT/SN
93LC56BXT-I/SN
93LC56C-E/P
93LC56C-E/SN
93LC56C-I/MS
93LC56C-I/P
93LC56C-I/SN
93LC56CT-E/SN
93LC56CT-I/MS

93LC56CT-I/SN
93LC56CX-I/SN
93LC56-I/P
93LC56-I/SN
93LC56T/SN
93LC56T-I/SN
93LC56X/SN
93LC66/P
93LC66/SN
93LC66A/P
93LC66A/SN
93LC66A/SNRVA
93LC66A-E/SN
93LC66A-I/MS
93LC66A-I/P
93LC66A-I/PE31
93LC66A-I/SN
93LC66AT/SN
93LC66AT/SNRVA
93LC66AT-E/OT
93LC66AT-E/OT15KV01
93LC66AT-E/SN
93LC66AT-I/OT
93LC66AT-I/SN
93LC66AT-I/SN101
93LC66AT-I/SN15KV05
93LC66AT-I/SN15KVAO
93LC66AT-I/SNG102
93LC66AT-I/SNV01
93LC66AT-I/SNVAO
93LC66AX/SN
93LC66AX-I/SN
93LC66B/P
93LC66B/SM
93LC66B/SN
93LC66B-E/P
93LC66B-E/SN
93LC66B-E/SN15KVAO
93LC66B-I/MS
93LC66B-I/P
93LC66B-I/SM
93LC66B-I/SN
93LC66B-I/SN15K
93LC66B-I/SND22
93LC66BT/SN
93LC66BT-E/OT
93LC66BT-E/OT15KV10
93LC66BT-E/OT15KVAO
93LC66BT-E/SN
93LC66BT-E/SN15KVAO
93LC66BT-I/MS
93LC66BT-I/OT

93LC66BT-I/OT15KV04
93LC66BT-I/OT15KV07
93LC66BT-I/OT15KVAO
93LC66BT-I/SN
93LC66BT-I/SN15K
93LC66BT-I/SN15KV02
93LC66BT-I/SN15KVAO
93LC66BT-I/SNV26
93LC66BT-I/SNVAO
93LC66BX/SN
93LC66BX-E/SN
93LC66BX-I/SN
93LC66BXT-I/SN
93LC66C-E/P
93LC66C-E/SN
93LC66C-E/SN15KVAO
93LC66C-I/MS
93LC66C-I/P
93LC66C-I/PG15KV06
93LC66C-I/SN
93LC66C-I/SN15KV01
93LC66CT-E/SN
93LC66CT-E/SN15KV08
93LC66CT-E/SN15KV09
93LC66CT-E/SN15KVAO
93LC66CT-I/MS
93LC66CT-I/SN
93LC66CT-I/SN15KV01
93LC66CX-I/SN
93LC66CXT-I/SN
93LC66-I/P
93LC66-I/PB27
93LC66-I/SN
93LC66-I/SNV01
93LC66-I/SNV02
93LC66-I/SNVAO
93LC66T/SN
93LC66T-I/SN
93LC66T-I/SNV01
93LC66T-I/SNV02
93LC66X/SN
93LC66X-I/SN
93LC66XT-I/SN
93LC76/P
93LC76/SN
93LC76A-E/SN
93LC76A-I/SN
93LC76AT-E/OT
93LC76AT-E/OT15KV02
93LC76AT-E/OT15KVAO
93LC76AT-E/SN
93LC76AT-I/OT

93LC76AT-I/OT15KV01
93LC76AT-I/OT15KV03
93LC76AT-I/SN
93LC76B-E/SN
93LC76B-I/SN
93LC76BT-E/SN
93LC76BT-I/OT
93LC76BT-I/OT15KVAO
93LC76BT-I/SN
93LC76C-E/MS
93LC76C-E/SN
93LC76C-E/SNG15KV01
93LC76C-E/SNG15KVAO
93LC76C-I/MS
93LC76C-I/P
93LC76C-I/SN
93LC76C-I/SN15KVAO
93LC76CT-E/SN
93LC76CT-E/SNG15KV01
93LC76CT-E/SNG15KVAO
93LC76CT-I/MS
93LC76CT-I/SN
93LC76CT-I/SN15KVAO
93LC76-I/P
93LC76-I/SN
93LC76T/SN
93LC76T-I/SN
93LC76T-I/SNA21
93LC76T-I/SNV26
93LC86/P
93LC86/SN
93LC86A-E/SN
93LC86A-I/SN
93LC86AT-E/OT
93LC86AT-E/SN
93LC86AT-I/OT
93LC86AT-I/SN
93LC86B-E/SN
93LC86B-I/SN
93LC86BT-E/SN
93LC86BT-I/OT
93LC86BT-I/OT15KV01
93LC86BT-I/OT15KVAO
93LC86BT-I/SN
93LC86C-E/P
93LC86C-E/SN
93LC86C-E/SN15KV01
93LC86C-E/SN15KVAO
93LC86C-E/SNG15KV04
93LC86C-I/MS
93LC86C-I/P
93LC86C-I/SN

93LC86C-I/SN15KVAO
93LC86CT-E/SN
93LC86CT-E/SN15KV01
93LC86CT-E/SN15KV06
93LC86CT-E/SN15KV07
93LC86CT-E/SN15KV08
93LC86CT-E/SN15KVAO
93LC86CT-I/MS
93LC86CT-I/SN
93LC86CT-I/SN15KVAO
93LC86-I/P
93LC86-I/SN
93LC86-I/SN8V01
93LC86-I/SNV04
93LC86T/SN
93LC86T-I/SN
93LC86T-I/SN8V01
93LC86T-I/SNV04