

Product Change Notification - KSRA-23LPHB699

Date:

02 Aug 2019

Product Category:

8-bit Microcontrollers; 16-Bit - Microcontrollers and Digital Signal Controllers; 32-bit Microcontrollers

Affected CPNs:

Notification subject:

CCB 3845 and 3845.001 Final Notice: Implement new packing material (non-bakeable tray) for selected products available in 100L and 64L TQFP (14x14x1mm) packages at MMT assembly site

Notification text:
PCN Status:

Final notification

PCN Type:

Manufacturing Change

Microchip Parts Affected:

Please open one of the icons found in the Affected CPNs section above.

NOTE: For your convenience Microchip includes identical files in two formats (.pdf and .xls).

Description of Change:

Implement new packing material (non-bakeable tray) for selected Atmel products available in 100L and 64L TQFP (14x14x1mm) packages at MMT assembly site

Pre Change:

Use of bakeable tray packing material in MSL 3 requirements

Post Change:

Use of non-bakeable tray packing material in MSL 1 requirements

Pre and Post Change Summary:

	Pre Change	Post Change
Assembly Site	Microchip Technology Thailand (Branch) / MMT	Microchip Technology Thailand (Branch) / MMT
MSL Packing Requirements	MSL 3	MSL 1
Base Quantity Multiple (BQM) Minimum order quantity	90units/tray	90units/tray
Assembly Shipping Media	Bakeable Tray	Non-Bakeable Tray
Tray Color	Black	Blue
Tray Dimension (LxWxH)	322.6x135.9x 20.30 mm	322.6x135.9x 20.30 mm
Tray Photos	See Pre and Post Change attachment for the photo	

Impacts to Data Sheet:

None

Change Impact:

None

Reason for Change:

To improve manufacturability and qualify new packing material (non-bakeable tray) in MSL 1 requirements

Change Implementation Status:

In Progress



Estimated First Ship Date:

September 02, 2019 (date code: 1936)

NOTE: Please be advised that after the estimated first ship date customers may receive pre and post change parts.

Time Table Summary:

	July 2019					July 2019			
Workweek	31	32	33	34	35	36	37	38	39
Qual Report Availability	X								
Final PCN Issue Date	X								
Estimated Implementation Date						X			

Method to Identify Change:

Traceability code and packing material

Qualification Report:

Please open the attachments included with this PCN labeled as PCN_#_Qual_Report.

Revision History:

August 02, 2019: Issued final notification. Attached the Qualification Report. Provided estimated first ship date to be on September 02, 2019.

The change described in this PCN does not alter Microchip's current regulatory compliance regarding the material content of the applicable products.

Attachment(s):

- [PCN_KSRA-23LPHB699_Pre_and_Post_Change_Summary.pdf](#)
- [PCN_KSRA-23LPHB699_Qual_Report.pdf](#)

Please contact your local [Microchip sales office](#) with questions or concerns regarding this notification.

Terms and Conditions:

If you wish to receive Microchip PCNs via email please register for our PCN email service at our [PCN home page](#) select register then fill in the required fields. You will find instructions about registering for Microchips PCN email service in the [PCN FAQ](#) section.

If you wish to change your PCN profile, including opt out, please go to the [PCN home page](#) select login and sign into your myMicrochip account. Select a profile option from the left navigation bar and make the applicable selections.

Affected Catalog Part Numbers (CPN)

PIC32MX664F064LT-I/PF
PIC32MX764F128LT-I/PF
PIC24FJ64GA310-I/PF
PIC24FJ128GA310-I/PF
PIC18F95J94-I/PF
PIC18F96J94-I/PF
PIC18F97J94-I/PF
PIC18F95J94T-I/PF
PIC18F96J94T-I/PF
PIC18F97J94T-I/PF
PIC32MX330F064L-I/PF
PIC32MX430F064L-I/PF
PIC32MX330F064L-V/PF
PIC32MX430F064L-V/PF
PIC32MX330F064LT-V/PF
PIC32MX430F064LT-V/PF
PIC32MX330F064LT-I/PF
PIC32MX430F064LT-I/PF
PIC32MX350F256L-I/PF
PIC32MX350F128L-I/PF
PIC32MX450F256L-I/PF
PIC32MX450F128L-I/PF
PIC32MX350F256L-V/PF
PIC32MX350F128L-V/PF
PIC32MX450F256L-V/PF
PIC32MX450F128L-V/PF
PIC32MX350F256LT-V/PF
PIC32MX350F128LT-V/PF
PIC32MX450F256LT-V/PF
PIC32MX450F128LT-V/PF
PIC32MX350F256LT-I/PF
PIC32MX350F128LT-I/PF
PIC32MX450F256LT-I/PF
PIC32MX450F128LT-I/PF
PIC32MX450F256L-120/PF
PIC32MX450F256LT-120/PF
PIC32MX370F512L-I/PF
PIC32MX470F512L-I/PF
PIC32MX370F512L-V/PF
PIC32MX470F512L-V/PF
PIC32MX370F512LT-V/PF
PIC32MX470F512LT-V/PF
PIC32MX370F512LT-I/PF
PIC32MX470F512LT-I/PF
PIC32MX470F512L-120/PF
PIC32MX470F512LT-120/PF

PIC32MX150F256L-I/PF
PIC32MX170F512L-I/PF
PIC32MX130F128L-I/PF
PIC32MX250F256L-I/PF
PIC32MX230F128L-I/PF
PIC32MX270F512L-I/PF
PIC32MX550F256L-I/PF
PIC32MX530F128L-I/PF
PIC32MX570F512L-I/PF
PIC32MX150F256L-V/PF
PIC32MX170F512L-V/PF
PIC32MX130F128L-V/PF
PIC32MX250F256L-V/PF
PIC32MX230F128L-V/PF
PIC32MX270F512L-V/PF
PIC32MX550F256L-V/PF
PIC32MX530F128L-V/PF
PIC32MX570F512L-V/PF
PIC32MX150F256LT-V/PF
PIC32MX170F512LT-V/PF
PIC32MX130F128LT-V/PF
PIC32MX250F256LT-V/PF
PIC32MX230F128LT-V/PF
PIC32MX270F512LT-V/PF
PIC32MX550F256LT-V/PF
PIC32MX530F128LT-V/PF
PIC32MX570F512LT-V/PF
PIC32MX150F256LT-I/PF
PIC32MX170F512LT-I/PF
PIC32MX130F128LT-I/PF
PIC32MX250F256LT-I/PF
PIC32MX230F128LT-I/PF
PIC32MX270F512LT-I/PF
PIC32MX550F256LT-I/PF
PIC32MX530F128LT-I/PF
PIC32MX570F512LT-I/PF
PIC32MX150F256L-50I/PF
PIC32MX170F512L-50I/PF
PIC32MX130F128L-50I/PF
PIC32MX250F256L-50I/PF
PIC32MX230F128L-50I/PF
PIC32MX270F512L-50I/PF
PIC32MX550F256L-50I/PF
PIC32MX530F128L-50I/PF
PIC32MX570F512L-50I/PF
PIC32MX150F256LT-50I/PF
PIC32MX170F512LT-50I/PF
PIC32MX130F128LT-50I/PF
PIC32MX250F256LT-50I/PF

PIC32MX230F128LT-50I/PF
PIC32MX270F512LT-50I/PF
PIC32MX550F256LT-50I/PF
PIC32MX530F128LT-50I/PF
PIC32MX570F512LT-50I/PF
PIC24FJ128GA010-I/PF
PIC24FJ96GA010-I/PF
PIC24FJ64GA010-I/PF
PIC24FJ64GA010T-I/PF
DSPIC33FJ64GS610-E/PF
DSPIC33FJ32GS610-E/PF
DSPIC33FJ64GS610-I/PF
DSPIC33FJ32GS610-I/PF
DSPIC33FJ64GS610T-I/PF
DSPIC33FJ64GS610T-E/PF
DSPIC33FJ64GS610-50I/PF
DSPIC33FJ32GS610-50I/PF
DSPIC33FJ64GS610T-50I/PF
DSPIC33FJ32GS610T-50I/PF
PIC32MZ1024ECG100-I/PF
PIC32MZ2048ECG100-I/PF
PIC32MZ1024ECH100-I/PF
PIC32MZ2048ECH100-I/PF
PIC32MZ1024ECM100-I/PF
PIC32MZ2048ECM100-I/PF
PIC32MZ1024ECG100T-I/PF
PIC32MZ2048ECG100T-I/PF
PIC32MZ1024ECH100T-I/PF
PIC32MZ2048ECH100T-I/PF
PIC32MZ1024ECM100T-I/PF
PIC32MZ2048ECM100T-I/PF
PIC32MZ0512EFE100-E/PF
PIC32MZ0512EFF100-E/PF
PIC32MZ0512EFK100-E/PF
PIC32MZ1024EFE100-E/PF
PIC32MZ1024EFF100-E/PF
PIC32MZ1024EFG100-E/PF
PIC32MZ1024EFH100-E/PF
PIC32MZ1024EFK100-E/PF
PIC32MZ1024EFM100-E/PF
PIC32MZ2048EFG100-E/PF
PIC32MZ2048EFH100-E/PF
PIC32MZ2048EFM100-E/PF
PIC32MZ0512EFE100-I/PF
PIC32MZ0512EFF100-I/PF
PIC32MZ2048EFH100-250I/PF
PIC32MZ0512EFK100-I/PF
PIC32MZ1024EFE100-I/PF
PIC32MZ1024EFF100-I/PF

PIC32MZ1024EFG100-I/PF
PIC32MZ1024EFH100-I/PF
PIC32MZ1024EFK100-I/PF
PIC32MZ1024EFM100-I/PF
PIC32MZ2048EFG100-I/PF21
PIC32MZ2048EFG100-I/PF
PIC32MZ2048EFH100-I/PF21
PIC32MZ2048EFH100-I/PF
PIC32MZ2048EFM100-I/PF
PIC32MZ0512EFE100T-I/PF
PIC32MZ0512EFF100T-I/PF
PIC32MZ2048EFH100T-250I/PF
PIC32MZ0512EFK100T-I/PF
PIC32MZ1024EFE100T-I/PF
PIC32MZ1024EFF100T-I/PF
PIC32MZ1024EFG100T-I/PF
PIC32MZ1024EFH100T-I/PF
PIC32MZ1024EFK100T-I/PF
PIC32MZ1024EFM100T-I/PF
PIC32MZ2048EFG100T-I/PF21
PIC32MZ2048EFG100T-I/PF
PIC32MZ2048EFH100T-I/PF
PIC32MZ2048EFM100T-I/PF
PIC32MZ0512EFE100T-E/PF
PIC32MZ0512EFF100T-E/PF
PIC32MZ0512EFK100T-E/PF
PIC32MZ1024EFE100T-E/PF
PIC32MZ1024EFF100T-E/PF
PIC32MZ1024EFG100T-E/PF
PIC32MZ1024EFH100T-E/PF
PIC32MZ1024EFK100T-E/PF
PIC32MZ1024EFM100T-E/PF
PIC32MZ2048EFG100T-E/PF
PIC32MZ2048EFH100T-E/PF
PIC32MZ2048EFM100T-E/PF
PIC24HJ64GP210-I/PF
PIC24HJ64GP510-I/PF
PIC24HJ128GP210-I/PF
PIC24HJ128GP310-I/PF
PIC24HJ128GP510-I/PF
PIC24HJ256GP210-I/PF
PIC24HJ256GP610-I/PF
DSPIC33FJ256GP710-I/PFB21
DSPIC33FJ64GP310-I/PF
DSPIC33FJ64GP710-I/PF
DSPIC33FJ128GP310-I/PF
DSPIC33FJ128GP710-I/PF
DSPIC33FJ256GP510-I/PF
DSPIC33FJ256GP710-I/PF

DSPIC33FJ64MC710-I/PF
DSPIC33FJ128MC510-I/PF
DSPIC33FJ128MC710-I/PF
DSPIC33FJ256MC510-I/PF
DSPIC33FJ256MC710-I/PF
PIC24HJ256GP210T-I/PF
PIC24HJ256GP610T-I/PF
DSPIC33FJ256GP710T-I/PF
DSPIC33FJ256MC710T-I/PF
PIC18F97J60-I/PF
PIC18F97J60-I/PFREL
PIC18F97J60T-I/PF
PIC18F96J65-I/PF
PIC18F96J60-I/PF
PIC24HJ64GP210A-E/PF
PIC24HJ64GP510A-E/PF
PIC24HJ128GP210A-E/PF
PIC24HJ128GP310A-E/PF
PIC24HJ128GP510A-E/PF
DSPIC33FJ64GP310A-E/PF
DSPIC33FJ64GP710A-E/PF
DSPIC33FJ128GP310A-E/PF
DSPIC33FJ128GP710A-E/PF
DSPIC33FJ64MC510A-E/PF
DSPIC33FJ64MC710A-E/PF
DSPIC33FJ128MC510A-E/PF
DSPIC33FJ128MC710A-E/PF
PIC24HJ64GP210A-I/PF
PIC24HJ64GP510A-I/PF
PIC24HJ128GP210A-I/PF
PIC24HJ128GP310A-I/PF
PIC24HJ128GP510A-I/PF
DSPIC33FJ64GP310A-I/PF
DSPIC33FJ64GP710A-I/PF
DSPIC33FJ128GP310A-I/PF
DSPIC33FJ128GP710A-I/PF
DSPIC33FJ64MC510A-I/PF
DSPIC33FJ64MC710A-I/PF
DSPIC33FJ128MC510A-I/PF
DSPIC33FJ128MC710A-I/PF
PIC24HJ128GP510A-H/PF
DSPIC33FJ128MC710A-H/PF
PIC24HJ64GP510AT-I/PF
PIC24HJ128GP510AT-I/PF
DSPIC33FJ128MC710AT-I/PF
PIC24FJ128GA110-E/PF
PIC24FJ256GA110-E/PF
PIC24FJ64GA110-I/PF
PIC24FJ128GA110-I/PF

PIC24FJ256GA110-I/PFC10
PIC24FJ192GA110-I/PF
PIC24FJ256GA110-I/PF
PIC24FJ64GB110-I/PF
PIC24FJ128GB110-I/PF
PIC24FJ192GB110-I/PF
PIC24FJ256GB110-I/PF
PIC24FJ256GB110-I/PFREL
PIC24FJ256GB110T-I/PF
PIC24HJ256GP210A-E/PF
PIC24HJ256GP610A-E/PF
DSPIC33FJ256GP510A-E/PF
DSPIC33FJ256GP710A-E/PF
DSPIC33FJ256MC510A-E/PF
DSPIC33FJ256MC710A-E/PF
PIC24HJ256GP210A-I/PF
PIC24HJ256GP610A-I/PF
DSPIC33FJ256GP510A-I/PF
DSPIC33FJ256GP710A-I/PF
DSPIC33FJ256MC510A-I/PF
DSPIC33FJ256MC710A-I/PF
PIC24HJ256GP610A-H/PF
DSPIC33FJ256MC710A-H/PF
DSPIC33FJ256GP710A-H/PF
PIC24HJ256GP610AT-I/PF
DSPIC33FJ256GP710AT-I/PF
DSPIC33FJ256MC710AT-I/PF
ATMEGA128A-AUA2
ATMEGA128L-8AU
ATMEGA128A-AU
ATMEGA128-16AU
ATMEGA128A-AU-HCM
ATMEGA128-16AN
ATMEGA128A-AN
ATMEGA128-16ANR
ATMEGA128L-8ANR
ATMEGA128A-ANR
ATMEGA128A-AUR
ATMEGA128L-8AUR
ATMEGA128L-8AURA6
ATMEGA128-16AURA0
ATMEGA128-16AUR
ATMEGA64A-AU
ATMEGA64-16AU
ATMEGA64L-8AU
ATMEGA64-16AUA0
ATMEGA64A-AN
ATMEGA64A-ANR
ATMEGA64A-AUR

ATMEGA64-16AUR
ATMEGA64L-8AUR
ATMEGA64-16AURA0
ATMEGA645P-AU
ATMEGA649A-AU
ATMEGA645A-AU
ATMEGA649P-AU
ATMEGA649A-AUR
ATMEGA645A-AUR
ATMEGA645P-AUR
ATMEGA649P-AUR
ATMEGA329PA-AU
ATMEGA325A-AU
ATMEGA325PA-AU
ATMEGA329A-AU
ATMEGA325A-AN
ATMEGA325A-ANR
ATMEGA325PA-AUR
ATMEGA329A-AUR
ATMEGA329PA-AUR
ATMEGA325A-AUR
ATMEGA165PA-AU
ATMEGA169A-AU
ATMEGA169PA-AU
ATMEGA165A-AU
ATMEGA169PA-AN
ATMEGA169PA-ANR
ATMEGA165PA-AUR
ATMEGA165A-AUR
ATMEGA169A-AUR
ATMEGA169PA-AUR
ATHON169A-AUR
ATMEGA329V-8AU
ATMEGA329-16AU
ATMEGA325V-8AU
ATMEGA325-16AU
ATMEGA329V-8AUR
ATMEGA325V-8AUR
ATMEGA325-16AUR
ATMEGA329-16AUR
ATMEGA128L-8AUA4
ATMEGA128-16AUA4
ATMEGA128L-8AN
ATMEGA128L-8AURA5
ATMEGA128L-8AURA3
ATMEGA128-16AURA3
ATMEGA649V-8AU
ATMEGA645-16AU
ATMEGA649-16AU

ATMEGA645V-8AU
ATMEGA649-16AUR
ATMEGA645V-8AUR
ATMEGA649V-8AUR
ATMEGA645-16AUR
ATMEGA2561V-8AU
ATMEGA2561-16AU
ATMEGA2561V-8AUR
ATMEGA2561-16AUR
ATMEGA169PV-8AU
ATMEGA169P-16AU
ATMEGA165P-16AU
ATMEGA165PV-8AU
ATMEGA165P-16AN
ATMEGA165PV-8AN
ATMEGA165PV-8ANR
ATMEGA165P-16ANR
ATMEGA169PV-8AUR
ATMEGA169P-16AUR
ATMEGA165P-16AUR
ATMEGA165PV-8AUR
ATMEGA169PV-8AURA3
ATMEGA325PV-10AU
ATMEGA329P-20AU
ATMEGA329PV-10AU
ATMEGA325P-20AU
ATMEGA329P-20ANR
ATMEGA329P-16AUR
ATMEGA325PV-10AURA1
ATMEGA325PV-10AUR
ATMEGA329P-20AUR
ATMEGA329PV-10AUR
ATMEGA329PV-10AURA0
ATMEGA325P-20AUR
ATMEGA325P-20AURA0
ATMEGA64L-8AUA2
ATMEGA64L-8AUA4
ATMEGA64-16AUA2
ATMEGA64L-8AQ
ATMEGA64L-8AQR
ATMEGA64L-8AQRA1
ATMEGA64L-8AURA1
ATMEGA64L-8AURA3
ATMEGA64-16AURA1
ATMEGA1281-16AU
ATMEGA1281V-8AU
ATMEGA1281V-8AUR
ATMEGA1281-16AUR
ATMEGA2561-16AUA0

ATMEGA2561V-8AUA0
ATMEGA2561-16AURA0
ATMEGA2561V-8AURA0
AT90USB1287-AU
AT90USB1286-AU
AT90USB1286-AUR
AT90USB1287-AUR
AT90CAN32-16AU
AT90CAN32-16AUR
AT90CAN64-16AU
AT90CAN64-16AUR
AT90USB647-AU
AT90USB646-AU
AT90USB647-AUR
AT90USB646-AUR
AT90CAN128-16AU
AT90CAN128-16AUR
ATXMEGA256A3-AU
ATXMEGA256D3-AU
ATXMEGA64D3-AUA1
ATXMEGA128D3-AU
ATXMEGA192A3-AU
ATXMEGA64A3-AU
ATXMEGA128A3-AU
ATXMEGA64D3-AUA3
ATXMEGA192A3-AUR
ATXMEGA256D3-AUR
ATXMEGA64D3-AUR
ATXMEGA64A3-AURA0
ATXMEGA256D3-AURA2
ATXMEGA64D3-AURA3
ATXMEGA256A3-AUR
ATXMEGA64A3-AUR
ATXMEGA64D3-AURA0
ATXMEGA128A3-AUR
ATXMEGA128A3U-AU
ATXMEGA64A3U-AU
ATXMEGA192A3U-AU
ATXMEGA256A3BU-AU
ATXMEGA256A3U-AU
ATXMEGA192D3-AUA0
ATXMEGA256D3-AUA1
ATXMEGA128D3-AUA0
ATXMEGA64D3-AUA2
ATXMEGA256A3U6L-AU
ATXMEGA192A3U-AN
ATXMEGA256A3U-AN
ATXMEGA192A3U-ANR
ATXMEGA256A3U-ANR

ATXMEGA192A3U-AUR
ATXMEGA192D3-AURA0
ATXMEGA256A3BU-AUR
ATXMEGA256D3-AURA1
ATXMEGA64D3-AURA2
ATXMEGA128A3U-AURA0
ATXMEGA256A3U-AUR
ATXMEGA128A3U-AUR
ATXMEGA64A3U-AUR
ATXMEGA64B3-AU
ATXMEGA128B3-AU
ATXMEGA128B3-AN
ATXMEGA64B3-AN
ATXMEGA128B3-ANR
ATXMEGA64B3-ANR
ATXMEGA64B3-AUR
ATXMEGA128B3-AUR
ATXMEGA192D3-AU
ATXMEGA256C3-AU
ATXMEGA192C3-AU
ATXMEGA256D3-AUA3
ATXMEGA256D3-AUA0
ATXMEGA256C3-AUA0
ATXMEGA192D3-AUR
ATXMEGA256C3-AUR
ATXMEGA192D3-AURA1
ATXMEGA256D3-AURA3
ATXMEGA256D3-AURA0
ATXMEGA256C3-AURA0
ATXMEGA192C3-AUR
ATXMEGA384C3-AU
ATXMEGA384D3-AU
ATXMEGA384C3-AUR
ATXMEGA128C3-AU
ATXMEGA128D3-AUA1
ATXMEGA128C3-AUR
ATXMEGA128D3-AURA1
ATXMEGA128D3-AUR
ATXMEGA32C3-AU
ATXMEGA64D3-AUA4
ATXMEGA32D3-AUA0
ATXMEGA64D3-AU
ATXMEGA64C3-AU
ATXMEGA32D3-AU
ATXMEGA32C3-AN
ATXMEGA32D3-AN
ATXMEGA64C3-AN
ATXMEGA64D3-AN
ATXMEGA32C3-ANR

ATXMEGA32D3-ANR
ATXMEGA64C3-ANR
ATXMEGA64D3-ANR
ATXMEGA64D3-AURA4
ATXMEGA64C3-AUR
ATXMEGA32C3-AUR
ATXMEGA32D3-AUR
ATXMEGA64D3-AURA6
DSPIC30F6011A-20E/PF
DSPIC30F6012A-20E/PF
DSPIC30F6011A-30I/PF
DSPIC30F6012A-30I/PF
DSPIC33FJ64MC506A-E/PFC23
DSPIC33FJ64MC506-I/PFC23
DSPIC33FJ64MC506T-I/PFC23
DSPIC33FJ64MC506AT-E/PFC23
ATMEGA6450P-AU
ATMEGA6450A-AU
ATMEGA6490A-AU
ATMEGA6490P-AU
ATMEGA6450A-AUR
ATMEGA6490A-AUR
ATMEGA6490P-AUR
ATMEGA6450P-AUR
ATMEGA3250PA-AU
ATMEGA3290A-AU
ATMEGA3250A-AU
ATMEGA3290PA-AU
ATMEGA3250PA-AUR
ATMEGA3290A-AUR
ATMEGA3250A-AUR
ATMEGA3290PA-AUR
ATMEGA3250V-8AU
ATMEGA3290V-8AU
ATMEGA3250-16AU
ATMEGA3290-16AU
ATMEGA3250V-8AUR
ATMEGA3250-16AUR
ATMEGA3290-16AUR
ATMEGA3290V-8AUR
ATMEGA6490-16AU
ATMEGA6490V-8AU
ATMEGA6450V-8AU
ATMEGA6450-16AU
ATMEGA6450V-8AUR
ATMEGA6450-16AUR
ATMEGA6490-16AUR
ATMEGA6490V-8AUR
ATMEGA2560-16AU

ATMEGA2560V-8AU
ATMEGA2560-16AUR
ATMEGA3250PV-10AU
ATMEGA3290P-20AU
ATMEGA3250P-20AU
ATMEGA3290PV-10AU
ATMEGA3290PV-10AUA0
ATMEGA3250PV-10AUR
ATMEGA3290PV-10AUR
ATMEGA3290P-20AUR
ATMEGA3250P-20AUR
ATMEGA1280-16AU
ATMEGA1280V-8AU
ATMEGA640V-8AU
ATMEGA640-16AU
ATMEGA1280-16AU-HCM
ATMEGA1280-16AUR
ATMEGA1280V-8AUR
ATMEGA640V-8AUR
ATMEGA640-16AUR
ATMEGA640-16AURA0
ATMEGA2560-16AUA0
ATMEGA2560V-8AUA0
ATMEGA2560-16AU-HCM
ATMEGA2560-16AURA0
ATMEGA2560V-8AURA0
ATMEGA2560V-8AUR
ATXMEGA64A1-AU
ATXMEGA128A1-AU
ATXMEGA64A1-AUR
ATXMEGA128A1-AUR
ATXMEGA128A1U-AU
ATXMEGA64A1U-AU
ATXMEGA128A1U-AN
ATXMEGA128A1U-ANR
ATXMEGA128A1U-AUR
ATXMEGA64A1U-AUR
ATXMEGA128B1-AU
ATXMEGA64B1-AU
ATXMEGA64B1-AUA0
ATXMEGA128B1-ANR
ATXMEGA64B1-ANR
ATXMEGA128B1-AURA0
ATXMEGA128B1-AUR
ATXMEGA64B1-AUR
AT32UC3A1512-AUR
AT32UC3A1512-AUT
AT32UC3A1128-AUT
AT32UC3A1256-AUT

AT32UC3A1128-AUR
AT32UC3A1256-AUR
AT32UC3C1128C-AUT
AT32UC3C1256C-AUT
AT32UC3C1512C-AUT
AT32UC3C164C-AUT
AT32UC3C1128C-AUR
AT32UC3C1256C-AUR
AT32UC3C1512C-AUR
AT32UC3C164C-AUR
AT32UC3C1256C-AURA0
ATSAM4LC4CA-AU
ATSAM4LS4CA-AU
ATSAM4LC2CA-AU
ATSAM4LS2CA-AU
ATSAM4LC4CA-AUR
ATSAM4LS4CA-AUR
ATSAM4LC2CA-AUR
ATSAM4LS2CA-AUR
ATSAM4LC8CA-AU
ATSAM4LS8CA-AU
ATSAM4LC8CA-AUR
ATSAM4LS8CA-AUR
PIC16F1939-ME2/PF
PIC16F1789-ME2/PF
PIC16F1829-ME2/PF
PIC16F1719-ME2/PF
PIC16F1619-ME2/PF
DSPIC33EP256MU810-E/PF
DSPIC33EP512MU810-E/PF
PIC24EP256GU810-E/PF
PIC24EP512GU810-E/PF
DSPIC33EP512MU810-I/PFC04
DSPIC33EP256MU810-I/PF
DSPIC33EP512MU810-I/PF
PIC24EP256GU810-I/PF
PIC24EP512GU810-I/PF
DSPIC33EP256MU810T-I/PF
DSPIC33EP512MU810T-I/PF
PIC24EP256GU810T-I/PF
PIC24EP512GU810T-I/PF
DSPIC33EP256MU810T-E/PF
DSPIC33EP512MU810T-E/PF
PIC24EP256GU810T-E/PF
PIC24EP512GU810T-E/PF
PIC32MX575F512L-80I/PF
PIC32MX575F256L-80I/PF
PIC32MX695F512L-80I/PF
PIC32MX675F512L-80I/PF

PIC32MX675F256L-80I/PF
PIC32MX795F512L-80I/PFE21
PIC32MX795F512L-80I/PF
PIC32MX775F512L-80I/PF
PIC32MX775F256L-80I/PF
PIC32MX575F512L-80V/PF
PIC32MX575F256L-80V/PF
PIC32MX695F512L-80V/PF
PIC32MX675F512L-80V/PF
PIC32MX675F256L-80V/PF
PIC32MX795F512L-80V/PF
PIC32MX775F512L-80V/PF
PIC32MX775F256L-80V/PF
PIC32MX575F256LT-80V/PFC21
PIC32MX575F512LT-80V/PF
PIC32MX575F256LT-80V/PF
PIC32MX695F512LT-80V/PF
PIC32MX675F512LT-80V/PF
PIC32MX675F256LT-80V/PF
PIC32MX795F512LT-80V/PF
PIC32MX775F512LT-80V/PF
PIC32MX775F256LT-80V/PF
PIC32MX575F512LT-80I/PF
PIC32MX575F256LT-80I/PF
PIC32MX695F512LT-80I/PF
PIC32MX675F512LT-80I/PF
PIC32MX675F256LT-80I/PF
PIC32MX795F512LT-80I/PF
PIC32MX775F512LT-80I/PF
PIC32MX775F256LT-80I/PF
DSPIC33EP128GM310-E/PF
DSPIC33EP128GM710-E/PF
DSPIC33EP256GM310-E/PF
DSPIC33EP256GM710-E/PF
DSPIC33EP512GM310-E/PF
DSPIC33EP512GM710-E/PF
DSPIC33EP128GM310-I/PF
DSPIC33EP128GM710-I/PF
DSPIC33EP256GM310-I/PF
DSPIC33EP256GM710-I/PF
DSPIC33EP512GM310-I/PF
DSPIC33EP512GM710-I/PF
DSPIC33EP128GM710T-I/PF
DSPIC33EP512GM310T-I/PF
PIC32MX564F128L-I/PF
PIC32MX534F064L-I/PF
PIC32MX564F064L-I/PF
PIC32MX664F128L-I/PF
PIC32MX664F064L-I/PF

PIC32MX764F128L-I/PF
PIC32MX564F128L-V/PF
PIC32MX534F064L-V/PF
PIC32MX564F064L-V/PF
PIC32MX664F128L-V/PF
PIC32MX664F064L-V/PF
PIC32MX764F128L-V/PF
PIC32MX564F128LT-V/PF
PIC32MX534F064LT-V/PF
PIC32MX564F064LT-V/PF
PIC32MX664F128LT-V/PF
PIC32MX664F064LT-V/PF
PIC32MX764F128LT-V/PF
PIC32MX564F128LT-I/PF
PIC32MX534F064LT-I/PF
PIC32MX564F064LT-I/PF
PIC32MX664F128LT-I/PF





MICROCHIP

**CCB 3845 and 3845.001 Final Notice:
Implement new packing material (non-
bakeable tray) for selected products available
in 100L and 64L TQFP (14x14x1mm) packages
at MMT assembly site**

Pre and Post Change Summary

Pre and Post Change Summary:

	Pre Change	Post Change
Assembly Site	Microchip Technology Thailand (Branch) / MMT	Microchip Technology Thailand (Branch) / MMT
MSL Packing Requirements	MSL 3	MSL 1
Base Quantity Multiple (BQM) Minimum order quantity	90units/tray	90units/tray
Assembly Shipping Media	Bakeable Tray	Non-Bakeable Tray
Tray Color	Black	Blue
Tray Dimension (LxWxH)	322.6x135.9x 20.30 mm	322.6x135.9x 20.30 mm
Tray Photos	 <p>The black tray is shown from a top-down perspective and two close-up views of the bottom edge. The top view shows a 14x14 grid of square compartments. The bottom edge close-ups show markings: '0T-003T-3 SHINON TQFP 14X14 t=1.0mm' and '150°C MAX.'.</p>	 <p>The blue tray is shown from a top-down perspective and two close-up views of the bottom edge. The top view shows a 14x14 grid of square compartments. The bottom edge close-ups show markings: 'UBOT TQFP1414' and '75°C MAX. ABS UQ14141.00615YA'.</p>



MICROCHIP

FUNCTIONAL TEST AND DROP TEST RESULT

PCN #: KSRA-23LPHB699

**Date
May 22,2019**

Implement new packing material (non-bakeable tray) for selected products available in 100L TQFP (14x14x1mm) package at MMT assembly site. The selected products available 64L TQFP package will qualify by similarity (QBS).

Purpose Implement new packing material (non-bakeable tray) for selected products available in 100L TQFP (14x14x1mm) package at MMT assembly site. The selected products available 64L TQFP package will qualify by similarity (QBS).

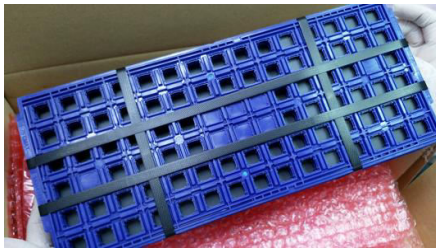
CCB No 3845 and 3845.001

Functional Test and Drop Test

Drop Test Procedure:

1. Visual inspection before test
2. Original package
3. Drop at height 1 m. 7 times
4. Visual inspection after tested

Stripping tray



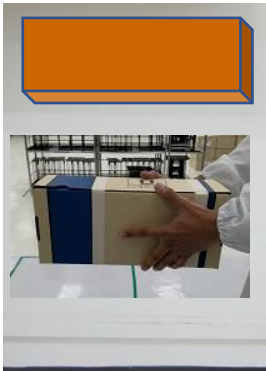
Rubber sheet (inbox)



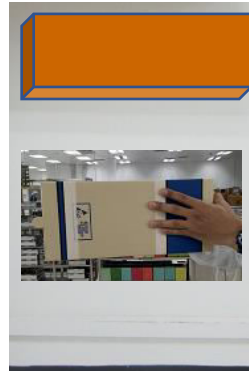
Completed package



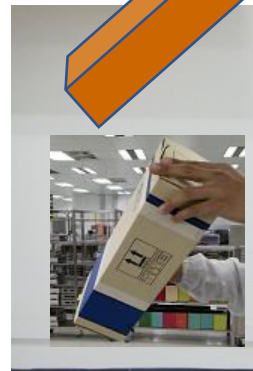
Side 6 bottom



Side 5



Side 2



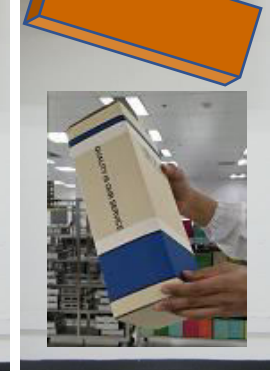
Corner side 2-4



Corner side 3-5



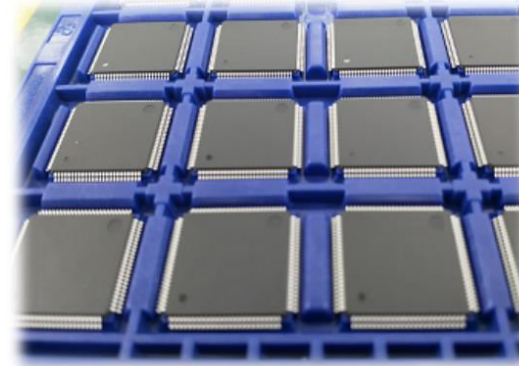
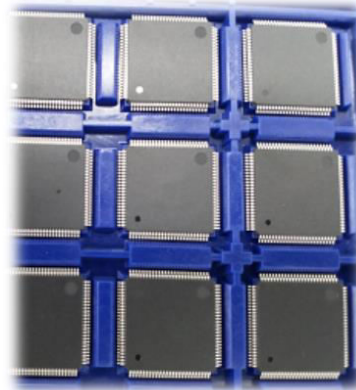
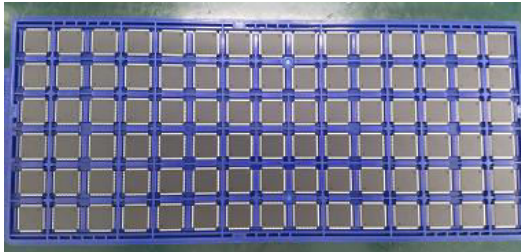
Side 4



Corner side 2-6

Result of Drop Test :

Package	Drop height (m.)	Qty.	Result
100 TQFP	1	10 tray / 900 units	Passed

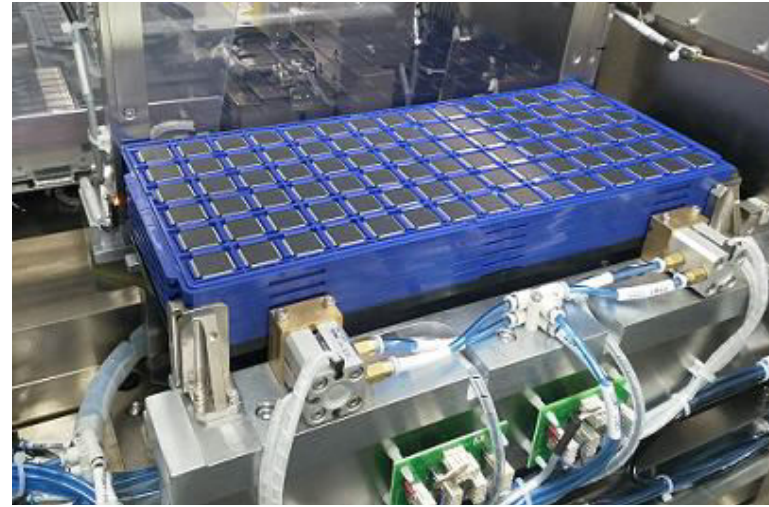


Conclusion :

- DROP TEST is Accept.
- Package have no defect.
- 100% Yield

Functional Test :

- *TRAY 100 TQFP 14X14 ,*
- *M/C # ASM model MPENIX*
- *Auto running 50 strips (1500 units)*



Conclusion :

- ❑ **FUNCTIONAL TEST is Accept**
- ❑ **Machine don't jam.**
- ❑ **100% yield, Have no defect**