

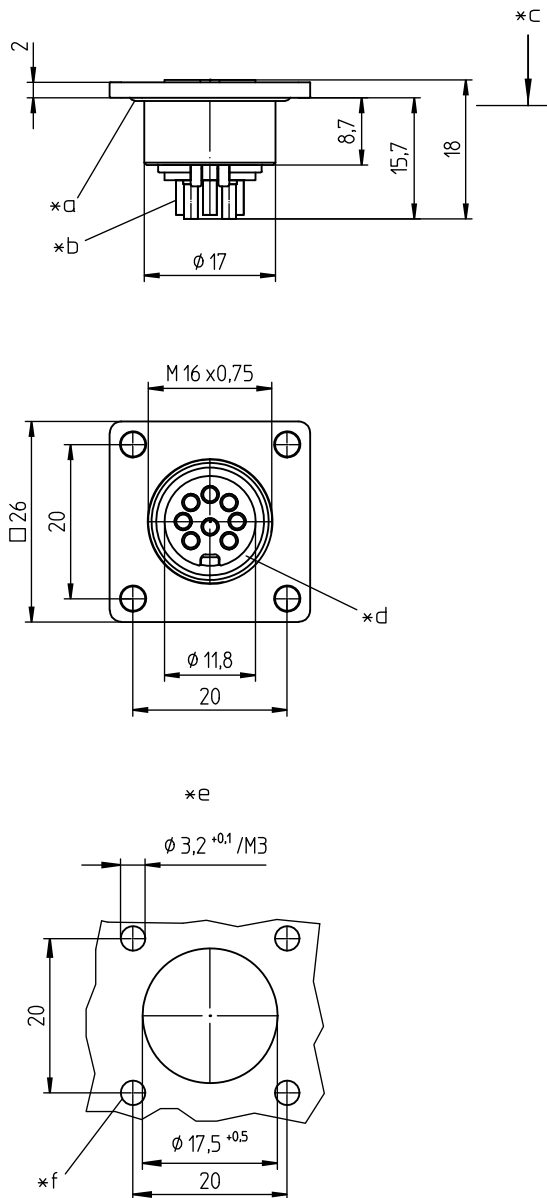
03 0308-2

Circular connectors with threaded joint M16 acc. to IEC 61076-2-106, IP40/IP68



SWUM™ flange chassis socket acc. to IEC 61076-2-106 and AISG specification, IP68/67, with threaded joint and solder terminals, for front mounting

03 0308-2



#### Environmental conditions

Temperature range -40 °C/+85 °C

#### Materials

Insulating body PA, V-2 according to UL94  
Contact bush CuZn, silver-plated and flash gold-plated  
Housing Zn diecast, pre-copper and nickel-plated  
Seal CR (flat), EPDM (O-ring)

#### Mechanical data

Insertion force/contact  $\leq 5.0 \text{ N}^1$   
Withdrawal force/contact  $\geq 1.2 \text{ N}^1$   
Tightening torque connector 1-3 Nm  
Tightening torque nut 1-3 Nm  
Protection class IP68/67<sup>2</sup>

<sup>1</sup> measured with a polished steel pin, nominal thickness 1.5 mm

<sup>2</sup> according to IEC 60529/DIN EN 60529

IP68: sealed in locked position; pair of appropriate connectors in locked position is sealed against ingress of dust and moisture.

IP67: sealed when unmated (SWUM™); no dust or moisture can ingress into the inside of the device through an unmated connector accidentally left unprotected.

IPX8 requirements under agreement between user and manufacturer

#### Connectable conductors for solder area

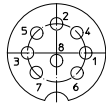
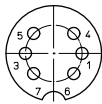
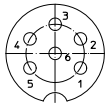
Section  $\leq 0.75 \text{ mm}^2$  (AWG 20)

#### Electrical data (at $T_{\text{amb}} 20 \text{ °C}$ )

Contact resistance  $\leq 5 \text{ m}\Omega$   
Rated current 5 A ( $T_{\text{amb}} 40 \text{ °C}$ )  
Rated voltage 100 V (with pollution degree 1)  
32 V (with pollution degree 2)  
Rated impulse voltage 500 V  
Material group II (IEC)/I (UL) ( $400 \leq \text{CTI} < 600$ )  
Overvoltage category I  
Insulation resistance  $> 100 \text{ M}\Omega$

## 03 0308-2

### Pin configurations, solder side view



08-a

-

0308-2 06-1

0308-2 08-1

- \*a O-ring gasket
- \*b cup-shaped solder terminal
- \*c mounting direction
- \*d flat gasket
- \*e port in mounting plate
- \*f provide for suitable sealing of screws

### Associated products

#### Counterparts

☞ 0331

☞ 0332

☞ 0332-1

☞ 033200

☞ 0365

☞ 036500

☞ Weitere Produkte  
auf Anfrage

☞ Weitere Produkte  
auf Anfrage

#### Accessories

☞ 0308 C 02

☞ 0322 C 16

☞ 0381

☞ 038199

☞ 038799

03 0308-2

Designation	Pole Number	PU (Pieces)	MDQ (Pieces)
0308-2 06-1	6	50	100
0308-2 08-1	8	50	100

**Packaging:**

in a cardboard box