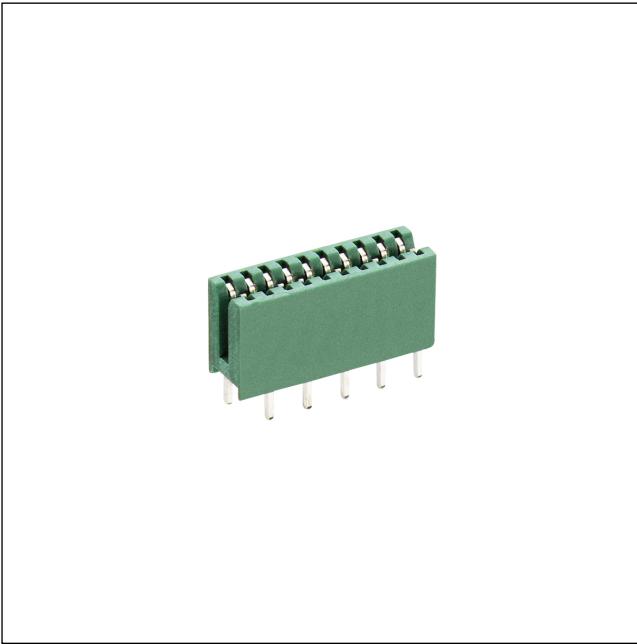


51

2,5 R

Direct connectors for insert cards, pitch 2.5/2.54/5.0/ 5.08 mm



Socket board for direct mating, with solder pins

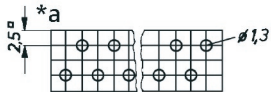
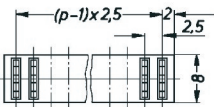
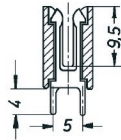
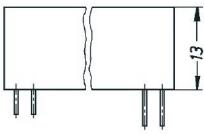
---

State: Phasing out

---

51

2,5 R



\*a printed circuit board layout, solder side view

#### Environmental conditions

Temperature range -25 °C/+100 °C

#### Materials

Insulating body PPO  
Contact spring CuSn, pre-nickel and tin-plated

#### Mechanical data

Mating with printed circuit board  $1.5 \pm 0.14$  mm

#### Electrical data (at $T_{amb}$ 20 °C)

Contact resistance  $\leq 3$  m $\Omega$   
Rated current 5 A  
Rated voltage 160 V AC  
Rated impulse voltage  $\geq 1,5$  kV

#### Associated products

Accessories

 F

 FD

 FF

 SP 3

51

2,5 R

Designation	Pole Number	PU (Pieces)	MDQ (Pieces)
2,5 R 03	3	200	5000
2,5 R 04	4	200	5000
2,5 R 05	5	200	5000
2,5 R 06	6	200	5000
2,5 R 07	7	200	5000
2,5 R 08	8	200	5000
2,5 R 09	9	200	5000
2,5 R 10	10	200	5000
2,5 R 11	11	200	5000
2,5 R 12	12	200	5000
2,5 R 13	13	200	5000
2,5 R 14	14	200	5000
2,5 R 15	15	200	5000
2,5 R 16	16	200	5000
2,5 R 17	17	200	5000
2,5 R 18	18	200	5000
2,5 R 19	19	200	5000
2,5 R 20	20	200	5000
2,5 R 21	21	200	5000
2,5 R 22	22	200	5000
2,5 R 23	23	200	5000
2,5 R 24	24	200	5000
2,5 R 25	25	200	5000
2,5 R 26	26	200	5000
2,5 R 27	27	200	5000
2,5 R 28	28	200	5000
2,5 R 29	29	200	5000
2,5 R 30	30	200	5000
2,5 R 31	31	200	5000
2,5 R 32	32	200	5000
2,5 R 33	33	200	5000
2,5 R 34	34	200	5000
2,5 R 35	35	200	5000
2,5 R 36	36	200	5000
2,5 R 37	37	200	5000
2,5 R 38	38	200	5000

51

2,5 R

Designation	Pole Number	PU (Pieces)	MDQ (Pieces)
2,5 R 39	39	200	5000
2,5 R 40	40	200	5000
2,5 R 41	41	200	5000
2,5 R 42	42	200	5000
2,5 R 43	43	200	5000
2,5 R 44	44	200	5000
2,5 R 45	45	200	5000
2,5 R 46	46	200	5000
2,5 R 47	47	200	5000
2,5 R 48	48	200	5000
2,5 R 49	49	200	5000
2,5 R 50	50	200	5000
2,5 R 51	51	200	5000
2,5 R 52	52	200	5000
2,5 R 53	53	200	5000
2,5 R 54	54	200	5000
2,5 R 55	55	200	5000
2,5 R 56	56	200	5000
2,5 R 57	57	200	5000
2,5 R 58	58	200	5000
2,5 R 59	59	200	5000
2,5 R 60	60	200	5000
2,5 R 61	61	200	5000
2,5 R 62	62	200	5000

**Packaging:**

in bulk, in a cardboard box