

24

2410 12

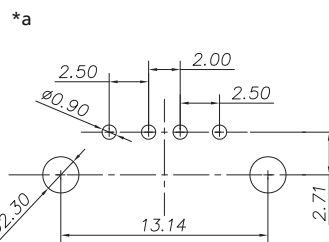
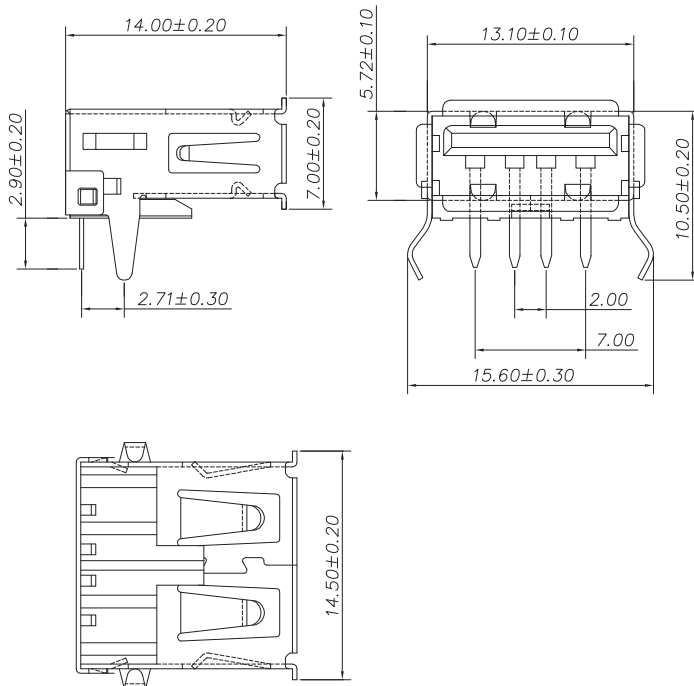
USB and IEEE 1394 connectors



USB 2.0 chassis socket type A, angular version, for printed circuit boards

24

2410 12



#### Environmental conditions

Temperature range -55 °C/+85 °C

#### Materials

Insulating body PBT, V-0 according to UL94  
Contact spring CuZn, gold-plated  
Housing Steel, nickel-plated



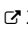


#### Mechanical data


Mating cycles 1500  
Insertion force ≤ 35 N  
Withdrawal force ≥ 10 N

#### Electrical data (at T<sub>amb</sub> 20 °C)

Contact resistance ≤ 30 mΩ  
Rated current ≤ 1 A  
Rated voltage 30 V DC  
Rated impulse voltage 500 V  
Insulation resistance ≥ 100 MΩ

#### Associated products

Counterparts  
 2410 07  2410 08  2431  
 2480  2482

Accessories  
 2412 01

\*a printed circuit board layout

24

2410 12

Designation	Pole Number	PU (Pieces)	MDQ (Pieces)
2410 12	4	100	500

**Packaging:**

in a tray