

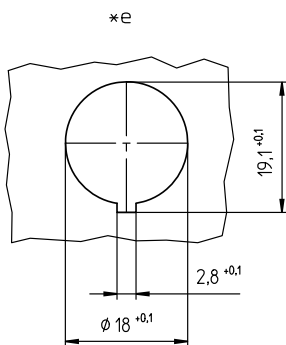
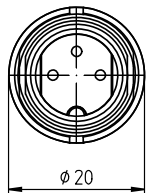
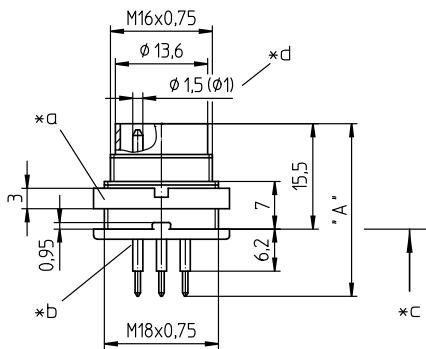
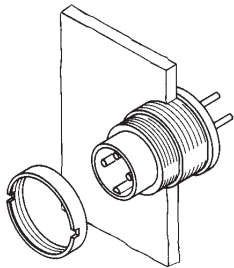
03 SGR

Circular connectors with threaded joint M16 acc. to IEC 61076-2-106, IP40/IP68



Chassis plug acc. to IEC 61076-2-106, IP 40, with threaded joint, for printed circuit boards, for back side mounting

**03 SGR**



**Environmental conditions**

Temperature range -40 °C/+85 °C

**Materials**

Insulating body PA GF, V-0 according to UL94  
 Contact pin CuZn, silver-plated and flash gold-plated, tin-plated in solder area (3-8 poles)  
 CuZn, pre-nickel and gold-plated, tin-plated in solder area (12 poles)  
 Housing Zn diecast, pre-copper and nickel-plated  
 Ring screw CuZn, nickel-plated

**Mechanical data**

Tightening torque connector 1-3 Nm  
 Tightening torque nut 1-3 Nm  
 Protection class IP40<sup>1</sup>

<sup>1</sup> according to IEC DIN EN 60529, only in locked condition with an appropriate counterpart

**Electrical data (at T<sub>amb</sub> 20 °C)**

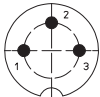
Rated current 5 A (T<sub>amb</sub> 40 °C, 3-8 poles)  
 3 A (T<sub>amb</sub> 40 °C, 12 poles)  
 Rated voltage with pollution degree 1:  
 300 V (versions 30, 40, 50/6, 60, 70)  
 100 V (versions 50, 71, 80, 81)  
 160 V (Polbild 120)  
 with pollution degree 2:  
 250 V (versions 30, 40)  
 32 V (versions 50, 71, 80, 81)  
 160 V (versions 50/6, 60, 70, 120)  
 Rated impulse voltage 1500 V (versions 30, 40, 50/6, 60, 70, 120)  
 500 V (versions 50, 71, 80, 81)  
 Material group II (IEC)/I (UL) (400 ≤ CTI < 600)  
 Overvoltage category I  
 Insulation resistance > 100 MΩ

**Associated products**

Counterparts  
 ☞ KV ☞ KV ...-8 ☞ WKV  
 Accessories  
 ☞ 0383 ☞ 038399 ☞ 0384  
 ☞ 0385 ☞ 038899

**03 SGR**

Pin configurations, solder side view



03-a  
SGR 30



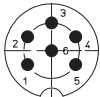
04-a  
SGR 40



05-b  
SGR 50



05-a  
SGR 50/6



06-a  
SGR 60



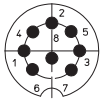
07-a  
SGR 70



07-b  
SGR 71



SGR 80



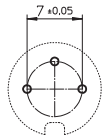
08-a  
SGR 81



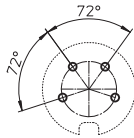
12-a  
SGR 120

**03 SGR**

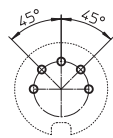
Printed circuit board layout, solder side view



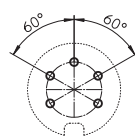
**03-a**  
SGR 30



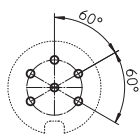
**04-a**  
SGR 40



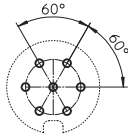
**05-b**  
SGR 50



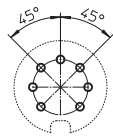
**05-a**  
SGR 50/6



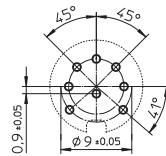
**06-a**  
SGR 60



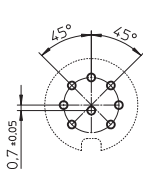
**07-a**  
SGR 70



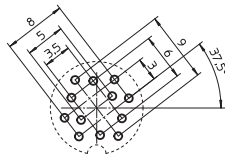
**07-b**  
SGR 71



**SGR 80**



**08-a**  
SGR 81



**12-a**  
SGR 120

- \*a nut enclosed separately
- \*b for bore hole of printed circuit board  
Ø 1.0 mm (SGR 30–81)  
Ø 0.7 mm (SGR 120)
- \*c mounting direction
- \*d 12 pole version Ø 1.0 mm
- \*e port in mounting plate

03 SGR

Designation	Pole Number	PU (Pieces)	MDQ (Pieces)	Dimensions A (mm)
SGR 30	3	50	100	25.4
SGR 40	4	50	100	25.4
SGR 50	5	50	100	25.4
SGR 50/6	5	50	100	25.4
SGR 60	6	50	100	25.4
SGR 70	7	50	100	25.4
SGR 71	7	50	100	25.4
SGR 80	8	50	100	25.4
SGR 81	8	50	100	25.4
SGR 120	12	50	100	24.8

**Packaging:**  
in a cardboard box