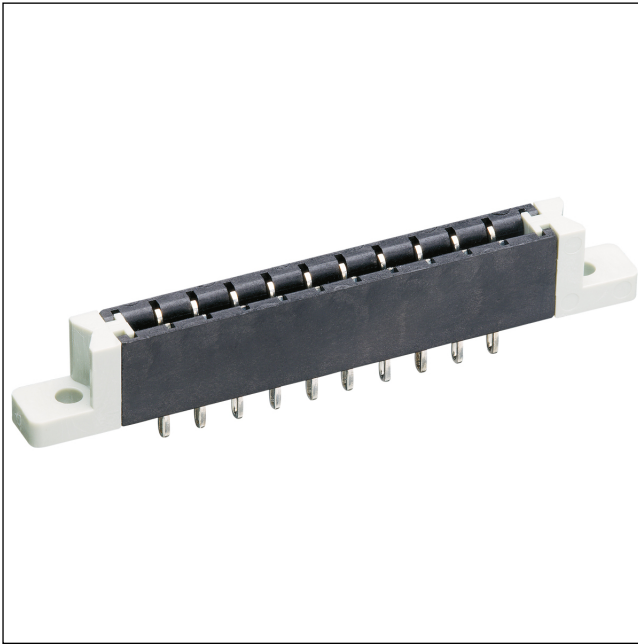


51

5,08 UF

Direct connectors for insert cards, pitch 2.5/2.54/5.0/ 5.08 mm



Socket board for direct mating, with mounted pair of flanges F, with solder eyes

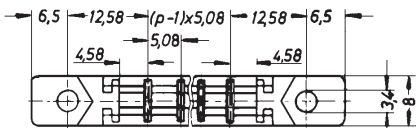
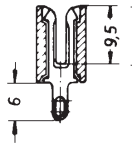
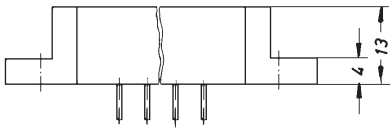
---

State: Phasing out

---

51

5,08 UF



#### Environmental conditions

Temperature range -25 °C/+100 °C

#### Materials

Insulating body PPO  
Contact spring CuSn, pre-nickel and tin-plated  
Flange PC

#### Mechanical data

Mating with Leiterplatte 1,5 ± 0,14 mm

#### Electrical data (at T<sub>amb</sub> 20 °C)

Contact resistance ≤ 3 mΩ  
Rated current 5 A  
Rated voltage 250 V AC  
Rated impulse voltage ≥ 3,0 kV

#### Associated products

Accessories

☞ FF

☞ SP 3

Designation	Pole Number	PU (Pieces)	MDQ (Pieces)
5,08 UF 03	3	200	2000
5,08 UF 04	4	200	2000
5,08 UF 05	5	200	2000
5,08 UF 06	6	200	2000
5,08 UF 07	7	200	2000
5,08 UF 08	8	200	2000
5,08 UF 09	9	200	2000
5,08 UF 10	10	200	2000
5,08 UF 11	11	200	2000
5,08 UF 12	12	200	2000
5,08 UF 13	13	200	2000
5,08 UF 14	14	200	2000
5,08 UF 15	15	200	2000
5,08 UF 16	16	200	2000
5,08 UF 17	17	200	2000
5,08 UF 18	18	200	2000
5,08 UF 19	19	200	2000
5,08 UF 20	20	200	2000
5,08 UF 21	21	200	2000
5,08 UF 22	22	200	2000
5,08 UF 23	23	200	2000
5,08 UF 24	24	200	2000
5,08 UF 25	25	200	2000
5,08 UF 26	26	200	2000
5,08 UF 27	27	200	2000
5,08 UF 28	28	200	2000
5,08 UF 29	29	200	2000
5,08 UF 30	30	200	2000
5,08 UF 31	31	200	2000

**Packaging:**

in bulk, in a cardboard box