

**SURFACE MOUNT
GLASS PASSIVATED BRIDGE RECTIFIERS**

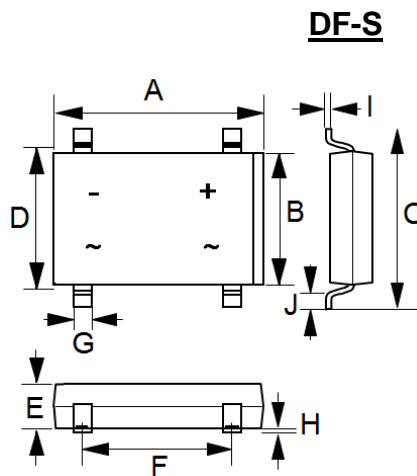
**REVERSE VOLTAGE – 50 to 1000 Volts
FORWARD CURRENT – 1.0 Ampere**

FEATURES

- Rating to 1000V PRV
- Ideal for printed circuit board
- Low forward voltage drop high current capability
- Reliable low cost construction utilizing molded plastic technique
- UL recognized file # E95060

MECHANICAL DATA

- Case Material: molding compound, UL flammability classification 94V-0
- Polarity: As marked on the body
- Mounting Position: Any
- Weight: 360mg (Approximate)



DF-S		
DIM	MIN	MAX
A	8.20	8.50
B	6.20	6.50
C	9.80	10.30
D	7.40	7.90
E	2.40	2.60
F	5.00	5.20
G	1.00	--
H	.076	.330
I	.220	.300
J	1.02	1.53
All dimension in millimeter		

MAXIMUM RATINGS AND ELECTRICAL CHARACTERISTICS

Ratings at 25°C ambient temperature unless otherwise specified.

ABSOLUTE RATINGS

PARAMETER	SYMBOL	DF005S	DF01S	DF02S	DF04S	DF06S	DF08S	DF10S	UNIT
Device marking code	Note	DF005S	DF01S	DF02S	DF04S	DF06S	DF08S	DF10S	--
Maximum repetitive peak reverse voltage	V_{RRM}	50	100	200	400	600	800	1000	V
Maximum DC blocking voltage	V_{DC}	50	100	200	400	600	800	1000	V
Average rectified output current per device @ $T_A = 40^\circ\text{C}$	$I_{(AV)}$	1.0							A
Peak forward surge current 8.3ms single half sine-wave superimposed on rated load (JEDEC METHOD)	I_{FSM}	50							A
Peak forward surge current 1ms single half sine-wave superimposed on rated load (JEDEC METHOD)	I_{FSM}	100							A
$I^2 t$ rating for fusing ($t < 8.3\text{ms}$)	$I^2 t$	10.4							A ² S
Operating and storage temperature range	T_J, T_{STG}	-55 to +150							°C

STATIC ELECTRICAL CHARACTERISTICS

PARAMETER	TEST CONDITION	SYMBOL	MAX.	UNIT
Forward voltage	$I_F = 1.0\text{A}$ $T_J = 25^\circ\text{C}$	V_F	1.1	V
Leakage current	V_R at rated $T_J = 25^\circ\text{C}$ $T_J = 125^\circ\text{C}$	I_R	10 500	uA
Typical junction capacitance (Note 1)		C_J	25	pF

THERMAL CHARACTERISTICS

PARAMETER	SYMBOL	TYP.	UNIT
Typical thermal resistance (Note 2)	R_{thJA} R_{thJC} R_{thJL}	40 8 20	°C/W

Note :

- (1) Measured at 1.0MHz and applied reverse voltage of 4.0V DC
- (2) Thermal resistance junction to ambient, case and lead in accordance with JESD-51. Unit mounted on P.C.B with 0.5 x 0.5" (13 x 13 mm) copper pad per pin.

REV. 11, SEP.-2020, KBDA01

Please be aware that an **Important Notice and Disclaimer** concerning availability, disclaimers, and use in Critical applications of LSC products thereto appears at the end of this Data Sheet.

RATING AND CHARACTERISTIC CURVES DF005S thru DF10S

LITEON

FIG.1- FORWARD CURRENT DERATING CURVE

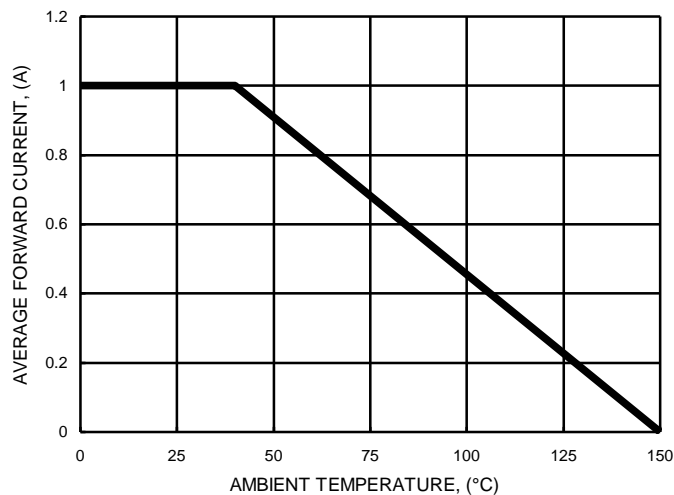


FIG.2- MAXIMUM NON-REPETITIVE SURGE CURRENT

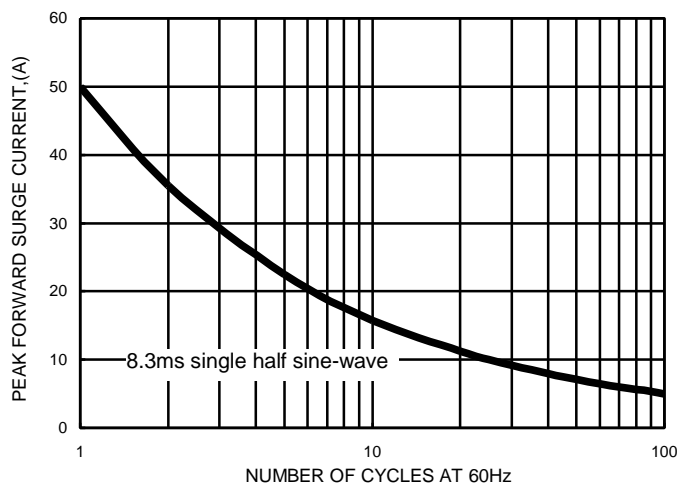


FIG.3- TYPICAL FORWARD CHARACTERISTICS

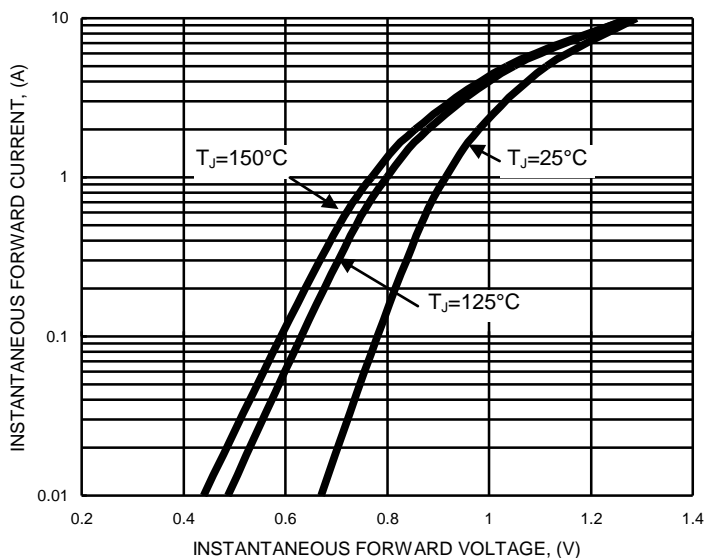


FIG.4- TYPICAL JUNCTION CAPACITANCE

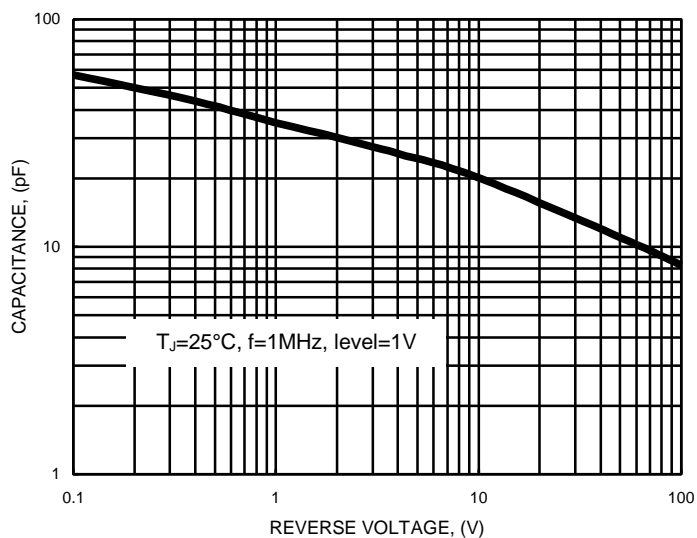


FIG.5- NON-REPETITIVE SURGE CURRENT

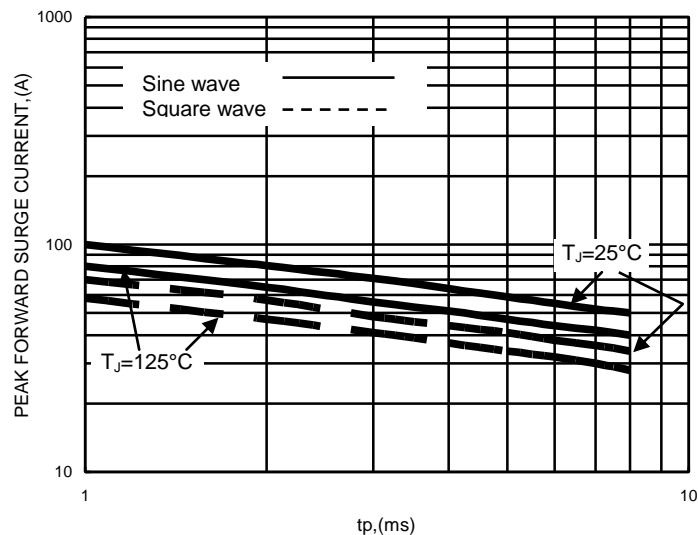
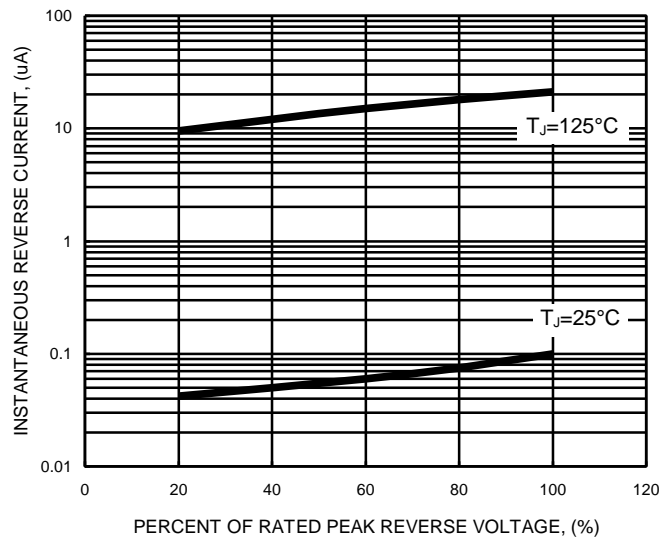


FIG.6- TYPICAL REVERSE CHARACTERISTICS



IMPORTANT NOTICE AND DISCLAIMER

LSC reserves the right to make changes to this document and its products and specifications at any time without notice. Customers should obtain and confirm the latest product information and specifications before final design purchase or use.

ALL INFORMATION ARE PROVIDED AS-IS, EVEN IT HAS QUALIFIED BY THE AEC-Q101 WHICH SATISFY INDUSTRIAL APPLICATION REQUIREMENT, EXCEPT AS EXPRESSLY STATED IN THIS DATA SHEET IS APPLIED FOR AUTOMOTIVE GRADE, LSC MAKE NO WARRANTIES, REPRESENTATION OR GUARANTEE, WHETHER EXPRESS, IMPLIED OR STATUTORY, INCLUDING, WITHOUT LIMITATION, REGARDING ANY MERCHANTABILITY, SATISFACTORY QUALITY, OR FITNESS FOR A PARTICULAR PURPOSE WITH RESPECT TO THE LSC TECHNOLOGY.

LSC DOES NOT ASSUME ANY LIABILITY OR COMPENSATION FOR ANY APPLICATION ASSISTANCE OR CUSTOMER PRODUCT DESIGN, AND MAKE NO WARRANTY OR ACCEPT ANY LIABILITY WITH PRODUCTS, WHICH ARE PURCHASED OR USED FOR ANY UNINTENDED OR UNAUTHORIZED APPLICATION.

No license is granted by implication or otherwise under any intellectual property rights of LSC.

LSC products are not authorized for use as critical components in life support devices or systems without express written approval of LSC.