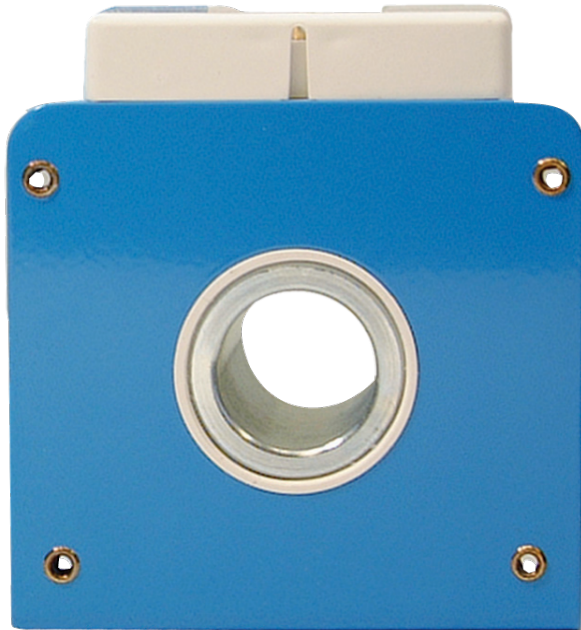


SE-CS30-SERIES (PGC-5000)



Current Sensor



Description

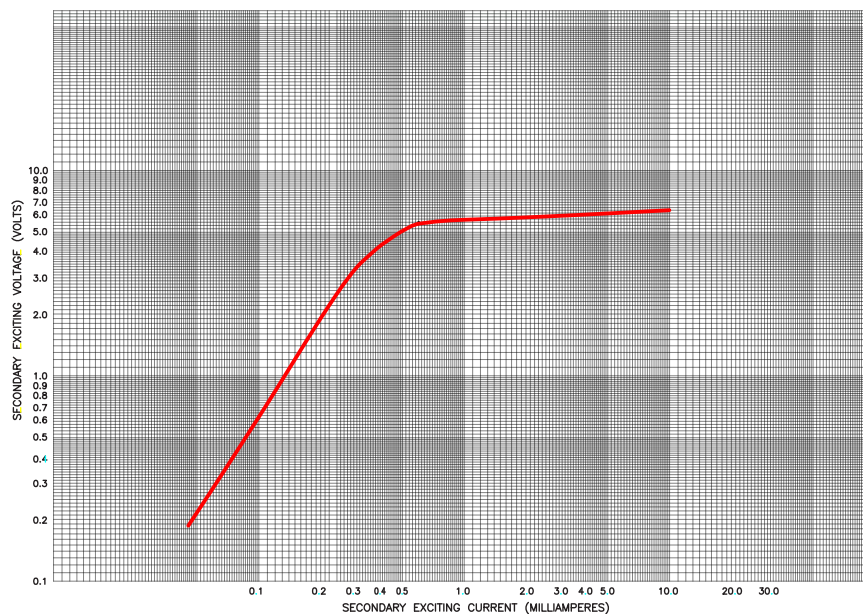
The SE-CS30-Series is a sensitive, nickel-core current transformer used with Littelfuse relays to detect low levels of earth-leakage current.

Specifications

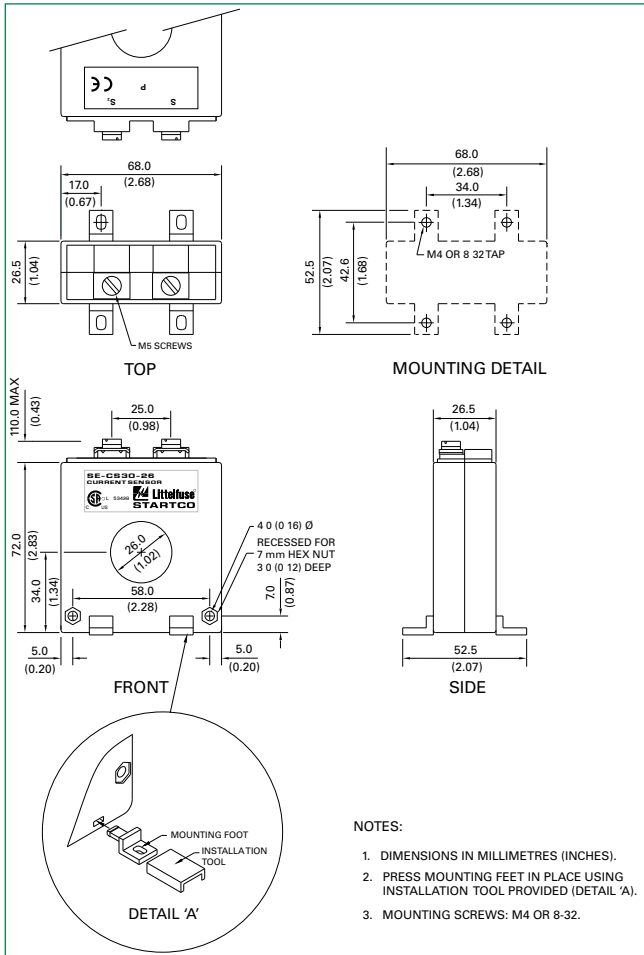
RATIO	600:1, 30:0.05 A rating
ACCURACY	0.01 VA 10P10 (± 3% @ Rated, ± 10% @ 10xRated) Saturation Knee Point = 5 V @ 0.5 mA
FREQUENCY	50-400 Hz
INSULATION LEVEL	600 V
APPLICATION	FPU-32, FPS, MPU-32, MPS, PGR-6100, SE-330, SE-701, SE-704

Ordering Information

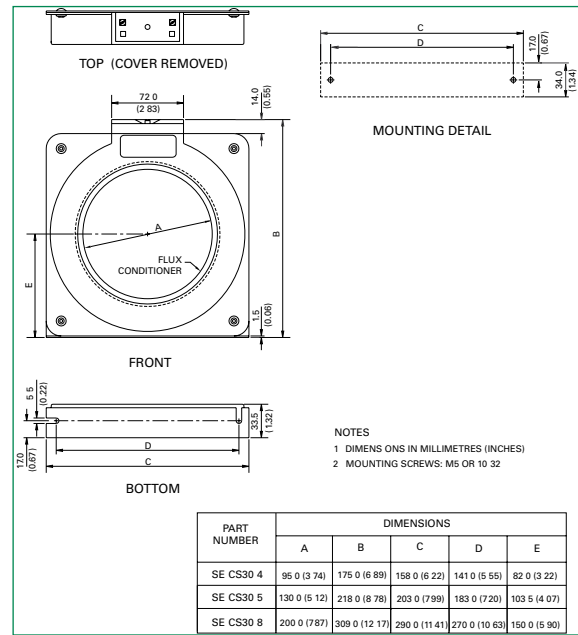
ORDERING NUMBER	WINDOW SIZE, 1D
SE-CS30-26 (PGC-5025)	26 mm (1.0")
SE-CS30-70 (PGC-5060)	70 mm (2.8")
SE-CS30-4 (PGC-5095)	95 mm (3.7")
SE-CS30-5 (PGC-5130)	130 mm (5.1")
SE-CS30-8 (PGC-5200)	200 mm (7.9")



SE-CS30-SERIES (PGC-5000)



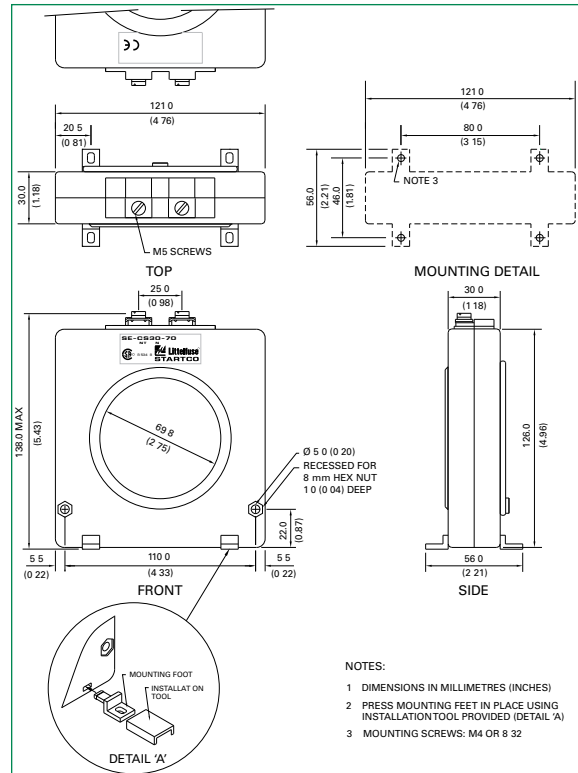
SE-CS30-26 SERIES OUTLINE DETAILS



SE-CS30 SERIES OUTLINE DETAILS

Weights

MODEL	WEIGHT
SE-CS30-26	0.2 kg (0.7 lbs)
SE-CS30-70	1.2 kg (2.5 lbs)
SE-CS30-4	1.9 kg (4.2 lbs)
SE-CS30-5	1.9 kg (4.2 lbs)
SE-CS30-8	1.9 kg (4.2 lbs)



SE-CS30-70 SERIES OUTLINE DETAILS