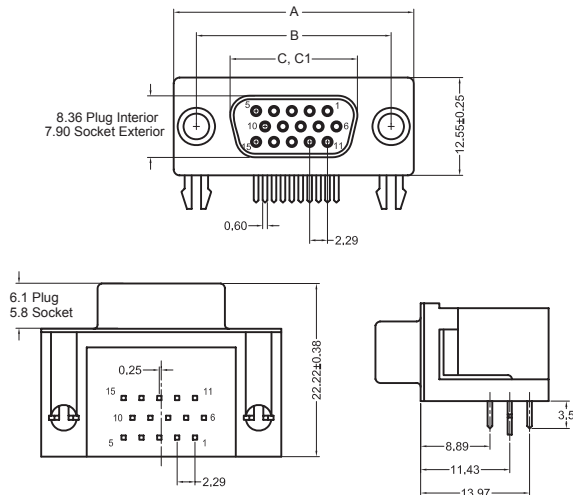


K66X Series High Density Right Angle PCB Mount

K66X Series Dimensions

Pictured with Board Lock Option, Dimensions in mm



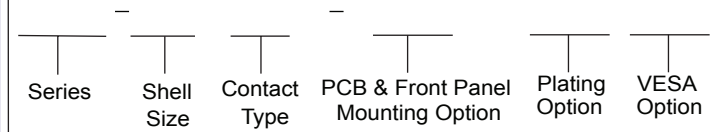
Shell Size	A		B		C		C1		D		E	
	In	mm	In	mm	In	mm	In	mm	In	mm	In	mm
15 (E)	±.015	±0.38	±.005	±0.13	±.010	±0.25	±.010	±0.25	±.005	±0.13	±.005	±0.13
	1.213	.984	.643	.666	.666	.090	.010	.010	30.81	24.99	16.33	16.92
26 (A)	1.541	1.312	.971	.994	.090	.020	.020	.020	39.14	33.32	24.66	25.25
	39.14	33.32	24.66	25.25	2.29	0.51	0.51	0.51				
44 (B)	2.088	1.852	1.511	1.534	.090	.020	.020	.020	53.04	47.04	38.38	38.96
	53.04	47.04	38.38	38.96	2.29	0.51	0.51	0.51				
62 (C)	2.729	2.500	2.159	2.182	.095	.023	.023	.023	69.32	63.50	54.84	55.42
	69.32	63.50	54.84	55.42	2.41	0.58	0.58	0.58				

C = Exterior of Female Shell (S) C1 = Interior of Male Shell (P)

D-SUBMINIATURE CONNECTORS

K66X Series

Ordering Information



Series

K66X - High Density D-Subminiature Connector, Right Angle PCB Termination, .350" Footprint

Shell Size-Contact Option

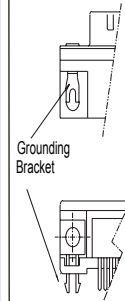
- E - 15 Contacts
- A - 26 Contacts
- B - 44 Contacts
- C - 62 Contacts

Contact Type

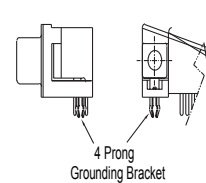
- P - Pin Contact (Plug)
- S - Socket Contact (Receptacle)

PC Board Mounting Option

N Option

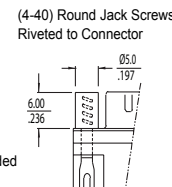
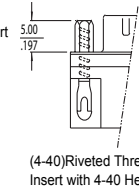
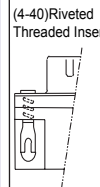


NV Option



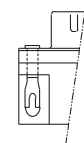
Front Panel Mounting Option

Standard J Option R Option



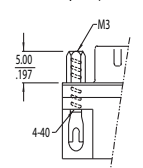
T Option (Not available w/ NV Option)

Riveted Non-Threaded Insert 3.18/.125" Dia.



JM Option (Not available w/ NV Option)

(Not available w/ NV Option)



(4-40) Riveted Threaded Insert with M3/4-40 Hex. JS-M3131 Jack Screws Installed to Connector

Plating Option

- Blank - Gold Flash
- 15 - 15µ" Gold
- 30 - 30µ" Gold

VESA Option

- Blank - Standard
- VESA - VESA Compliant Version (E15S Only)

Contact Kycon for other options