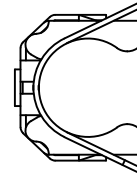
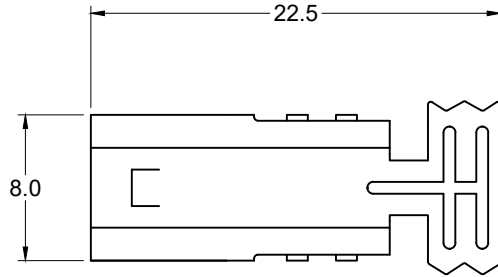


Rear Shell

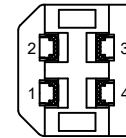
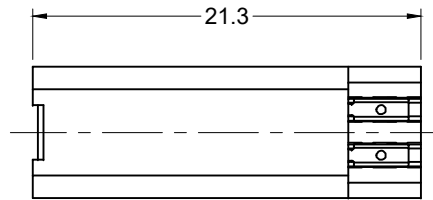
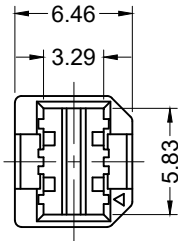


**Materials and Finish**

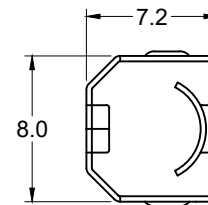
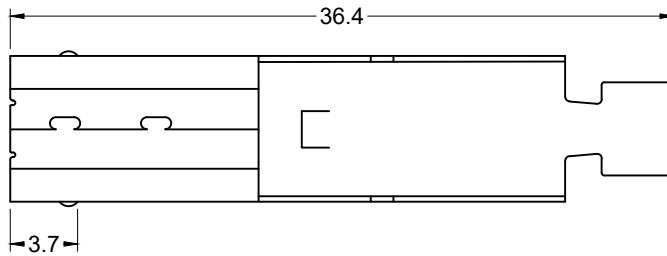
Shell:  
Steel or Phosphor Bronze  
0.30mm thickness

Insulator:  
PBT Thermoplastic  
UL 94V-0 Rated  
White Color

Insulator Body



Front Shell



Tolerances

X.X ± 0.25  
X.XX ± 0.15  
Unless Stated  
Otherwise

**RoHS COMPLIANT**

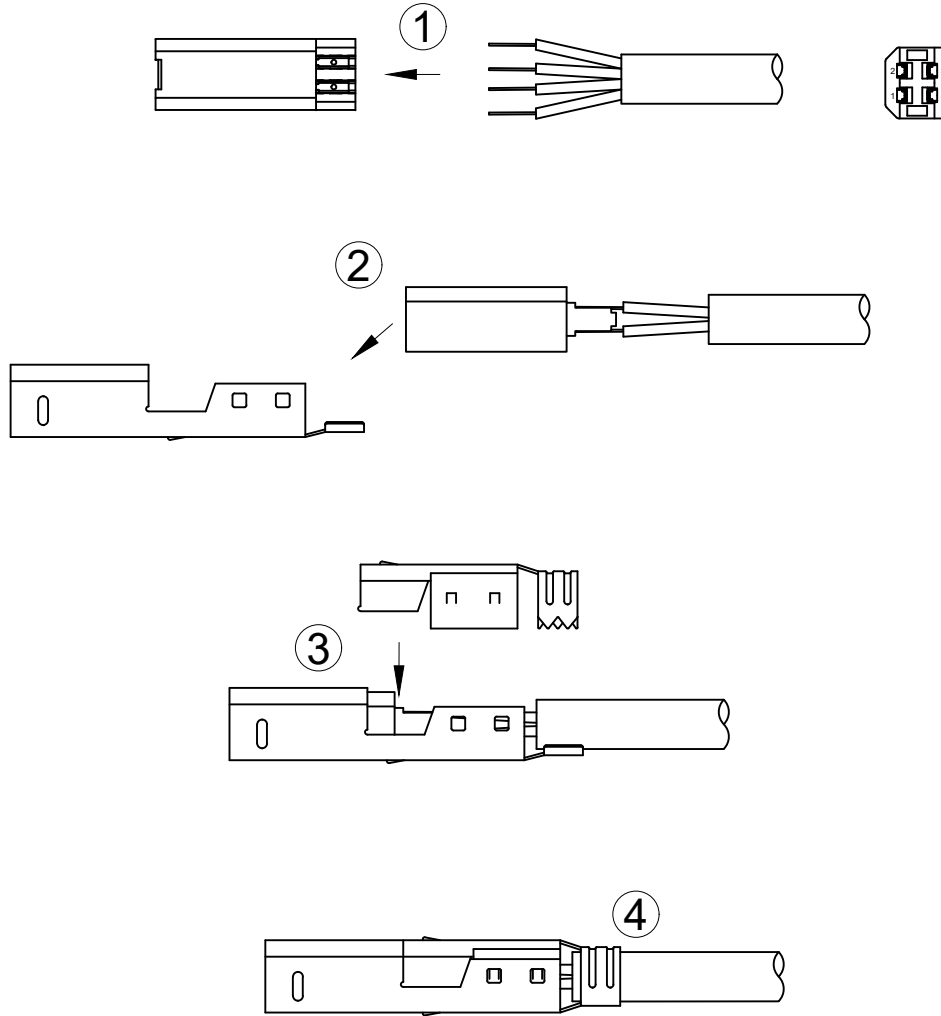
REV.	DATE	DESCRIPTION	REV. BY	CHK. BY	DRAWN BY	DATE
A1	6/27/05	New Drawing	N.Chang	C. Furumasu	N.Chang	6/27/05
B1	03/11/10	ECO #10-016	S. Vien	H. MA		
B2	10/07/10	ECO #10-070	S. Vien	H. MA		
B3	09/17/18	Update Address & Page 2	C. Kelleher	C. Furumasu		

**KUSBX-BP-KIT-SC**

USB B-type Plug Assembly, RoHS Compliant

With Solder Cup ends, Page 1 of 2





*Assembly Instructions*

- 1) Solder cable wires to Insulator Body.
- 2) Place Insulator Body/cable wires assembly into Front Shell and push forward until firmly seated in place.
- 3) Snap Rear Shield onto Front Shield.
- 4) Crimp Rear Shield tail over Front Shield.

Tolerances
X.X ± 0.25
X.XX ± 0.15
Unless Stated
Otherwise

REV.	DATE	DESCRIPTION	REV. BY	CHK. BY	DRAWN BY	DATE
					N.Chang	6/27/05

**KUSBX-BP-KIT-SC**

USB B-type Plug Assembly, RoHS Compliant

With Solder Cup ends, Page 2 of 2

