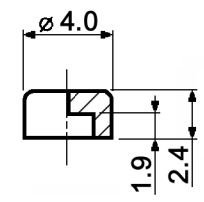
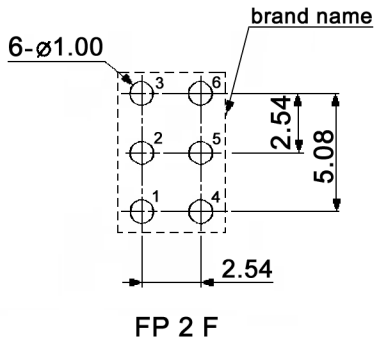
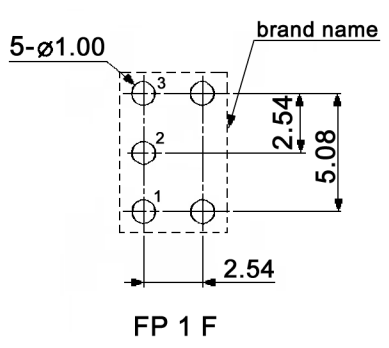


Plastic caps:

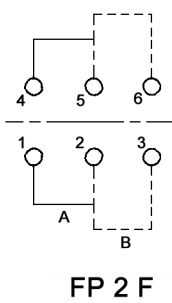
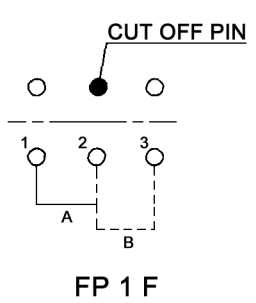


- black KF 4105
- grey KF 4107
- red KF 4109
- white KF 4110

P.C.B. MOUNTING HOLE DIMENSIONS  
(TOP VIEW)



CIRCUIT DIAGRAM  
(BOTTOM VIEW)



Tolerances:	Date	Name	<h1>FP 1 F / FP 2 F</h1>
	01/09	dr	
Circuit diagram	11/11	dr	<h2>20 25 69</h2>
Temperatures	04/11	dr	
Modifications	Date	Name	<b>knitter-switch</b>
			Page
			1/2

Specifications:

Contact rating: max.: 0.4VA, 28V DC  
 min.: 1µA, 20mV DC  
 Contact resistance: 100mOhm max.  
 Insulation resistance: 500MOhm min. at 250V DC  
 Operating temperature: -40°C to +85°C  
 Storage temperature: -40°C to +85°C  
 Mechanical life: min. 30 000 cycles  
 Soldering conditions: auto-soldering: max.: 250 +/-5°C, 7sec.  
 max.: 270 +/-5°C, 5sec.  
 Mounting: on pc-board  
 ESD resistance: 8kV min. (between lever and terminals)  
 Switching function: on - mom  
 Material: Contacts: phosphor bronze, gold plated  
 Terminals: PC terminals, crimped, phosphor bronze, gold plated  
 Case / lever: PES, UL94V-0, washable



Tolerances:			Date	Name	<b>FP 1 F / FP 2 F</b>
			01/09	dr	
			<b>knitter-switch</b>		<b>20 25 69</b>
					Page
					2/2
Modifications	Date	Name			