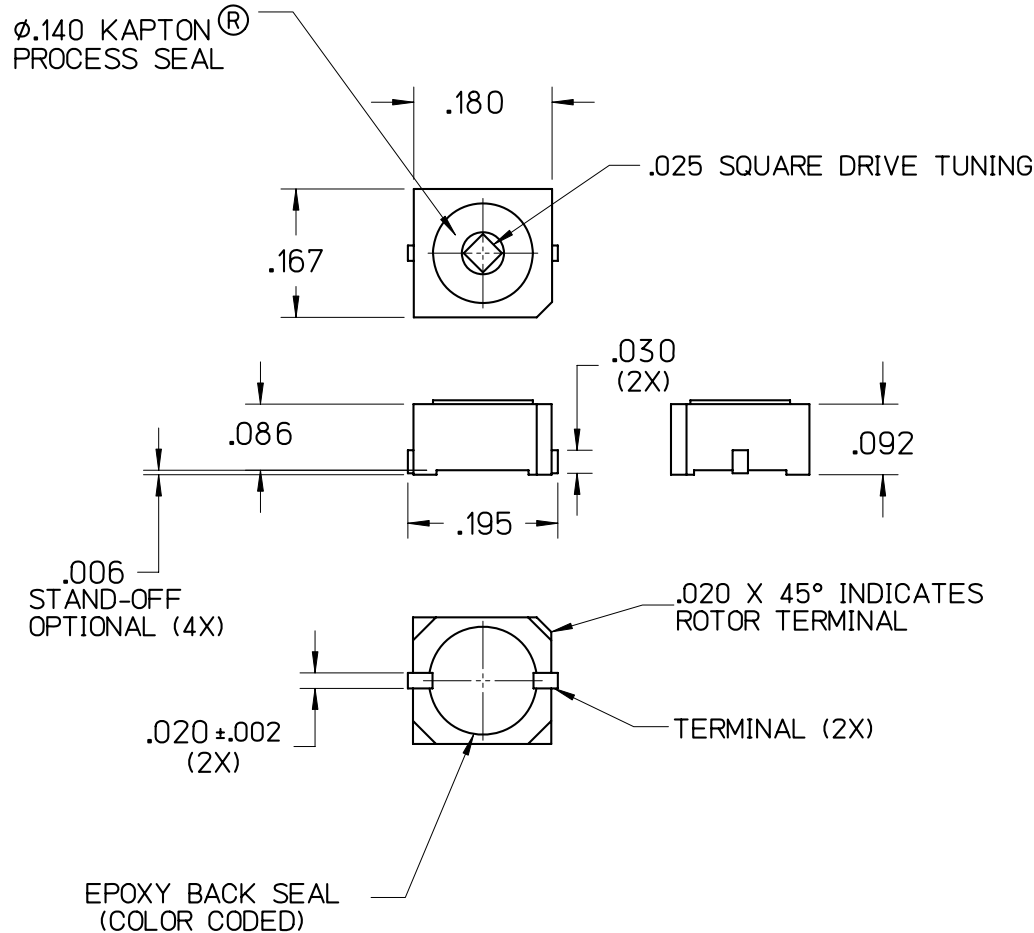


JMC P/N	CAPACITANCE	Q @ 100 MHz	COLOR CODE
2322-0G	0.6 TO 2.5 pF	> 3000	RED
2322-1G	1.0 TO 5.0 pF	> 1000	BLUE
2322-2G	2.5 TO 10 pF	> 1000	BLACK
2322-3G	7.5 TO 18 pF	> 500	CLEAR
2322-4G	8.5 TO 25 pF	> 300	GREEN



MI DRG. NO. 2322GE REV. **2322G E**
CERA-TRIM[®] CAPACITOR

SPECIFICATIONS	FILE: THINOUT
CAPACITY RANGE	SEE TABLE
WORKING VOLTAGE	250 VDC (TEST VOLTAGE 500 VDC)
Q @ 100 MHz	SEE TABLE
INSULATION RESISTANCE	> 10^4 MEGOHMS
TEMPERATURE RANGE	-55°C TO +125°C
TORQUE	0.05 TO 1.0 OZ. IN.
MOISTURE SENSITIVITY	MIL-STD-202 METHOD 106
SHOCK	100 g @ 6 ms
VIBRATION	15 g @ 10-2000 Hz
SETTING DRIFT	< 1%
CERAMIC DIELECTRIC STRUCTURE	
GOLD FINISH TERMINALS	
RoHS COMPLIANT	

E	10/07/10	NK	MAI	MAI	000870
D	10/31/06	MAI	MAI	MAI	000464
C	06/26/06	MLD	MAI	MAI	000411
B	06/20/05	MLD	MAI	JHT	000233
A	03/23/05	MAI	-	-	000194
LEVEL	DATE	DRN.	CHK.	APP.	ECN

REVISIONS

DRN.	CHK.	APP.	SCALE
MAI	MAI	DCR	4" = 1"
DATE	DATE	DATE	.XX ± .015
03/23/05	03/23/05	03/23/05	.XXX ± .005



JOHANSON MANUFACTURING CORPORATION
 ROCKAWAY VALLEY ROAD, BOONTON, N.J. 07005 (973)334-2676 FAX (973)334-2954
 ELECTRONIC ACCURACY THROUGH MECHANICAL PRECISION