

TLS810B1EJV50 BOARD

Overview



Description:

The

[TLS810B1EJ v50 \(/cms/en/product/power/linear-voltage-regulator/linear-voltage-regulator-automotive/TLS810B1EJ+V50/productType.html?productType=5546d46258f240be0158f71732907ad4\)](/cms/en/product/power/linear-voltage-regulator/linear-voltage-regulator-automotive/TLS810B1EJ+V50/productType.html?productType=5546d46258f240be0158f71732907ad4)

is a linear voltage regulator featuring wide input voltage range, low drop out voltage and ultra low quiescent current. With an input voltage range of 2.75 V to 42 V and ultra low quiescent of only 5.5 μ A, the regulator is perfectly suitable for automotive or any other supply systems connected permanently to the battery. The TLS810B1xxV50 is the fixed 5 V output version with an accuracy of 2% and output current capability up to 100 mA. The new regulation concept implemented in TLS810B1 combines fast regulation and very good stability while requiring only a small ceramic capacitor of 1 μ F at the output. The tracking region starts already at input voltages of 2.75 V (extended operating range). This makes the TLS810B1 also suitable to supply automotive systems that need to operate during cranking condition. Internal protection features like output current limitation and overtemperature shutdown are implemented to protect the device against immediate damage due to failures like output short circuit to GND, over-current and over-temperature. The device can be switched on and off by the Enable feature. When the device is switched off, the current consumption is typically less than 1 μ A.

Summary of Features:

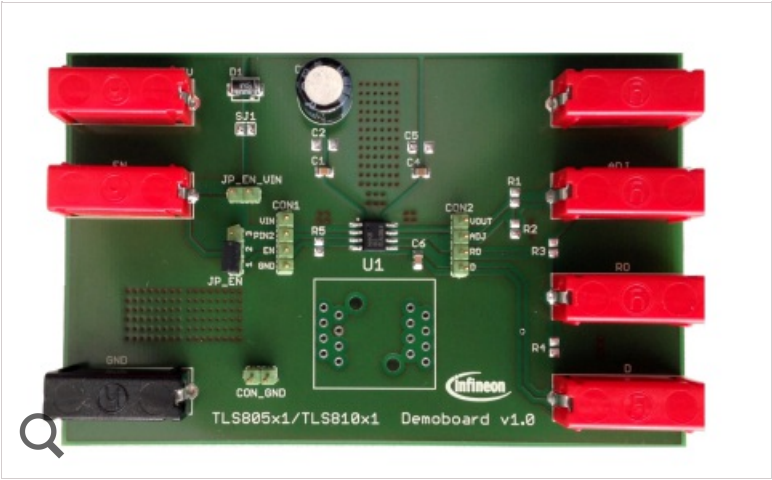
- Ultra Low Quiescent Current of 5.5 μ A
- Wide Input Voltage Range of 2.75 V to 42 V
- Output Current Capacity up to 100 mA
- Off Mode Current Less than 1 μ A
- Low Drop Out Voltage of typ. 200mV @ 100 mA
- Output Current Limit Protection
- Overtemperature Shutdown
- Enable
- Available in PG-DSO-8 EP Package
- Available in PG-TSON-10 Package
- Wide Temperature Range
- Green Product (RoHS Compliant)
- AEC Qualified

Benefits:

- Functional input voltage reange starts at 2.75 V and very low dropout voltage -> suitable for cranking
- Ultra-low quiescent current and current consumption -> power saving for battery
- Stable with 1 μ F output capacitor -> PCB space and cost savings
- Excellent transient robustness -> smaller input capacitors hence lower input filtering costs

Target Applications:

- Applicatoins with direct battery connection
- Automotive general ECUs
- Infotainment, alarm, dashboard
- RKE, immobilizer, gateway



Parametrics

Parametrics	TLS810B1EJV50 BOARD
Configuration	TLS810B1EJV50
Family	Linear Voltage Regulator (LDO)
Input Type	DC
Output Current	100.0 mA
Output Voltage	3.3 V
Product Description	Evaluation board for Low Quiescent Current LDO TLS805/TLS810 DSO8/DSO8-EP
Product Name	TLS810B1EJV50 BOARD
Qualification	Automotive
Supply Voltage min max	2.75 V 42.0 V
Target Application	Automotive
Topology	Linear
Type	Demo Board

Documents

+ Application Notes



TLS8xxx1xJ Demoboard (/dgd/Infineon-Z8F56638910-TLS8xxx1xJ-Demoboard-AN-v01_00-EN.pdf?fileId=5546d46259d9a4bf015a424127c2725b)
> EN (/dgd/Infineon-Z8F56638910-TLS8xxx1xJ-Demoboard-AN-v01_00-EN.pdf?fileId=5546d46259d9a4bf015a424127c2725b)
01_00 | 2017-02-15 | pdf | 830 KB

Order

▼

Sales Product Name	TLS810B1EJV50 BOARD
OPN	TLS810B1EJV50BOARDTOBO1
Product Status	on request
Package name	--
Order online	
Completely lead free	
Halogen free	
RoHS compliant	no
Packing Size	1
Packing Type	CONTAINER
Moisture Level	
Moisture Packing	NON DRY

Support

▼



Call us Toll Free
免费热线联系我们



(/cms/en/about-infineon/company/contacts/service-center/)

Find an answer to your question

Technical Assistance Center (TAC)

Infineon welcomes your comments and questions.

If you have any questions concerning our products, please fill out the following form. Your inquiry will be sent to the appropriate specialist who will be in touch with you as soon as possible.

You will receive a confirmation E-mail to validate your address in our system. Any attached file to the reply which will help to support your inquiry is highly appreciated.

First Name*

Last Name*

E-Mail*

Phone

Company*

Company website (URL)

Industry*

[Please select]



[please select]

Other Industry

Country / Territory*

[please select]

Preferred Distributor / Reseller*

[please select]

Other Distributor / Reseller

Product Name*

TLS810B1EJV50 BOARD

Estimated annual production volume (pieces) per year*

[please select]

Please post your technical question as detailed as possible*

I agree that my personal data can be gathered and processed by Infineon Technologies AG and its licensed partners.*

☐

I would like to receive newsletter informing me about Infineon products. (You can cancel the free subscription any time.)

☐

For more information about our privacy policy please click on > Privacy Policy (/cms/en/about-infineon/privacy-policy/)



Submit Reset

All fields marked with an asterisk (*) are mandatory.

Support forum

In order to optimize your browsing experience Infineon uses cookies. You agree to the usage of cookies when you continue browsing this site. Please read our > **Privacy Policy (/cms/en/about-infineon/privacy-policy/)** for more information.

OK