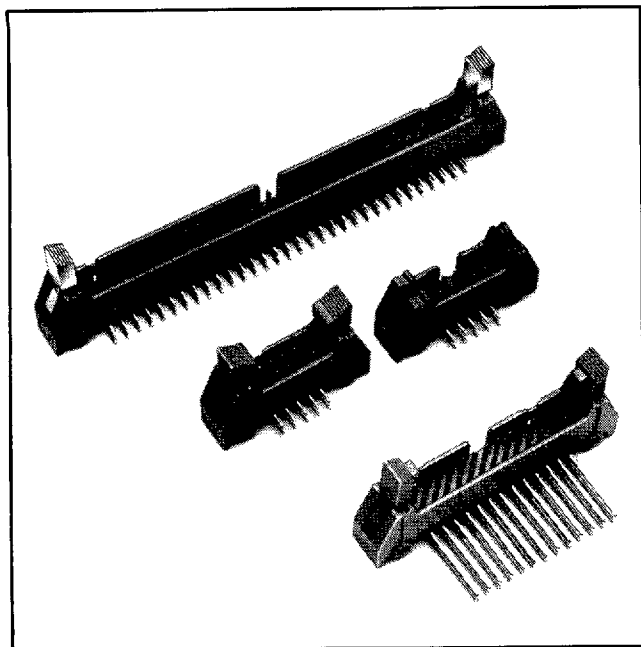


# .100" x .100" Latch/Ejector Header

Right Angle, 4 Wall



- Military (with 3M's 3518 polarizing key) and center bump polarizations available
- Optional ejector latches
- Mounting holes for securing header to board
- Shrouded to protect against physical and chemical pin damage
- Solder tail and wrap tail options

TS-0160-10  
Sheet 1 of 4

83

## Physical

### Insulation

Material: Glass Filled Polyester (PBT)  
Flammability: UL 94V-0  
Color: Gray

### Contact

Material: Phosphor Bronze (C510)  
Plating  
Underplate: 100  $\mu$ " [ 2.54  $\mu$ m ] Nickel — QQ-N-290, Class 2  
Wiping Area: 30  $\mu$ " [ 0.76  $\mu$ m ] Gold — MIL-G-45204, Type II, Grade C  
Solder Tails: 200  $\mu$ " [ 5.08  $\mu$ m ] 60/40 Tin Lead — MIL-P-81728  
Wrap Tails: Gold Flash  
Marking: 3M Logo, Part Identification Number and Orientation Triangle

## Electrical

Current Rating: 1 A  
Insulation Resistance:  $>1 \times 10^9 \Omega$  at 500 Vdc  
Withstanding Voltage: 1000 Vrms at Sea Level

## Environmental

Temperature Rating:  $-55^\circ\text{C}$  to  $+105^\circ\text{C}$

UL File No.: E68080  
CSA File No.: LR 40971

3M Electronic Products Division

6801 River Place Blvd.  
Austin, TX 78726-9000

9005413 0000225 221

# .100" x .100" Latch/Ejector Header

Right Angle, 4 Wall

Sheet 2 of 4

| Pln Qty | 3M Part Number | Dimensions      |                |                  |         |         |        | Polarization Notches Provided |
|---------|----------------|-----------------|----------------|------------------|---------|---------|--------|-------------------------------|
|         |                | A               | B              | C                | D       |         | H      |                               |
| 10      | 3446-50XX      | 1.26<br>[32.0]  | .71<br>[18.0]  | .865<br>[21.97]  | 2.00    | [50.8]  | 1.14   | [29.0]                        |
|         | 2.18           |                 |                |                  | [55.4]  | 1.32    | [33.5] |                               |
|         | 2.10           |                 |                |                  | [53.3]  | 1.24    | [31.5] |                               |
| 10      | 3662-50XX      | 1.26<br>[32.0]  | .71<br>[18.0]  | .865<br>[21.97]  | 2.00    | [50.8]  | 1.14   | [29.0]                        |
|         | 2.18           |                 |                |                  | [55.4]  | 1.32    | [33.5] |                               |
|         | 2.10           |                 |                |                  | [53.3]  | 1.24    | [31.5] |                               |
| 14      | 3314-50XX      | 1.46<br>[37.1]  | .91<br>[23.1]  | 1.065<br>[27.05] | 2.20    | [55.9]  | 1.14   | [29.0]                        |
|         | 2.38           |                 |                |                  | [60.5]  | 1.32    | [33.5] |                               |
|         | 2.30           |                 |                |                  | [58.4]  | 1.24    | [31.5] |                               |
| 16      | 3408-50XX      | 1.56<br>[39.6]  | 1.01<br>[25.7] | 1.165<br>[29.59] | 2.30    | [58.4]  | 1.14   | [29.0]                        |
|         | 2.48           |                 |                |                  | [63.0]  | 1.32    | [33.5] |                               |
|         | 2.49           |                 |                |                  | [61.0]  | 1.24    | [31.5] |                               |
| 20      | 3428-50XX      | 1.76<br>[44.7]  | 1.21<br>[30.7] | 1.365<br>[34.67] | 2.50    | [63.5]  | 1.14   | [29.0]                        |
|         | 2.68           |                 |                |                  | [68.1]  | 1.32    | [33.5] |                               |
|         | 2.60           |                 |                |                  | [66.0]  | 1.24    | [31.5] |                               |
| 24      | 3627-50XX      | 1.96<br>[49.8]  | 1.41<br>[35.8] | 1.565<br>[39.75] | 2.50    | [63.5]  | 1.14   | [29.0]                        |
|         | 2.68           |                 |                |                  | [68.1]  | 1.32    | [33.5] |                               |
|         | 2.60           |                 |                |                  | [66.0]  | 1.24    | [31.5] |                               |
| 26      | 3429-50XX      | 2.06<br>[52.3]  | 1.51<br>[38.4] | 1.665<br>[42.29] | 2.80    | [71.1]  | 1.14   | [29.0]                        |
|         | 2.98           |                 |                |                  | [75.7]  | 1.32    | [33.5] |                               |
|         | 2.90           |                 |                |                  | [73.7]  | 1.24    | [31.5] |                               |
| 30      | 3440-50XX      | 2.26<br>[57.4]  | 1.71<br>[43.4] | 1.865<br>[47.37] | 3.00    | [76.2]  | 1.14   | [29.0]                        |
|         | 3.18           |                 |                |                  | [80.8]  | 1.32    | [33.5] |                               |
|         | 3.10           |                 |                |                  | [78.7]  | 1.24    | [31.5] |                               |
| 34      | 3431-50XX      | 2.46<br>[62.5]  | 1.91<br>[48.5] | 2.065<br>[52.45] | 3.20    | [81.3]  | 1.14   | [29.0]                        |
|         | 3.38           |                 |                |                  | [85.9]  | 1.32    | [33.5] |                               |
|         | 3.30           |                 |                |                  | [83.8]  | 1.24    | [31.5] |                               |
| 40      | 3432-50XX      | 2.76<br>[70.1]  | 2.21<br>[56.1] | 2.365<br>[60.07] | 3.50    | [88.9]  | 1.14   | [29.0]                        |
|         | 3.68           |                 |                |                  | [93.5]  | 1.32    | [33.5] |                               |
|         | 3.60           |                 |                |                  | [91.4]  | 1.24    | [31.5] |                               |
| 50      | 3433-50XX      | 3.26<br>[82.8]  | 2.71<br>[68.8] | 2.865<br>[72.77] | 4.00    | [101.6] | 1.14   | [29.0]                        |
|         | 4.18           |                 |                |                  | [106.2] | 1.32    | [33.5] |                               |
|         | 4.10           |                 |                |                  | [104.1] | 1.24    | [31.5] |                               |
| 60      | 3372-50XX      | 3.76<br>[95.5]  | 3.21<br>[81.5] | 3.365<br>[85.47] | 4.50    | [114.3] | 1.14   | [29.0]                        |
|         | 4.68           |                 |                |                  | [118.9] | 1.32    | [33.5] |                               |
|         | 4.60           |                 |                |                  | [116.8] | 1.24    | [31.5] |                               |
| 64      | 3764-50XX      | 3.96<br>[100.7] | 3.41<br>[86.6] | 3.565<br>[90.55] | 4.70    | [119.4] | 1.14   | [29.0]                        |
|         | 4.88           |                 |                |                  | [124.0] | 1.32    | [33.5] |                               |
|         | 4.80           |                 |                |                  | [121.9] | 1.24    | [31.5] |                               |

| 3M Part No. Suffix | Contact Tail   | Dim E            | Dim F                   |                           |           | Dim G                         |
|--------------------|--|------------------|-------------------------|---------------------------|-----------|-------------------------------|
| -5XX2              | Solder Tail for .062 [ 1.57 ] Thick PC Board                 | .112 [ 2.84 ]    | .0245 ± .0005 [ 0.622 ] | with .028 ± .001 [ 0.71 ] | Diagonals | .035 ± .003 [ 0.89 ] (Note 3) |
| -5X03              | Solder Tail for .094 to .125 [ 2.39 to 3.18 ] Thick PC Board | .155 [ 3.94 ]    | .0245 ± .0005 [ 0.622 ] | with .028 ± .001 [ 0.71 ] | Diagonals | .035 ± .003 [ 0.89 ]          |
| -5X05              | Wire Wrap Tail for up to 3 Levels of Wire Wrap               | .61 [ 15.5 ] Ref |                         | .025 ± .002 [ 0.64 ]      |           | .045 ± .003 [ 1.14 ]          |

**Notes:**

- Notches A & C will accommodate 3M Polarizing Keys (3M Part Number 3518 or M3518).
- Accepts rear and front entry: mounting hardware: #4-24 thread cutting screw, 3M Part #3341-5 (.116 [ 2.95 ] dia mounting hole). Front Entry (prior to installation of Latch): #2-56 bolt and nut. 3M Part #3341-6 (.106 [ 2.69 ] dia mounting hole).
- The recommended PCB hole size for the kinked tail positions on the .112" solder tail connector is .035" ± .002.

**Inch**  
[mm]

| Tolerance Unless Noted |      |       |        |
|------------------------|------|-------|--------|
|                        | .0   | .00   | .000   |
| Inch                   | ± .1 | ± .01 | ± .005 |

[ ] Dimensions for Reference Only

## Ordering Information

XXXX-5XXX

3M Part Number

Ejector/Latch System  
 0 = No Ejector/Latch  
 2 = Short Ejector/Latch (when non-strain relief socket is used.)  
 3 = Long Ejector/Latch (when socket with strain relief is used.)  
 4 = Ejector Only

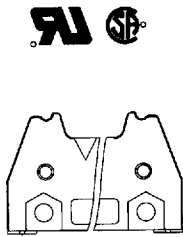
Tail

02 = Solder Tails for .062 [ 1.57 ] Thick Board.  
 K2 = Kinked Solder Tails for .062 [ 1.57 ] Thick Board.  
 03 = Solder Tails for .094 to .125 [ 2.39 to 3.18 ] Thick Board.  
 05 = Wrap Tails for up to 3 Levels of Wire Wrap.

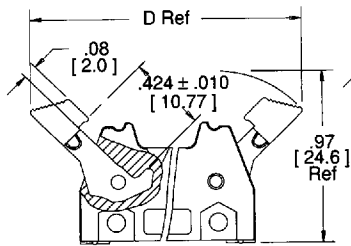
# .100" x .100" Latch/Ejector Header

Right Angle, 4 Wall

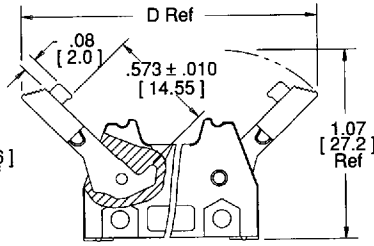
-50XX  
Header With  
No Ejector/Latch



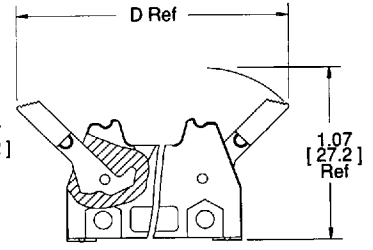
-52XX  
Header With  
Short Ejector/Latch  
(3M Part No. 3505-2)  
for 3M Sockets Without  
Strain Relief



-53XX  
Header With  
Long Ejector/Latch  
(3M Part No. 3505-3)  
for 3M Sockets With  
Strain Relief

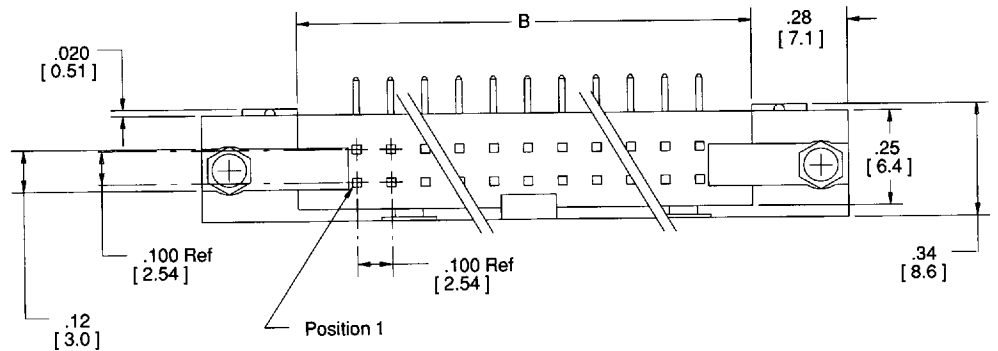


-54XX  
Header With  
Ejector Only  
(3M Part No. 3505-4)

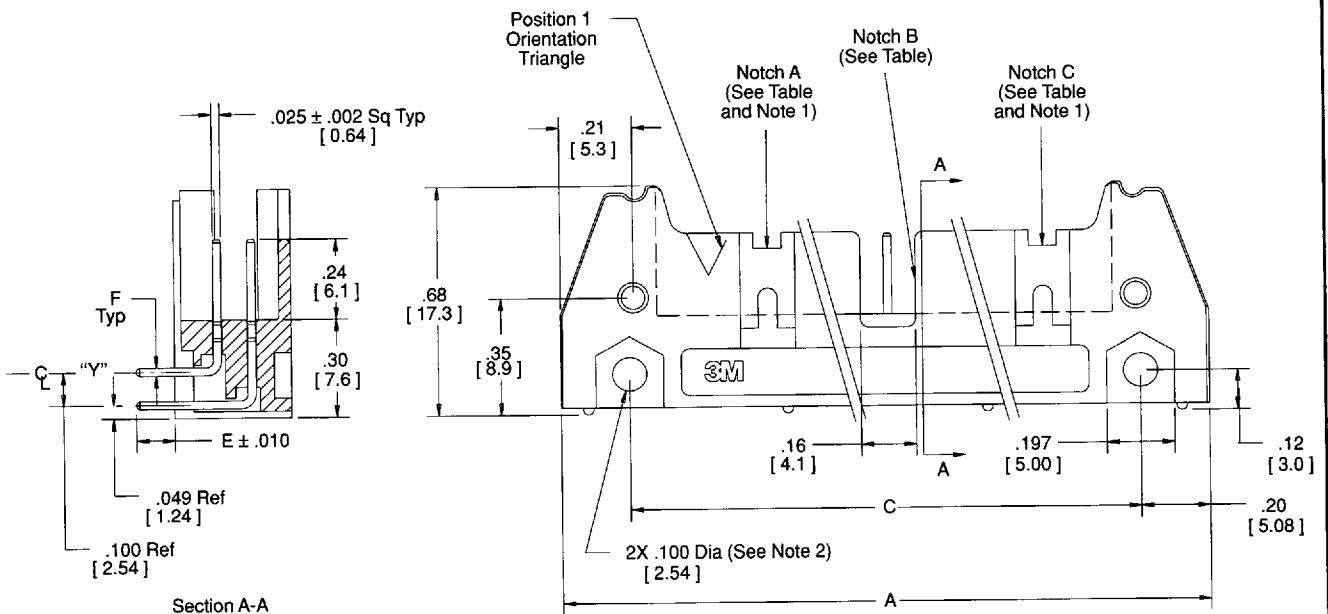


Note - This Ejector  
is a Nickel Plated  
Zinc Alloy Casting.

Sheet 3 of 4



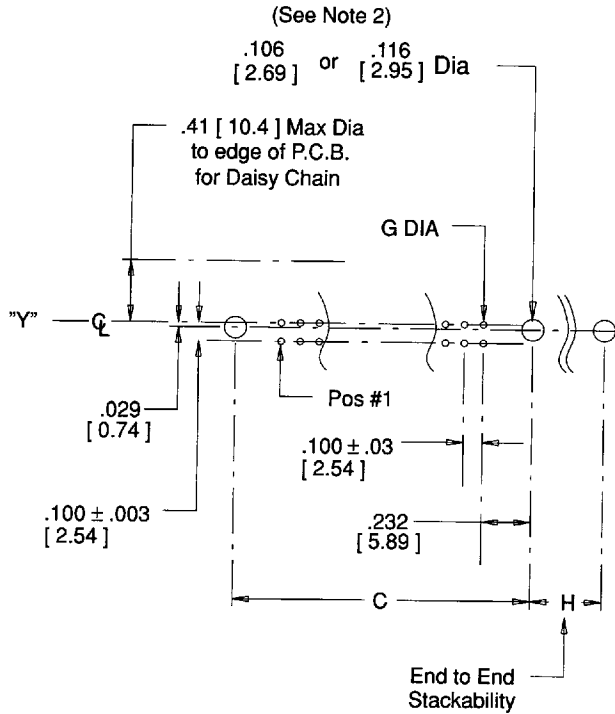
TS-0160-10



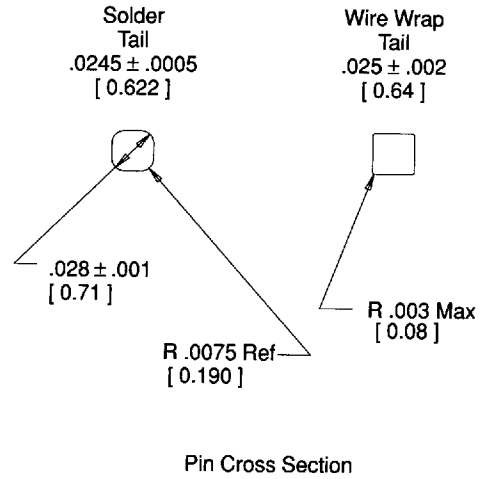
# .100" x .100" Latch/Ejector Header

Right Angle, 4 Wall

Sheet 4 of 4



Recommended Mounting Hold Pattern



TS-0160-10