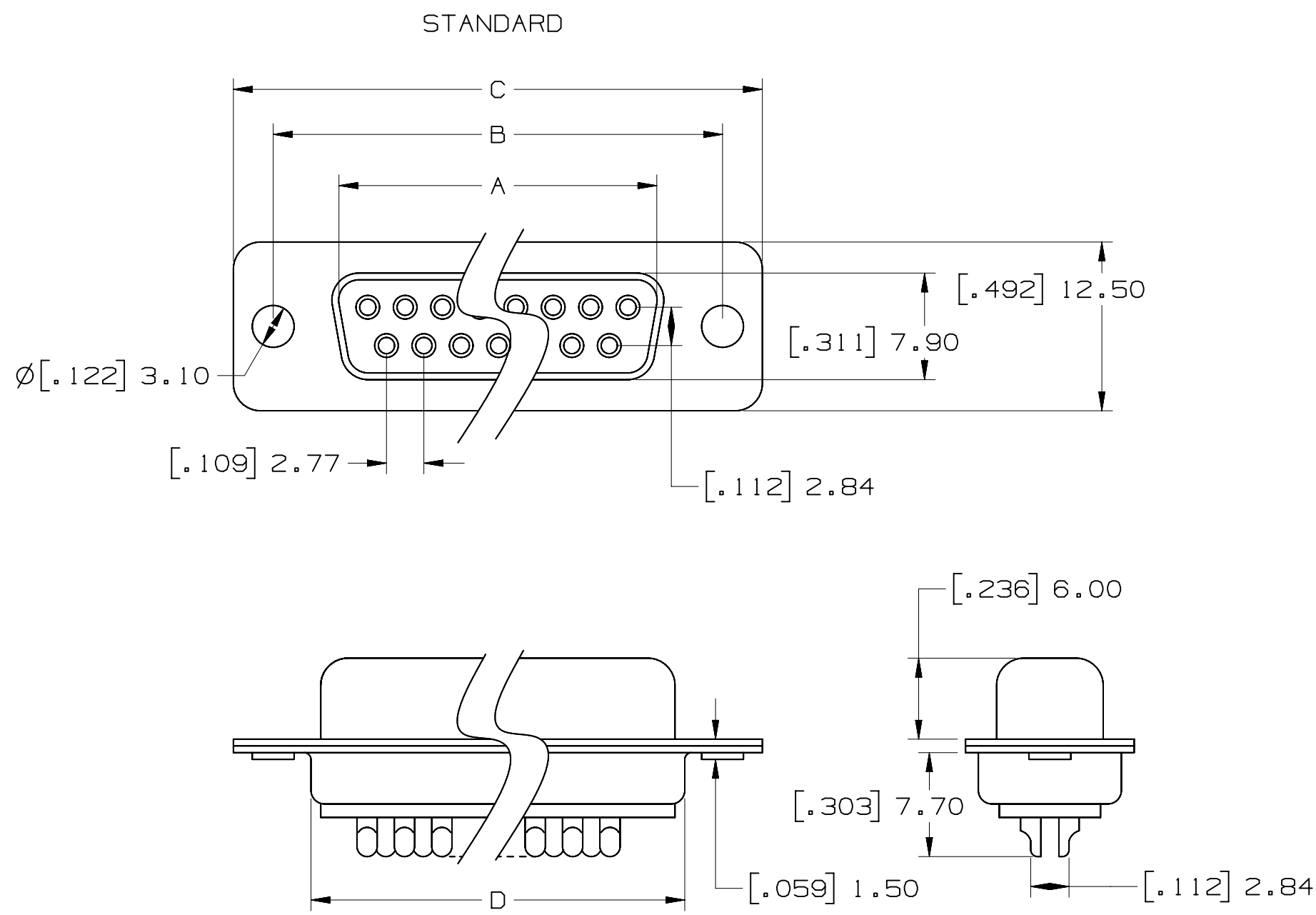


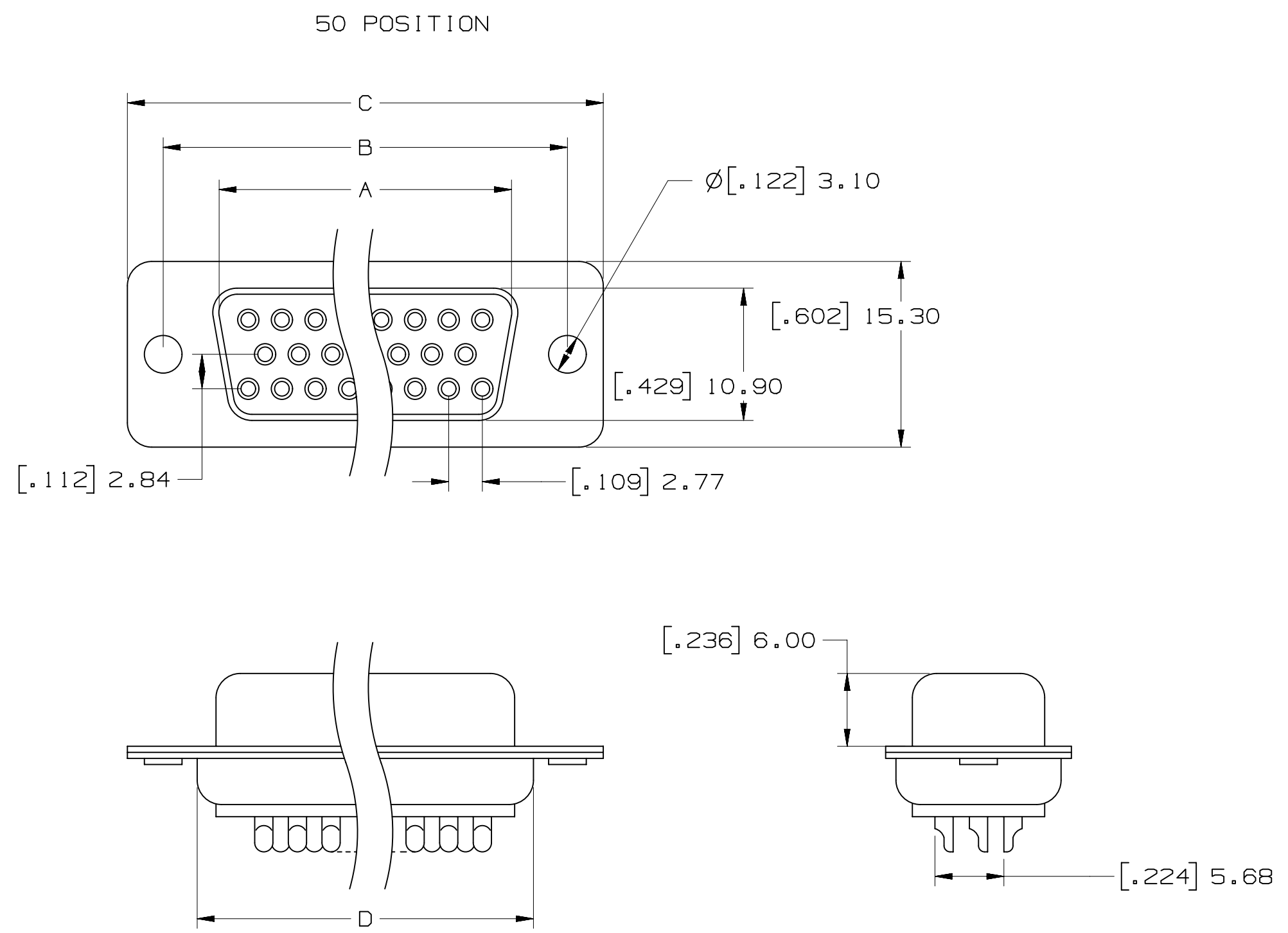
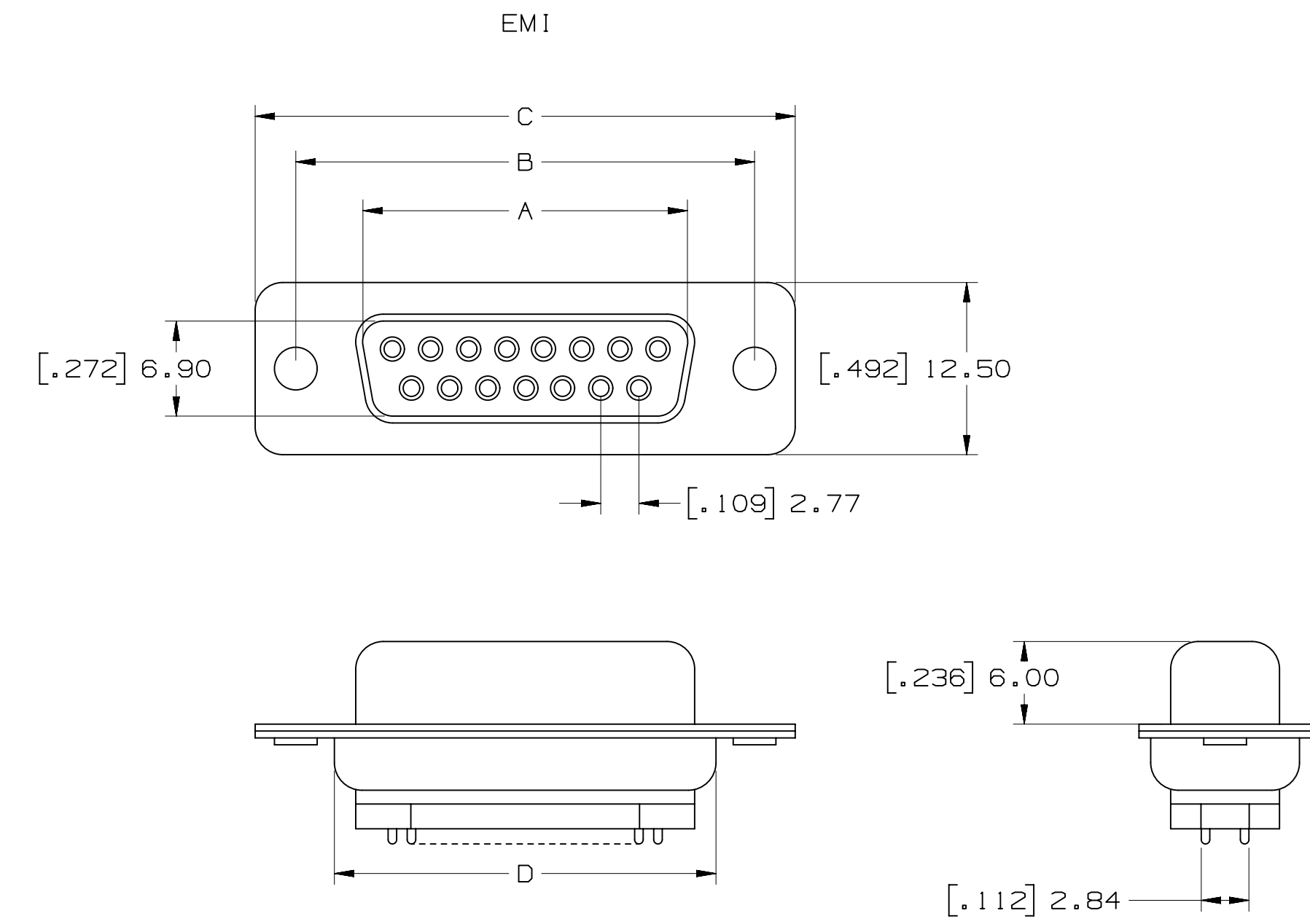
3M™ Solder Cup D Sub Socket, 8000 Series



POSITION	A	B	C	D
9	[.642] 16.30	[.984] 25.00	[1.213] 30.80	[.756] 19.20
15	[.969] 24.60	[1.311] 33.30	[1.543] 39.20	[1.091] 27.70
25	[1.508] 38.30	[2.248] 57.10	[2.091] 53.10	[1.618] 41.10
37	[2.157] 54.80	[2.500] 63.50	[2.732] 69.40	[2.256] 57.30
50*	[2.055] 52.20	[2.402] 61.00	[2.638] 67.00	[2.169] 55.10

\*50 POSITION AVAILABLE IN STANDARD ONLY

PERFORMANCE	
OPERATION VOLTAGE:	250V MAX.
CURRENT:	3A MAX.
INSULATION RESISTANCE:	3000 MOhm MIN @ 500VDC
WITHSTANDING VOLTAGE:	1000 VAC / MIN.
TEMPERATURE RATING:	-55°C to 105°C
CONTACT RESISTANCE:	15 mOhms MAX.



8RXX - X00X

NUMBER OF CONTACTS (SEE TABLE)  
 PLATING  
 1 - AU FLASH  
 2 - 30µ" AU  
 EMI  
 N - STANDARD  
 E - EMI

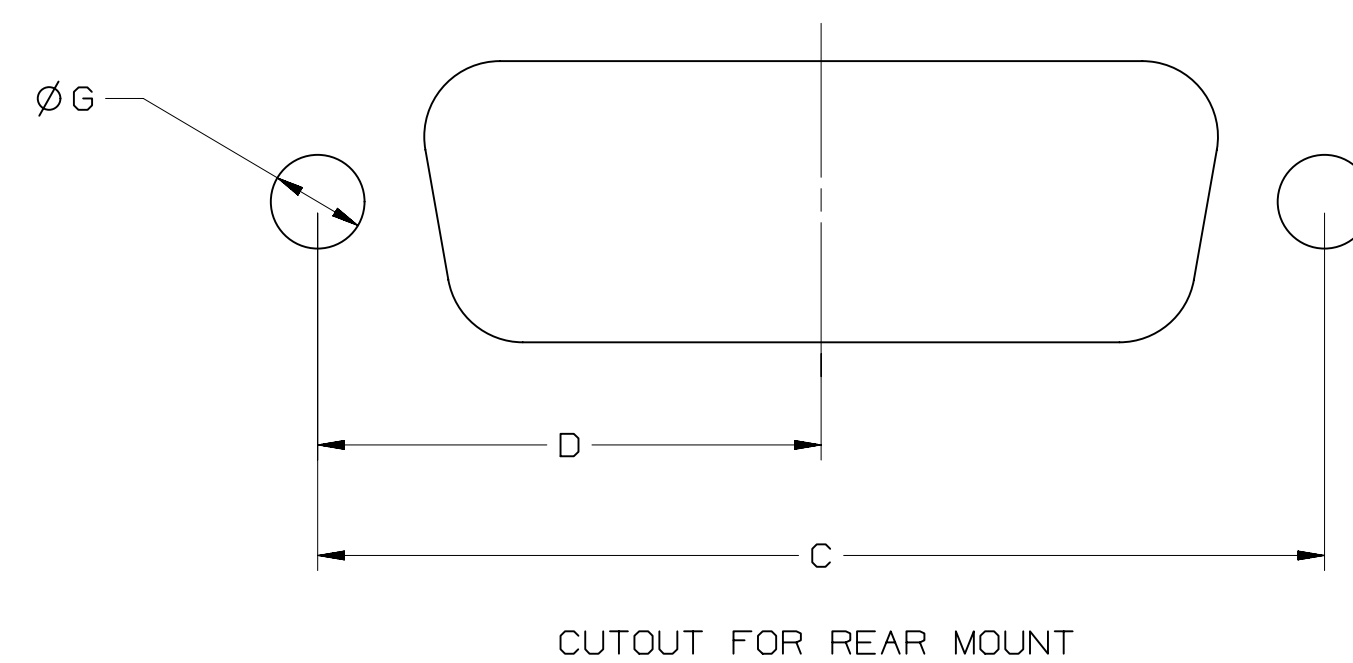
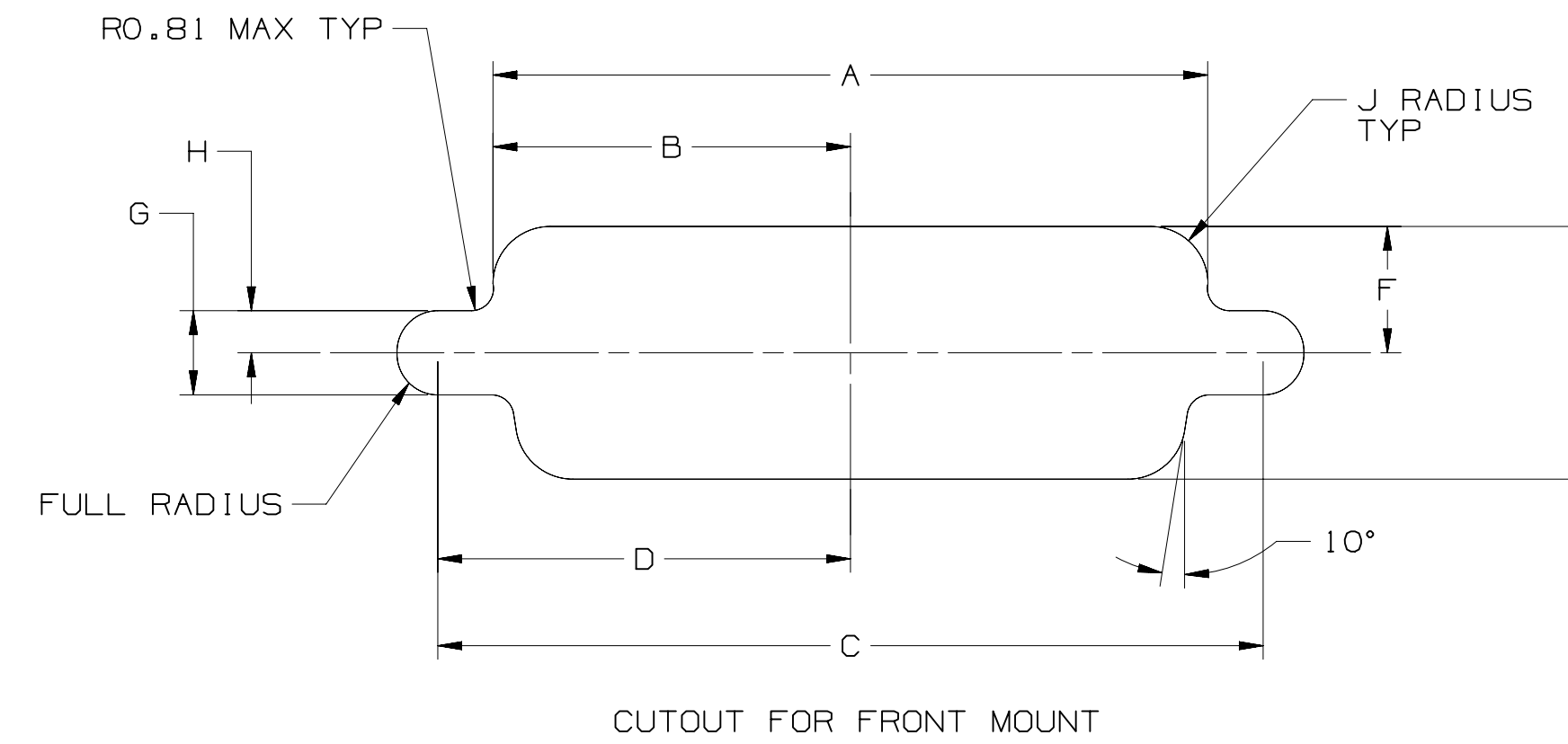
NOTES

- MATERIAL:  
THERMAL PLASTIC UL94V-0  
CONTACTS:  
COPPER ALLOY  
SHELL:  
STAINLESS STEEL
- PLATING:  
50µ" NICKEL UNDERPLATE  
1µ" AU WIPING AREA OR  
30µ" AU WIPING AREA  
100-200µ" TIN (BRIGHT TIN) SOLDER TAIL
- MATES WITH:  
BPXX-X00X
- SEE THE REGULATORY INFORMATION APPENDIX (RIA) IN "RoHS" COMPLIANCE SECTION OF WWW.3MCONNECTOR.COM FOR COMPLIANCE INFORMATION (RIA E1 & C1 APPLY)

DESIGN REFERENCE	NEXT ASSEMBLY	REV	ECO	ISSUE DATE AND DESCRIPTION	DRFT	CHKD
		SJS		MAY 18, 2011		
		SJS		MAY 18, 2011		
DIVISION		DISTRIBUTION CODE		DATE		
DO NOT SCALE DRAWING		SCALE 1/1		TOLERANCES EXCEPT AS NOTED		
THIRD ANGLE PROJECTION		INCHES		MILLIMETERS		
INTERPRET PER ASME Y14.5 - 1994		.00 ±		0 ± .1		
MAX SURFACE ROUGHNESS		.000 ±		.00 ± .05		
125		.000 ± .005		.000 ± .005		
✓		X MARKED ONLY		ANGLES ± 1°		
3M Center St. Paul, MN 55144		© 3M COPYRIGHT 2011		This document and the information it contains are 3M property and may not be reproduced or further distributed without 3M permission, or used or disclosed other than for 3M authorized purposes. All rights reserved.		
TITLE		8RXX-X00X D-SUB SOLDER CUP SOCKET				
CAGE NUMBER	SIZE	DRAWING NO.	REV.			
125	D	78-5100-2402-5	B			
MODEL	BR	DET	IS1s		YES NO SHT 1 OF 2	

78-5100-2402-5

POSITION	MOUNTING METHOD	A	B	C	D	E	F	G	H	J
9	FRONT	.874( 22.2 )	.437( 11.1 )	.984( 25.0 )	.492( 12.5 )	.513( 13.0 )	.257( 6.5 )	.120( 3.1 )	.060( 1.5 )	.083( 2.1 )
	REAR	.806( 20.5 )	.403( 10.2 )	.984( 25.0 )	.492( 12.5 )	.449( 11.4 )	.225( 5.7 )	.120( 3.1 )	.060( 1.5 )	.132( 3.4 )
15	FRONT	1.202( 30.5 )	.601( 15.3 )	1.312( 33.3 )	.656( 16.7 )	.513( 13.0 )	.257( 6.5 )	.120( 3.1 )	.060( 1.5 )	.083( 2.1 )
	REAR	1.134( 28.8 )	.567( 14.4 )	1.312( 33.3 )	.656( 16.7 )	.449( 11.4 )	.225( 5.7 )	.120( 3.1 )	.060( 1.5 )	.132( 3.4 )
25	FRONT	1.743( 44.3 )	.872( 22.2 )	1.852( 47.0 )	.926( 23.5 )	.513( 13.0 )	.257( 6.5 )	.120( 3.1 )	.060( 1.5 )	.083( 2.1 )
	REAR	1.674( 42.5 )	.837( 21.3 )	1.852( 47.0 )	.926( 23.5 )	.449( 11.4 )	.225( 5.7 )	.120( 3.1 )	.060( 1.5 )	.132( 3.4 )
37	FRONT	2.391( 60.7 )	1.196( 30.4 )	2.500( 63.5 )	1.250( 31.8 )	.513( 13.0 )	.257( 6.5 )	.120( 3.1 )	.060( 1.5 )	.083( 2.1 )
	REAR	2.326( 59.1 )	1.163( 29.5 )	2.500( 63.5 )	1.250( 31.8 )	.449( 11.4 )	.225( 5.7 )	.120( 3.1 )	.060( 1.5 )	.132( 3.4 )
50	FRONT	2.297( 58.3 )	1.149( 29.2 )	2.406( 61.1 )	1.203( 30.6 )	.623( 15.8 )	.312( 7.9 )	.120( 3.1 )	.060( 1.5 )	.083( 2.1 )
	REAR	2.218( 56.3 )	1.109( 28.2 )	2.406( 61.1 )	1.203( 30.6 )	.555( 14.1 )	.278( 7.1 )	.120( 3.1 )	.060( 1.5 )	.132( 3.4 )



DESIGN REFERENCE	NEXT ASSEMBLY	REV	ECO	ISSUE DATE AND DESCRIPTION	DRFT	CHKD
DISTRIBUTION CODES		DRFT	DATE	MFG	DATE	
		SJS	MAY 18, 2011			
		DRKD	DATE	APPL	DATE	
		SJSW	MAY 18, 2011			
DIVISION	DIVISION CODE	© 3M COPYR [GHT] 2011 This document and the information it contains are 3M property and may not be reproduced or further distributed without 3M permission, or used or disclosed other than for 3M authorized purposes. All rights reserved.				
DO NOT SCALE DRAWING	SCALE 1/1	<b>3M</b> Center St. Paul, MN 55144				
THIRD ANGLE PROJECTION	TOLERANCES EXCEPT AS NOTED	INCHES .00 ± .000 ± .0000 ±				
INTERPRET PER ASME Y14.5 - 1994	MILLIMETERS	0 ± .1 .0 ± .5 .00 ± .05 .000 ± .005				
MAX SURFACE ROUGHNESS	ANGLES ± 1°	TITLE <b>8RXX-X00X D-SUB SOLDER CUP SOCKET</b>				
125 <input type="checkbox"/> ALL SURFACES <input checked="" type="checkbox"/> MARKED ONLY		CAGE NUMBER	SIZE	DRAWING NO.	REV.	
		D	78-5100-2402-5	B		
		MODEL	BR	DET	ISTS	YES <input type="checkbox"/> NO <input checked="" type="checkbox"/> SHT 2 OF 2

78-5100-2402-5  
DRAWING NUMBER