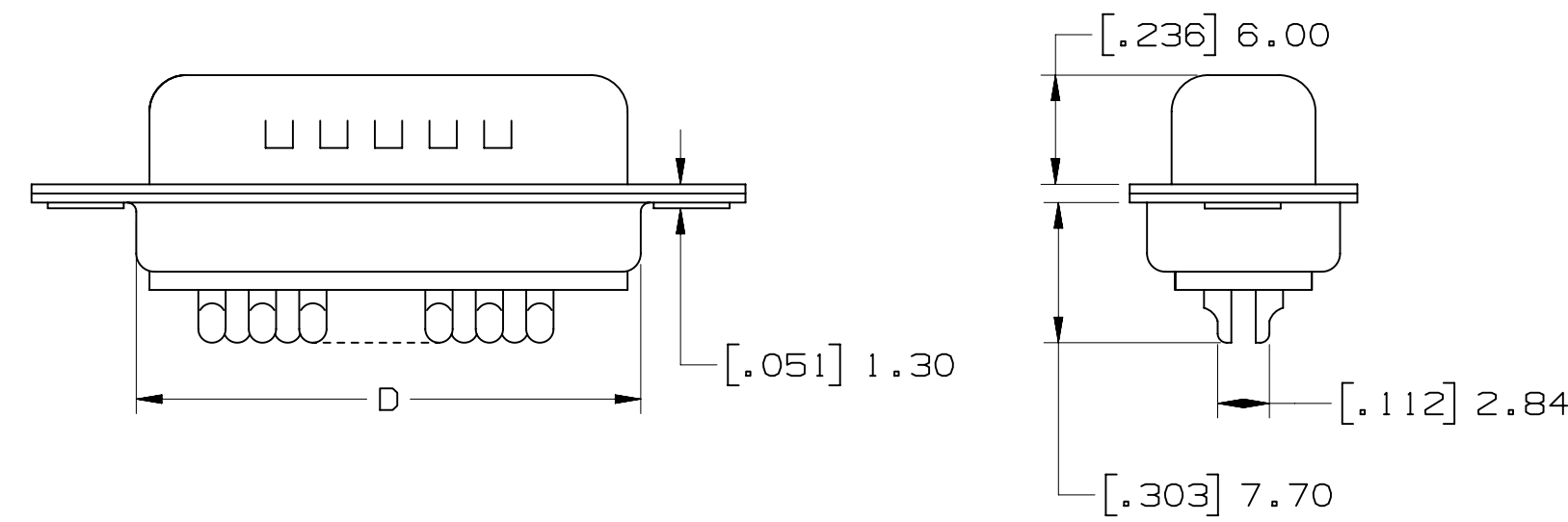
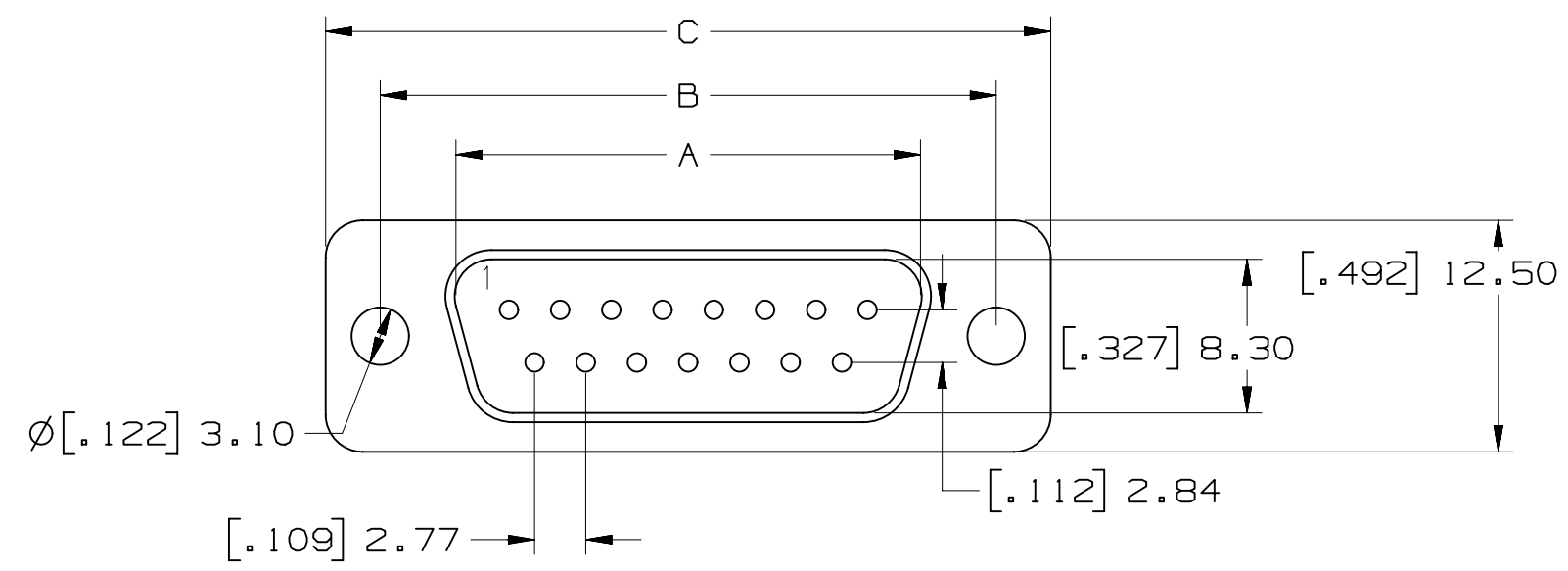


3M™ Solder Cup D Sub Plug, 8000 Series

STANDARD

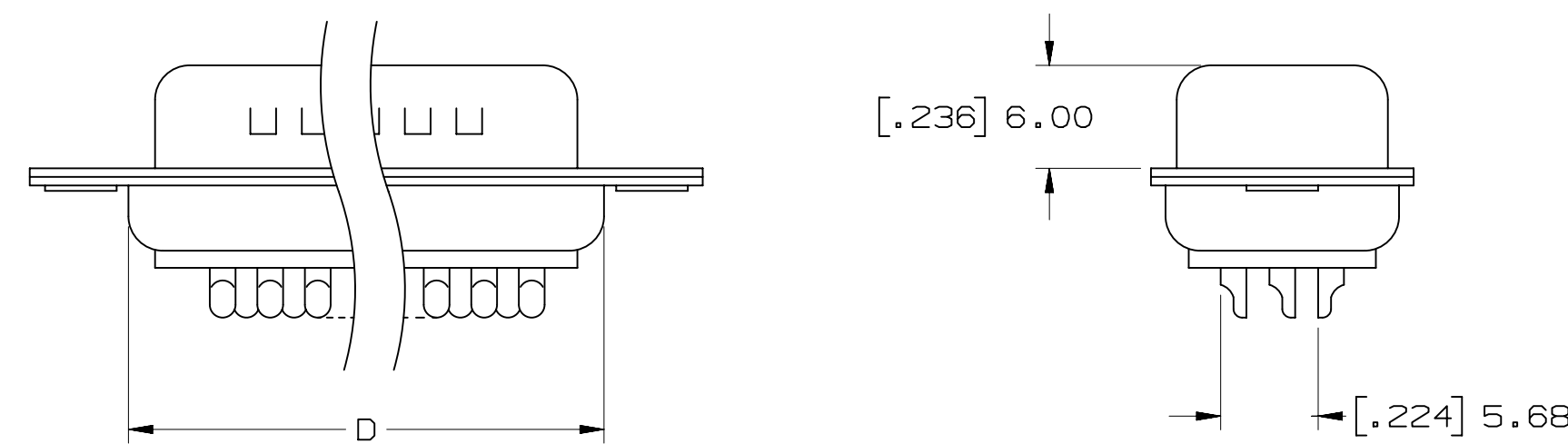
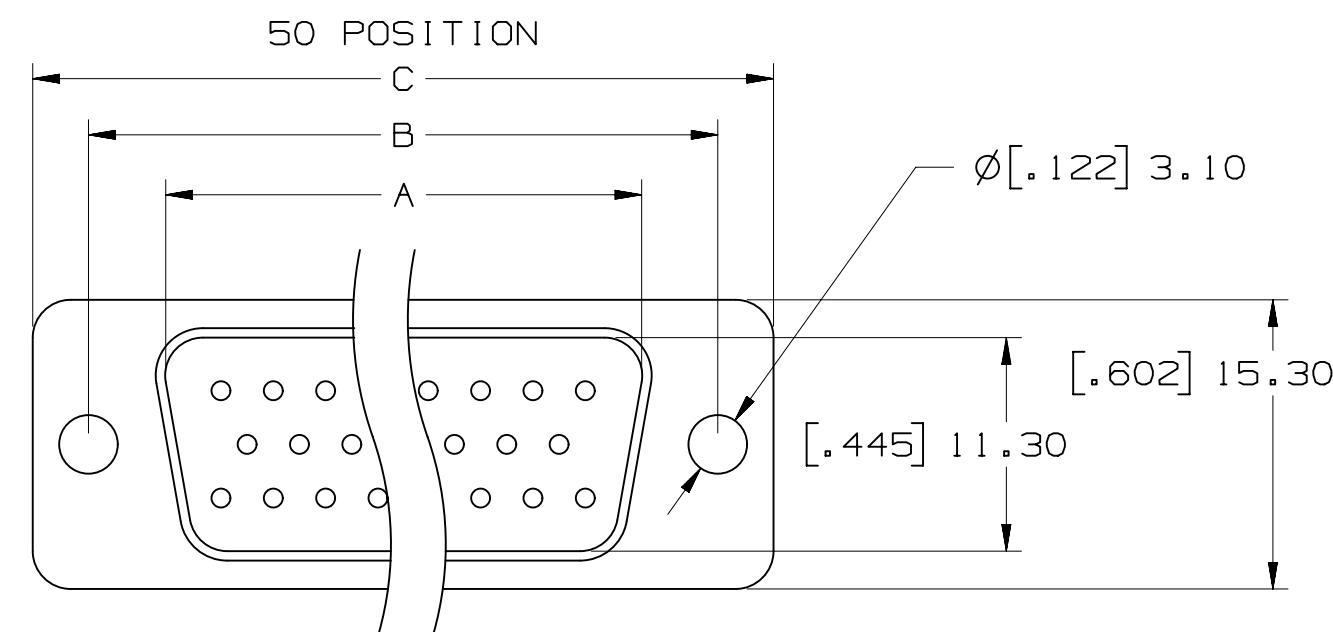
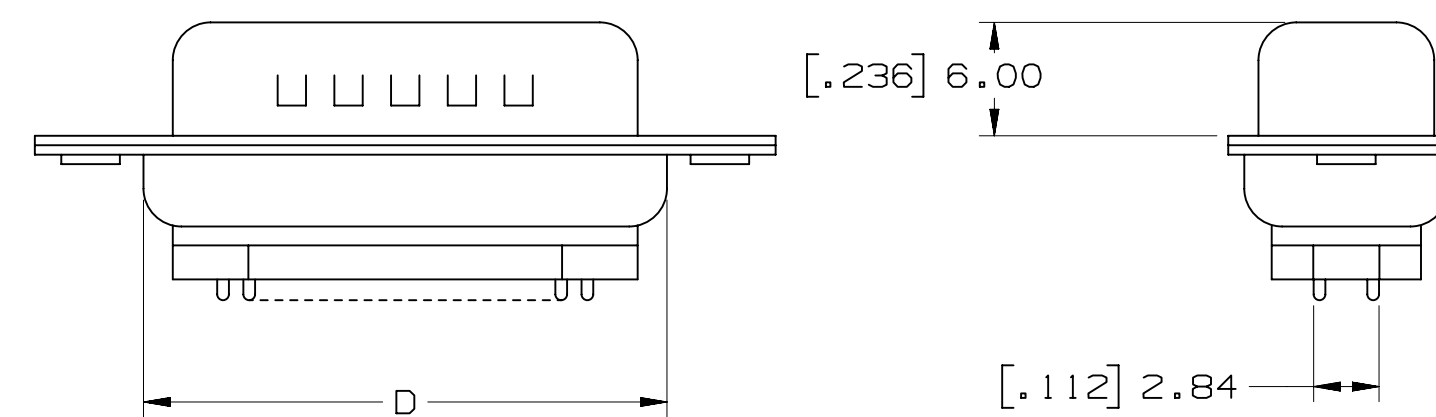
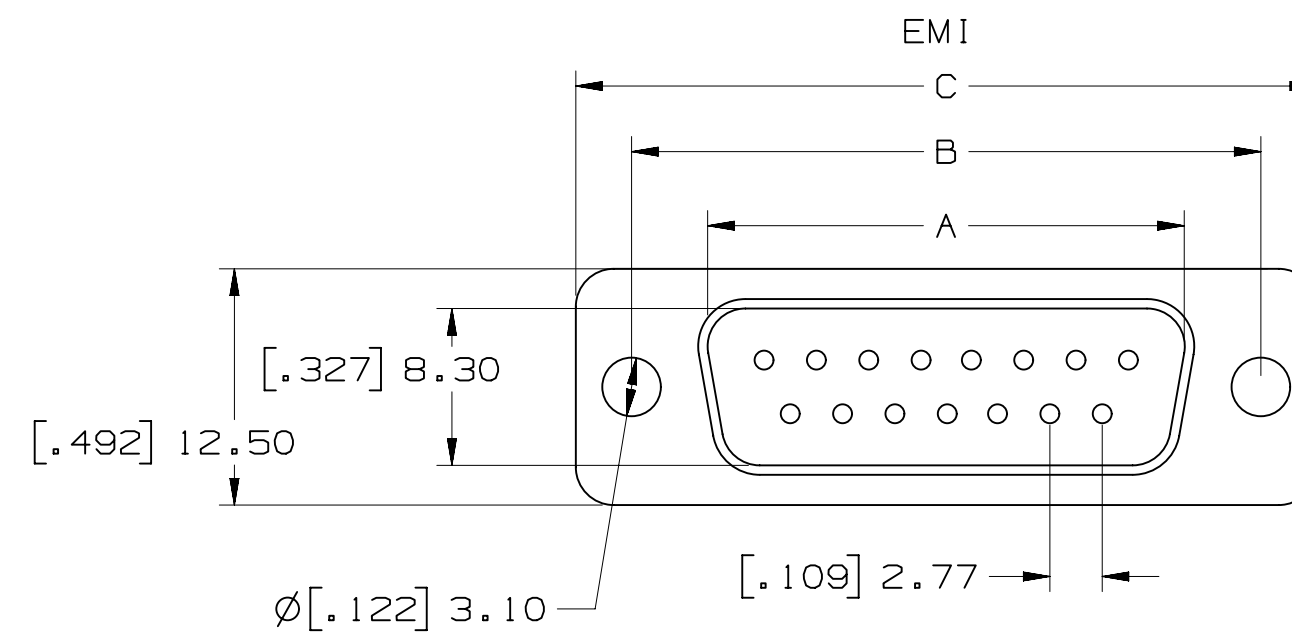


POSITION	A	B	C	D
09	[.67] 16.92	[.98] 25.0	[1.21] 30.8	[.76] 19.2
15	[.99] 25.25	[1.31] 33.3	[1.54] 39.2	[1.09] 27.7
25	[1.53] 38.96	[1.85] 47.1	[2.09] 53.1	[1.62] 41.1
37	[2.18] 55.42	[2.50] 63.5	[2.73] 69.4	[2.26] 57.3
50*	[2.08] 52.8	[2.4] 61.0	[2.64] 67.0	[2.17] 55.1

*50 POSITION AVAILABLE IN STANDARD ONLY

PERFORMANCE	
OPERATION VOLTAGE:	250VAC MAX.
CURRENT:	3A MAX.
INSULATION RESISTANCE:	3000 MOhm MIN @ 500VDC
WITHSTANDING VOLTAGE:	1000 VAC/ MIN
TEMPERATURE RATING:	-55°C to + 105°C
CONTACT RESISTANCE:	15 mOhms MAX

- NOTES
- MATERIAL:
THERMAL PLASTIC UL94V-0
CONTACTS:
COPPER ALLOY
SHELL:
STAINLESS STEEL
 - PLATING:
50µ" NICKEL UNDERPLATE
1µ" AU WIPING AREA
30µ" AU WIPING AREA
100-200µ" TIN (BRIGHT TIN) SOLDER TAIL
 - MATES WITH:
8RXX-X00X
 - SEE THE REGULATORY INFORMATION APPENDIX (RIA) IN "RoHS COMPLIANCE" SECTION OF WWW.3MCONNECTOR.COM FOR COMPLIANCE INFORMATION (RIA E1&C1 APPLY)



8PXX - X00X

PLATING
1 - AU FLASH
2 - 30µ" AU

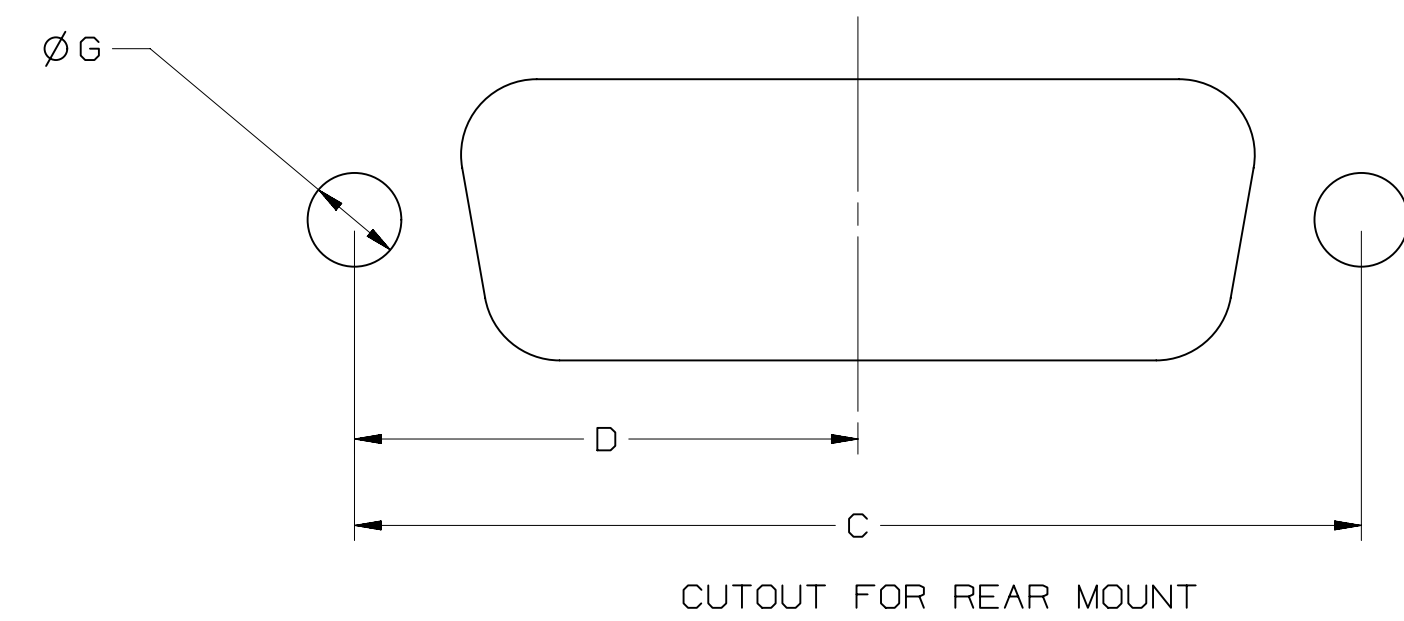
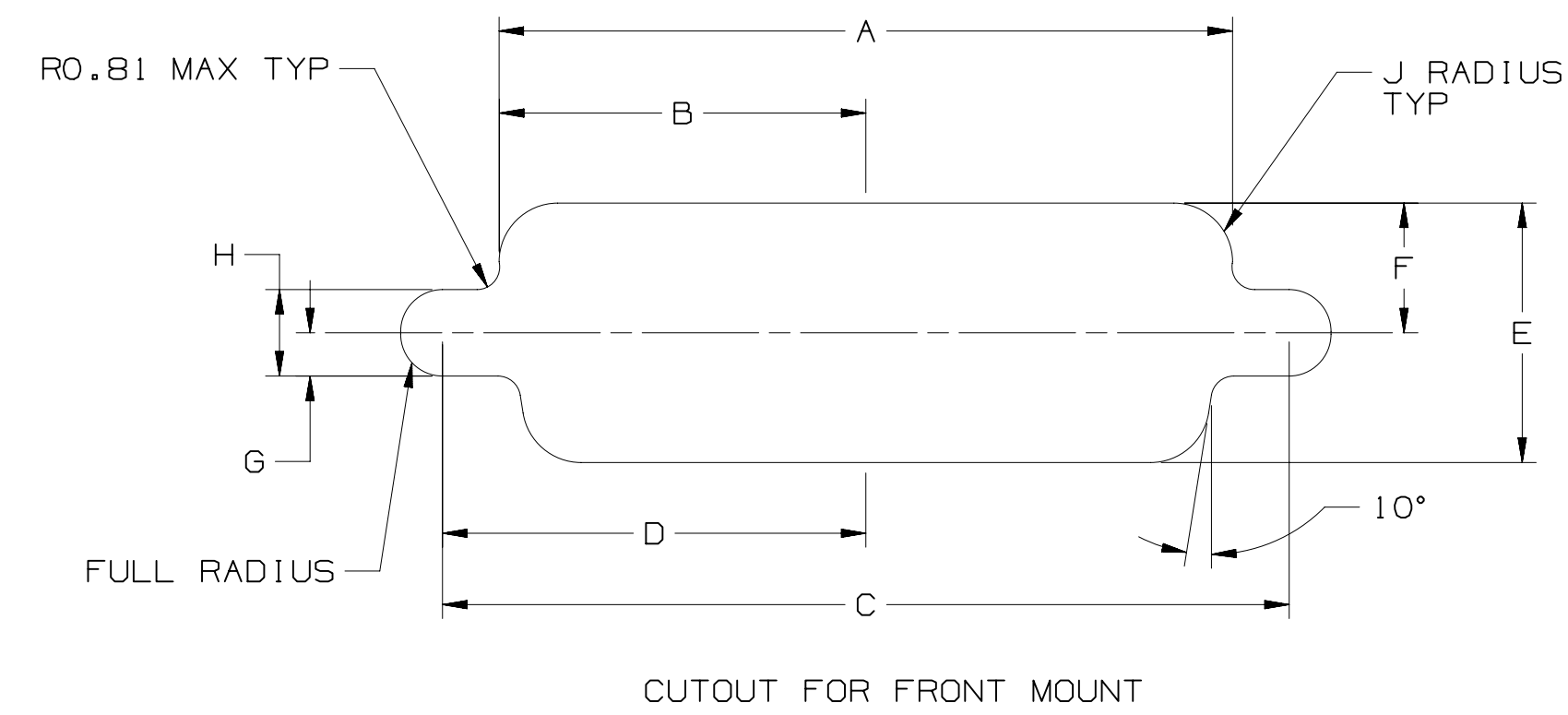
EMI
N - STANDARD
E - EMI

DESIGN REFERENCE	NEXT ASSEMBLY	REV	ECO	ISSUE DATE AND DESCRIPTION	DRFT	CHKD
		SJS		MAY 17, 2011		
DISTRIBUTION CODES		MM		MAY 17, 2011		
DIVISION	DIVISION CODE	© 3M COPYRIGHT 2011 This document and the information it contains are 3M property and may not be reproduced or further distributed without 3M permission, or used or disclosed other than for 3M authorized purposes. All rights reserved.				
DO NOT SCALE DRAWING	SCALE 1/1	TOLERANCES EXCEPT AS NOTED INCHES .00 ± .000 ± .0000 ±				
THIRD ANGLE PROJECTION		MILLIMETERS 0 ± 1 .0 ± .5 .00 ± .05 .000 ± .005				
INTERPRET PER ASME Y14.5 - 1994		MAX SURFACE ROUGHNESS 125 <input type="checkbox"/> ALL SURFACES <input checked="" type="checkbox"/> MARKED ONLY				
		ANGLS ± 1°				
TITLE 8PXX-X00X D-SUB SOLDER CUP PLUG TS-2357		CAGE NUMBER D 78-5100-2357-1		DRAWING NO. B		REV. B
MODEL BP		DET. [] YES [X] NO		SHT 1 OF 2		

78-5100-2357-1
DRAWING NUMBER

A

POSITION	MOUNTING METHOD	A	B	C	D	E	F	G	H	J
9	FRONT	.874(22.2)	.437(11.1)	.984(25.0)	.492(12.5)	.513(13.0)	.257(6.5)	.120(3.1)	.060(1.5)	.083(2.1)
	REAR	.806(20.5)	.403(10.2)	.984(25.0)	.492(12.5)	.449(11.4)	.225(5.7)	.120(3.1)	.060(1.5)	.132(3.4)
15	FRONT	1.202(30.5)	.601(15.3)	1.312(33.3)	.656(16.7)	.513(13.0)	.257(6.5)	.120(3.1)	.060(1.5)	.083(2.1)
	REAR	1.134(28.8)	.567(14.4)	1.312(33.3)	.656(16.7)	.449(11.4)	.225(5.7)	.120(3.1)	.060(1.5)	.132(3.4)
25	FRONT	1.743(44.3)	.872(22.2)	1.852(47.0)	.926(23.5)	.513(13.0)	.257(6.5)	.120(3.1)	.060(1.5)	.083(2.1)
	REAR	1.674(42.5)	.837(21.3)	1.852(47.0)	.926(23.5)	.449(11.4)	.225(5.7)	.120(3.1)	.060(1.5)	.132(3.4)
37	FRONT	2.391(60.7)	1.196(30.4)	2.500(63.5)	1.250(31.8)	.513(13.0)	.257(6.5)	.120(3.1)	.060(1.5)	.083(2.1)
	REAR	2.326(59.1)	1.163(29.5)	2.500(63.5)	1.250(31.8)	.449(11.4)	.225(5.7)	.120(3.1)	.060(1.5)	.132(3.4)
50	FRONT	2.297(58.3)	1.149(29.2)	2.406(61.1)	1.203(30.6)	.623(15.8)	.312(7.9)	.120(3.1)	.060(1.5)	.083(2.1)
	REAR	2.218(56.3)	1.109(28.2)	2.406(61.1)	1.203(30.6)	.555(14.1)	.278(7.1)	.120(3.1)	.060(1.5)	.132(3.4)



DESIGN REFERENCE		NEXT ASSEMBLY		REV	ECO	ISSUE DATE AND DESCRIPTION		DRFT	CHKD
DISTRIBUTION CODES		DISTRIBUTION CODES		DRP	SJS	DATE	MAY 17, 2011	MFG	DATE
DIVISION		DIVISION CODE		CHKD	MM	DATE	MAY 17, 2011	APPL	DATE
DO NOT SCALE DRAWING		SCALE 1/1		TOLERANCES EXCEPT AS NOTED		 <small>© 3M COPYR[IGHT] 2011 3M Center St. Paul, MN 55144</small>			
THIRD ANGLE PROJECTION		INCHES		MILLIMETERS		TITLE 8PXX-X00X D-SUB SOLDER CUP PLUG TS-2357			
INTERPRET PER ASME Y14.5 - 1994		MILLIMETERS		CAGE NUMBER		DRAWING NO.		REV.	
MAX SURFACE ROUGHNESS		INCHES		D		78-5100-2357-1		B	
125		MILLIMETERS		MODEL		BP		SHT 2 OF 2	
<input type="checkbox"/> ALL SURFACES <input checked="" type="checkbox"/> MARKED ONLY		ANGLES ±1°		DET		SJS		YES <input type="checkbox"/> NO <input checked="" type="checkbox"/>	

78-5100-2357-1
DRAWING NUMBER