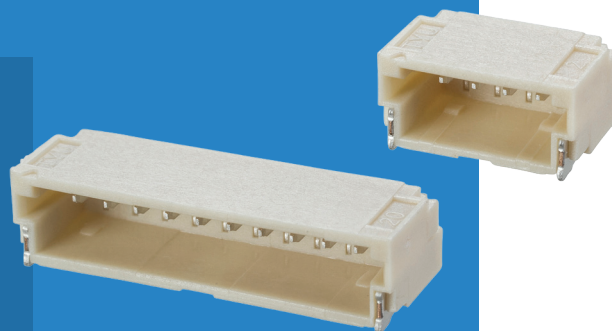


M40 Cable-to-Board Connectors

Male Horizontal Surface Mount

- Shrouded male connectors.
- Tape and Reel option does not require Pick and Place cap.

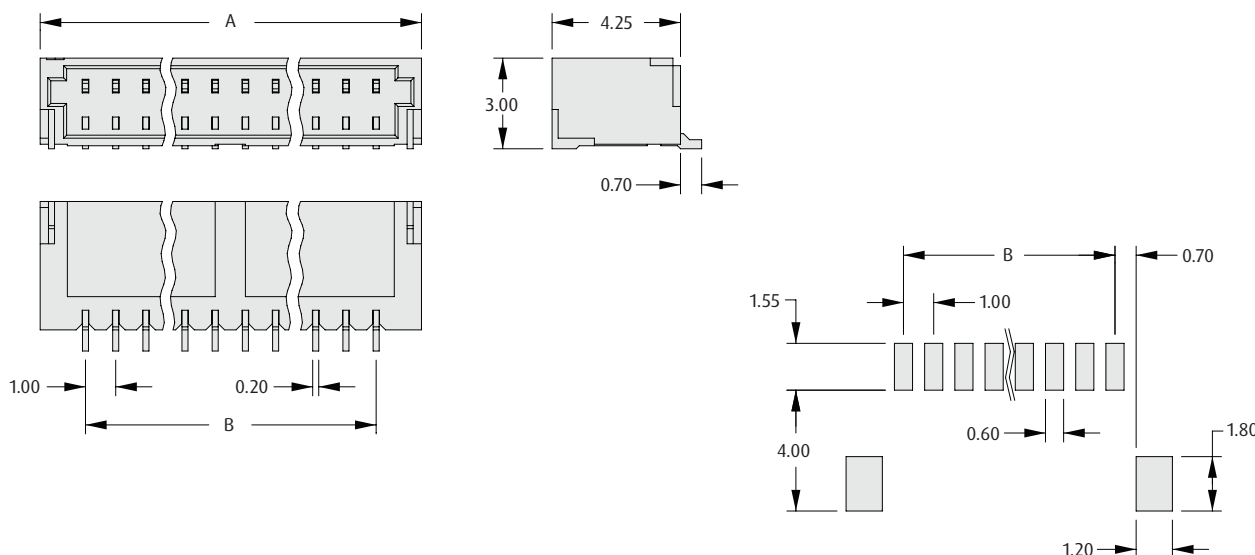


1mm (.039") PITCH

SINGLE ROW

CALCULATION

A	$B + 3$
B	No. of contacts per row - 1



Recommended PC Board Pattern

HOW TO ORDER

M40 - 401 XX 46 X

SERIES CODE

NO. OF CONTACTS PER ROW

02 to 20

PACKAGING

Blank	Loose
R	Tape & Reeled

FINISH

46 Tin

All dimensions in mm.