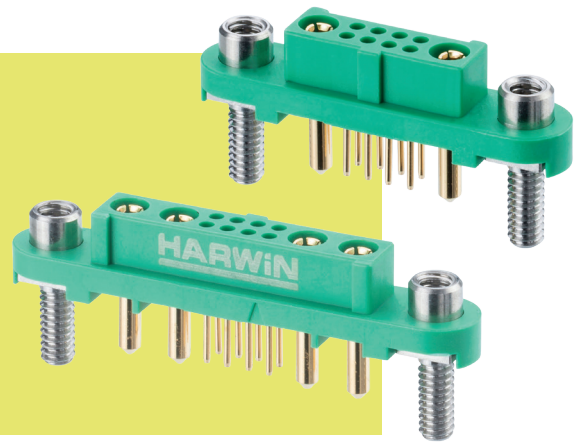


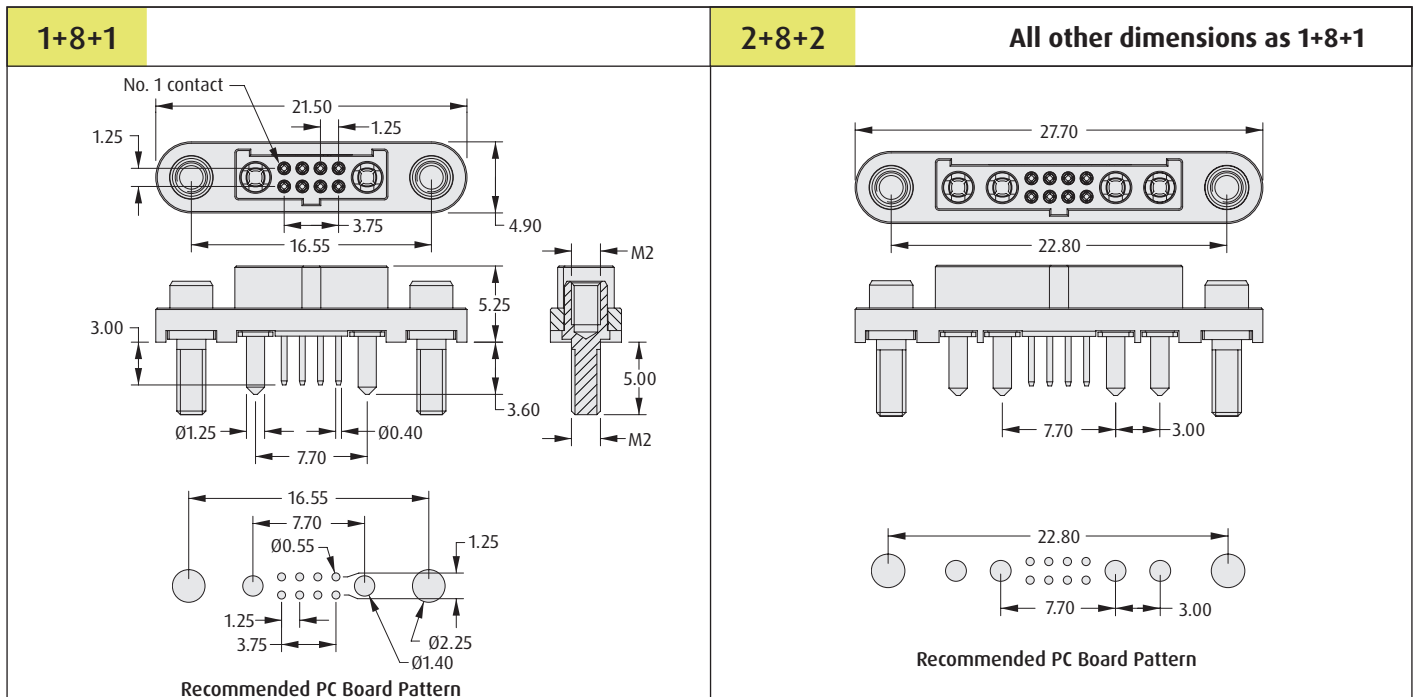
Gecko-MT Connectors

Female Vertical Throughboard – Reverse Fix

- Reverse fix screw-lok suitable for board-to-cable applications, where the female connector is located on the PCB.
- 2A current rating for signal contacts, 10A for power contacts.
- 4-finger Beryllium Copper contact design on both signal and power contacts.
- Order nuts for board-mount separately – see bottom of page for choice of nut type.



GECKO-MT



HOW TO ORDER

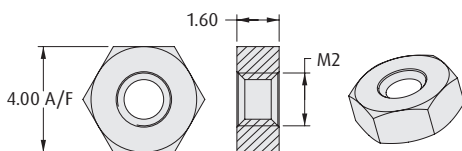
G125 - FV1 08 05 F3 - XABXAB P

SERIES CODE		PACKAGING
TOTAL NO. OF SIGNAL CONTACTS		P Tape & Reel strips
SCREW-LOK		POWER CONTACTS
F3 Reverse Fix		1AB1AB 1+8+1 Configuration
		2AB2AB 2+8+2 Configuration

REQUIRED HARDWARE

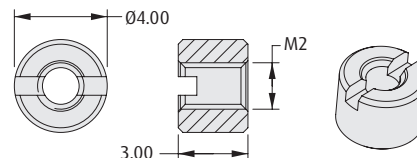
Order separately from connector

Hexagonal Board Mount Nut



ORDER CODE
G125-4500000B

Slotted Board Mount Nut



ORDER CODE
G125-4510000B

All dimensions in mm.

Patent Published