

Customer Information Sheet

DRAWING No.: S2711-XXR

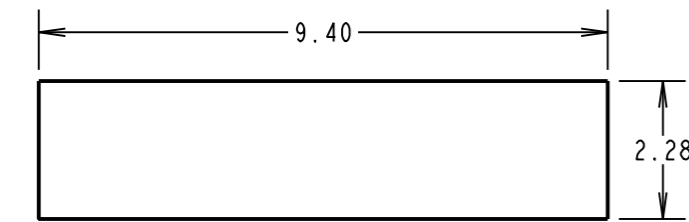
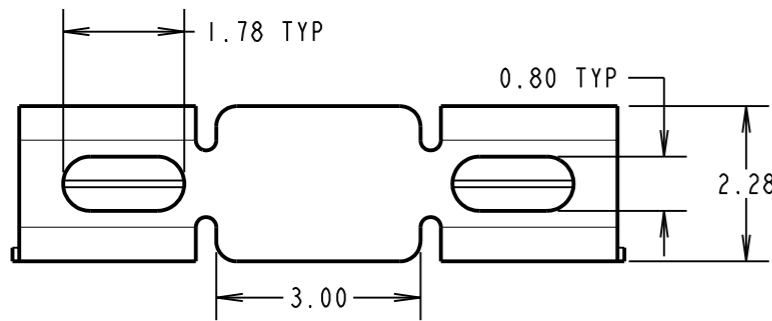
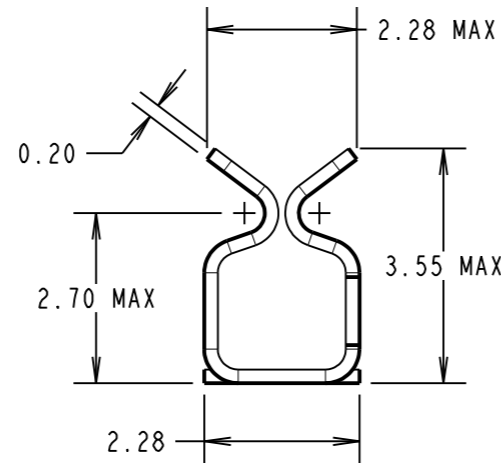
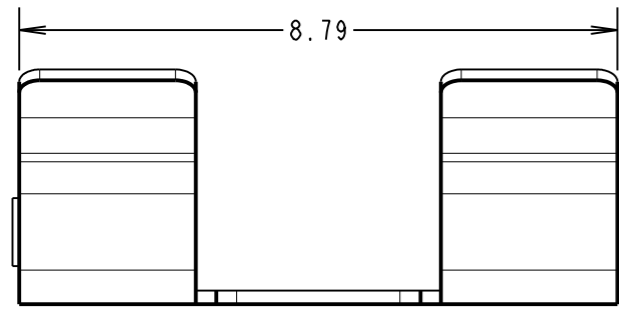
IF IN DOUBT - ASK

©

NOT TO SCALE

THIRD ANGLE PROJECTION

ALL DIMENSIONS IN mm



RECOMMENDED PAD LAYOUT

COMPONENT SPECIFICATION:

MATERIAL = CUPRO NICKEL

FINISH:

06 = 2.5-3.5 μ TIN/LEAD,
OVER 2.0-4.0 μ NICKEL

46 = 2.4-3.6 μ 100% TIN,
OVER 2.4-3.6 μ NICKEL

ENVIRONMENTAL:

OPERATING TEMPERATURE = -40°C TO +125°C

PERFORMANCE SPECIFICATIONS:

INSERTION FORCE (AFTER CONDITIONING) = 4N MAX

WITHDRAWAL FORCE = 0.5N MIN

DURABILITY = 20 INSERTIONS MINIMUM

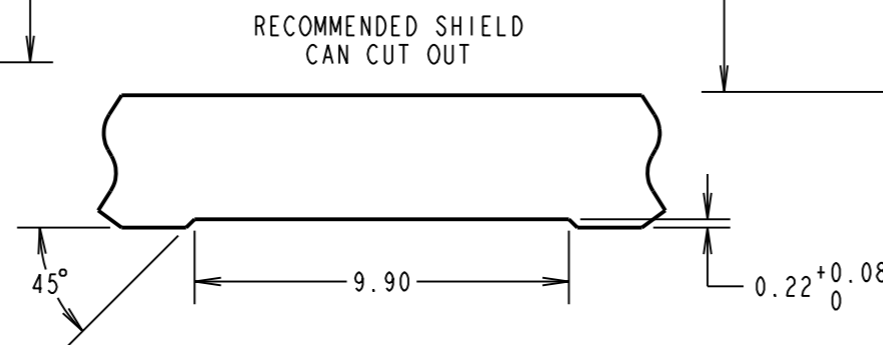
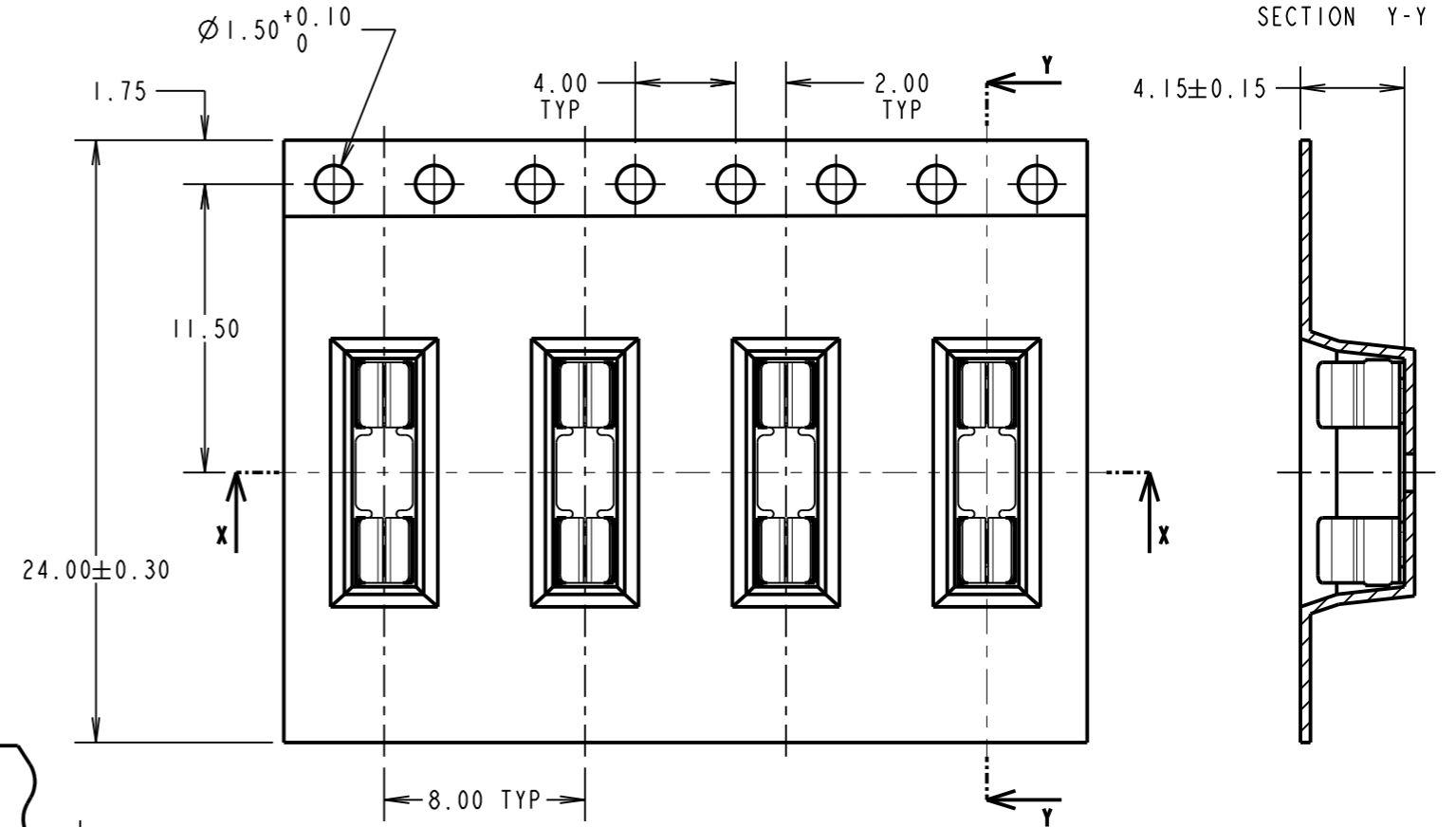
CONTACT RESISTANCE = 20m Ω MAX

SHIELD THICKNESS = 0.17mm - 0.30mm

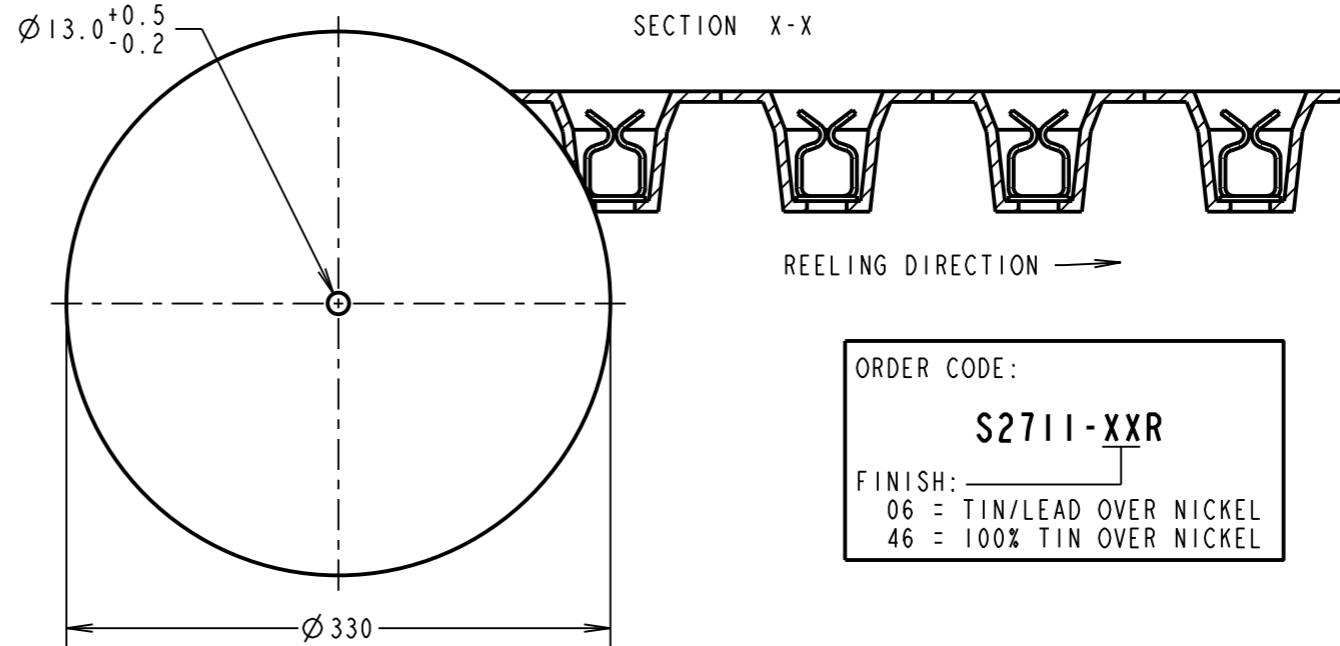
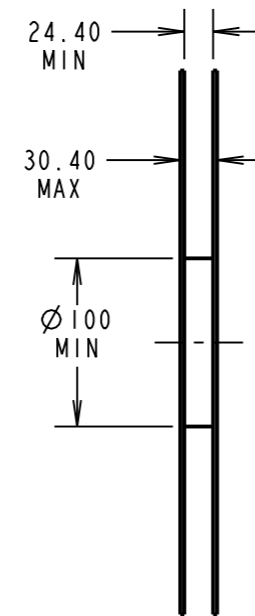
NOTES:

1. QUANTITY PER REEL = 1,900.

2. THIS PRODUCT IS TAPED AND REELED IN ACCORDANCE WITH EIA-481 (ELECTRONIC INDUSTRIES ASSOCIATION).



RECOMMENDED SHIELD
CAN CUT OUT



SECTION X-X

REELING DIRECTION →

ORDER CODE:
S2711-XXR
FINISH:
06 = TIN/LEAD OVER NICKEL
46 = 100% TIN OVER NICKEL

MSP	11	03.08.17	20719
NAME	ISS.	DATE	C/NOTE
APPROVED: M.PERREN			
CHECKED: S.BENNETT			
DRAWN: J.EVANS			
CUSTOMER REF.:			
ASSEMBLY DRG.:			

HARWIN

www.harwin.com
technical@harwin.com

THIS DRAWING AND ANY INFORMATION OR DESCRIPTIVE MATTER SET OUT HEREON ARE CONFIDENTIAL AND COPYRIGHT PROPERTY OF THE HARWIN GROUP AND MUST NOT BE DISCLOSED, LOANED, COPIED OR USED FOR MANUFACTURING, TENDERING OR FOR ANY OTHER PURPOSE WITHOUT THEIR WRITTEN PERMISSION.

TOLERANCES

X. = ± 1 mm
X.X = ± 0.25 mm
X.XX = ± 0.10 mm
X.XXX = ± 0.01 mm
ANGLES = $\pm 5^\circ$
UNLESS STATED

MATERIAL:

SEE ABOVE

FINISH:

SEE ABOVE

S/AREA:

mm²

TITLE:

SMT RFI SHIELD CLIP
IN TAPE AND REEL
(CUPRO NICKEL)

DRAWING NUMBER:

S2711-XXR

SHT
2 OF 2