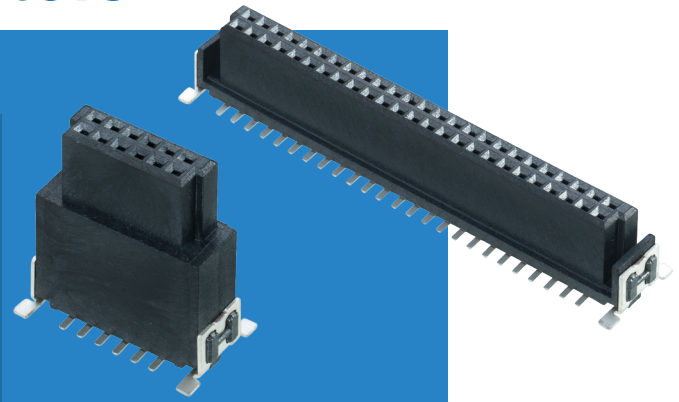


Archer Kontrol Connectors

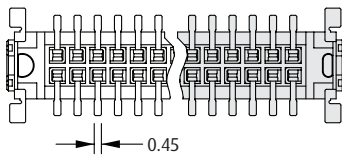
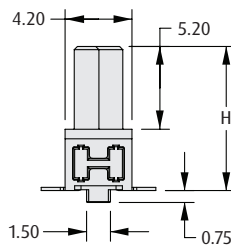
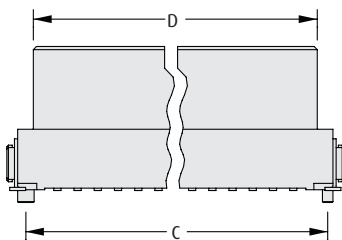
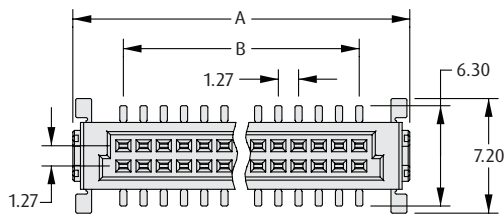
Female Vertical Surface Mount

- ❖ Suitable for parallel board-to-board (mezzanine stacking) or motherboard-to-daughterboard configurations.
- ❖ Choice of three height options.
- ❖ Polarised and shrouded housing design.
- ❖ Location pegs and tape & reel packaging for automated assembly processes.



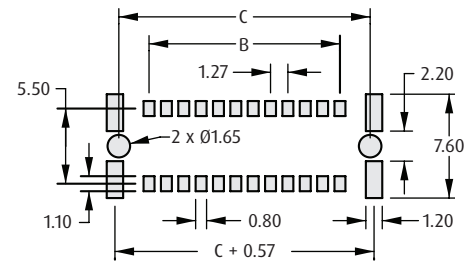
1.27mm (.050") PITCH

VERTICAL



CALCULATION

A	$B + 6.35$
B	$0.635 \times (\text{Total No. of contacts} - 2)$
C	$B + 4.42$
D	$B + 3.02$



Recommended PC Board Pattern

HOW TO ORDER

M55 - 60 X XX 42 R

SERIES CODE

CONNECTOR HEIGHT

0	H = 6.25mm
1	H = 9.05mm
2	H = 13.65mm

PACKAGING

R Tape & Reeled

FINISH

42 Gold + Tin

TOTAL NO. OF CONTACTS

12, 16, 20, 26, 32, 40, 50, 68, 80

All dimensions in mm.