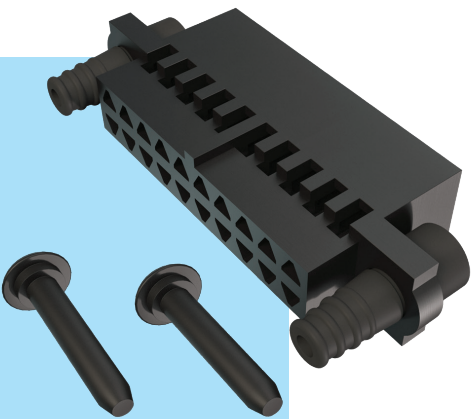


# M225 Connectors

M225 SERIES

## Female Crimp Housings

- Female crimp housing kits - contacts are ordered separately (shown on following page).
- Housings are supplied fitted with the rubber locking collars, and supplied with loose fixing pins. Collars and pins only needed to be ordered separately if spares are required.



HOUSING	CALCULATION	SPARE RUBBER LOCKING COLLAR
<div> <p>Technical drawing of the housing showing dimensions A, B, C, and contact details. Dimensions include: B (length of contact area), 2.00 (pitch), No. 1 contact, C (length of housing), 11.11 max (height), 9.70 (height), 2.50 (height), 5.60 max (height), 04.00 (width), and A (length of housing).</p> </div> <div> <ul style="list-style-type: none"> <li>Housing Kit includes 2 x Rubber Locking Collars (fitted) and 2 x Fixing Pins (loose).</li> </ul> </div>	<div> <div>A</div> <div>B + 12</div> </div>	<div> <div>ORDER CODE</div> <div>M225-0500098</div> </div>
	<div> <div>B</div> <div>Total no. of contacts - 2</div> </div>	<div> <div>SPARE FIXING PIN</div> </div>
	<div> <div>C</div> <div>B + 7</div> </div>	<div> <div>ORDER CODE</div> <div>M225-0600098</div> </div>
HOW TO ORDER		
<div> <div> <div>SERIES CODE</div> <div>M225 - 455 XX 98</div> </div> <div> <div>NO. OF CONTACTS</div> <div>10, 20, 26, 34, 50</div> </div> </div>		

All dimensions in mm.