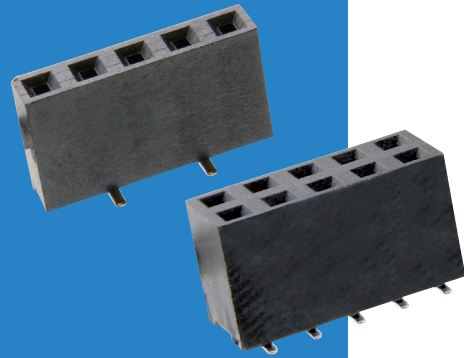


M20 Connectors

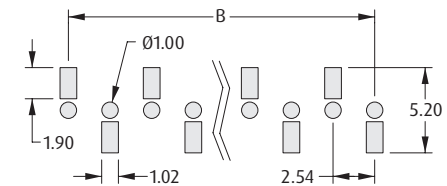
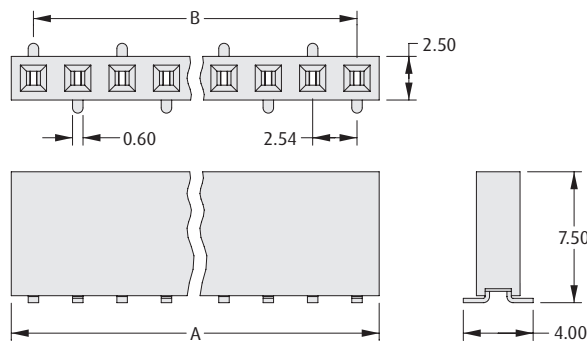
2.54mm (.100") PITCH

Female Vertical Surface Mount, Dual Entry

- ❏ Dual Entry sockets - can be used as either a top entry or bottom entry configuration.
- ❏ Twin beam contact for cost-effective reliability.
- ❏ Contact technical@harwin.com for Tape and Reel options.
- ❏ Suitable for use with mating M20 male pin headers, with 0.64mm square pins.



SINGLE ROW

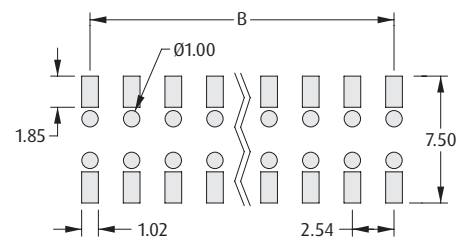
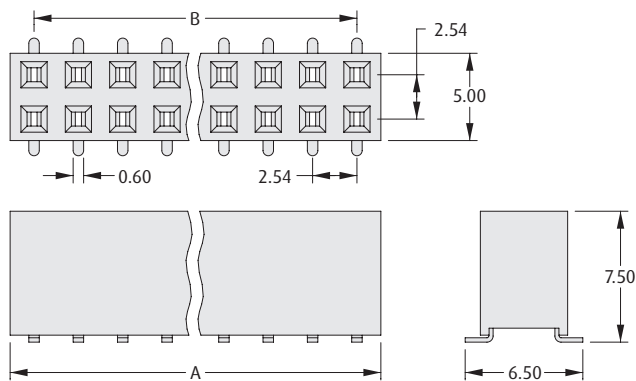


Recommended PC Board Pattern

CALCULATION

A	$B + 2.74$
B	$2.54 \times (\text{No. of contacts per row} - 1)$

DOUBLE ROW



Recommended PC Board Pattern

HOW TO ORDER

M20 - 78 X XX XX

SERIES CODE

TYPE

6	Single Row
7	Double Row

FINISH

42	Gold + Tin
46	Tin

NO. OF CONTACTS PER ROW

02 to 20

All dimensions in mm.