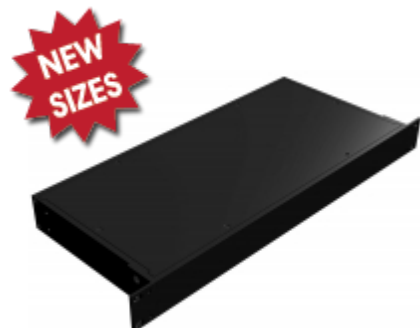




Quality Products. Service Excellence.

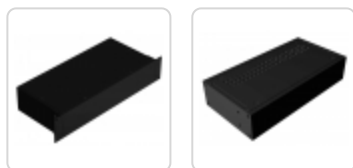
Rack-Mounted Instrument Enclosure *RM Series*

Extruded Aluminum, 19" Rack-Mount or Desktop Use



Features

- Strong construction yet light weight using all aluminum components
- Suitable for desk top or rack mountable applications.
- Knockdown design ships un-assembled for easy handling and shipping protection.
- Strong construction using:
 - extruded aluminum side panels 0.125" (3.2 mm) thick
 - extruded aluminum front & rear panels 0.125" (3.2mm) thick
 - flat aluminum top and bottom panels 0.064" (1.6 mm) thick
- Can be used with or without rack mounting brackets (one pair included)
- Front & rear panel are interchangeable.
- Enclosure is finished in rugged, textured, black powder coat.
- Includes top, bottom, sides, self adhesive rubber feet, rack mount brackets and all assembly hardware
- Pull handles & adjustable rear bracket rack mount kit (for deeper models) are not included with unit (see tables & accessories below).
- RoHS Compliant.
- Manufactured in North America.



Looking for a Rack Mount Storage Drawer? Check out the **RDRW Series**.

Accessories

- Chassis Tilt Bail
- Mounting Hardware

Part No. Solid	Part No. Vented	Overall Dimensions				Includes 19" Rack Mounting Flanges	Accepts Pull Handle Part No.	Adj. Rear Bracket Rack Mount Part No. (Sold in Pairs)		
		Top/Bottom	Top/Bottom	Height	Width				Depth	Rack Units
RM1U0804SBK	RM1U0804VBK			1.75	8.30	4.25	1U	No	1427B2BK	
RM1U0808SBK	RM1U0808VBK			1.75	8.30	8.00	1U	No	1427B2BK	
RM1U1908SBK	RM1U1908VBK			1.75	16.60	8.00	1U	Yes	1427B2BK	
RM1U1913SBK	RM1U1913VBK			1.75	16.60	13.00	1U	Yes	1427B2BK	
RM1U1918SBK	RM1U1918VBK			1.75	16.60	18.00	1U	Yes	1427B2BK	RM1U18BRKT
RM1U1922SBK	RM1U1922VBK			1.75	16.60	22.00	1U	Yes	1427B2BK	RM1U18BRKT
RM1U1928SBK	RM1U1928VBK			1.75	16.60	28.00	1U	Yes	1427B2BK	RM1U18BRKT
RM2U0804SBK	RM2U0804VBK			3.50	8.30	4.25	2U	No	1427E1BK	
RM2U0808SBK	RM2U0808VBK			3.50	8.30	8.00	2U	No	1427E1BK	
RM2U1908SBK	RM2U1908VBK			3.50	16.60	8.00	2U	Yes	1427E1BK	
RM2U1913SBK	RM2U1913VBK			3.50	16.60	13.00	2U	Yes	1427E1BK	
RM2U1918SBK	RM2U1918VBK			3.50	16.60	18.00	2U	Yes	1427E1BK	RM2U18BRKT

Part No. Solid Top/Bottom	Part No. Vented Top/Bottom	Overall Dimensions				Rack Units	Includes 19" Rack Mounting Flanges	Accepts Pull Handle Part No.	Adj. Rear Bracket Rack Mount Part No. (Sold in Pairs)
		Height	Width	Depth					
RM2U1922SBK	RM2U1922VBK	3.50	16.60	22.00	2U	Yes	1427E1BK	RM2U18BRKT	
RM2U1928SBK	RM2U1928VBK	3.50	16.60	28.00	2U	Yes	1427E1BK	RM2U18BRKT	
RM3U0804SBK	RM3U0804VBK	5.25	8.30	4.25	3U	No	1427P1BK		
RM3U0808SBK	RM3U0808VBK	5.25	8.30	8.00	3U	No	1427P1BK		
RM3U1908SBK	RM3U1908VBK	5.25	16.60	8.00	3U	Yes	1427P1BK		
RM3U1913SBK	RM3U1913VBK	5.25	16.60	13.00	3U	Yes	1427P1BK		
RM3U1918SBK	RM3U1918VBK	5.25	16.60	18.00	3U	Yes	1427P1BK	RM3U18BRKT	
RM3U1922SBK	RM3U1922VBK	5.25	16.60	22.00	3U	Yes	1427P1BK	RM3U18BRKT	
RM3U1928SBK	RM3U1928VBK	5.25	16.60	28.00	3U	Yes	1427P1BK	RM3U18BRKT	
RM4U1908SBK	RM4U1908VBK	7.00	16.60	8.00	4U	Yes	1427P1BK		
RM4U1913SBK	RM4U1913VBK	7.00	16.60	13.00	4U	Yes	1427P1BK		
RM4U1918SBK	RM4U1918VBK	7.00	16.60	18.00	4U	Yes	1427P1BK	RM3U18BRKT	
RM4U1922SBK	RM4U1922VBK	7.00	16.60	22.00	4U	Yes	1427P1BK	RM3U18BRKT	
RM4U1928SBK	RM4U1928VBK	7.00	16.60	28.00	4U	Yes	1427P1BK	RM3U18BRKT	

Replacement Panel for Front or Rear Panel of Chassis (Sold Singly)

Part No.	Height	Width	Rack Units
RM1U08BKFP	1.75	8.30	1U
RM2U08BKFP	3.50	8.30	2U
RM3U08BKFP	5.25	8.30	3U
RM1U19BKFP	1.75	16.60	1U
RM2U19BKFP	3.50	16.60	2U
RM3U19BKFP	5.25	16.60	3U
RM4U19BKFP	7.00	16.60	4U

Replacement Hardware

Part No.	Description	Used For
RM632SC100BK	100 pack of 6-32 x 3/8" thread rolling (taptite) screws	Side panel assembly
RM440SN100BK	100 pack of 4-40 speed nuts	Top & bottom panel assembly
RM440MS100BK	100 pack of 4-40 machine screws	Top & bottom panel assembly
RM1032MS100BK	100 pack of 10-32 machine screws	Rack mounting bracket assembly

Replacement Rack Mounting Flanges (Sold in Pairs)

Part No.	Rack Units
RM1UMTGFL	1U
RM2UMTGFL	2U
RM3UMTGFL	3U
RM4UMTGFL	4U

Includes enclosure mounting screws

Adjustable Rear Brackets (Sold in Pairs)

Part No.	Chassis Dimensions			Rack Units
	Height	Width	Depth	
RM1U18BRKT	1.75	16.60	18" (457mm) or more	1U
RM2U18BRKT	3.50	16.60	18" (457mm) or more	2U
RM3U18BRKT	5.25	16.60	18" (457mm) or more	3U, 4U

Available for 18 inch deep versions only.

Replacement Top/Bottom Body Panel (Sold Singly)

Solid Part No.	Vented Part No.	Panel Dimensions	
		Width	Depth
RM0804BKSP	RM0804BKVP	8.30	4.25
RM0808BKSP	RM0808BKVP	8.30	8.00
RM1908BKSP	RM1908BKVP	16.60	8.00
RM1913BKSP	RM1913BKVP	16.60	13.00
RM1918BKSP	RM1918BKVP	16.60	18.00
RM1922BKSP	RM1922BKVP	16.60	22.00
RM1928BKSP	RM1928BKVP	16.60	28.00

Replacement Side Panels

1U	2U	3U	4U	Depth
RM1U04BKSP	RM2U04BKSP	RM3U04BKSP		4.00
RM1U08BKSP	RM2U08BKSP	RM3U08BKSP	RM4U08BKSP	8.00
RM1U13BKSP	RM2U13BKSP	RM3U13BKSP	RM4U13BKSP	13.00
RM1U18BKSP	RM2U18BKSP	RM3U18BKSP	RM4U18BKSP	18.00
RM1U22BKSP	RM2U22BKSP	RM3U22BKSP	RM4U22BKSP	22.00
RM1U28BKSP	RM2U28BKSP	RM3U28BKSP	RM4U28BKSP	28.00

Tags: **RMU, rack mount, rack-mount***Data subject to change without notice*

© 2020. Hammond Manufacturing Ltd. All rights reserved.