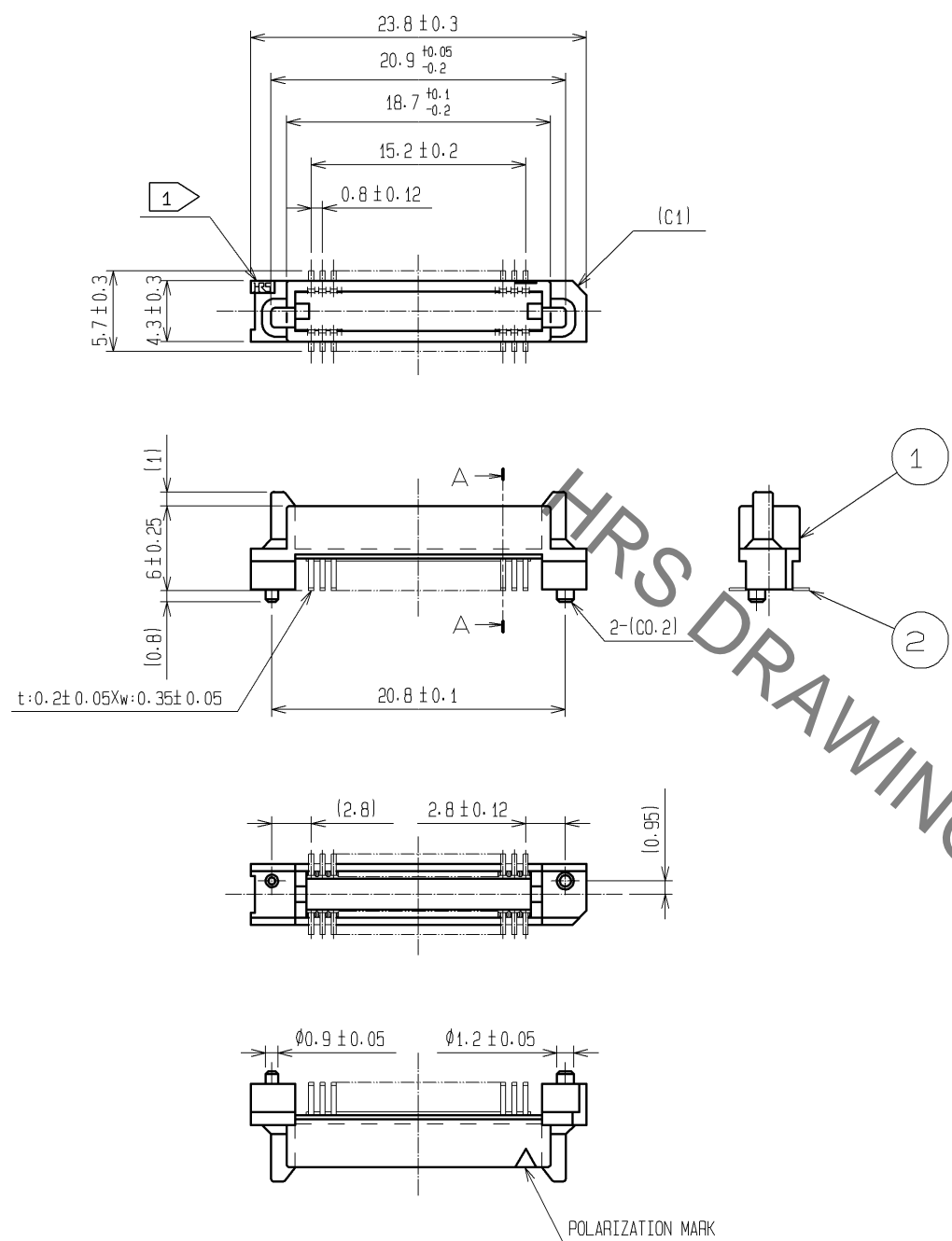
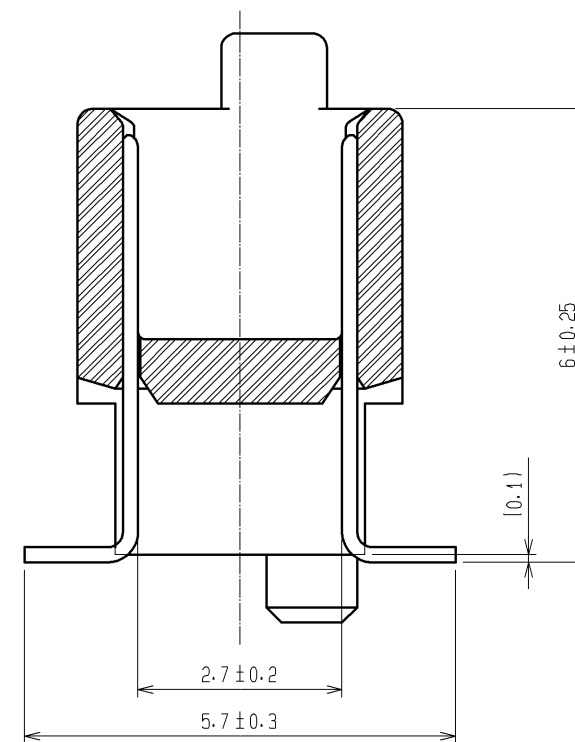


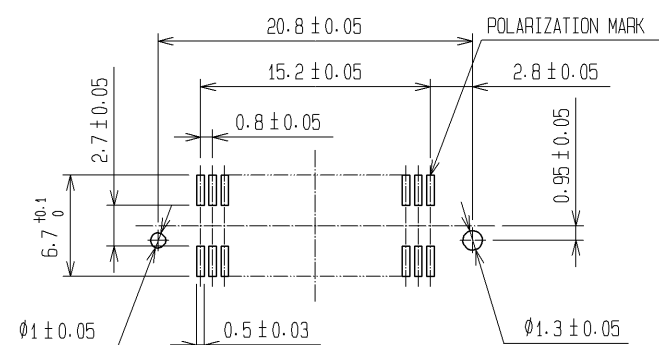
Jun.1.2019 Copyright 2019 HIROSE ELECTRIC CO., LTD. All Rights Reserved.  
In case of consideration for using Automotive equipment / device which demand high reliability, kindly contact our sales window correspondents.



A-A (10:1)



RECOMMENDED LAND PATTERN DIMENSION OF PCB (MOUNTING SIDE)



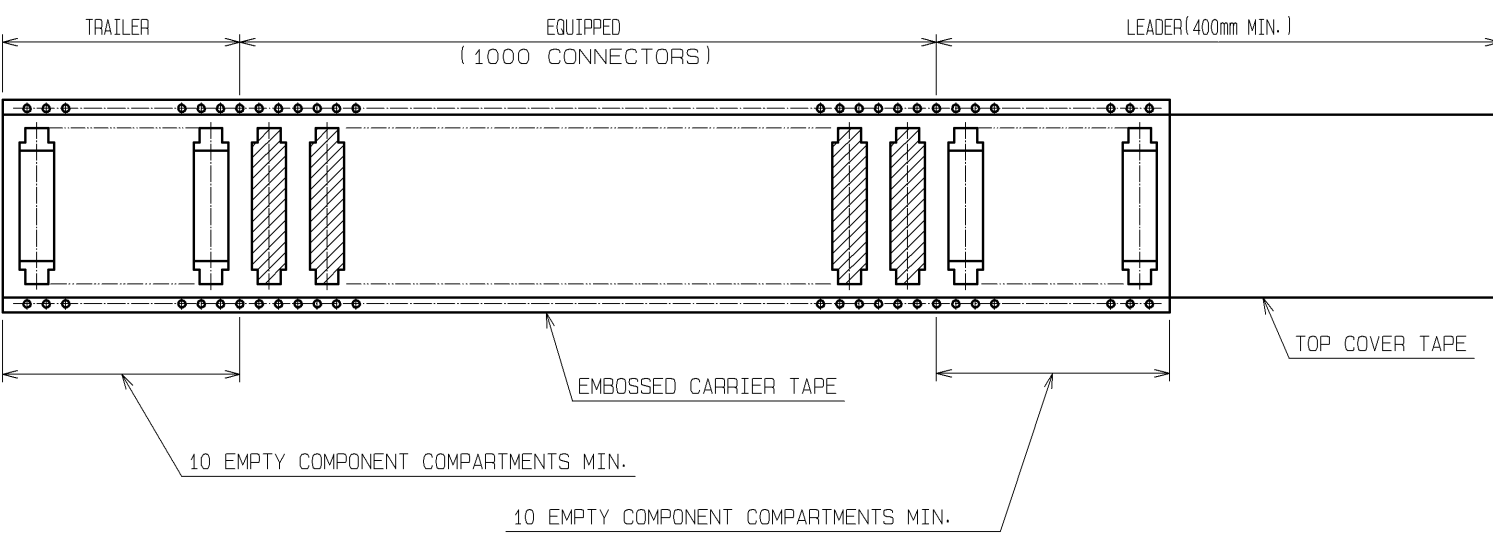
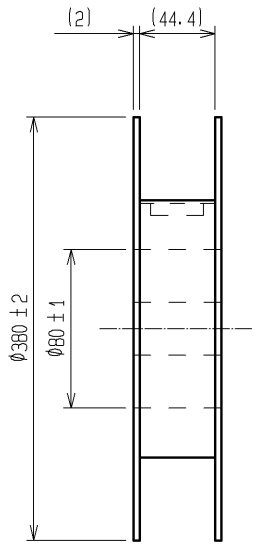
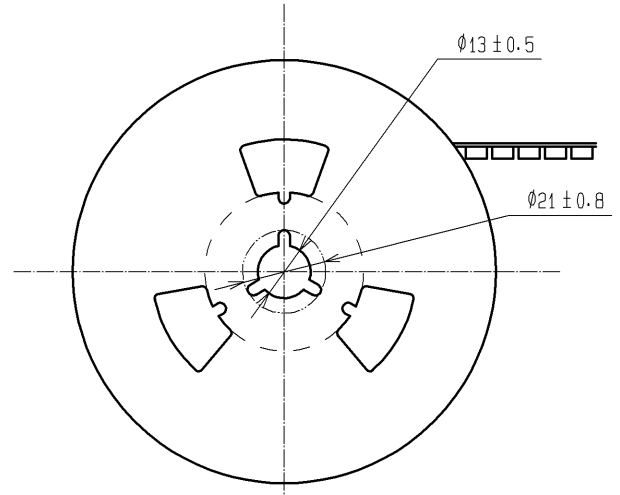
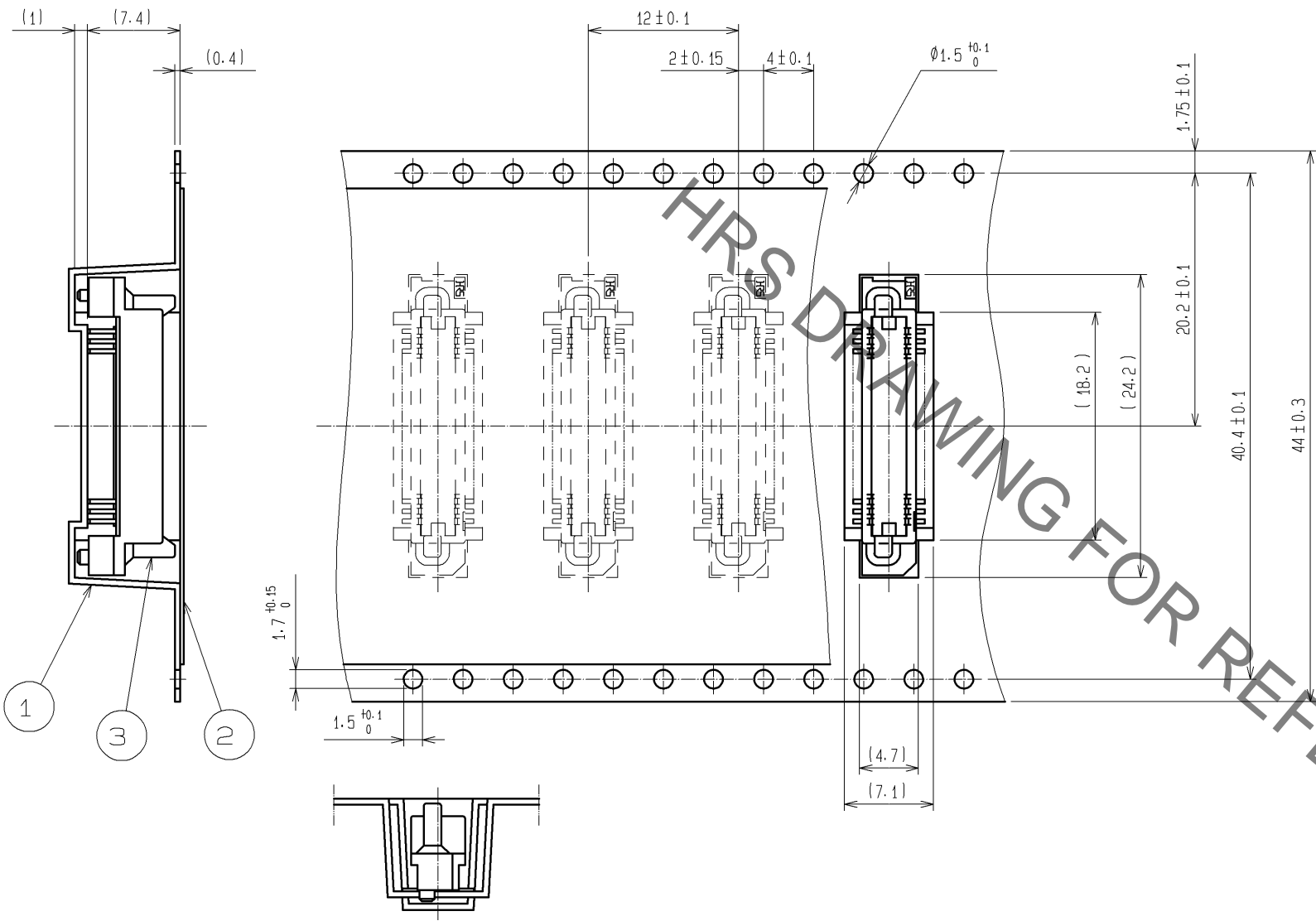
- NOTE
- 1 HRS MARK SHALL BE OPTIONAL.
  - 2 LEAD CO-PLANARITY SHALL BE 0.1mm MAX.
  - 3 EMBOSSED CARRIER TAPE PACKAGING SHALL BE APPLIED FOR THIS PRODUCT. SEE NEXT PAGE FOR DETAILS.
  - 4 FOR MODIFICATION, ETC, PREVENTIVE HOLE FOR SINK MARK MAY BE ADDED ACCORDING TO CIRCUMSTANCES.
  - 5 THE DIMENSIONS IN PARENTHESES ARE FOR REFERENCE.

|                                      |          |                       |            |                          |   |         |      |
|--------------------------------------|----------|-----------------------|------------|--------------------------|---|---------|------|
| 1                                    | PPS      | LIGHT BROWN (UL94V-0) | 2          | PHOSPHOR BRONZE          | CONTACT AREA : GOLD 0.1μm min.<br>LEAD AREA : TIN-PLATING 1μm min.<br>UNDER PLATING : NICKEL 1μm min. |         |      |
| NO.                                  | MATERIAL | FINISH . REMARKS      | NO.        | MATERIAL                 | FINISH . REMARKS  |         |      |
| UNITS<br>mm                          |          | SCALE<br>2 : 1        | COUNT<br>△ | DESCRIPTION OF REVISIONS | DESIGNED  | CHECKED | DATE |
| <b>HRS</b> HIROSE ELECTRIC CO., LTD. |          | APPROVED : HS. OKAWA  | 07. 05. 07 | DRAWING NO.              | EDC3-084967-22  |         |      |
|                                      |          | CHECED : HS. OZAWA    | 07. 05. 07 | PART NO.                 | FX6-40P-0.8SV2(92)  |         |      |
|                                      |          | DESIGNED : KT. DOI    | 07. 04. 27 | CODE NO.                 | CL576-0043-3-92   |         |      |
|                                      |          | DRAWN : TS. MIYAKI    | 07. 04. 27 |                          | △ 1/2   |         |      |

# DRAWING FOR PACKING

UNREELING DIRECTION

REEL DIMENSION (FREE)



NOTE 1 THE DIMENSIONS IN PARENTHESES ARE FOR REFERENCE.  
2 1 REEL : 1000 CONNECTORS.

| 2                    | POLYESTER   | TOP COVER TAPE        |                             |          |                          |
|----------------------|-------------|-----------------------|-----------------------------|----------|--------------------------|
| 1                    | POLYSTYRENE | EMBOSSED CARRIER TAPE | 3                           |          | (CONNECTOR)              |
| NO.                  | MATERIAL    | FINISH . REMARKS      | NO.                         | MATERIAL | FINISH . REMARKS         |
| UNITS                | mm          | SCALE                 | 2 : 1                       | COUNT    | DESCRIPTION OF REVISIONS |
|                      |             |                       |                             |          | DESIGNED                 |
|                      |             |                       |                             |          | CHECKED                  |
|                      |             |                       |                             |          | DATE                     |
| APPROVED : HS. OKAWA |             | 07.05.07              | DRAWING NO. EDC3-084967-22  |          |                          |
| CHECKED : HS. OZAWA  |             | 07.05.07              | PART NO. FX6-40P-0.8SV2(92) |          |                          |
| DESIGNED : KT. DOI   |             | 07.04.27              | CODE NO. CL576-0043-3-92    |          |                          |
| DRAWN : TS. MIYAKI   |             | 07.04.27              |                             |          |                          |



In case of consideration for using Automotive equipment / device which demand high reliability, kindly contact our sales window correspondents.