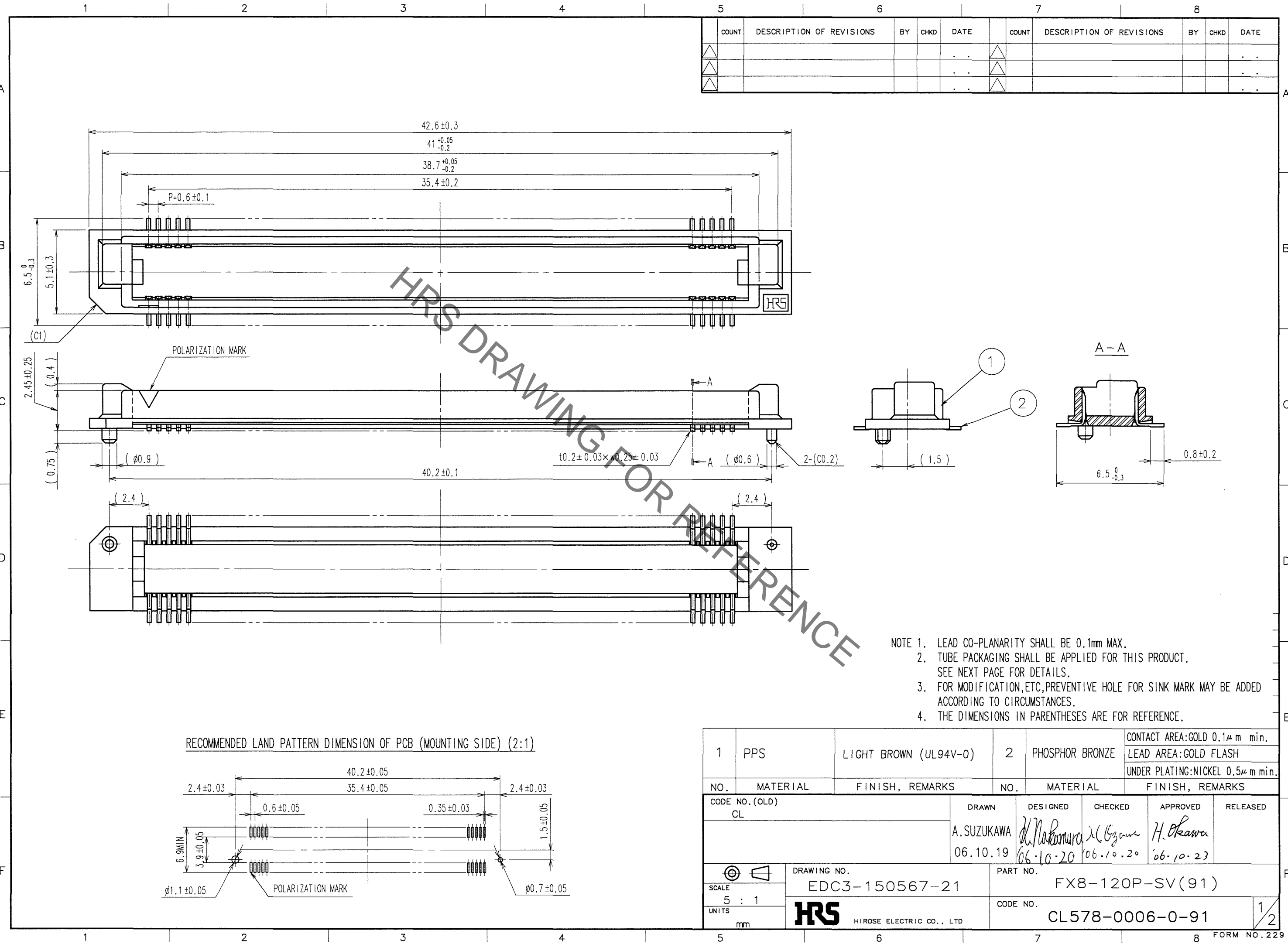
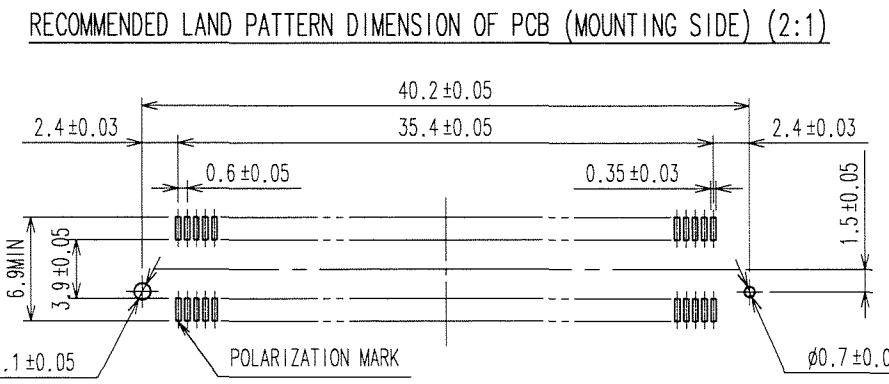


Jun.1.2019 Copyright 2019 HIROSE ELECTRIC CO., LTD. All Rights Reserved.
 In case of consideration for using Automotive equipment / device which demand high reliability, kindly contact our sales window correspondents.



COUNT	DESCRIPTION OF REVISIONS	BY	CHKD	DATE	COUNT	DESCRIPTION OF REVISIONS	BY	CHKD	DATE
△				..	△				..
△				..	△				..
△				..	△				..

- NOTE 1. LEAD CO-PLANARITY SHALL BE 0.1mm MAX.
 2. TUBE PACKAGING SHALL BE APPLIED FOR THIS PRODUCT. SEE NEXT PAGE FOR DETAILS.
 3. FOR MODIFICATION,ETC,PREVENTIVE HOLE FOR SINK MARK MAY BE ADDED ACCORDING TO CIRCUMSTANCES.
 4. THE DIMENSIONS IN PARENTHESES ARE FOR REFERENCE.

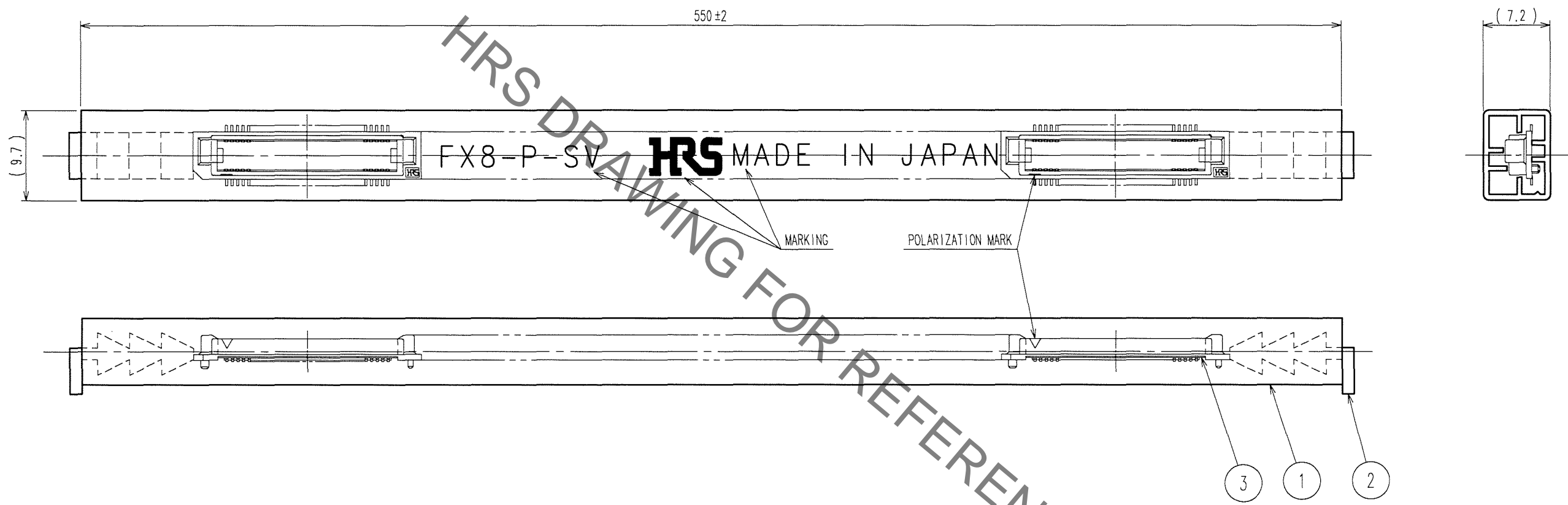


1	PPS	LIGHT BROWN (UL94V-0)	2	PHOSPHOR BRONZE	CONTACT AREA:GOLD 0.1μ m min. LEAD AREA:GOLD FLASH UNDER PLATING:NICKEL 0.5μ m min.
NO.	MATERIAL	FINISH, REMARKS	NO.	MATERIAL	FINISH, REMARKS
CODE NO. (OLD) CL		DRAWN A. SUZUKAWA 06.10.19	DESIGNED <i>K. Nakamura</i> 06.10.20	CHECKED <i>M. Ozawa</i> 06.10.20	APPROVED <i>H. Okawa</i> 06.10.23
SCALE 5 : 1		DRAWING NO. EDC3-150567-21	PART NO. FX8-120P-SV(91)		
UNITS mm		HRS HIROSE ELECTRIC CO., LTD	CODE NO. CL578-0006-0-91		1/2

TO

Jun.1.2019 Copyright 2019 HIROSE ELECTRIC CO., LTD. All Rights Reserved.
In case of consideration for using Automotive equipment / device which demand high reliability, kindly contact our sales window correspondents.

COUNT	DESCRIPTION OF REVISIONS	BY	CHKD	DATE	COUNT	DESCRIPTION OF REVISIONS	BY	CHKD	DATE
△					△				
△					△				
△					△				



HRS DRAWING FOR REFERENCE

- NOTE 1. 1 TUBE : 12 CONNECTORS.
2. THE DIMENSIONS IN PARENTHESES ARE FOR REFERENCE.

2	POLYVINYL CHLORIDE	STOPPER	3	(CONNECTOR)		
1	POLYVINYL CHLORIDE	TUBE				
NO.	MATERIAL	FINISH, REMARKS	NO.	MATERIAL	FINISH, REMARKS	
CODE NO. (OLD) CL		DRAWN A. SUZUKAWA '06.10.19	DESIGNED <i>Nakamura</i> '06.10.20	CHECKED <i>Ogawa</i> '06.10.20	APPROVED <i>H. Okawa</i> '06.10.23	RELEASED ..
DRAWING NO. EDC3-150567-21			PART NO. FX8-120P-SV(91)			
SCALE FREE			CODE NO. CL578-0006-0-91			
UNITS mm			HRS HIROSE ELECTRIC CO., LTD			

TO