




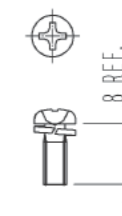
4	STAINLESS STEEL		9	STEEL	NICKEL PLATING				
3	STAINLESS STEEL	NICKEL PLATING	8	STEEL	NICKEL PLATING				
2	ALUMINIUM ALLOY		7	STEEL	NICKEL PLATING				
1	ALUMINIUM ALLOY	△	6	STAINLESS STEEL					
			5	STAINLESS STEEL					
NO.	MATERIAL	FINISH . REMARKS		NO.	MATERIAL	FINISH . REMARKS			
UNITS mm		SCALE 1 : 1		COUNT 1	DESCRIPTION OF REVISIONS DIS-E-004948		DESIGNED TY. MIURA	CHECKED NM. NISHIMATSU	DATE 14. 02. 19
	HIROSE ELECTRIC CO. . LTD.	APPROVED : RI. TAKAYASU		13. 04. 25	DRAWING NO.		EDC3-128334-00		
		CHECKED : RI. TAKAYASU		13. 04. 25	PART NO.		PQ50WT-6U-PC1L		
		DESIGNED : YH. MAMADA		13. 04. 25	CODE NO.		CL236-2074-4-00		
		DRAWN : YH. MAMADA		13. 04. 25					
								△	1/3

DRAWING FOR REFERENCE: This is subject to change without notice  
05/31/2014

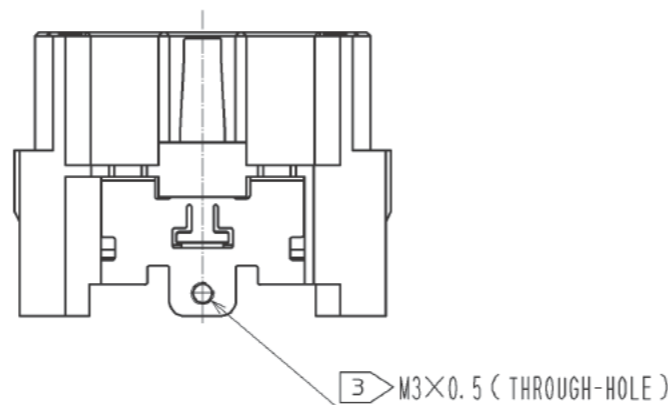
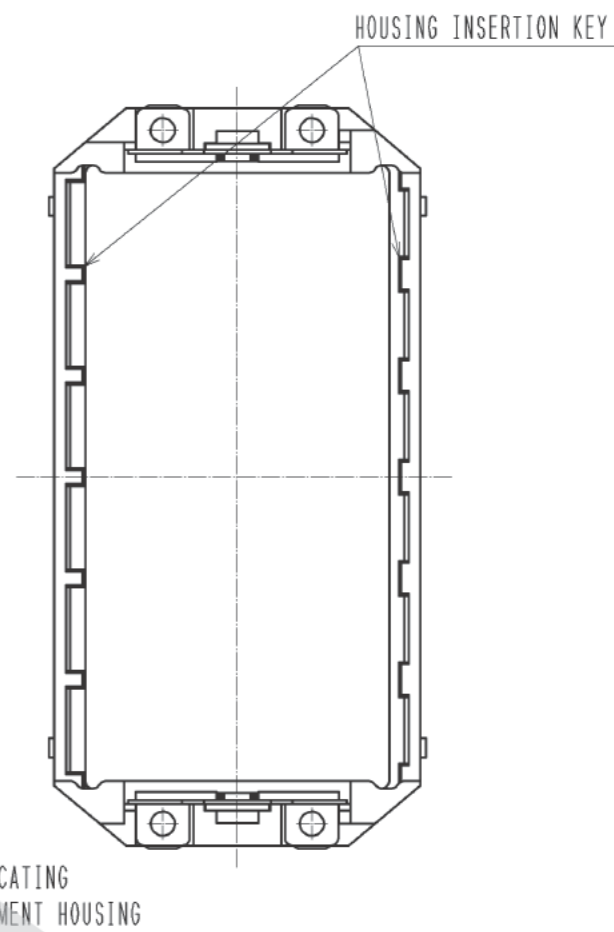
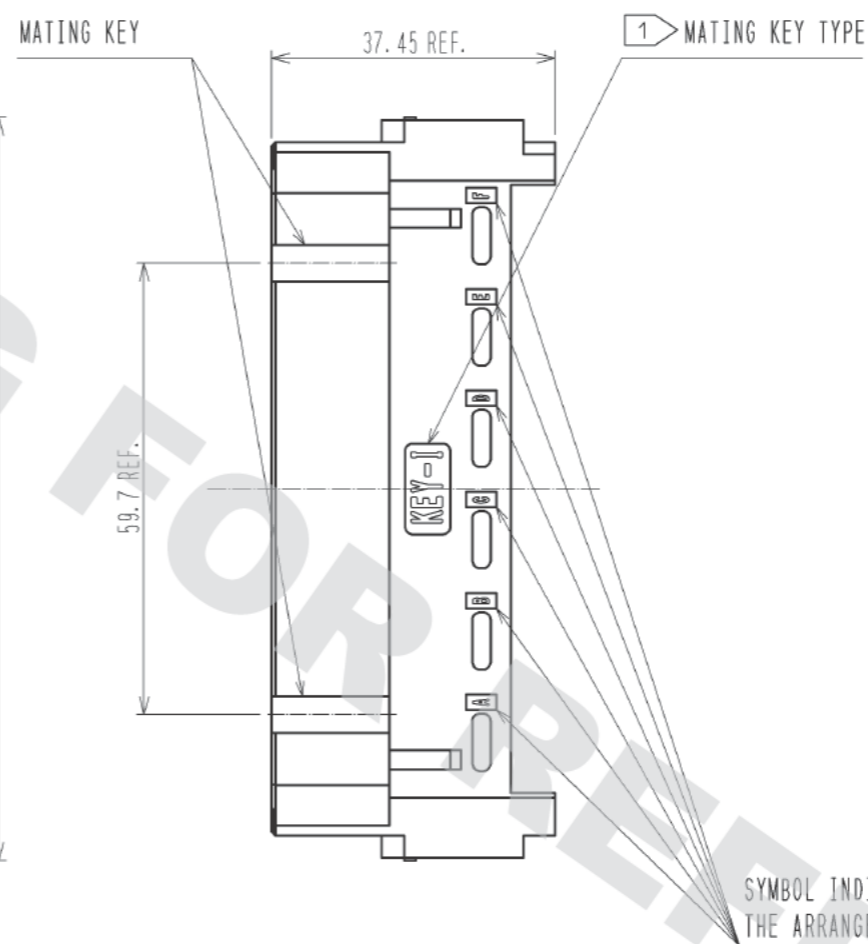
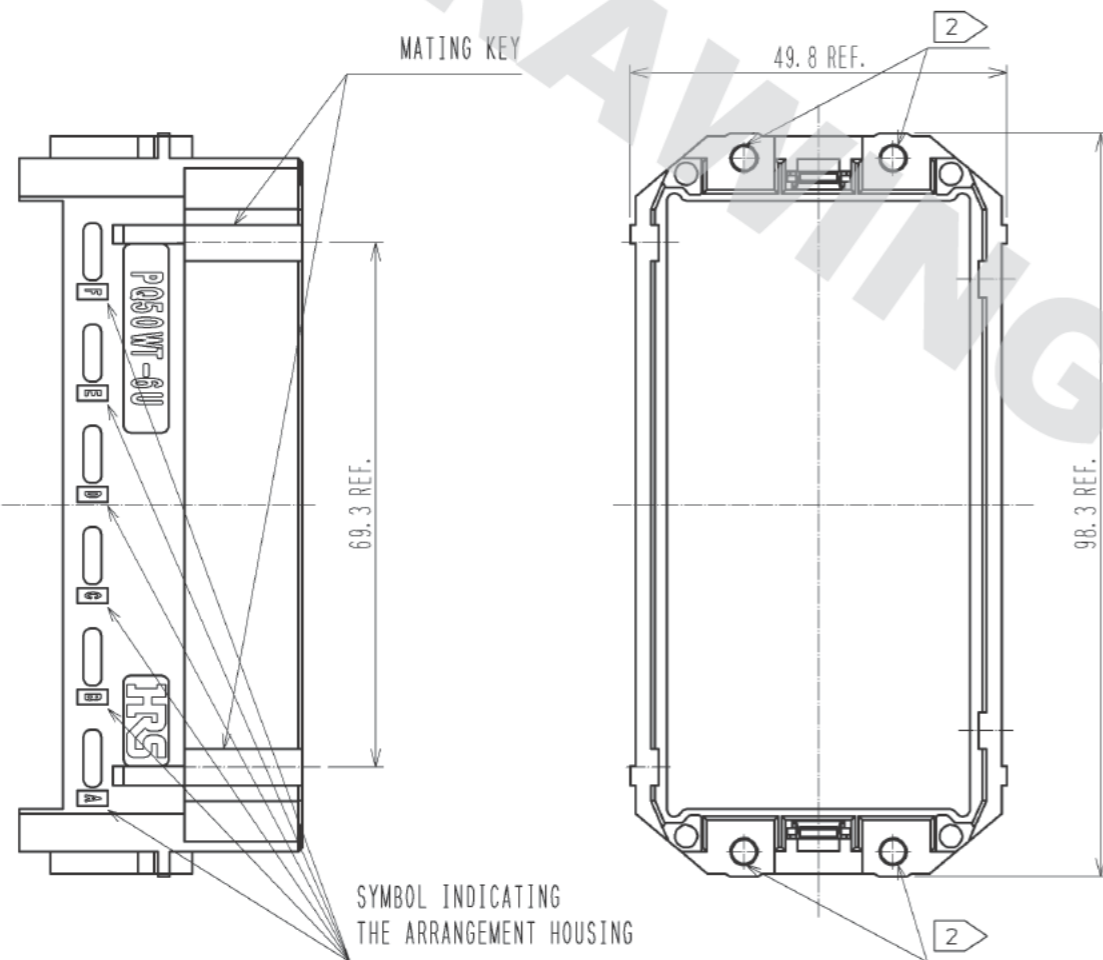
PLUG CASE  
( REF NO. ②・③ ASSEMBLY )

③ M3×0.5 ( THROUGH-HOLE )

② SCREW FOR ATTACH TO THE PLUG CASE  
( REF NO. ⑨ ATTACHMENT )



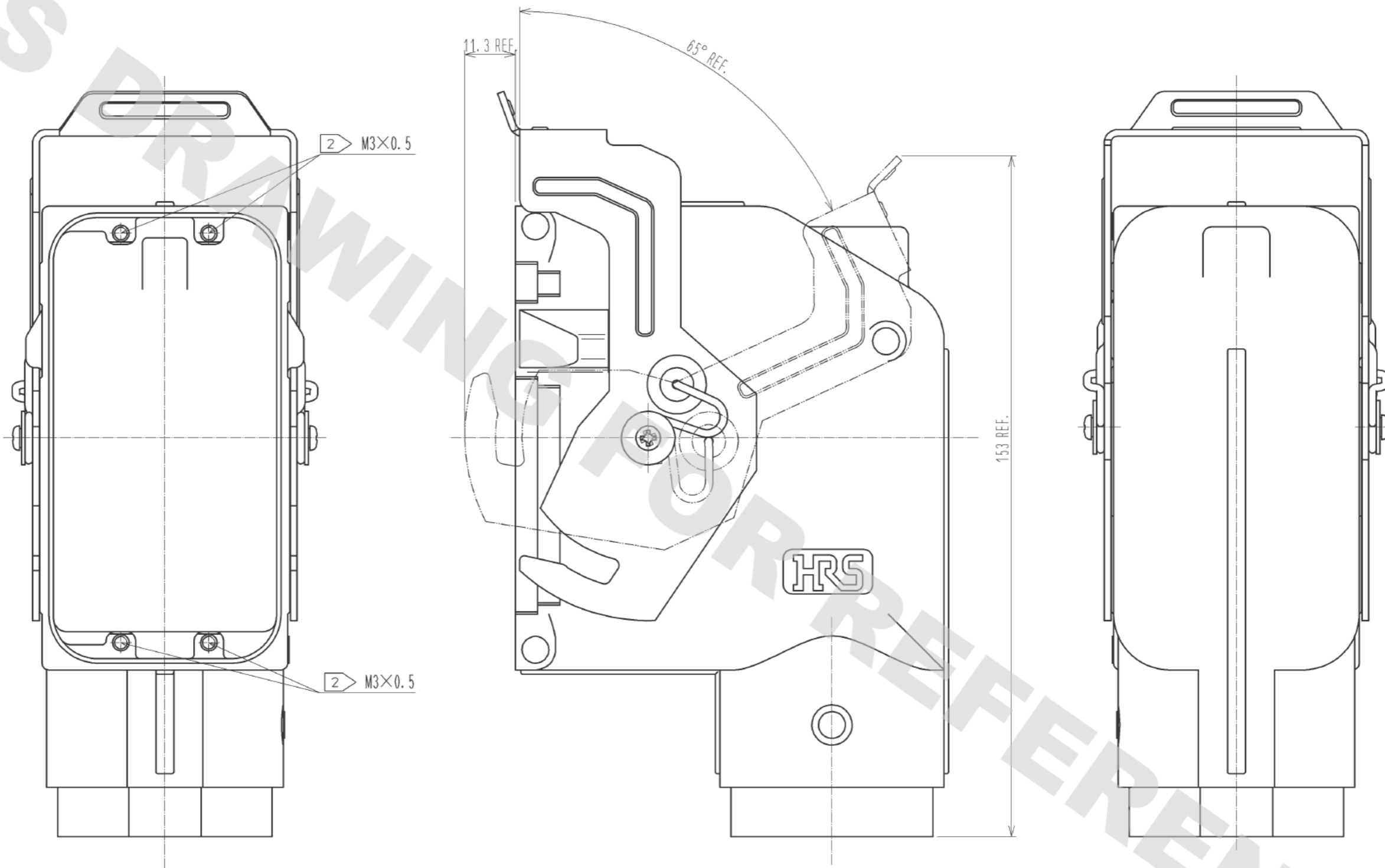
JIS B 1188 : CROSS RECESSED PAN HEAD MACHINE SCREW WITH  
CAPTIVE WASHER M3×0.5×8



HRS	DRAWING NO.	EDC3-128334-00
	PART NO.	PQ50WT-6U-PC1L
	CODE NO.	CL236-2074-4-00
		④ 2/3

# COVER CASE

( REF NO. ①・④・⑤・⑥・⑦・⑧ ASSEMBLY )



**HRS**

DRAWING NO.	EDC3-128334-00
PART NO.	PQ50WT-6U-PC1L
CODE NO.	CL236-2074-4-00

3/3