

SPECIFICATIONS

Mechanical

Durability: 100 Cycles

Insertion/Extraction force: 40N Max./11.5N min

Physical

Cage: Copper Alloy

Plating: Tin/Lead plating over Nickle underplating

Operating Temperature: -55°C to + 85°C

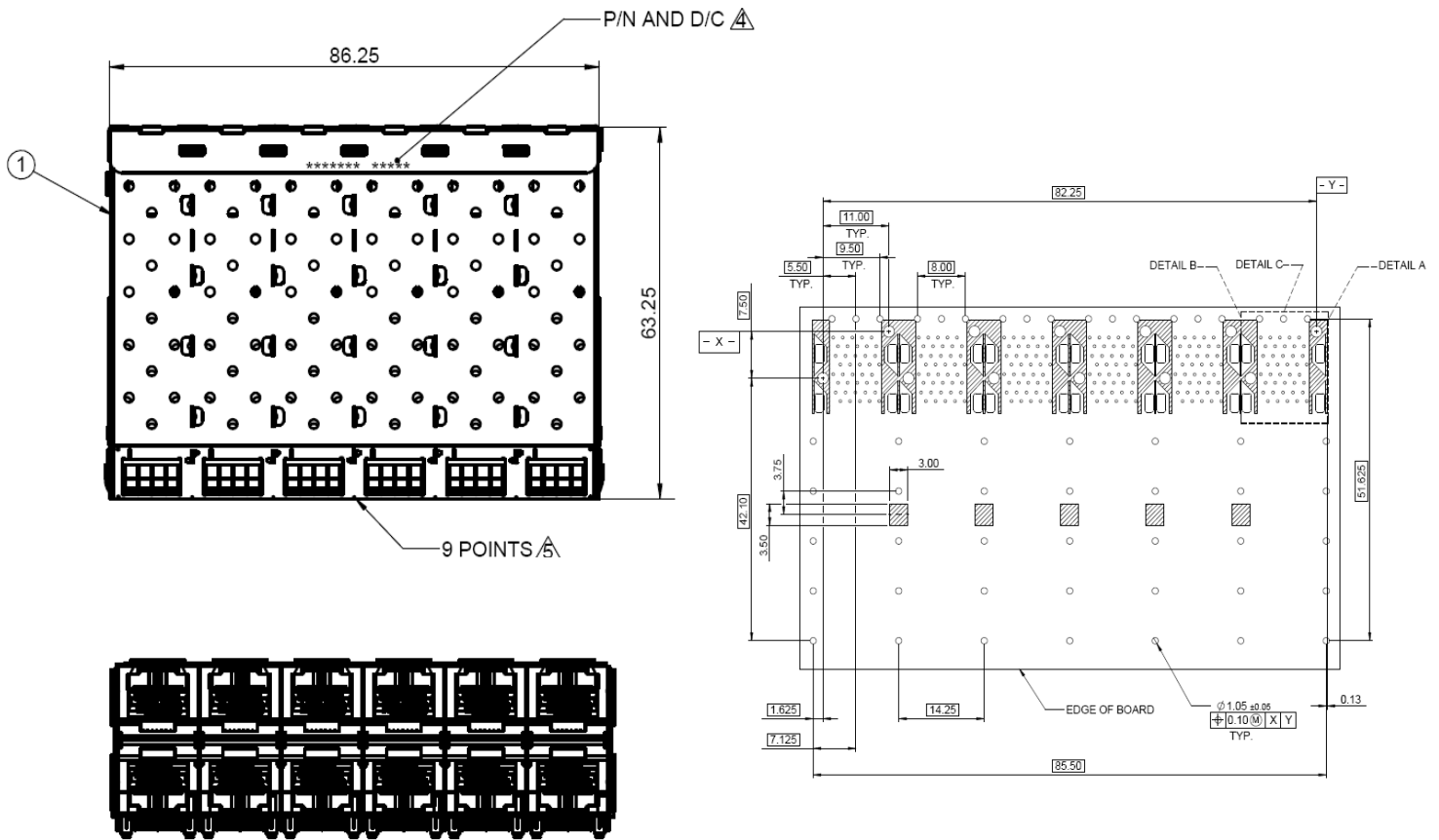
SFP+ CAGE

3S Series,

SFP+ (Small Form-Factor Pluggable Plus)

Cage, 2X6, press-fit type w/o lp

DRAWING



ORDERING INFORMATION

PART NUMBER

3 S 1 0 2 0 F 3 - E Q 4 - 4 F

E=Without lightpipe

4= Press-fit type

F= Satin tin

Package type

4= Tracy