

SPECIFICATIONS

HDMI Connector

Mechanical

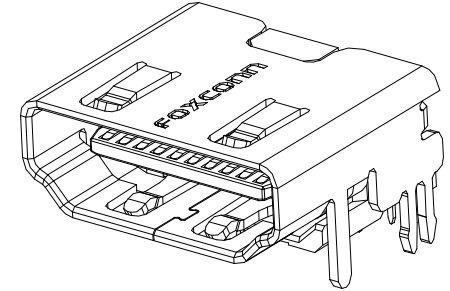
Mating Force: initial 4.5kgf max.
Unmating Force: initial 1.0~4.0kgf
Durability: 10000 cycles.

Electrical

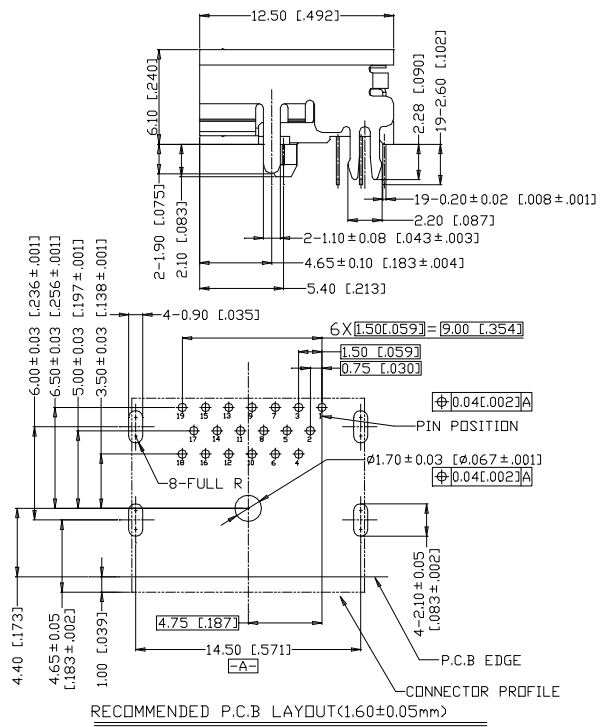
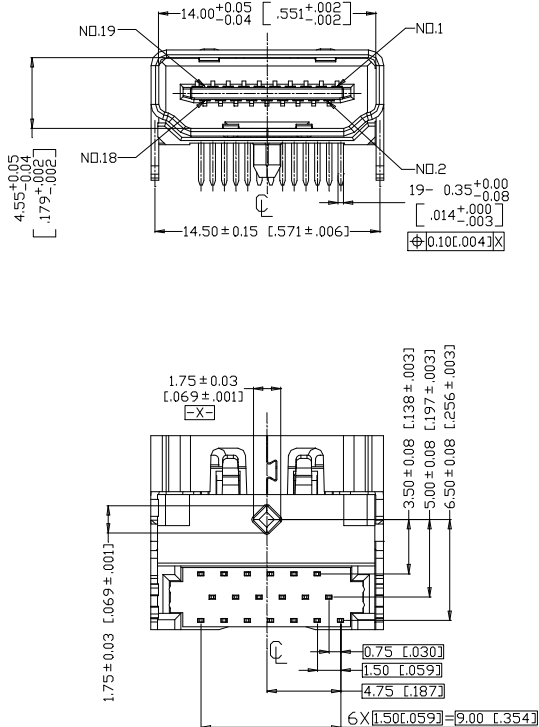
Voltage Rating: 40V AC
Current Rating: 0.5A min.
Contact Resistance: Initial excluding conductor resistance
 10mΩ max.
Dielectric Withstanding Voltage: 500V AC (Rms.)
Insulation Resistance: Unmated plug 100MΩ min. at 500V DC.

Physical

Housing: Thermoplastic, UL 94V-0 rated in black Color
Contact: Copper alloy
Plating: See "ORDERING INFORMATION"
Solder Pad: Copper alloy
Operating Temperature: -40°C to +85°C



DRAWING



ORDERING INFORMATION

PRODUCT NO.: QJ 1 1 1 9 1 - WFB3 - 4 F

