

SPECIFICATIONS

Mechanical

Mating Force: 4.50Kg (9.91Lb) max.
Unmating Force: 0.90~2.70Kg (1.98~5.95Lb)
Durability: 500 Cycles

Electrical

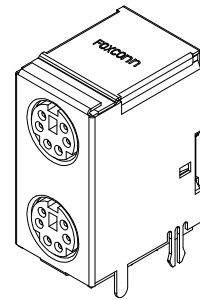
Voltage Rating: 30V
Current Rating: 1A
Contact Resistance: 30mW max.
Dielectric Withstanding Voltage: 750V AC/1min min.
Insulation Resistance: 1000MW min.

Physical

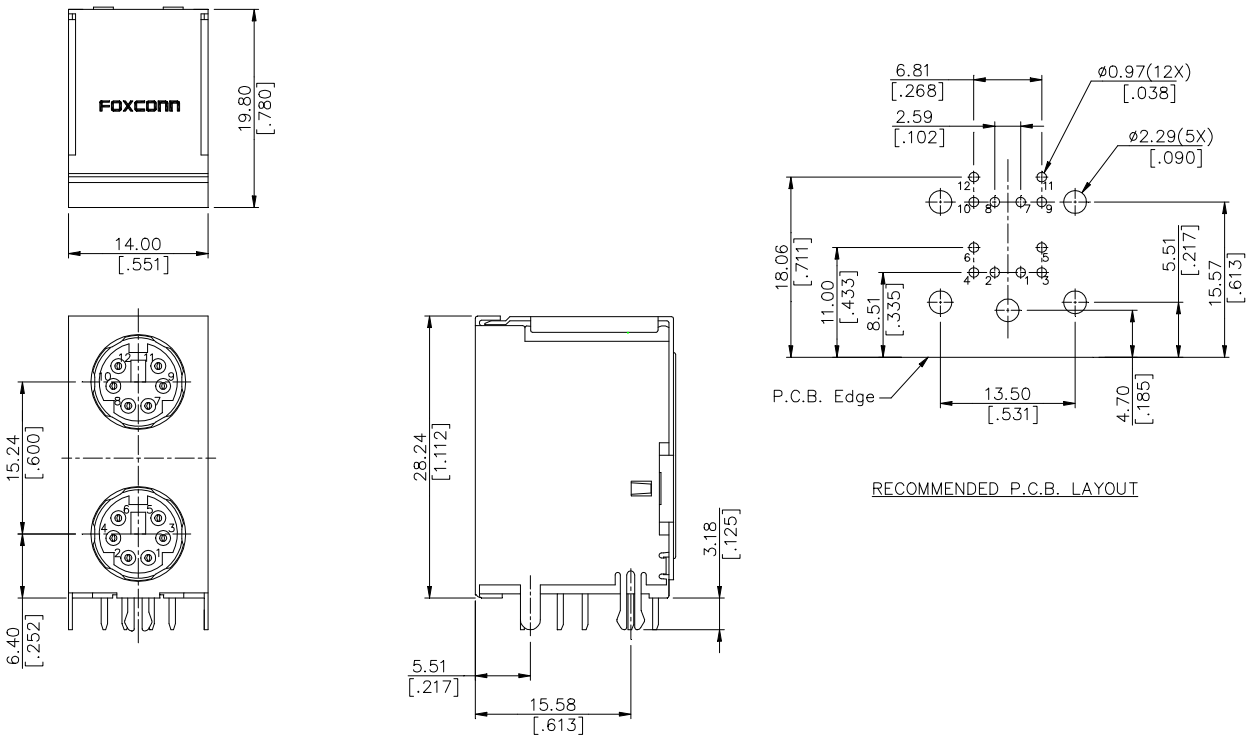
Housing: Thermoplastic, UL 94V-0 rated
 Mold Color: Top Housing is Green, Bottom Housing is Purple
Contact: Copper alloy
Plating: See "ORDERING INFORMATION"
Metal Shell: Steel alloy
Operating Temperature: -55 to +85

Mini Din Connector

MH Series
Double, R/A, T/H, PC99
12 Pos.



DRAWING



ORDERING INFORMATION

PRODUCT NO.: MH 1 1 0 6 * - P34 -4 F

- Mini Din Series: MH
- Terminator Type: 1 (1=Right Angle Through Hole Type)
- Contact Design Type: 1 (1=Female)
- Body Type: 0 (0=Standard)
- Lead Free Code: *
- Packing Code: 4 (4=Tray Packing)
- Modify Code: -
- Contact Area Plating: P (1=Gold Flash, 3=30u" Gold, 7=15u" Gold)
- No. of Pos.: 4 (6=6 Pos.)