

1

2

3

4

PLATING ACTIVE ZONE			CHARACTERISTICS					
500 mating/unmating Ni: 2µm 0/+2µm Au: 1.27µm min	500 mating/unmating Cu flash Ni P : 2µm 0/+2µm Au: 0.2µm min (equivalent 0.8µm Au)	200 mating/unmating Cu flash Ni P : 2µm 0/+2µm Au: 0.15µm min (equivalent 0.4 µm Au)	CURRENT max A	AWG WIRE	mm <sup>2</sup> AREA	ØA <sup>+0</sup> -0.05	ØB <sup>+0</sup> -0.05	Clip colour
8638PPC4007LF	8638PPC4006LF	8638PPC4005LF	40	8-10	5-8	4.70	5.50	BLUE
8638PPC3007LF	8638PPC3006LF	8638PPC3005LF	30	9	6	3.75	4.75	WHITE
8638PPC2007LF	8638PPC2006LF	8638PPC2005LF	20	12-14	2-3	2.80	3.70	RED
8638PPC1007LF	8638PPC1006LF	8638PPC1005LF	10	16-18	0.9-1.3	1.80	2.55	BLACK

**NOTE: RoHS INFORMATIONS**

- The "LF" products meet European union Directives and regulations as described in GS-22-008
- Termination plating spec: Sn pure matte
- Packaging spec: see GS-14-920

**Materials and finish**

Active zone: CuZn40 Pb3. Plating see table  
Termination zone (crimping sleeve): CuZn40Pb3  
Plating 2µm 0/+2µm Cu - 3µm 0/+3µm Tin pure matte  
Clip : Thermoset plastic

**Technical characteristics**

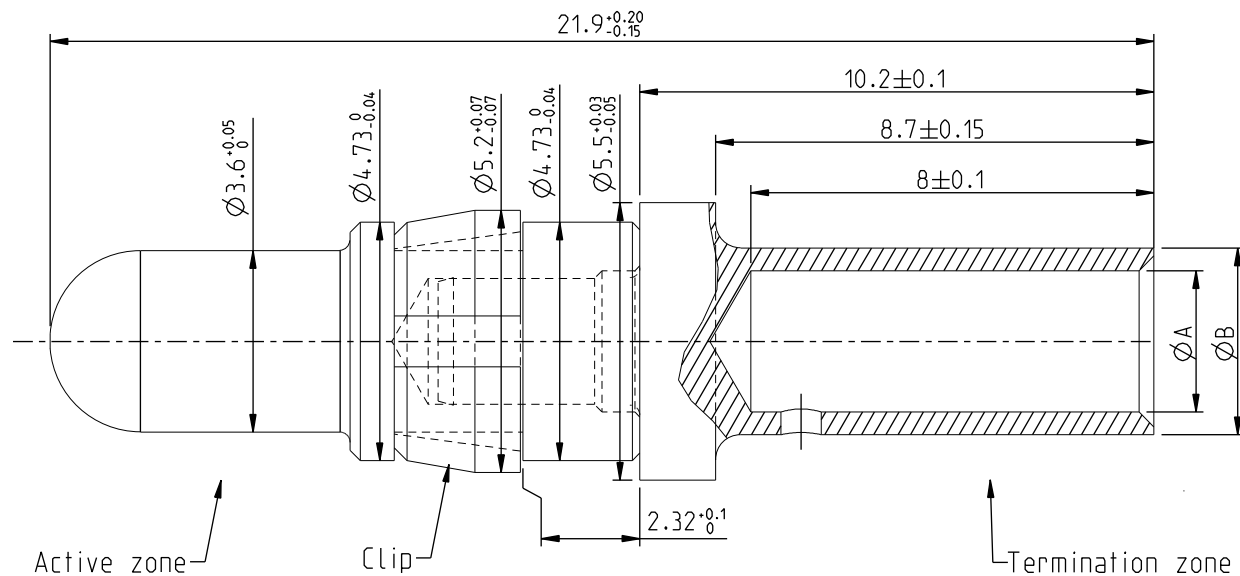
Peak voltage: 750 Veff.  
Operating voltage: 500 Veff.  
Temperature range -55 °C +125 °C  
Packaged per 100  
Current capability : see table

**Mechanical characteristics :**

Crimping test: according to MILC39029  
Mechanical endurance: 200 or 500 matings/unmatings (see table).  
Contact insertion force in insulator:  
60N maxi in a hole of 4.80 mm

**Examination of product:**

Remove all burrs and sharp edges 0.08 maxi  
No scratch allowed



Mark with				Material SEE TABLE		Spec ref	
/				Mat code		surface -	tolerance
				Heatreat		ISO 1302	405
				Plating/Finish SEE TABLE			1101
rev	ecn no	dr	date	Dr	JARRY	2002/02/28	
N	F10-0076	LSA	2010/07/22	Eng	PESSON	2002/02/28	
-	-	-	-	Chr	LEGARE	2002/02/28	
H	LS06-0097	LGO	2006/07/27	Appr	LEGARE	2002/02/28	
J	LS06-0029	MPE	2008/01/28	<b>FCI</b> Title MALE CONTACT FOR CRIMPED CONNECTION			
K	F09-0054	LSA	2009/06/10				
L	F10-0031	GPE	2010/04/12				
M	F10-0065	LSA	2010-06-25				
				Pro/E file	catalog no	-	
				Product family D-sub		size A3	Scale 10:1
				Model Name 8638PPC200XLF		ECN F10-0076	
				Model Revision 1		REL Level	CONCEPT
				dwg no C01-8638-0325		Rev. N	
				Customer		sheet 1 of 1	

REV C - 2006-03-28

1

2

3

4