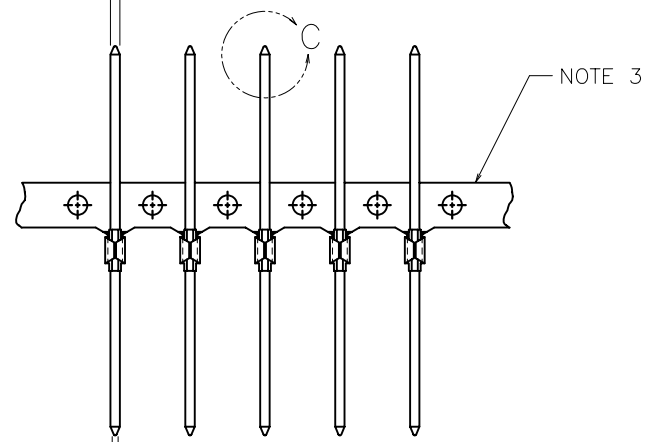


PRODUCT NUMBER
SEE TABLE

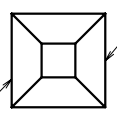
$\pm .005 / .13$

$\square .025 \pm .001$
 0.64 ± 0.3



NOTE 3

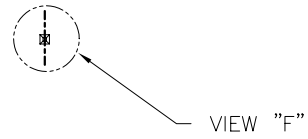
$\square .016$
 0.41
MAX FLAT
EXCEPT PER NOTE 4



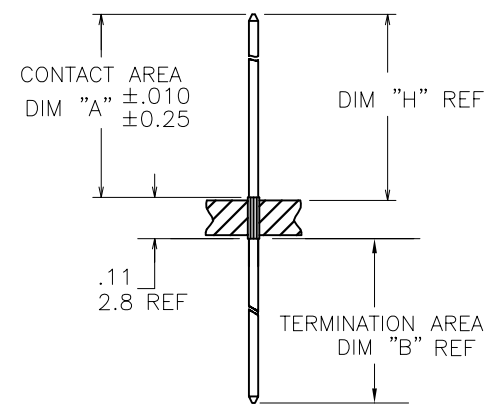
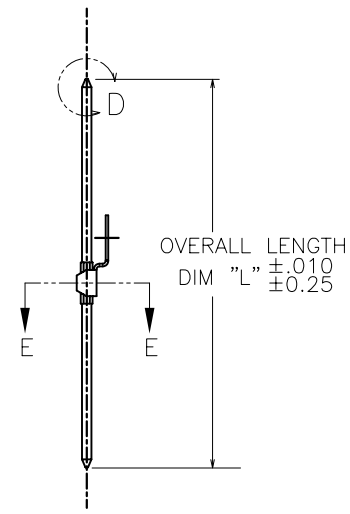
TWO SIDES OF LEAD-IN
NOT PLATED TYP BOTH ENDS

NOTE 6

VIEW "F"
SCALE: 10/1



VIEW "F"

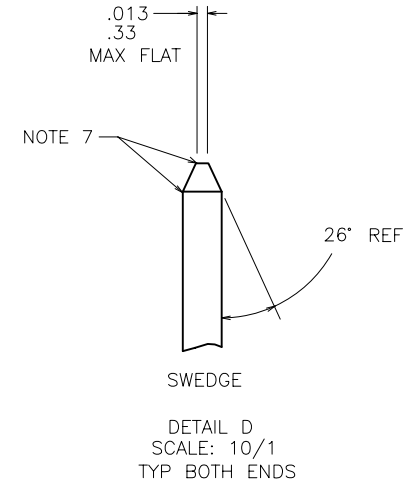
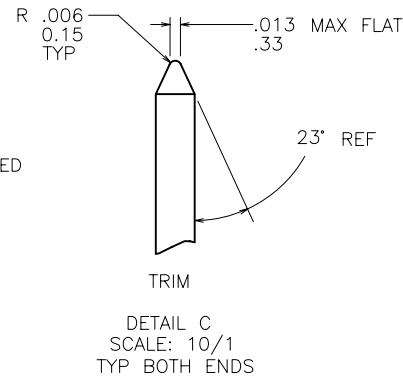


SECTION THRU PC BOARD

mat'l. code SEE NOTE 1		surface ASME Y14.5		tolerance ASME Y14.5		projection		product family PIN PRODUCTS	
ltr	ec'n no	dr	date	tolerances unless otherwise specified		INCH/MM		title BERGPIN® .200"[5.08]cc .041"[1.04] DIA. STAR .110"[2.79] LONG STAR	
U	V07-0009	HTB	2007-01-08	angles	XX+01/XX+3	scale 2:1		dwg no sheet 1 of 4 size	
V	V08-0354	HTB	2008-08-25	0°±2'	XXX+005/XXX+13			76602 A4	
P	V71499	HTB	1997-10-31	dr	XXXX+0020/XXX+051			type CUSTOMER Drawing	
R	V01594	JRW	2000-07-13	engr					
S	V05-0400	HTB	2005-04-29	chr					
T	V06-0684	HTB	2006-07-25	appd					
sheet	revision	v	v	v	v				
index	sheet	1	2	3	4				

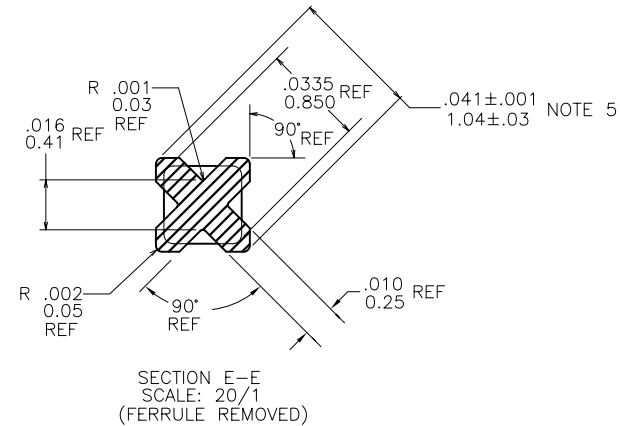
PRODUCT NUMBER NOTE 10	PLATING	UNDERPLATING
76602-1YY	30μ"/.76μ MIN Au	50μ"/1.27μ MIN Ni
76602-1YYLF		
76602-3YY	50μ"/1.27μ MIN Au	50μ"/1.27μ MIN Ni
76602-3YYLF		
76602-4YY	120μ"/3.05μ MIN 93/7 SnPb	50μ"/1.27μ MIN Ni
76602-4YYLF	100μ"/2.54μ MIN Sn (NOTE 11)	50μ"/1.27μ MIN Ni
76602-5YY	30μ"/.76μ MIN GXT™	50μ"/1.27μ MIN Ni
76602-5YYLF		
76602-6YY	15μ"/.38μ MIN GXT™	50μ"/1.27μ MIN Ni
76602-6YYLF		
76602-9YY	15μ"/.38μ MIN Au	50μ"/1.27μ MIN Ni
76602-9YYLF		

DISCONTINUED



NOTES:

- ① PIN MATERIAL: 3/4 HARD PHOS BRONZE PER ASTM B-159-66
2. SEE PRODUCT SPECIFICATION BUS-12-064 FOR P.C. BOARD HOLE DIAMETER AND P.C. BOARD HOLE PLATING INFORMATION.
- ③ FOR MANUFACTURING PURPOSES ONLY.
- ④ DOUBLE ENDED PINS AS MARKED MUST MEET SPECS IN VIEWS C AND D ON BOTH ENDS. OTHERS TO HAVE .016 [0.41] MAX DIM ON BOTTOM END OF PIN.
- ⑤ THE .041±.001 [1.04±0.03] FEATURE SHALL BE CONCENTRIC TO THE WIRE DIAGONAL WITHIN .004 [0.10] TIR.
- ⑥ .003 [0.08] R MAX TYP (4) ON WIRE WRAP PORTION OF PIN.
- ⑦ BURNISH MARKS ON PIN PERMITTED. BURR: .003 [0.08] MAX, BULGE: .0005 [0.013] MAX TYP.
8. SAME AS 76644, EXCEPT WITHOUT SOLDER WASHER.
9. CENTERLINE OF TERMINAL MUST BE IN TRUE POSITION WITHIN .016 [0.41] DIA WITH RESPECT TO THE HOLE AXIS AFTER INSERTION IN P.C. BOARD.
- ⑩ ADD AN LF SUFFIX TO PART NUMBERS FOR PRODUCT THAT MEETS EUROPEAN UNION DIRECTIVES AND OTHER COUNTRY REGULATIONS AS DESCRIBED IN GS-22-008.
- ⑪ THIS PRODUCT HAS 100% TIN PLATING IN THE INTERFACE AND HAS NOT BEEN TESTED FOR WHISKER GROWTH IN ALL INTERCONNECT ENVIRONMENTS.



mat'l. code SEE NOTE 1		surface ASME Y14.5	tolerance ASME Y14.5	projection	product family PIN PRODUCTS
ltr	ecn no	dr	date	tolerances unless otherwise specified	title BERGPIN® .200"[5.08]cc .041"[1.04] DIA. STAR .110"[2.79] LONG STAR
v				angles XX+01/XX+3 XXX+005/XXX+13	INCH/MM
				0°±2'	scale 1:1
		dr	J. BAIR	1990-08-08	dwg no
		engr	M. LEACH	1990-08-08	76602
		chr	E. IORFIDO	1992-10-22	sheet 2 of 4
		appd	E. IORFIDO	1992-10-22	size A4
sheet index	revision sheet				type CUSTOMER Drawing



PRODUCT NUMBER	CONTACT AREA		TERM. AREA		DIM H FOR .093/2.36 BOARD		DIM H FOR .125/3.18 BOARD		OVERALL LENGTH		NOTE 4
	DIM A	DIM A	DIM B	DIM B	ENGLISH	METRIC	ENGLISH	METRIC	ENGLISH	METRIC	
	ENGLISH	METRIC	ENGLISH	METRIC	ENGLISH	METRIC	ENGLISH	METRIC	ENGLISH	METRIC	
76602-X01	0.240	6.10	0.040	1.02	0.248	6.30	0.232	5.89	0.390	9.91	--
76602-X02	0.270	6.86	0.040	1.02	0.278	7.06	0.262	6.65	0.420	10.67	--
76602-X03	0.245	6.22	0.073	1.85	0.253	6.43	0.237	6.02	0.430	10.92	--
76602-X04	0.290	7.37	0.040	1.02	0.298	7.57	0.282	7.16	0.440	11.18	--
76602-X05	0.310	7.87	0.040	1.02	0.318	8.08	0.302	7.67	0.460	11.68	--
76602-X06	0.330	8.38	0.040	1.02	0.338	8.59	0.322	8.18	0.480	12.19	--
76602-X07	0.335	8.51	0.055	1.40	0.343	8.71	0.327	8.31	0.500	12.70	--
76602-X08	0.310	7.87	0.090	2.29	0.318	8.08	0.302	7.67	0.510	12.95	YES
76602-X09	0.365	9.27	0.042	1.07	0.373	9.47	0.357	9.07	0.517	13.13	--
76602-X10	0.310	7.87	0.120	3.05	0.318	8.08	0.302	7.67	0.540	13.72	YES
76602-X11	0.390	9.91	0.040	1.02	0.398	10.11	0.382	9.70	0.540	13.72	--
76602-X12	0.450	11.43	0.040	1.02	0.458	11.63	0.442	11.23	0.600	15.24	--
76602-X13	0.365	9.27	0.135	3.43	0.373	9.47	0.357	9.07	0.610	15.49	YES
76602-X14	0.468	11.89	0.042	1.07	0.476	12.09	0.460	11.68	0.620	15.75	--
76602-X15	0.658	16.71	0.042	1.07	0.666	16.92	0.650	16.51	0.810	20.57	--
76602-X16	0.720	18.29	0.040	1.02	0.728	18.49	0.712	18.08	0.870	22.10	--
76602-X17	0.275	6.99	0.255	6.48	0.283	7.19	0.267	6.78	0.640	16.26	YES
76602-X18	0.365	9.27	0.055	1.40	0.373	9.47	0.357	9.07	0.530	13.46	--
76602-X19	0.403	10.24	0.315	8.00	0.411	10.44	0.395	10.03	0.828	21.03	YES
76602-X20	0.591	15.01	0.315	8.00	0.599	15.21	0.583	14.81	1.016	25.81	YES
76602-X21	0.275	6.99	0.179	4.55	0.283	7.19	0.267	6.78	0.564	14.33	YES
76602-X22	0.585	14.86	0.240	6.10	0.593	15.06	0.577	14.66	0.940	23.88	YES
76602-X23	0.190	4.83	0.045	1.14	0.198	5.03	0.182	4.62	0.345	8.76	--
76602-X24	0.535	13.59	0.045	1.14	0.543	13.79	0.527	13.39	0.690	17.53	--
76602-X25	0.358	9.09	0.382	9.70	0.366	9.30	0.350	8.89	0.850	21.59	--
76602-X26	0.585	14.86	0.355	9.02	0.593	15.06	0.577	14.66	1.050	26.67	--
76602-X27	0.696	17.68	0.696	17.68	0.704	17.88	0.688	17.48	1.502	38.15	YES
76602-X28	0.140	3.56	0.100	2.54	0.148	3.76	0.132	3.35	0.350	8.89	--
76602-X29	0.715	18.16	0.337	8.56	0.723	18.36	0.707	17.96	1.162	29.51	--
76602-X30	0.485	12.32	0.105	2.67	0.493	12.52	0.477	12.12	0.700	17.78	YES

mat'l. code		surface		tolerance		projection		product family	
SEE NOTE 1		ASME Y14.5		ASME Y14.5				PIN PRODUCTS	
ltr	ecn no	dr	date	tolerances unless otherwise specified				title	
v				angles				BERGPIN® .200"[5.08]cc	
				inches				.041"[1.04] DIA. STAR	
				feet				.110"[2.79] LONG STAR	
				0"±2'				scale 1:1	
		dr	T. BREWBAKER	1996-07-29				dwg no	
		engr	L. FYE	1996-07-29				sheet 3 of 4	
		chr	T. BREWBAKER	1996-07-29				76602	
		appd	L. FYE	1996-07-29				A4	
sheet index	revision	sheet						type CUSTOMER Drawing	



PRODUCT NUMBER NOTE 10	CONTACT AREA		TERM. AREA		DIM H FOR .093/2.36 BOARD		DIM H FOR .125/3.18 BOARD		OVERALL LENGTH		NOTE 4
	DIM A	DIM A	DIM B	DIM B	ENGLISH	METRIC	ENGLISH	METRIC	ENGLISH	METRIC	
76602-X31	0.585	14.86	0.105	2.67	0.593	15.06	0.577	14.66	0.800	20.32	YES
76602-X32	0.258	6.55	0.052	1.32	0.266	6.76	0.250	6.35	0.420	10.67	-
76602-X33	0.360	9.14	0.040	1.02	0.368	9.35	0.352	8.94	0.510	12.95	-
76602-X34	0.430	10.92	0.040	1.02	0.438	11.13	0.422	10.72	0.580	14.73	-
76602-X35	0.470	11.94	0.460	11.68	0.478	12.14	0.462	11.73	1.040	26.42	YES
76602-X36	0.310	7.87	0.270	6.86	0.318	8.08	0.302	7.67	0.690	17.53	YES
76602-X37	0.408	10.36	0.042	1.07	0.416	10.57	0.400	10.16	0.560	14.22	-
76602-X38	0.188	4.78	0.042	1.07	0.196	4.98	0.180	4.57	0.340	8.64	-
76602-X39	0.590	14.99	0.040	1.02	0.598	15.19	0.582	14.78	0.740	18.80	-
76602-X40	0.248	6.30	0.042	1.07	0.256	6.50	0.240	6.10	0.400	10.16	-
76602-X41	0.268	6.81	0.142	3.61	0.276	7.01	0.260	6.60	0.520	13.21	-
76602-X42	0.310	7.87	0.170	4.32	0.318	8.08	0.302	7.67	0.590	14.99	-
76602-X43	0.268	6.81	0.212	5.38	0.278	7.06	0.262	6.65	0.590	14.99	-
76602-X44	0.340	8.64	0.130	3.30	0.348	8.84	0.332	8.43	0.580	14.73	-
76602-X45	0.300	7.62	0.340	8.64	0.308	7.82	0.292	7.42	0.750	19.05	YES
76602-X46	0.300	7.62	0.610	15.49	0.308	7.82	0.292	7.42	1.020	25.91	YES
76602-X47	0.330	8.38	0.370	9.40	0.338	8.59	0.322	8.18	0.810	20.57	YES
76602-X48	0.680	17.27	0.360	9.14	0.688	17.48	0.672	17.07	1.150	29.21	YES
76602-X49	0.560	14.22	0.040	1.02	0.568	14.43	0.552	14.02	0.710	18.03	-
76602-X50	0.690	17.53	0.040	1.02	0.698	17.73	0.682	17.32	0.840	21.34	-
76602-X51	0.567	14.40	0.256	6.50	0.575	14.61	0.559	14.20	0.933	23.70	YES
76602-X52	0.360	9.14	0.310	7.87	0.368	9.35	0.352	8.94	0.780	19.81	-
76602-X53	0.526	13.36	0.526	13.36	0.534	13.56	0.518	13.16	1.162	29.51	-
76602-X54	0.510	12.95	0.075	1.91	0.518	13.16	0.502	12.75	0.695	17.65	-
76602-X55	0.705	17.91	0.040	1.02	0.713	18.11	0.697	17.70	0.855	21.72	-
76602-X56	0.230	5.84	0.235	5.97	0.238	6.05	0.222	5.64	0.575	14.61	-
76602-X57	0.976	24.79	0.292	7.42	0.984	24.99	0.968	24.59	1.378	35.00	-

mat'l. code SEE NOTE 1		surface ASME Y14.5 <input checked="" type="checkbox"/> ASME Y14.5		tolerance tolerances unless otherwise specified		projection 		product family PIN PRODUCTS	
ltr	ecn no	dr	date	angles	inches/mm	INCH/MM		title BERGPIN® .200"[5.08]cc	
v					XX+01/XX+3	scale 1:1		.041"[1.04] DIA. STAR	
					XXX+005/XXX+13			.110"[2.79] LONG STAR	
					XXXX+0020/XXX+051			dwg no	
		dr	T. BREWBAKER	1996-07-29			sheet 4 of 4		size
		enr	L. FYE	1996-07-29			76602		A4
		chr	T. BREWBAKER	1996-07-29			FCI		
		appd	L. FYE	1996-07-29			type		CUSTOMER Drawing
sheet	revision								
index	sheet								