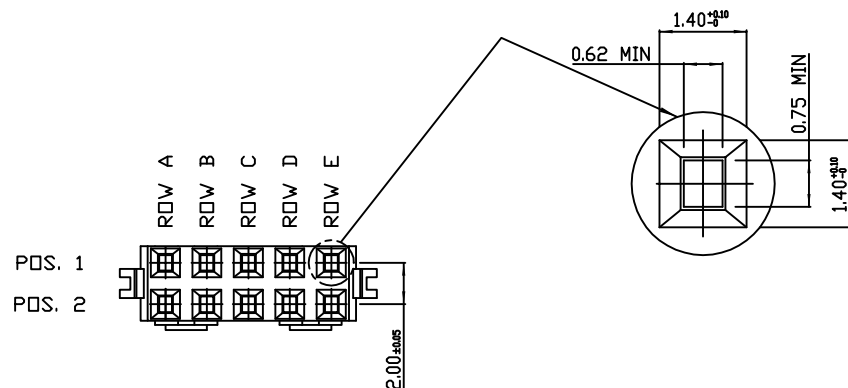


BS,C ,202587,001

B

GEN. ST.	01		02		03		04		05		06		07		08		0D		50		60		70		80		90				
INT. ST.	10	11	12	13	14	18	20	31	32	33	34	38	39	40	42	43	44	45	46	48	56	70	72	73	75	76	81	82	83	84	88

REV.	DATE	DESCRIPTION	BY	C'K'D'
A	20-01-03	CONVERSION REVISION 02	KN	
B	26-07-05	DG05-0244	CLu	



PERFORMANCE CHARACTERISTICS:

VOLTAGE RATING	: 250 VAC.
CURRENT RATING	: 1.0 A AT 70°C
INSULATION RESISTANCE	: 10^3 MΩ MIN. AFTER TEST.
DIELECTRIC WITHSTANDING VOLTAGE	: 1000 V.
CONTACT RESISTANCE	: 20 mΩ MAX. AFTER TEST.
OPERATING T _a	: -55°C TO +125°C.
INSERTION FORCE	: 0.75 N MAX. PER CONTACT.
WITHDRAWAL FORCE	: 0.15 N MIN. PER CONTACT.

MATERIALS:

TERMINAL BLOCK	: GLASS REINFORCED THERMOPLASTIC UL94-V0.
CONTACTS	: PHOSPHOR BRONZE.
PLATING	: Z1 : 0.40 μ Au MIN. OVER Ni IN CONTACT AREA; SnPb(60/40) ON IDC-TERMINAL. N9 : 0.75 μ Au MIN. OVER Ni IN CONTACT AREA; SnPb(60/40) ON IDC-TERMINAL. L9 : 1.25 μ Au MIN. OVER Ni IN CONTACT AREA; SnPb(60/40) ON IDC-TERMINAL.

WIRE CHARACTERISTICS:

INSULATION DIAMETER 1,20 MM MAX.

PART NUMBERS:

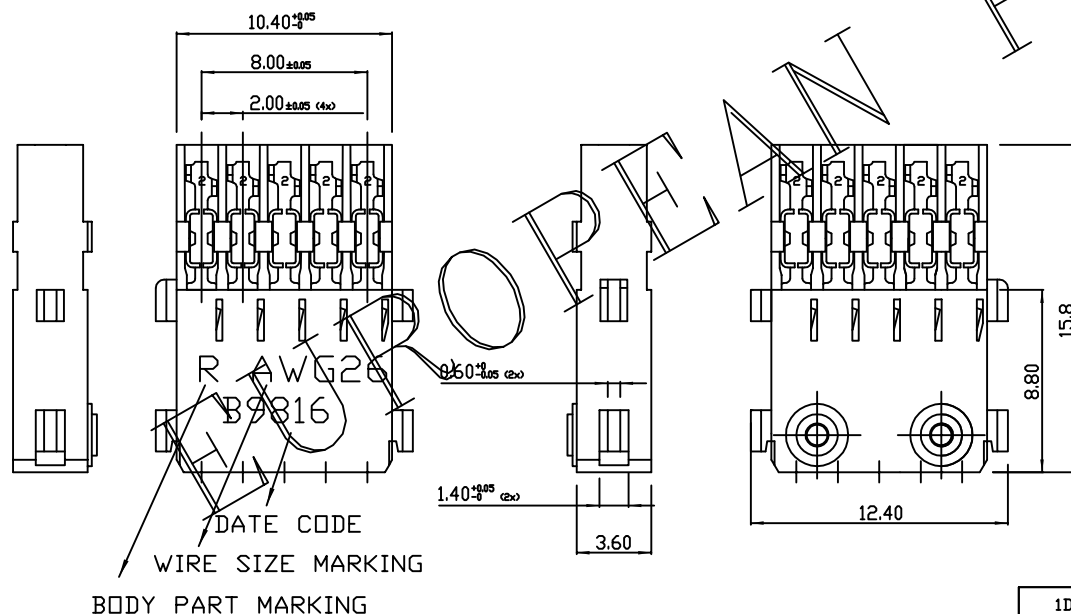
HM2C10D00R10--*	CONNECTOR FOR WIRE SIZE AWG28, AWG30.
HM2C10D20R10--*	CONNECTOR FOR WIRE SIZE AWG26.

MARKING:

PARTNUMBER	WIRE SIZE MARKING
HM2C10D00R10--*	AWG28/30
HM2C10D20R10--*	AWG26

Notes:

1. WHEN PART NUMBER WITH "LF" SUFFIX, THEN THE LF CONTACTS MUST BE USED .
2. THIS PRODUCT WITH "LF" SUFFIX MEETS EUROPEAN UNION DIRECTIVES AND OTHER COUNTRY REGULATIONS AS DESCRIBED IN GS-22-008 .



BODY PART MARKING

RELEASED

1DEC ±0,2 1DEC 2DEC ±0,1 2DEC ANGLES ±1° HOEKEN	APPR. DRAFT CHECKED	DATE 17-12-98	1 IN. N0tto	10 POS. MILLIPACS STACKABLE CC W/D COVER (RIGHT)
WE RESERVE THE RIGHT TO CHANGE DIMENSIONS OR REQUIREMENTS WITHOUT PRIOR NOTICE.	PROD. MGR. PR.ENG.MGR. PR.MGT.MGR.			AT. N. HM2C10D-0R10--*
ALL DIMENSIONS IN MM	REFEREN E / REFERENTE			SCALE
ALLE AFMETINGEN IN MM				FCI
				FCI MECHELEN N.V. A SPINDYSTRAT 8, 2800 MECHELEN
				BS,C ,202587,001
				B
				STATUS: Released
				Printed: Aug 01, 2010

THIS IS OUR EXCLUSIVE PROPERTY. IT IS NOT TO BE COPIED, REPRINTED
OR DISCLOSED TO A THIRD PARTY, NOR USED FOR MANUFACTURING WITHOUT
OUR WRITTEN CONSENT, AND HAS TO BE RETURNED TO US IN CASE OF NO USAGE.

DIT IS ONZE EIGENDOM EN MAG NIET NAGENAKT, HERDRUKT, OVERGEDRAKT AAN
DERDEN, NIET VOOR FABRICATIE GEBRUIKT WORDEN, ZONDER ONZE SCHRIFTELIJKE
TOELATING. BIJ NIET GEBRUIK IS TERUGGEGING VERPLICHT.

ALLE AFMETINGEN IN MM

PDM: Rev:B

CUSTOMER DRAWING REVISION