

BS.C ,201632,008

C

GEN. ST.

01

02

03

04

05

06

07

08

0D

50

60

70

80

90

INT. ST.

10

11

12

13

14

18

20

31

32

33

34

38

39

40

42

43

44

45

46

48

56

60

70

72

73

75

76

81

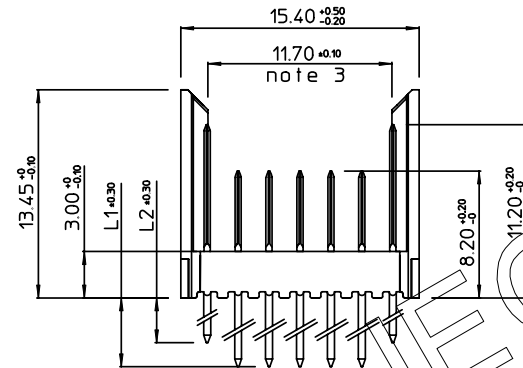
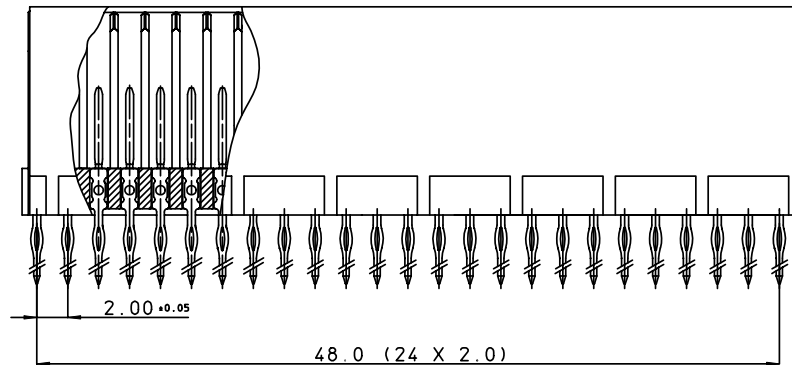
82

83

84

88

| REV. | DATE | DESCRIPTION | BY | C'K'D' |
|------|------------|------------------------|--------|--------|
| A | 2001-09-14 | CONVERSION REVISION 07 | KN | |
| B | 2005-11-23 | 105-0251 | ALEX B | BKP |
| C | 2006-07-04 | 106-0096 | VIVEK | BKP |
| 07 | 2001-05-31 | BEC 9.3525 | R.M. | |



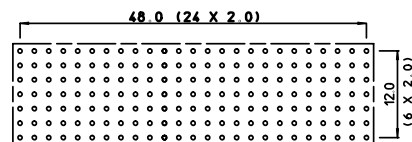
PERFORMANCE CHARACTERISTICS

CURRENT RATING : 1.5 A AT 20°C (FULLY LOADED)
1 A AT 70°C (FULLY LOADED)
RATED VOLTAGE : 500 V AC (CONT / CONT)
OPERATING TEMPERATURE : -55°C TO 125°C
CONTACT RESISTANCE : 20 mΩ MAX
INSERTION FORCE : 0.75 N MAX / CONT
EXTRACTION FORCE : 0.15 N MIN / CONT
INSULATION RESISTANCE : 10⁴ MΩ MIN

| CAT. NR. | L1±0.3 | L2±0.3 | DESCRIPTION |
|------------------|--------|--------|-----------------------|
| HM2P08PD5111---- | 3.7 | 3.7 | SHORT PRESS-FIT |
| HM2P08PC5111---- | 4.5 | 4.5 | SHORT PRESS-FIT |
| HM2P08PK5111---- | 13 | 4.5 | REAR PLUG-UP: LEVEL 1 |
| HM2P08PM5111---- | 14.5 | 4.5 | REAR PLUG-UP: LEVEL 2 |
| HM2P08PN5111---- | 16 | 4.5 | REAR PLUG-UP: LEVEL 3 |
| HM2P08PT5111---- | 13 | 4.5 | WIRE WRAP |

NOTES

- *HM2P08P#5111---*
PERFORMANCE LEVEL INDICATOR
(REFER DWG No. BS.C ,201844,003)
LEAD FREE INDICATOR : LF=LEAD FREE
(DIGIT 15&16)
- THIS PRODUCT IS CSA APPROVED.
THIS PRODUCT IS UL RECOGNIZED.
- MEASURED AT THE BOTTOM.
- FOR RECOMMENDED PTH DIMENSIONS REFER DRAWING : BS.A ,201572,001
- THE PRODUCT (LF) MEETS EUROPEAN UNION DIRECTIVES AND OTHER COUNTRY REGULATIONS AS DESCRIBED IN GS-22-008

LAY-OUT
P.C.B. - HOLE

THIS IS OUR EXCLUSIVE PROPERTY. IT IS NOT TO BE COPIED, REPRINTED
OR DISCLOSED TO A THIRD PARTY, NOR USED FOR MANUFACTURING WITHOUT
OUR WRITTEN CONSENT, AND HAS TO BE RETURNED TO US IN CASE OF NO USAGE

DIT IS ONZE EIGENDOM EN MAG NOCH NAGEHAAKT, HERDRUKT, OVERGEHAAKT AAN
DERDEN, NOCH VOOR FABRIKATIE GEBRUIKT WORDEN, ZONDER ONZE SCHRIFTELIJKE
TOELATING. BIJ NIET GEBRUIK IS TERUGZENDING VERPLICHT.

MALE SIGNAL STRAIGHT PRESS-FIT-TO-BOARD CONNECTOR

WITHOUT SERVICECENTER (WIDE BODY)

| | | | | |
|---|---|--------------------------------|-------------------|--|
| 1DEC ±0.2 2DEC ±0.1 ANGLES ±1° | APPR. DRAFT CHECKED PROD. MGR. PR. ENG. MGR. PR. MGT. MGR. | DATE 1994-05-17 W. Panis | SIGN. W. Panis | MILLIPACS 2 / TYPE B / SHIELDED CAT. No. HM2P08P#5111---- |
| WE RESERVE THE RIGHT TO CHANGE DIMENSIONS OR REQUIREMENTS WITHOUT PRIOR NOTICE. | | | | SCALE 3 / 1 |
| ALL DIMENSIONS IN MM | REFERENCES | | | BS.C ,201632,008 DRAWING No. CUSTOMER DRAWING |

BS.C ,201632,008

C

DRAWING No. CUSTOMER DRAWING REVISION

PDM: Rev:C

STATUS: Released

Printed: Dec 01, 2007

| | | | | | | | | | | | | | | | | | | | | | | | | | | | | | | | | |
|----------|--|----|----|----|----|----|----|----|----|----|----|----|----|----|----|----|----|----|----|----|----|----|----|----|----|----|----|----|----|----|----|----|
| GEN. ST. | | 01 | | 02 | | 03 | | 04 | | 05 | | 06 | | 07 | | 08 | | 0D | | 50 | | 60 | | 70 | | 80 | | 90 | | | | |
| INT. ST. | | 10 | 11 | 12 | 13 | 14 | 18 | 20 | 31 | 32 | 33 | 34 | 38 | 39 | 40 | 42 | 43 | 44 | 45 | 46 | 48 | 56 | 70 | 72 | 73 | 75 | 76 | 81 | 82 | 83 | 84 | 88 |

| REV. | DATE | DESCRIPTION | BY | C'K'D' |
|------|------------|-------------|--------|--------|
| D | 2005-06-01 | 105-0083 | ALEX B | BKP |
| E | 2006-08-03 | 106-0119 | ALEX B | BKP |
| F | 2007-04-11 | 107-0049 | ALEX B | BKP |
| G | 2007-05-17 | 107-0058 | ALEX B | BKP |

MILLIPACS : CONTACT PLATING CODE OVERVIEW

HM2---P------(L-)(LF)

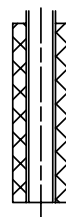
FOR LEAD FREE PLATING
OPTIONAL (NOTE 1)

PLATING CODE (DIGIT 13 AND 14)

| PLATING CODE | DESCRIPTION | PERFORMANCE |
|--------------|---|---|
| L9 | MALE CONN.: SHORT / WIRE WRAP CONT. FEMALE CONNECTOR | TELCORDIA UE |
| E9 | MALE CONN.: SHORT / WIRE WRAP CONT. FEMALE CONNECTOR | PERFORMANCE LEVEL 1 (500 mating cycles) |
| N9 | MALE CONN.: SHORT / WIRE WRAP CONT. FEMALE CONNECTOR | PERFORMANCE LEVEL 2 (250 mating cycles)/ TELCORDIA CO |
| Z1 | MALE CONN.: SHORT / WIRE WRAP CONT. FEMALE CONNECTOR | PERFORMANCE LEVEL 3 (50 mating cycles) |
| GE | MALE CONN.: REAR PLUG-UP CONTACTS | TELCORDIA UE |
| GL | MALE CONN.: REAR PLUG-UP CONTACTS | PERFORMANCE LEVEL 1 (500 mating cycles) |
| GF | MALE CONN.: REAR PLUG-UP CONTACTS | PERFORMANCE LEVEL 2 (250 mating cycles)/ TELCORDIA CO |
| GC | MALE CONN.: REAR PLUG-UP CONTACTS | PERFORMANCE LEVEL 3 (50 mating cycles) |

NOTE :

- IN CASE OF STR HDR CONNECTORS :
EXTENSIONS CAN BE ADDED TO THE PLATING CODE
IF LUBRICATED CONTACTS ARE REQUIRED
L : LUBRICATED
L1: LUBRICATED TO MEET TELCORDIA GR-1217 CORE REQUIREMENTS
- PLATING AT EON AREA
LF : Sn MATT FINISH PLATING
ALL OTHER PART NOS : SnPb PLATING
- FOR PRODUCT SPEC. REFER GS-12-203

REF NOTE 2 FOR
EON PLATING

| | | | | | |
|---|--|--------------------|-----------------|--------------------------------|-------|
| 1DEC $\pm 0,2$ 2DEC $\pm 0,1$ ANGLES $\pm 1^\circ$ | APPR. DRAFT CHECKED | DATE 2003-03-21 | SIGN. M.Fret | MPACS CONTACT PLATING OVERVIEW | |
| WE RESERVE THE RIGHT TO CHANGE DIMENSIONS OR REQUIREMENTS WITHOUT PRIOR NOTICE. | PROD. MGR. PR. ENG. MGR. PR. MGT. MGR. | | | CAT. No. HM2---P------(L-) | SCALE |
| ALL DIMENSIONS IN MM | REFERENCES | | | FCI www.fciconnect.com | |
| | | | | BS,C ,201844,003 G | |

