

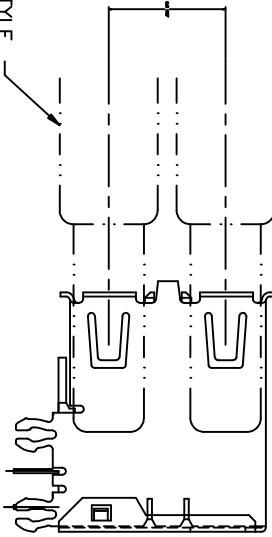


form no. 7530-001-103

1 | 2

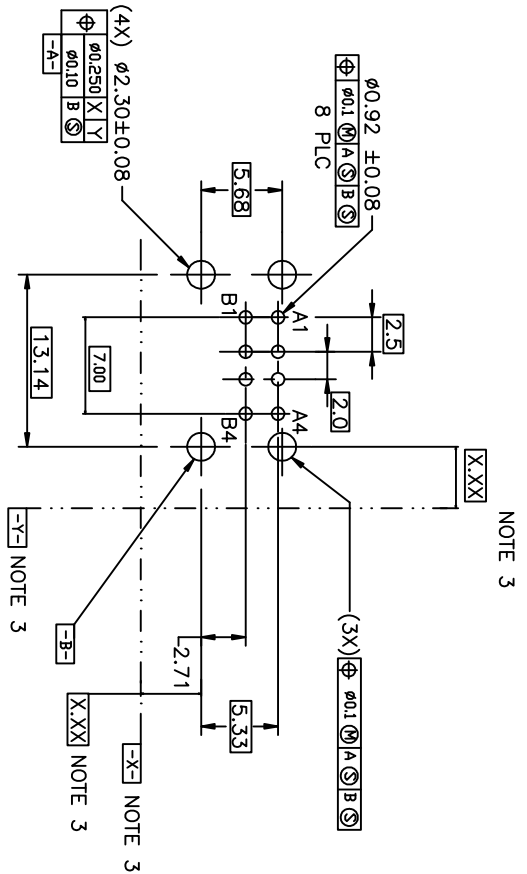
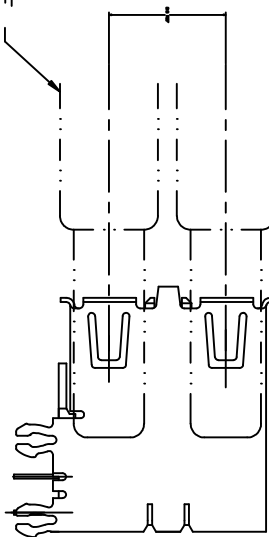
USB A CABLE STYLE
CONNECTOR

WITH BACK SHELL



USB A CABLE STYLE
CONNECTOR

WITHOUT BACK SHELL



RECOMMENDED PC DIMENSIONS

NOTES:
1. MATERIAL:

CONTACTS-COPPER ALLOY
SHELL-COPPER ALLOY
HOUSING-UL 94-V-0 RATED THERMOPLASTIC.

2. PLATING:

CONTACTS-0.76um MINIMUM GLOD FLASH OVER PALLADIUM
NICKEL IN CONTACT AREA OR 0.76um MIN GOLD FLASH
3.8um MINIMUM TIN-LEAD ON SOLDER TAILS
ALL OVER 1.27um MINIMUM NICKEL.
SHELL, 5um MINIMUM BRIGHT TIN
OVER 2.5um MINIMUM NICKEL.

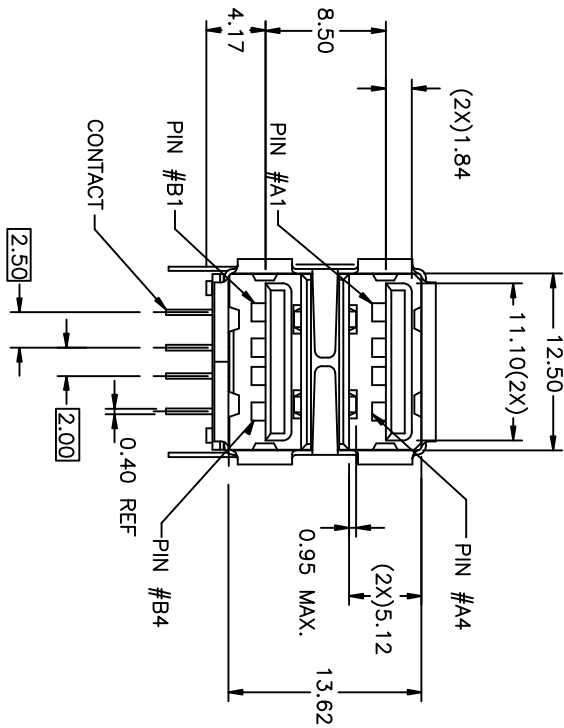
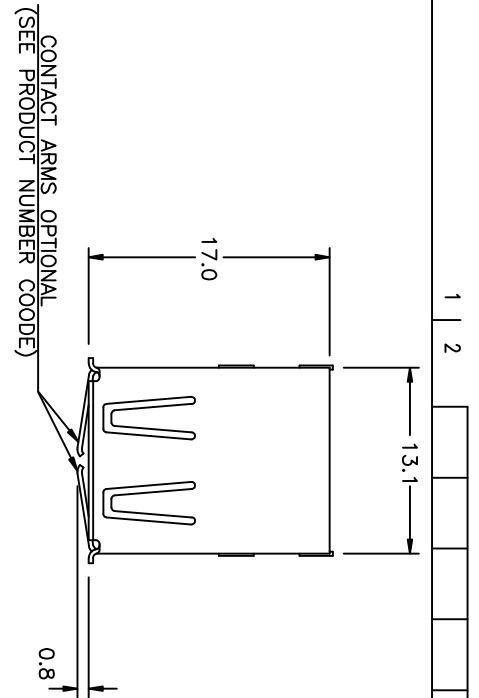
③ DATUM AND BASIC DIMENSIONS ESTABLISHED BY CUSTOMER.

4. RECOMMENDED PC BOARD THICKNESS OF 1.57mm.

5. P/N SEE PRODUCT NUMBER CODE.
(TO BE CONTINUED)

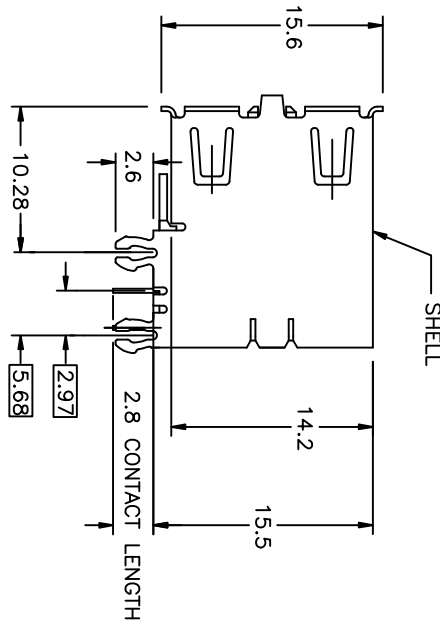
mat'l. code		NOTE 1 & 2		tolerances unless otherwise specified		CUSTOMER COPY		FCI		www.fciconnect.com	
ltr	ecn no	dr	date	linear	projection	scale	size	dwg no	family	code	sheet
AC	N05-0086	PH	03/09/05	linear	XX ±.20						
AD	N05-0106	PH	04/13/05	linear	XXX ±.10						
AE	N06-0101	HB	04/13/06	angles	0° ±.3°						
AF	N06-0133	HB	05/17/06	dr	PETER	12/10/97					
AA	T04-0206	WL	05/13/04	cht	R Y LUU	12/10/97					
AB	N04-0086	PH	11/09/04	qppd	JENN TSKO	12/10/97					
sheet	revision	Y	AA	Y	AE						
index	sheet	1	2	3	4						

code code
22526



ASSEMBLY WITHOUT BACK SHIELD
72309-XX3XX SHOWN

- (CONTINUED)
6. FOR LEAD FREE P/N, A LEAD FREE LABEL WILL APPEAR AT PACKING.
 7. FOR LEAD FREE P/N, THE HOUSING WILL WITHSTAND EXPOSURE TO 260°C PEAK TEMPERATURE FOR 40 SECONDS IN A CONVECTION, INFRARED OR VAPOR PHASE REFLUX OVEN.
 8. FOR LEAD FREE P/N, THE PRODUCT MEET EUROPEAN UNION DIRECTIVES AND OTHER COUNTRY REGULATION AS DESCRIBED IN GS-22-008



mat'l. code			tolerances unless otherwise specified			CUSTOMER COPY			FCJ		
ltr	ecr	no	dr	date	linear	projection	title	www.fcjconnect.com	UNIV. SERIAL BUS	DOUBLE DECK RECEPTACLE	code
AA					.XX ±.20						
					.XXX ±.10						
					0 ±.5						
					PETER PM	12/10/97					
					engr	R Y LU	12/10/97				
					chr	R Y LU	12/10/97				
					appr	JENN TSAO	12/10/97				
sheet	revision										
index	sheet										



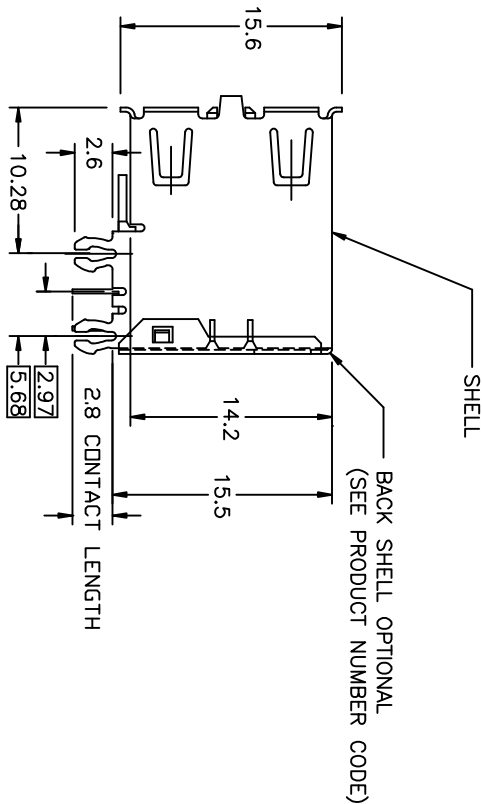
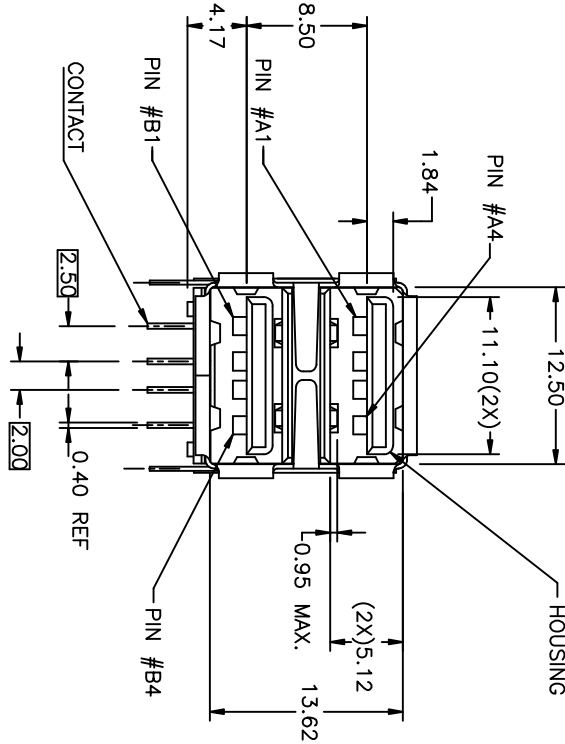
B

A

form no. 7530-001-103

1 | 2

ASSEMBLY WITH BACK SHIELD
72309 - XX4XX SHOWN



1 | 2

3 |

4

mat'l. code			tolerances unless otherwise specified			CUSTOMER		FCI	
ltr	ecn no	dr	date	linear	angles	projection	copy	title	www.fci.com
Y				.XX ±.20	0° ±.5°	⌀		UNIV. SERIAL BUS	
				.XXX ±.10		⌀		DOUBLE DECK RECEPTACLE	
				PETER PM	12/01/97	mm		product family	USB
				engr	R Y LUU	12/10/97		size dwg no	
				chr	R Y LUU	12/10/97		code	
				appd	JENN TSAO	12/10/97		code	
sheet		revision							
index		sheet							

3 |

4

code code
22526



PRODUCT NUMBER CODE

72309 -

X

X

X

X

X

P

S

LF

BASE PRODUCT NUMBER

HOUSING COLOR + SHELL PLATING OPTIONS

- 0 - WHITE + NICKEL & TIN LEAD PLATING
- 1 - BLACK + NICKEL & TIN LEAD PLATING
- 2 - WHITE + NICKEL PLATING ONLY
- 3 - BLACK + NICKEL PLATING ONLY
- 4 - WHITE + NICKEL PLATING ONLY + LCP HSG
- 5 - BLACK + NICKEL PLATING ONLY + LCP HSG
- 6 - BLACK + NICKEL & TIN LEAD PLATING + LCP HSG
- 7 - BLACK + NICKEL & BRIGHT TIN PLATING
- 8 - WHITE + NICKEL & BRIGHT TIN PLATING
- 9 - BLACK + NICKEL & BRIGHT TIN PLATING + LCP HSG

SHELL PLATING OPTION

- 0 - BARREL-PLATING
- 1 - PRE-PLATING

SHELL OPTIONS

- 1 - NO BACK SHIELD, NO ARMS, FRONT GROUNDING ARMS
- 2 - BACK SHIELD, NO FRONT GROUNDING ARMS
- 3 - NO BACK SHIELD, FRONT GROUNDING ARMS
- 4 - BACK SHIELD, FRONT GROUNDING ARMS

TERMINAL PLATING OPTION

- 0 - 50u" NI UNDERPLATE
30u" GXT CONTACT AREA
100u" TIN/LEAD TAIL AREA
- 2 - 50u" NI UNDERPLATE
30u" GOLD CONTACT AREA
100u" TIN/LEAD TAIL AREA
- 3 - 50u" NI UNDERPLATE
30u" GOLD CONTACT AREA
100u" MATTE TIN TAIL AREA
- 4 - 50u" NI UNDERPLATE
30u" GXT CONTACT AREA
100u" MATTE TIN TAIL AREA

PACKAGING OPTIONS

- B - TUBES
- R - TAPE & REEL

WITH DATE CODE

ONLY FOR PANASONIC

LEAD FREE MARK

LEAD FREE CONVERSION RULES -

HOUSING COLOR AND SHELL PLATING OPTION: 0 TO 8, 1 TO 7, 6 TO 9
TERMINAL PLATING OPTION: 0 TO 4, 2 TO 3

NOTE:

AVAILABLE P/N'S IN FCI NOW FOLLOWED:

72309-0010X/8014XLF	72309-2010X/2014XLF
72309-0012X/8013XLF	72309-2012X/2013XLF
72309-0020X/8024XLF	72309-2020X/2024XLF
72309-0022X/8023XLF	72309-2022X/2023XLF
72309-0030X/8034XLF	72309-2030X/2034XLF
72309-0032X/8033XLF	72309-2032X/2033XLF
72309-0040X/8044XLF	72309-2040X/2044XLF
72309-0042X/8043XLF	72309-2042X/2043XLF
72309-1010X/7014XLF	72309-3010X/3014XLF
72309-1012X/7013XLF	72309-3012X/3013XLF
72309-1020X/7024XLF	72309-3020X/3024XLF
72309-1022X/7023XLF	72309-3022X/3023XLF
72309-1030X/7034XLF	72309-3030X/3034XLF
72309-1032X/7033XLF	72309-3032X/3033XLF
72309-1040X/7044XLF	72309-3040X/3044XLF
72309-1042X/7043XLF	72309-3042X/3043XLF
72309-0110X/8114XLF	72309-4010X/4014XLF
72309-0112X/8113XLF	72309-4012X/4013XLF
72309-0120X/8124XLF	72309-5010X/5014XLF
72309-0122X/8123XLF	72309-5012X/5013XLF
72309-0130X/8134XLF	72309-5030X/5034XLF
72309-0132X/8133XLF	72309-5032X/5033XLF
72309-0140X/8144XLF	72309-5040X/5044XLF
72309-0142X/8143XLF	72309-5042X/5043XLF
72309-1110X/7114XLF	72309-6010X/6014XLF
72309-1112X/7113XLF	72309-6012X/6013XLF
72309-1120X/7124XLF	72309-6020X/6024XLF
72309-1122X/7123XLF	
72309-1130X/7134XLF	
72309-1132X/7133XLF	
72309-1140X/7144XLF	
72309-1142X/7143XLF	

mat'l. code	NOTE 1 & 2	dr	date	tolerances unless otherwise specified	CUSTOMER COPY	FCI	www.fciconnect.com
AE				linear			
				angles			
				dr			
				engr			
				chr			
				oppl			

projection	title	UNIV. SERIAL BUS	DOUBLE DECK RECEPTACLE	code
mm	size	dwg no	USB	
2:1	A4	72309		
sheet	revision			sheet
index	sheet			4 of