

Tous droits strictement reserves. Reproduction ou communication a des tiers interdite sous quelque forme que ce soit sans autorisation ecrite du proprietaire. Propriete de c FCI. Droits de reproduction FCI.

**FCI**

All rights strictly reserved. Reproduction or issue to third parties in any form whatever is not permitted without written authority from the proprietor. Property of FCI. Copyright FCI.

1 | 2

3 |

4

PRODUCT NUMBER  
5 4 2 0 2 - X X X - X X - X X X

PLATING

S=15μ"[0.38μm]GOLD ON CONTACT AREA  
120μ"[3.0μm]TIN/LEAD ON TAIL  
G=30μ"[0.76μm]GOLD ON CONTACT AREA  
120μ"[3.0μm]TIN/LEAD ON TAIL  
T=120μ"[3.0μm]TIN/LEAD ON CONTACT AREA AND ON TAIL(SEE NOTE 8)  
F=2μ"[0.05μm]GOLD ON CONTACT AREA AND ON TAIL

POLARIZATION NOTE 6

PACKAGING TYPE, NOTE 5

POSITIONS PER ROW 02 TO 20

LEAD STYLE	POST
08	0.230/5.84
30	0.318/8.08

PRODUCT NUMBER  
5 4 2 0 2 - X X X - X X - X X X LF

PLATING

S=15μ"[0.38μm]GOLD ON CONTACT AREA  
100μ"[2.5μm]TIN ON TAIL  
G=30μ"[0.76μm]GOLD ON CONTACT AREA  
100μ"[2.5μm]TIN ON TAIL  
T=100μ"[2.5μm]TIN ON CONTACT AREA AND ON TAIL(SEE NOTE 10)  
F=2μ"[0.05μm]GOLD ON CONTACT AREA AND ON TAIL

POLARIZATION NOTE 6

PACKAGING TYPE, NOTE 5

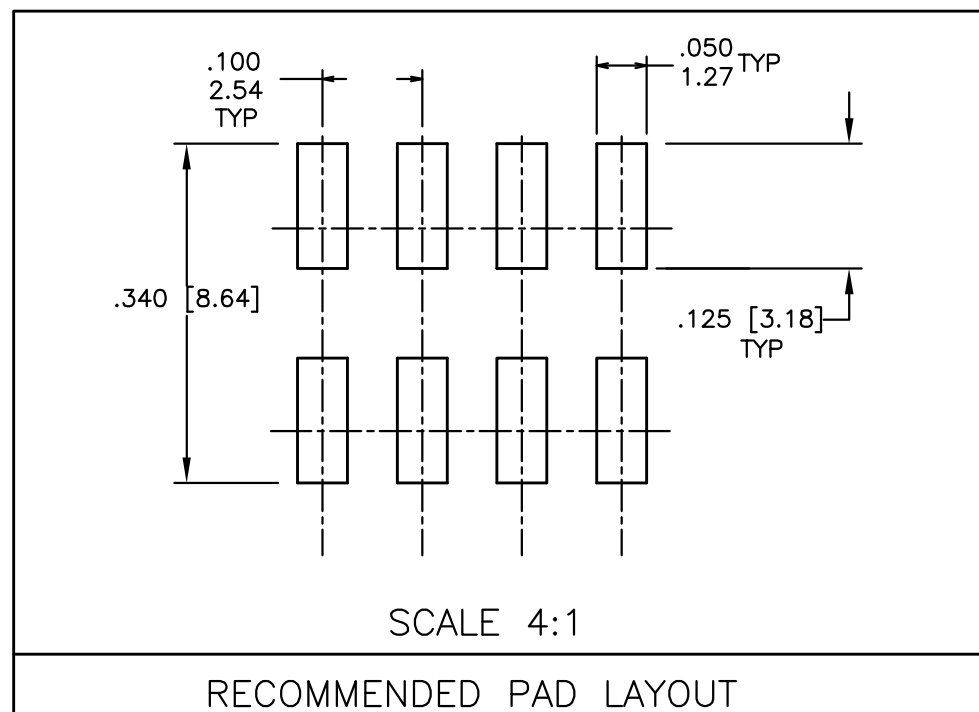
POSITIONS PER ROW 02 TO 20

LEAD FREE OPTION NOTE 9

LEAD STYLE	POST
08	0.230/5.84
30	0.318/8.08

NOTES:

- HOUSING MAT'L: HIGH TEMPERATURE THERMOPLASTIC. FLAME RETARDANT PER UL 94V-0  
COLOR: BLACK  
THESE PART NUMBERS WILL WITHSTAND EXPOSURE TO 260 C PEAK TEMPERATURE FOR 20 SECONDS IN WAVE SOLDER, INFRA-RED OR VAPOR PHASE SOLDER PROCESS.
- PIN MATERIAL: PHOSPHOR-BRONZE
- TO DETERMINE DIMENSIONS:  
N = NUMBER OF POSITIONS ROW.  
EXAMPLE: 10 POS., N x .100/2.54=1.00/25.4
- 2LBS/0.9KG MIN. PIN RETENTION IN EITHER DIRECTION.
- PACKAGING: \_ =POLY BAGS WITHOUT PICKUP CAP.  
T =TUBES (OMIT DASH IF NOT POLARIZED).  
P =TUBES WITH PICKUP CAPS.  
A =TAPE AND REEL WITH PICKUP CAPS.
- FOR POLARIZATION, SPECIFY POSITION NUMBER (i.e. A03=ROW A POS. 3) TO OMIT PIN.  
OMIT FROM PRODUCT NUMBER IF THIS FEATURE IS NOT APPLICABLE.  
PRODUCT MANAGEMENT APPROVAL REQUIRED PRIOR TO RELEASE OR SALE OF POLARIZED PRODUCTS.
- UNDERPLATING: 50μ"/1.2μm Ni.
- PIN TIPS ON TIN/LEAD PLATED PRODUCT MAY HAVE BARE METAL ON TWO SIDES, BOTH ENDS.
- ADD LF TO END OF PART NUMBER FOR LEAD FREE OPTION.
- THESE PRODUCTS MEETS EUROPEAN UNION DIRECTIVES AND OTHER COUNTRY REGULATION AS DESCRIBED IN GS-22-008.
- "THIS PRODUCT HAS 100% PURE TIN PLATING IN THE INTERFACE AND HAS NOT BEEN TESTED FOR WHISKER GROWTH IN ALL INTERCONNECT ENVIRONMENTS."



mat'l. code SEE NOTES 1 & 2				tolerances unless otherwise specified		CUSTOMER COPY	FCI www.fciconnect.com	
ltr	ecn no	dr	date	linear	.XX ±.01/0.3		projection INCH/MM	title .100 UNSHROUDED HDR. DUAL ROW VERT. SMT.
E	V20049	GIP	3/13/02		.XXX ±.005/0.13	scale 1:1		product family
F	V20620	GIP	3/27/02	angles	.XXXX ±.0020/0.051			size
G	V20751	GIP	7/9/02	dr	0° ±2°		A	54202
H	V21475	GIP	9/17/02	enr	D.INGRAM 05/17/99			code 213
J	V03-0068	HTB	1/17/03	chr	H.SUNDY 07/21/99			sheet 1 of 3
K	V03-0473	HTB	4/25/03	appd	H.SUNDY 07/21/99			
L	V05-0222	LP	3/14/05					
sheet index	revision sheet	L	L	L				
		1	2	3				

cage code  
22526

1 | 2

3 |

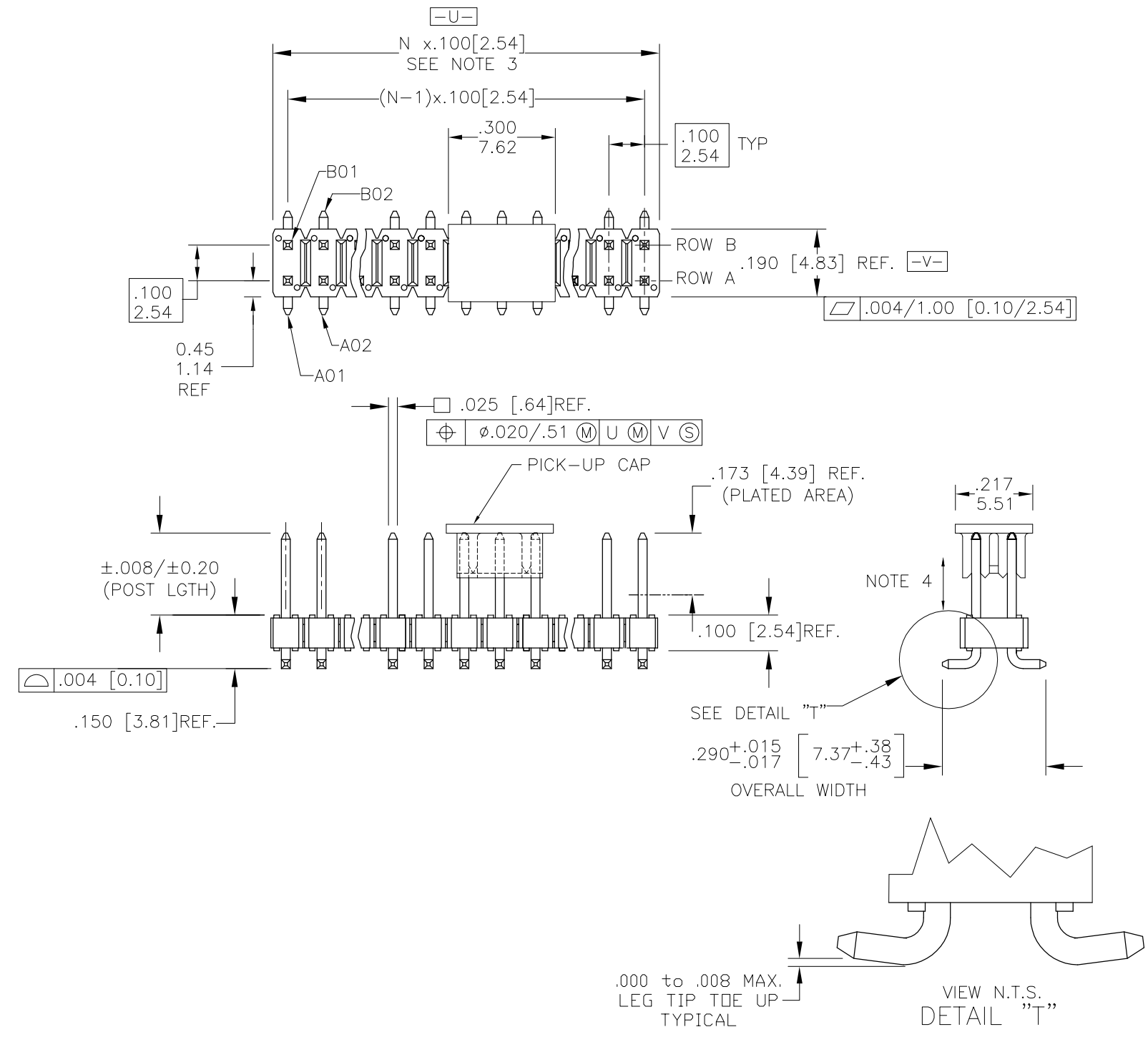
4

ACAD

Tous droits strictement reserves. Reproduction ou communication a des tiers interdite sous quelque forme que ce soit sans autorisation ecrite du proprietaire. Propriete de c FCI. Droits de reproduction FCI.

All rights strictly reserved. Reproduction or issue to third parties in any form whatever is not permitted without written authority from the proprietor. Property of FCI. Copyright FCI.

PRODUCT NUMBER  
SEE TABLE



mat'l. code SEE NOTES 1 & 2				tolerances unless otherwise specified		CUSTOMER COPY		 www.fciconnect.com			
ltr	ecn no	dr	date	linear	.XX ±.01/0.3	projection		title			
L					.XXX ±.005/0.13			.100 UNSHROUDED HDR. DUAL ROW VERT. SMT.		product family	code
					.XXXX ±.0020/0.051			BERGSTIK	213		
				angles	0° ±2°	INCH/MM		product family	code		
				dr	D.INGRAM 05/17/99			size	dwg no	54202	213
				enr	H.SUNDY 07/21/99	scale	1:1	A			
				chr	H.SUNDY 07/21/99			54202		sheet	2 of
				appd	H.SUNDY 07/21/99						
sheet index	revision sheet										

cage code  
22526

ACAD

### TAPE AND REEL PACKAGING

SIZE	LEAD STYLE 08 POST (0.230 [5.84])	LEAD STYLE 30 POST (0.318 [8.08])
2X2	YES	
2X3	YES	
2X4	YES	YES
2X5	YES	
2X6	YES	
2X7	YES	YES
2X8	YES	
2X9		
2X10	YES	
2X11	YES	
2X12		YES
2X13	YES	
2X14		
2X15	YES	
2X16		YES
2X17	YES	
2X18		
2X19		
2X20		

Tous droits strictement reserves. Reproduction ou communication a des tiers interdite sous quelque forme que ce soit sans autorisation ecrite du proprietaire. Propriete de c FCI. Droits de reproduction FCI.



All rights strictly reserved. Reproduction or issue to third parties in any form whatever is not permitted without written authority from the proprietor. Property of FCI. Copyright FCI.

mat'l. code				tolerances unless otherwise specified			CUSTOMER COPY		 www.fciconnect.com	
ltr	ecn no	dr	date	linear	.XX ±.01/0.3		projection	 title .100 UNSHROUDED HDR. DUAL ROW, VERT. SMT.		
L					.XXX ±.005/0.13					
					.XXXX ±.0020/0.051					
				angles	0° ±2°		 INCH/MM	product family BERGSTIK		code
				dr	L.POTTEIGER	3/14/05		size dwg no		213
				enr	H.SUNDY	3/14/05	scale	A		sheet
				chr	H.SUNDY	3/14/05		1:1		3 of
				appd	H.SUNDY	3/14/05				
sheet index	revision sheet									

cage code  
22526

ACAD