

A

B

C

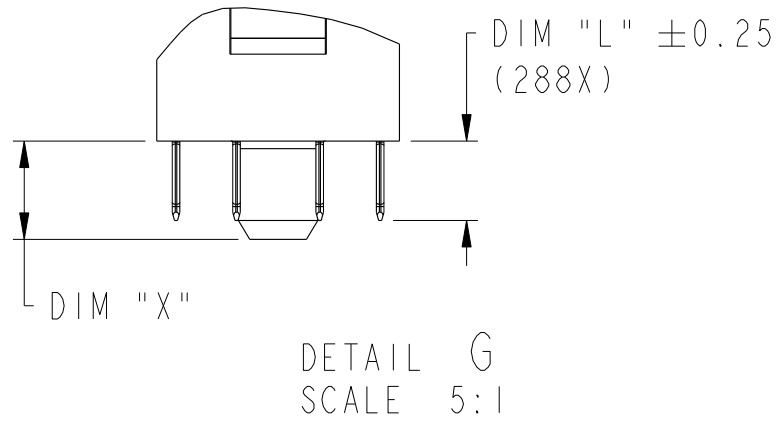
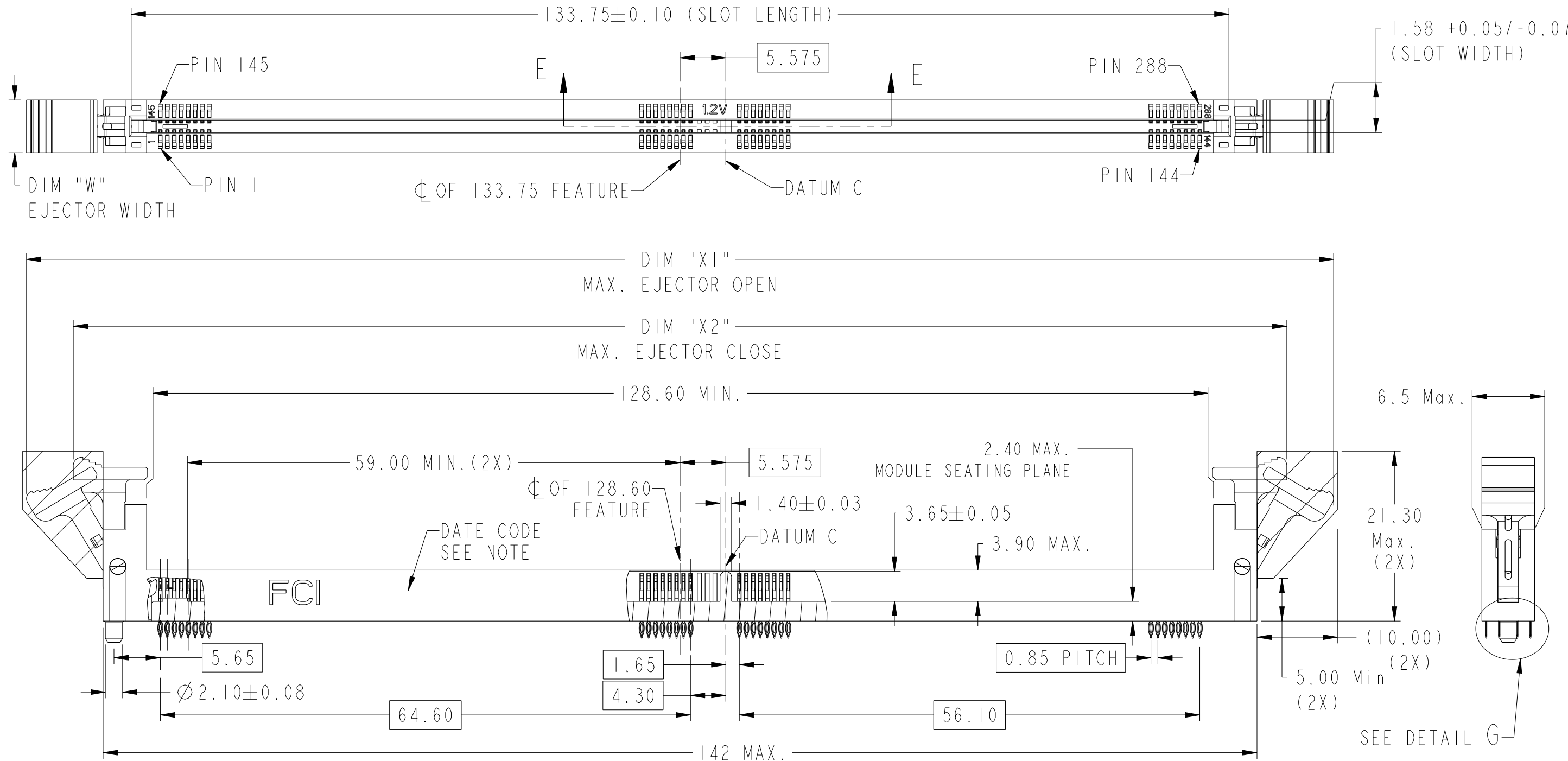
D

A

B

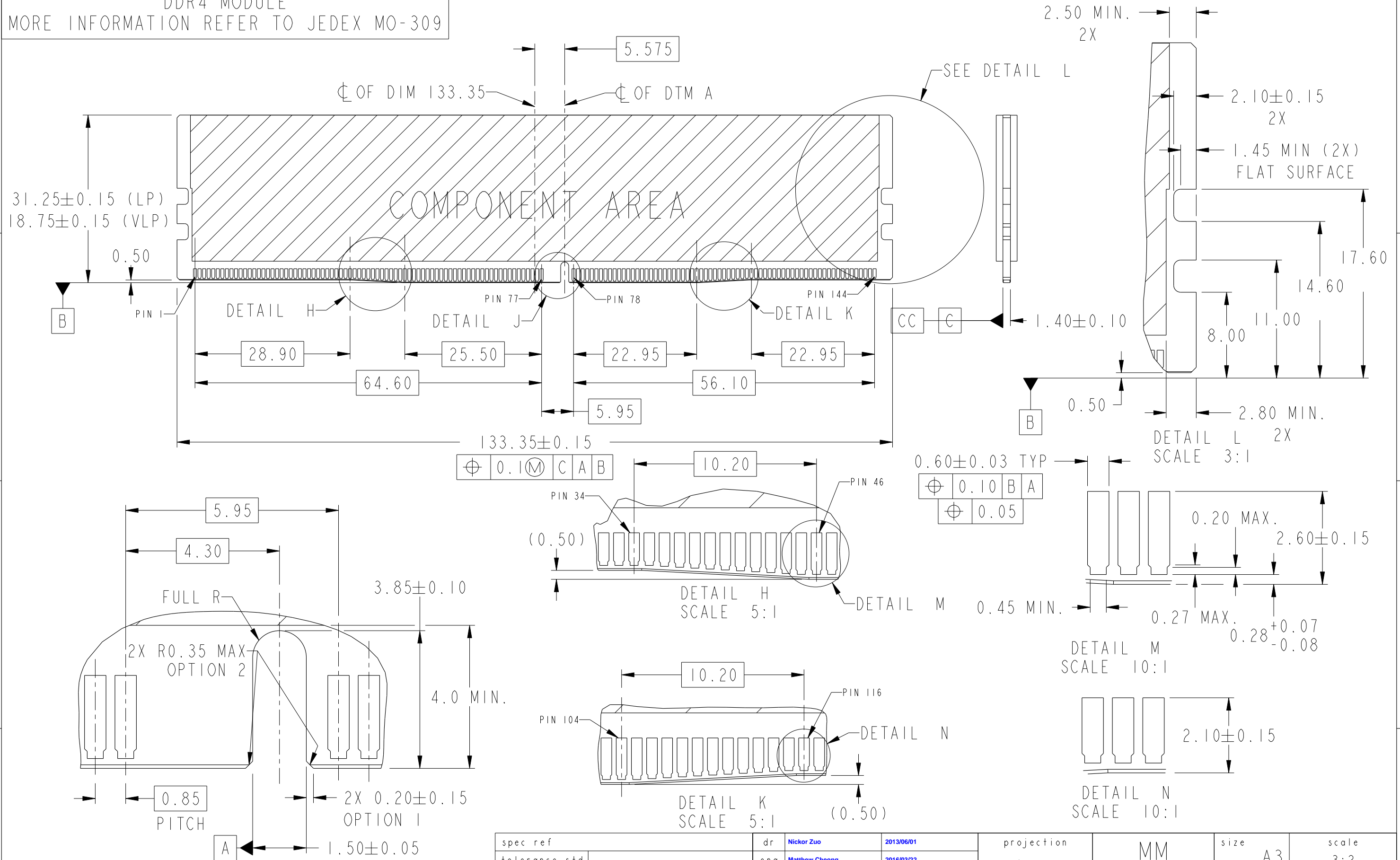
C

D



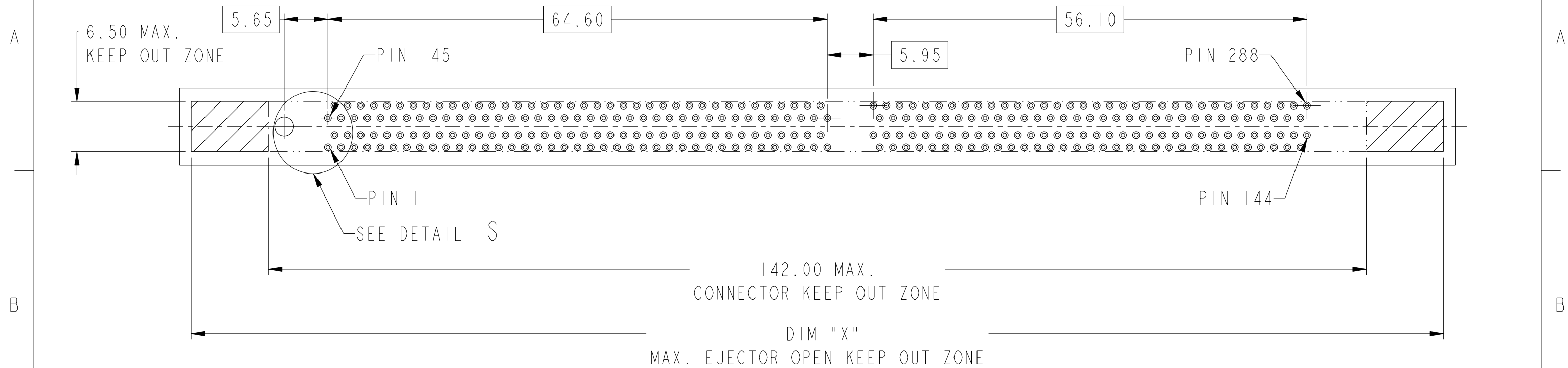
spec ref				dr		Nickor Zuo	2013/06/01		projection		MM		size		A3	scale		2:1		
tolerance std		TOLERANCES UNLESS OTHERWISE SPECIFIED				eng		Matthew Cheong	2016/03/22						ecn no				ELX-S-23544-1	
chr						-		-												
appr						Chen-Hong Tan		2016/04/18		product family					-		rel level		Released	
surface 		linear		0.X		±0.30		Amphenol FCi		title		DDR4 288Pin DIMM CONNECTOR		dwg no		10124806		rev		D
				0.XX		±0.20														
				0.XXX		±0.10														
ISO 1302		angular		0°		±2°		www.fci.com		cat. no.		-		Product - Customer Drw				sheet 1 of 4		

DDR4 MODULE  
MORE INFORMATION REFER TO JEDEX MO-309

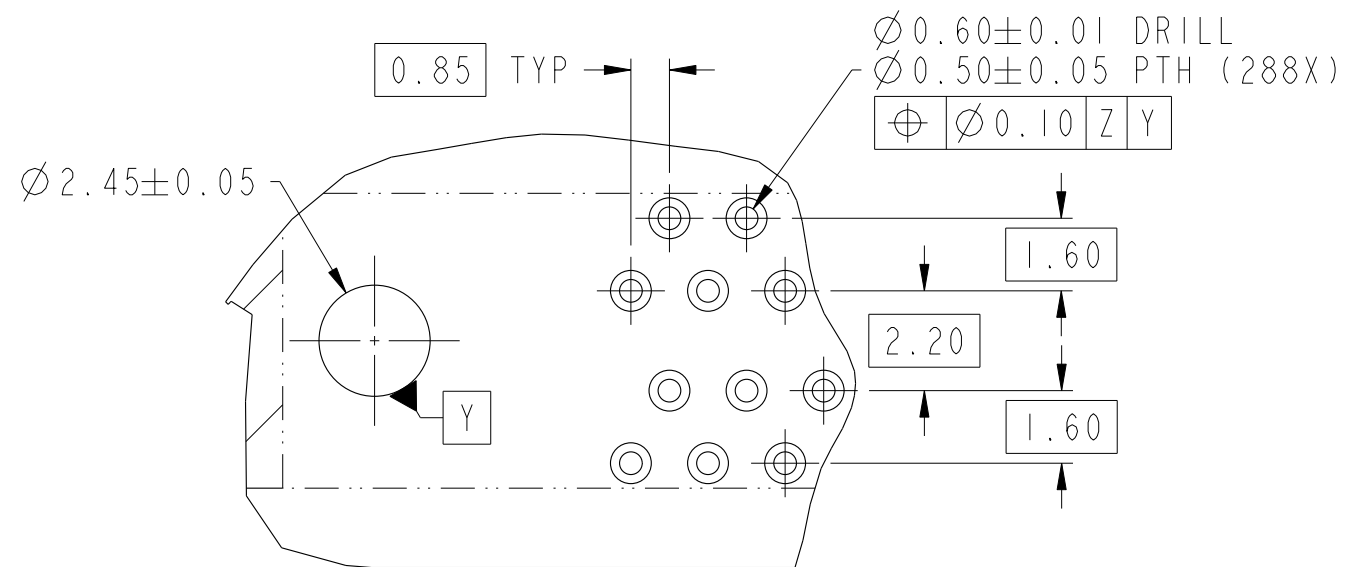


spec ref	dr	Nickor Zuo	2013/06/01	projection	MM	size	A3	scale	3:2
tolerance std	eng	Matthew Cheong	2016/03/22	chr	-	ecn no	ELX-S-23544-1	rel level	Released
	appr	Chen-Hong Tan	2016/04/18	product family	-	rel level	Released		
surface	linear	0.X	±0.30	Amphenol FCI	DDR4 288Pin DIMM CONNECTOR	dwg no	10124806	rev	D
		0.XX	±0.20	www.fci.com	PRESS FIT TERMINATION	cat. no.	-	Product - Customer Drw	sheet 2 of 4
		0.XXX	±0.10						
ISO 1302	angular	0°	±2°						

# RECOMMENDED PCB LAYOUT



PCB THICKNESS  
1.60 Min



DETAIL S  
SCALE 6:1

spec ref	dr	Nickor Zuo	2013/06/01	projection	MM	size	A3	scale	2:1
tolerance std	eng	Matthew Cheong	2016/03/22	chr	-	ecm no	ELX-S-23544-1	rel level	Released
	appr	Chen-Hong Tan	2016/04/18	product family	-	rel level	Released		
surface	linear	0.X	$\pm 0.30$	Amphenol FCI	DDR4 288Pin DIMM CONNECTOR	dwg no	10124806	rev	D
		0.XX	$\pm 0.20$	www.fci.com	PRESS FIT TERMINATION				
		0.XXX	$\pm 0.10$						
ISO 1302	angular	0°	$\pm 2^\circ$						
				cat. no.	-	Product - Customer Drw	sheet 3 of 4		

PRODUCT PART NUMBER

10124806-□□□□□LF

EON LENGTH. DIM "L"

0: L =2.10  
2: L =1.85

HOUSING COLOR & POST LENGTH, DIM "X"

0: NATURAL, DIM "X"= 2.60  
1: BLACK, DIM "X"= 2.60  
2: BLUE, DIM "X"= 2.60  
3: NATURAL, DIM "X"= 4.30  
4: BLACK, DIM "X"= 4.30  
5: BLUE, DIM "X"= 4.30

EJECTOR TYPE

CODE	COLOR	DIM"X1" MAX.EJECTORS OPEN DISTANCE	DIM"X2" MAX.EJECTORS CLOSE DISTANCE	DIM"W" EJECTOR WIDTH	EJECTOR FIGURE
0	NATURAL	162.00	149.00	(6.42)	
1	BLACK				
3	NATURAL	152.00	142.00	(6.42)	
4	BLACK				
5	NATURAL	162.00	149.00	(6.42)	
6	BLACK				

CONTACT AREA PLATING

CONTACTS LUBRICATION

0: WITHOUT  
1: WITH

CODE	CONTACT AREA	UNDERPLATING
1	15u" MIN.GOLD	50u" MIN.NICKEL
3	30u" MIN.GOLD	
4	30u" MIN.GXT	90u" MIN.NICKEL
6	30u" MIN.GOLD	
7	15u" MIN.GOLD	

NOTES:

1. MATERIALS:  
HOUSING: HIGH PERFORMANCE RESINS, GLASS FILBER FILLED, UL94 V-0 RATED.  
EJECTOR: HIGH PERFORMANCE RESINS, GLASS FILBER FILLED, UL94 V-0 RATED.  
TERMINAL: COPPER ALLOY
2. DATE CODE"MMDDYYL",MMDDYY IS ASSEMBLY DATE,  
L IS FCI PRODUCTION SITE.
3. SPECIFICATION:  
PRODUCTION SPECIFICATION: FCI GS-12-1092.  
PACKAGE SPECIFICATION: FCI GS-14-2267.  
APPLICATION SPECIFICATION: FCI GS-20-0353.
4. LEAD FREE PRODUCT MEETS EUROPEAN UNION DIRECTIVES AND OTHER COUNTRY  
REGULATIONS AS DESCRIBED IN FCI GS-22-008.
5. A SYMBOL WILL BE NEXT TO ANY DIMENSION, VIEW, OR NOTE WHICH HAS BEEN  
MODIFIED WITH THE CURRENT DRAWING REVISION.



spec ref				dr		Nickor Zuo	2013/06/01		projection				size		A3		scale		1:1						
tolerance std		TOLERANCES UNLESS OTHERWISE SPECIFIED				eng		Matthew Cheong		2016/03/22				ecn no		ELX-S-23544-1									
chr						-		-																	
appr						Chen-Hong Tan		2016/04/18		product family						-		rel level		Released					
surface 		linear		0.X		±0.30		Amphenol FCI		title		DDR4 288Pin DIMM CONNECTOR		dwg no		10124806		rev		D					
																						0.XX		±0.20	
																						0.XXX		±0.10	
ISO 1302		angular		0°		±2°		www.fci.com		cat. no.		-		Product - Customer Drw		sheet 4 of 4									