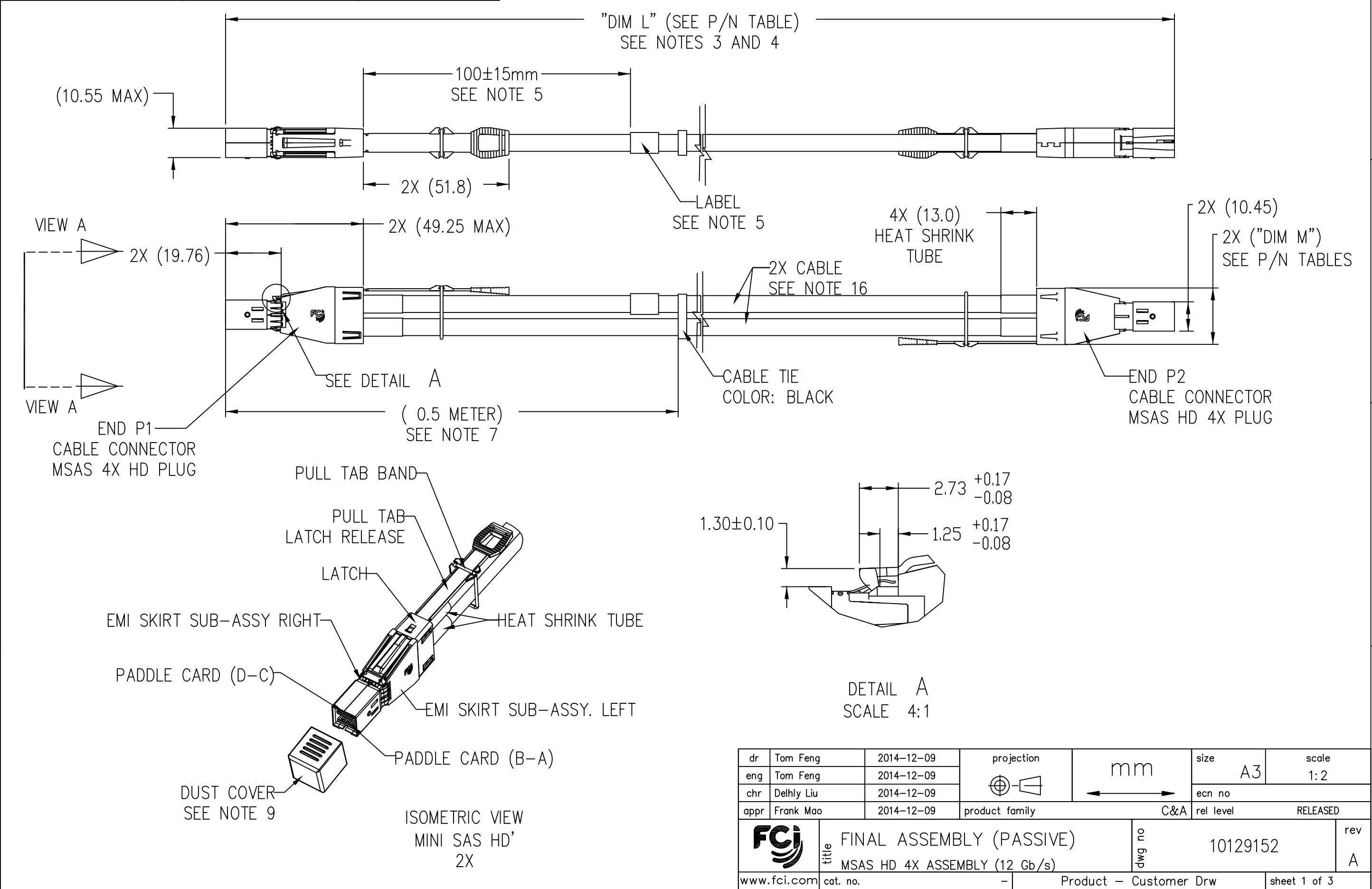
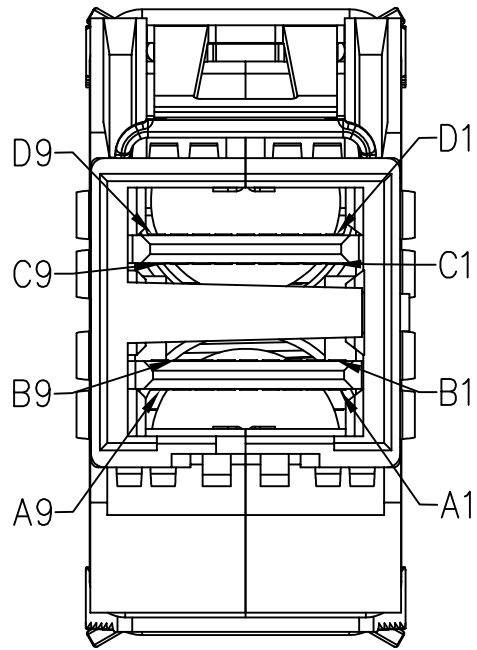


1		2	3	4
PRODUCT NUMBER	DESCRIPTION	NOTES		
10129152-XXXXLF	NON-HF	SEE SHT. 2		
10129152-XXXXHLF	HALOGEN FREE (H)	SEE SHT. 2		

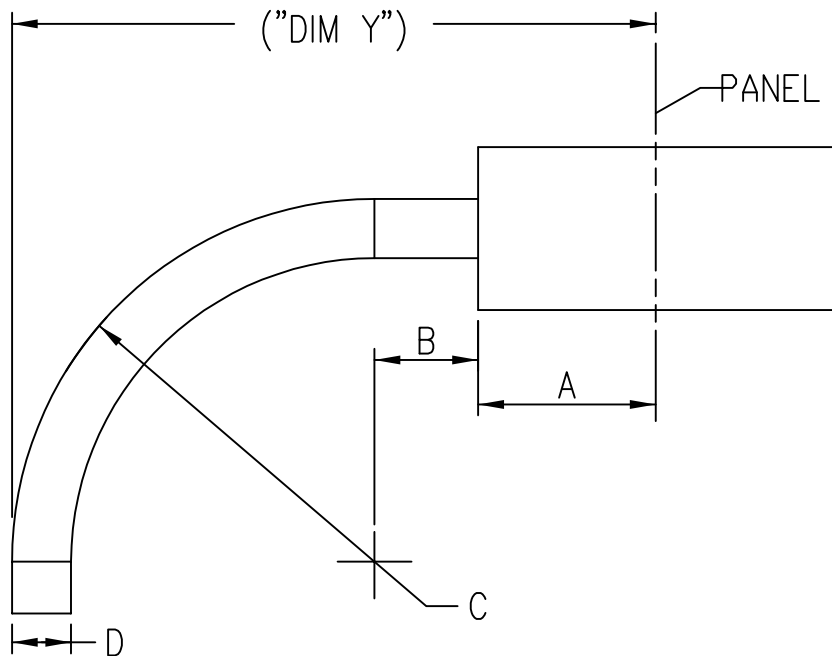


PART NUMBER (NON-HALOGEN FREE) SEE NOTE 12 AND 16	"DIM L" LENGTH (Meters)	"DIM M" (mm)	AWG	ORACLE P/N
10129152-2010LF	1.0	17.3	30	7090470
10129152-3030LF	3.0	17.3	28	7086487
10129152-4060LF	6.0	20.1	26	7086490



P1  
VIEW A  
SCALE 4:1

LEGEND:	
	HIGH-SPEED SERIAL DIFFERENTIAL PAIRS
	SIGNAL RETURN
	POWER AND MANAGEMENT INTERFACE



BEND RADIUS  
TOP VIEW OF CONNECTOR

MINIMUM CABLE BEND TABLE					
CABLE	A	B	C	D (nominal)	("DIM Y") NON-HF
26 AWG	29.5	13.0	42.6	Ø7.1	85.1
28 AWG			36.6	Ø6.1	79.1
30 AWG			31.8	Ø5.3	74.3

WIRING LIST (SEE NOTE 6)				
END P1			END P2	
POSITION	SYMBOL		POSITION	SYMBOL
D9	GROUND	-----	B9	GROUND
D8	Tx2-		B8	Rx2-
D7	Tx2+		B7	Rx2+
D6	GROUND	-----	B6	GROUND
D5	Tx0-		B5	Rx0-
D4	Tx0+		B4	Rx0+
D3	GROUND	-----	B3	GROUND
D2	Vman		B2	ModPrsL
D1	Vact		B1	Vact
C1	SCL		A1	Reserved
C2	SDA		A2	IntL
C3	GROUND	-----	A3	GROUND
C4	Tx1+		A4	Rx1+
C5	Tx1-		A5	Rx1-
C6	GROUND	-----	A6	GROUND
C7	Tx3+		A7	Rx3+
C8	Tx3-		A8	Rx3-
C9	GROUND	-----	A9	GROUND
B9	GROUND	-----	D9	GROUND
B8	Rx2-		D8	Tx2-
B7	Rx2+		D7	Tx2+
B6	GROUND	-----	D6	GROUND
B5	Rx0-		D5	Tx0-
B4	Rx0+		D4	Tx0+
B3	GROUND	-----	D3	GROUND
B2	ModPrsL		D2	Vman
B1	Vact		D1	Vact
A1	Reserved		C1	SCL
A2	IntL		C2	SDA
A3	GROUND	-----	C3	GROUND
A4	Rx1+		C4	Tx1+
A5	Rx1-		C5	Tx1-
A6	GROUND	-----	C6	GROUND
A7	Rx3+		C7	Tx3+
A8	Rx3-		C8	Tx3-
A9	GROUND	-----	C9	GROUND

dr	Tom Feng	2014-12-09	projection	mm	size	A3	scale	1:2
eng	Tom Feng	2014-12-09			ecn no			
chr	Delhly Liu	2014-12-09			rel level	RELEASED		
appr	Frank Mao	2014-12-09	product family	C&A				
FCI		title		FINAL ASSEMBLY (PASSIVE)		dwg no		10129152
www.fci.com		cat. no.		MSAS HD 4X ASSEMBLY (12 Gb/s)		rev		A
				Product - Customer Drw		sheet 2 of 3		

PRODUCT NUMBER	DESCRIPTION	NOTES
10129152-XXXXLF	NON-HF	SEE SHT. 2
10129152-XXXXHLF	HALOGEN FREE (H)	SEE SHT. 2

NOTES:

1. MATERIAL:

BACK SHELLS: ZINC ALLOY/ COPPER UNDERPLATE/ NICKEL OVERPLATE  
PULL TAB: THERMOPLASTIC POLYMER  
LATCH : STAINLESS STEEL  
FERRULE: BRASS  
EMI SKIRT: STAINLESS STEEL  
LOCTITE  
PADDLE CARD: PRINTED CIRCUIT SUBSTRATE  
HEAT SHRINK TUBE: POLYOLEFIN

2. THIS PRODUCT MEETS THE RESTRICTION OF HAZARDOUS SUBSTANCES IN ELECTRICAL AND ELECTRONIC EQUIPMENT (RoHS) DIRECTIVE (2011/65/EU)

3. THIS DIMENSION IS A FINISHED PRODUCT LENGTH.

4. UNLESS OTHERWISE SPECIFIED ASSEMBLED LENGTH TOLERANCE IS TO BE:

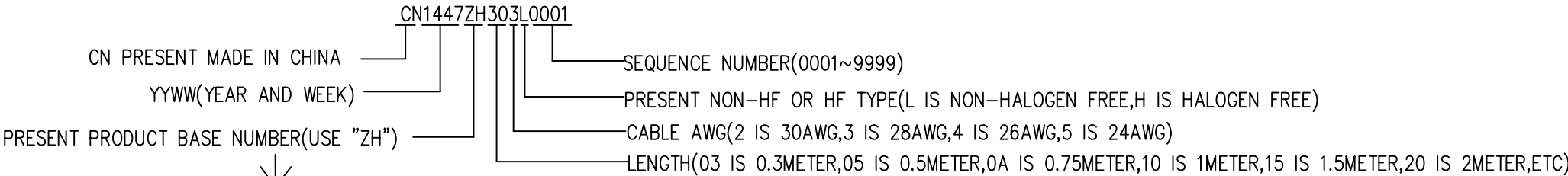
"DIM L" < 1 METERS, TOLERANCE = ±25mm

"DIM L" = 1 METER TO 6 METERS,TOLERANCE = ± 2% OF "DIM L"

5. LABEL DETAILS:

ORACLE PART NUMBER
BAR CODE ORACLE PART NUMBER
SERIAL NUMBER/DATE OF MANUFACTURE
VENDOR NAME/CODE COUNTRY OF ORIGIN

FONT SHALL BE CLEARLY VISIBLE AND BLACK IN COLOR.  
CE MARK VERTICAL DIMENSION MAY NOT BE LESS THAN 5mm.  
SERIAL NUMBER IS ONLY USED FOR TRACKING PRODUCT,DETAIL IS AS BELOW :



CABLE LABEL EXAMPLE:

ORACLE 7086487
CN1447ZH303L0001
FCI CHINA

6. ALL CABLE ASSEMBLIES 100% TESTED FOR CONTINUITY AS DEFINED IN WIRING LIST.

7. PLACE A CABLE TIE EVERY 0.5 METER ON ALL ASSEMBLIES, UNLESS OTHERWISE SPECIFIED. IN CASE OF 0.5 METER CABLE ASSEMBLY, CABLE TIE IS TO BE APPLIED AT THE MIDWAY POINT.

8. OTHER TESTING PERFORMED AS REQUIRED BY PRODUCT SPECIFICATION: GS-12-651.

9. PACKAGING OF LEAD FREE PRODUCTS MEETS LABELING AND PACKAGING PER SPECIFICATION GS-14-920. PACKAGE CABLE ASSEMBLIES PER GS-14-1272. DUST COVERS ARE TO BE ASSEMBLED PRIOR TO PACKAGING. FCI PACKAGE TRACKING BAG LABEL IS ONLY FOR REFERENCE. CE MARK SHOULD BE ADDED ON FCI STANDARD PACKAGE LABEL(G1 LABEL), CE MARK VERTICAL DIM. MAY NOT BE LESS THAN 5mm.

NOTES CONTINUED:

10. A "Δ" SYMBOL WILL BE NEXT TO ANY DIMENSION, VIEW, OR NOTE WHICH HAS BEEN MODIFIED WITH THE CURRENT DRAWING REVISION. THE CURRENT REVISION WILL BE SHOWN IN THE SYMBOL.

11. "H" PRODUCT NUMBERS DESIGNATE THE USE OF HALOGEN FREE RAW CABLE.

12. HALOGEN FREE RAW CABLE CAN BE USED AS A SUBSTITUTE ON NON-HF PRODUCT NUMBERS.

13. CABLE ASSEMBLY CAN MEET SAS 3.0 SPECIFICATION.

14. MATES TO SERIES: 10112626 or 10112627 Or 10112628

15. EEPROM INFORMATION REFER TO FCI LATEST PRODUCT SPEC. GS-12-651.

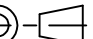


16. CABLE IS OPTIONAL,WHICH HAD BEEN QUALIFIED BY FCI AND MEET FCI PRODUCT SPEC. GS-12-651.

PACKAGE BAG LABEL

ORACLE PART NUMBER
BAR CODE ORACLE PART NUMBER
SERIAL NUMBER/DATE OF MANUFACTURE
BAR CODE SERIAL NUMBER
VENDOR NAME/CODE COUNTRY OF ORIGIN

PACKAGE BAG LABEL EXAMPLE:

ORACLE 7086487
Serial: CN1447ZH303L0001
FCI CHINA

dr	Tom Feng	2014-12-09	<div>projection</div> <div></div>	<div>mm</div> <div></div>	size	A3	scale	1:2			
eng	Tom Feng	2014-12-09			ecn no						
chr	Delhly Liu	2014-12-09			rel level						
appr	Frank Mao	2014-12-09	product family	C&A	RELEASED						
<div></div>		title			FINAL ASSEMBLY (PASSIVE)			dwg no	10129152	rev	A
		MSAS HD 4X ASSEMBLY (12 Gb/s)									
www.fci.com		cat. no.	-	Product - Customer Drw				sheet 3 of 3			